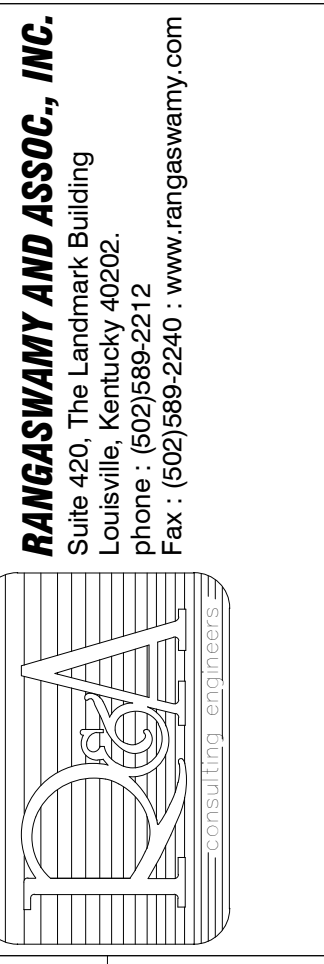
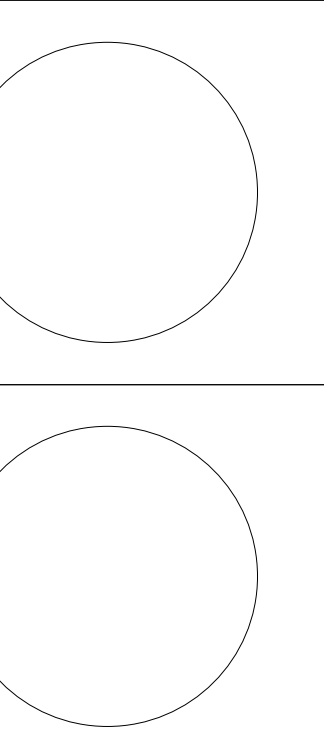


University of Louisville - Student Recreation Center (Phase #3 - Construction Set) Louisville, Ky



212 North Upper Street
Lexington, Kentucky 40507-1001
p 859.252.6864 f 859.253.2358
www.omniarchitects.com

Omni ARCHITECTS

CANNONDESIGN



#	Revision Date
2	Jan 24, 2012

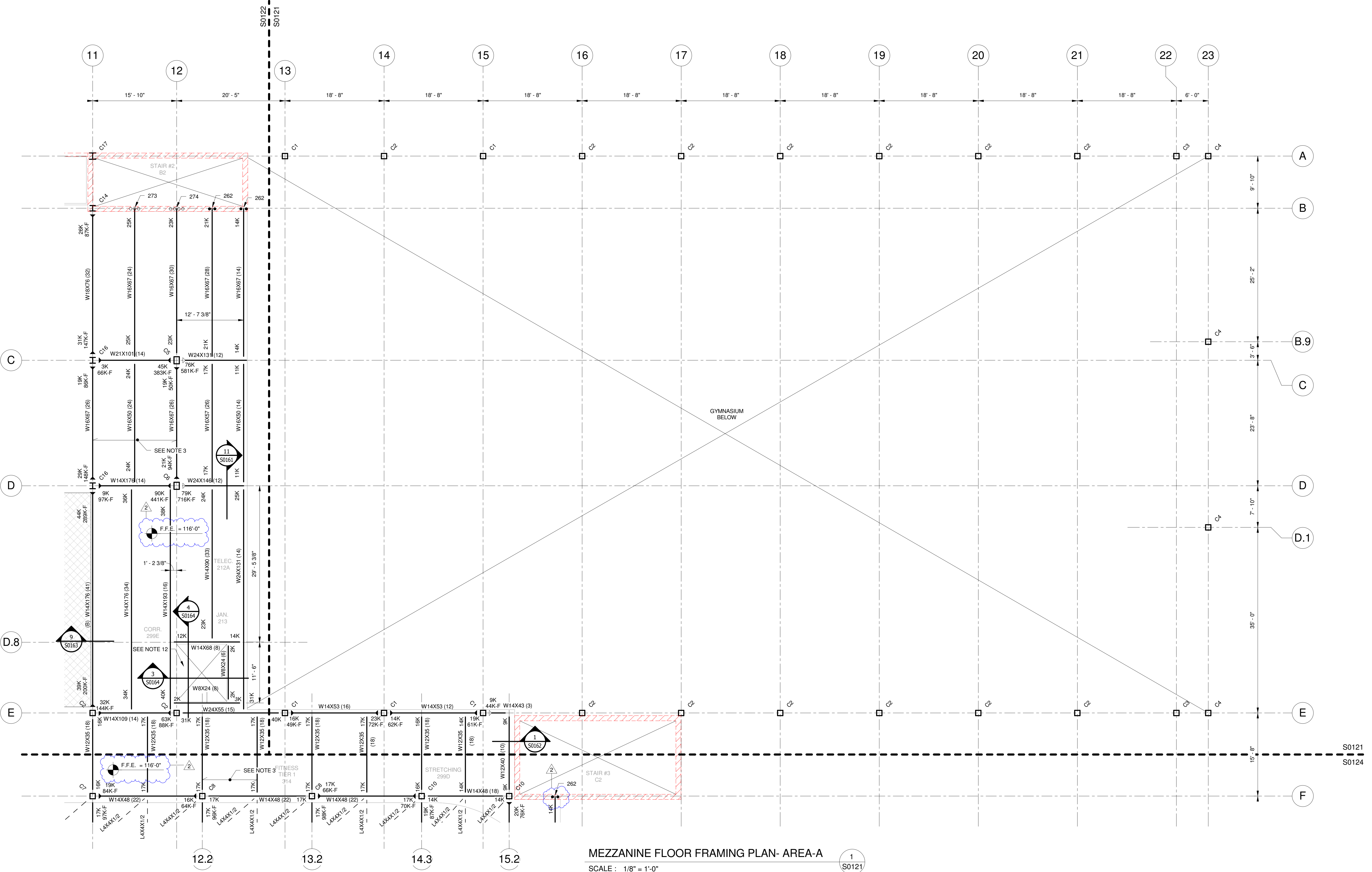
Drawing Name: MEZZANINE FLOOR FRAMING PLAN- AREA-A

U of L Project Number: Omni - 1105.00 Cannon - 08667.00

Project Number: March 02, 2012

Date: VPP Checked By: ANTHONY

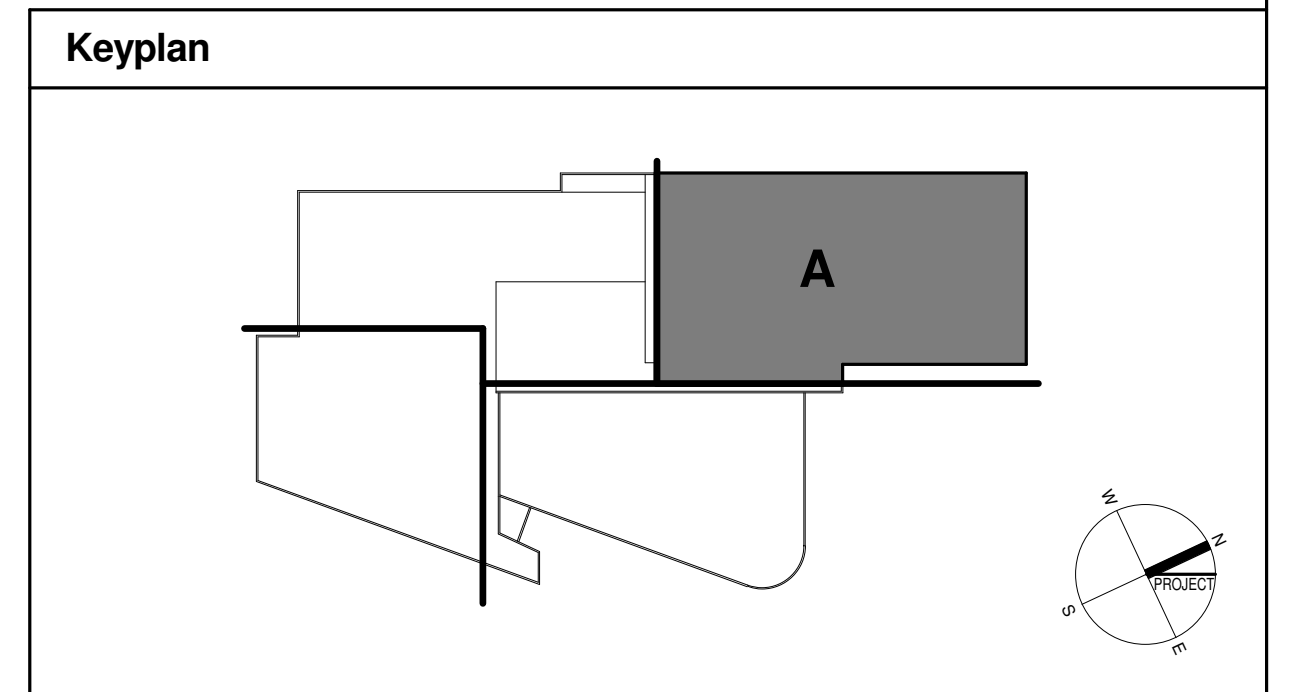
S0121



- MEZZANINE FLOOR FRAMING NOTES:**
- ESTABLISHED ELEVATIONS:
F.F.E. 116'-0" UNO
TOP OF BEAM EL. 115'-5 3/4" UNO
ELEVATIONS ARE TO BE AS INDICATED ABOVE, UNLESS OTHERWISE NOTED +/- INCHES ABOVE/BELOW.
 - MAXIMUM SPACING BETWEEN FLOOR BEAMS, AND BETWEEN ALL OTHER FLOOR BEARING MEMBERS, SHALL NOT EXCEED 11'-0" O.C.
 - TYPICAL FLOOR SLAB (6 1/4" TOTAL DEPTH) 3 1/4" LIGHT WEIGHT CONCRETE w/FIBERMESH ON 3 V.L. 18 GAGE GALVANIZED METAL DECK BY VULCRAFT OR APPROVED EQUIVALENT (TYP. U.N.O.)
 - FLOOR SLAB (6 1/4" TOTAL DEPTH) 3 1/4" MIN. LIGHT WEIGHT CONCRETE w/FIBERMESH ON 3 V.L. 18 GAGE GALVANIZED METAL DECK BY VULCRAFT OR APPROVED EQUIVALENT (TYP. U.N.O.) AND 4 3/4" TOPPING SLAB w/FIBERMESH CONCRETE ABOVE INSULATION. SEE DETAIL (S0163).
 - FLOOR SLAB (6 1/4" TOTAL DEPTH) 3 1/4" MIN. LIGHT WEIGHT CONCRETE w/FIBERMESH ON 3 V.L. 18 GAGE GALVANIZED METAL DECK BY VULCRAFT OR APPROVED EQUIVALENT (TYP. U.N.O.) AND 4 3/4" TOPPING SLAB w/FIBERMESH CONCRETE ABOVE INSULATION. SEE DETAIL (S0163).
 - REFER TO ARCHITECTURAL, MECHANICAL, PLUMBING AND ELECTRICAL DRAWINGS FOR HOUSEKEEPING AND/OR EQUIPMENT PADS, CURB SIZES AND LOCATIONS. SIZES AND LOCATIONS OF PAD SHALL BE VERIFIED WITH APPROVED MANUFACTURER'S EQUIPMENT SHOP. DRAWING PRIOR TO CONSTRUCTION.
 - ALL FLOOR DRAINS MAY NOT BE SHOWN. COORDINATE EXACT LOCATIONS AND QUANTITIES WITH THE PLUMBING DRAWING. PROVIDE POSITIVE SLOPES (WARPS) IN T.O. FLOOR SLAB IN ORDER TO PROVIDE REQUIRED DRAINAGE. COORDINATE FLOOR FINISHES WITH THE ARCHITECT.
 - ALL BEAMS HAVE 1 ROW OF STUDS (UNO).
NUMBER OF STUDS PER BEAM DENOTED THUS ()
 - COLUMN CALLOUT DENOTED THUS:
Cxx - COLUMN DESIGNATION
[SEE COLUMN SCHEDULE]
 - PROVIDE #4@12" o.c. TOP TRANSVERSE, OVER ALL BEAMS W/#@12" o.c. LONGIT. (TYP.) SEE TYPICAL COMPOSITE SLAB REINF. DETAIL (1/S0202).
 - REFER TO ARCHITECTURAL DRAWINGS AND MEP DRAWINGS FOR SLAB OPENINGS AND PENETRATIONS.
 - REFER TO ARCHITECTURAL DRAWINGS FOR STAIR DIMENSION AND CONSTRUCTION, SLAB DEPRESSIONS AND ELEVATOR OPENINGS.
 - SEE STRUCTURAL LINTEL ELEVATION SHEETS FOR LINTEL BEAMS AND METAL PANEL FRAMING DETAILS.
 - PROVIDE 1/4" THICK BENT PLATE OR 1/4" THICK ANGLE FOR ALL DECK EDGE FRAMING. IF THE CANT. LENGTH IS LESS THAN OR EQUAL TO 1'-0". FOR COMPOSITE DECK EDGE DETAIL SEE 2/S0202.
 - PROVIDE ADDL. REINF. (2) #5 BENEATH NON-LOAD BEARING CMU WALLS FOUNDED ON FLOOR SLAB.
 - COORDINATE WITH ARCH. FOR SLAB EDGE / BOUNDARY DETAILS.

- LEGENDS:**
- [Symbol] = 12" REINFORCED CMU w/(2) #6 IN EACH CORE
 - [Symbol] = 12" REINFORCED CMU w/(2) #7 IN EACH CORE
 - [Symbol] = LOAD BEARING CMU WALL AND/OR EXTERIOR CMU WALL ABOVE
 - [Symbol] = 252' ADDITIONAL VERTICAL CMU REINF. REQUIRED (SEE TYPICAL DETAIL)
 - [Symbol] = LOAD BEARING CMU WALL AND/OR EXTERIOR CMU WALL BELOW
 - [Symbol] = STANDARD S.J.I. BRIDGING
 - [Symbol] = INDICATES MOMENT CONNECTION BY OTHERS
 - [Symbol] = INDICATES CANTILEVER MOMENT CONNECTION BY OTHERS.
 - [Symbol] = REFER TYPICAL DETAIL 14/S0200 FOR BEAM AND COLUMN CONNECTION. (U.N.O.)
 - (A) = INDICATES TOP OF STEEL ELEVATION 114'-10"
 - (B) = INDICATES TOP OF STEEL ELEVATION 115'-3 7/8"
 - (C) = INDICATES TOP OF STEEL ELEVATION 137'-1 1/2"
 - (D) = INDICATES TOP OF STEEL ELEVATION 115'-1 3/4"
 - (E) = INDICATES TOP OF STEEL ELEVATION 113'-4 3/8"
 - (F) = INDICATES WTTX96.5 ABOVE BEAM, T.O.S. EL. 115'-5 3/4"
 - (H1) = INDICATES HSS3X3X1/4 ABOVE ROOF BEAM, T.O.S. EL. VARIES, SEE PLAN
 - (H2) = INDICATES HSS3X2 1/2X3/16 ABOVE FLOOR BEAM, T.O.S. EL. 137'-1 1/2"
 - (H3) = INDICATES HSS8X8X1/2 ABOVE ROOF BEAM, T.O.S. EL. VARIES, SEE PLAN
 - (H4) = INDICATES HSS10X10X1/2 ABOVE ROOF BEAM, T.O.S. EL. VARIES, SEE PLAN
 - [Symbol] = AEROBICS STORAGE FLOOR SLAB - 7 3/4" DEPRESSION
 - [Symbol] = AEROBICS FLOOR SLAB - 7 3/4" DEPRESSION
 - [Symbol] = RACQUET BALL FLOOR SLAB - 1 7/8" DEPRESSION
 - [Symbol] = GYM FLOOR SLAB - 2 1/2" DEPRESSION

DISCLAIMER NOTE:
THIS SET OF CONSTRUCTION DRAWINGS HAS BEEN UPDATED TO INCLUDE ANY CHANGES ISSUED THROUGH ADDENDUM OR OTHER MEANS. EVERY EFFORT HAS BEEN TAKEN TO INCLUDE ALL CHANGES TO DATE. THE CONTRACTOR IS STILL RESPONSIBLE FOR PROVIDING ANY ITEMS THAT WERE SHOWN AS PART OF THE ORIGINAL BID SET THAT MAY HAVE BEEN OVERLOOKED AND NOT INCLUDED IN THIS SET.



© Cannon Design 2010
All rights reserved. No part of this document may be reproduced or transmitted in any form or by any means, electronic or mechanical, including photocopying, recording, or by any information storage and retrieval system, without prior written authorization by The Cannon Corporation.
02-03-2012 16:12:39