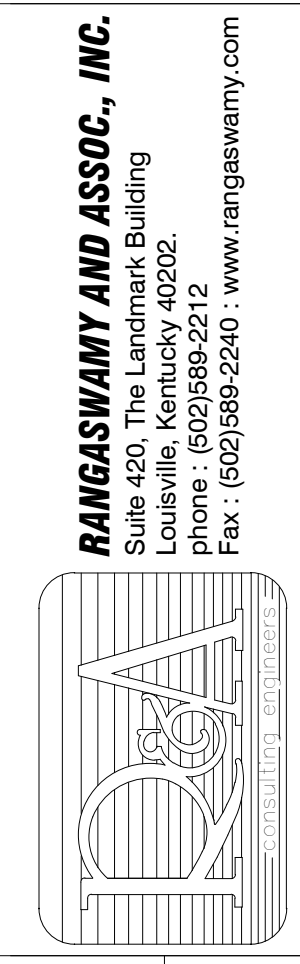
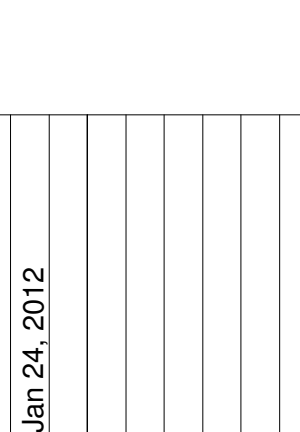


University of Louisville - Student Recreation Center (Phase #3 - Construction Set) Louisville, Ky



212 North Upper Street
Lexington, Kentucky 40507-1001
p 859.252.6664 f 859.253.2358
www.omniarchitects.com



| # | Revision Date |
|---|---------------|
| 2 | Jan 24, 2012 |

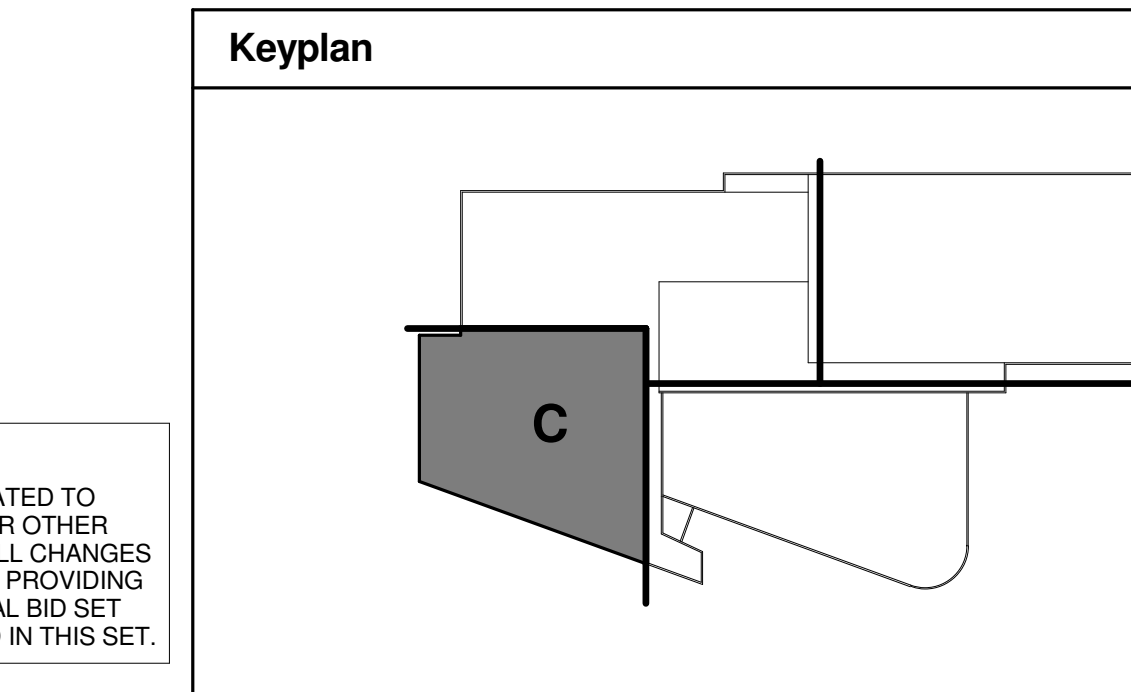
Drawing Name: MEZZANINE FLOOR FRAMING PLAN- AREA-C
U of L Project Number: Omni - 1105.00 Cannon - 08667.00
Project Number: March 02, 2012
Date: VPP Checked By: ANTHONY

S0123

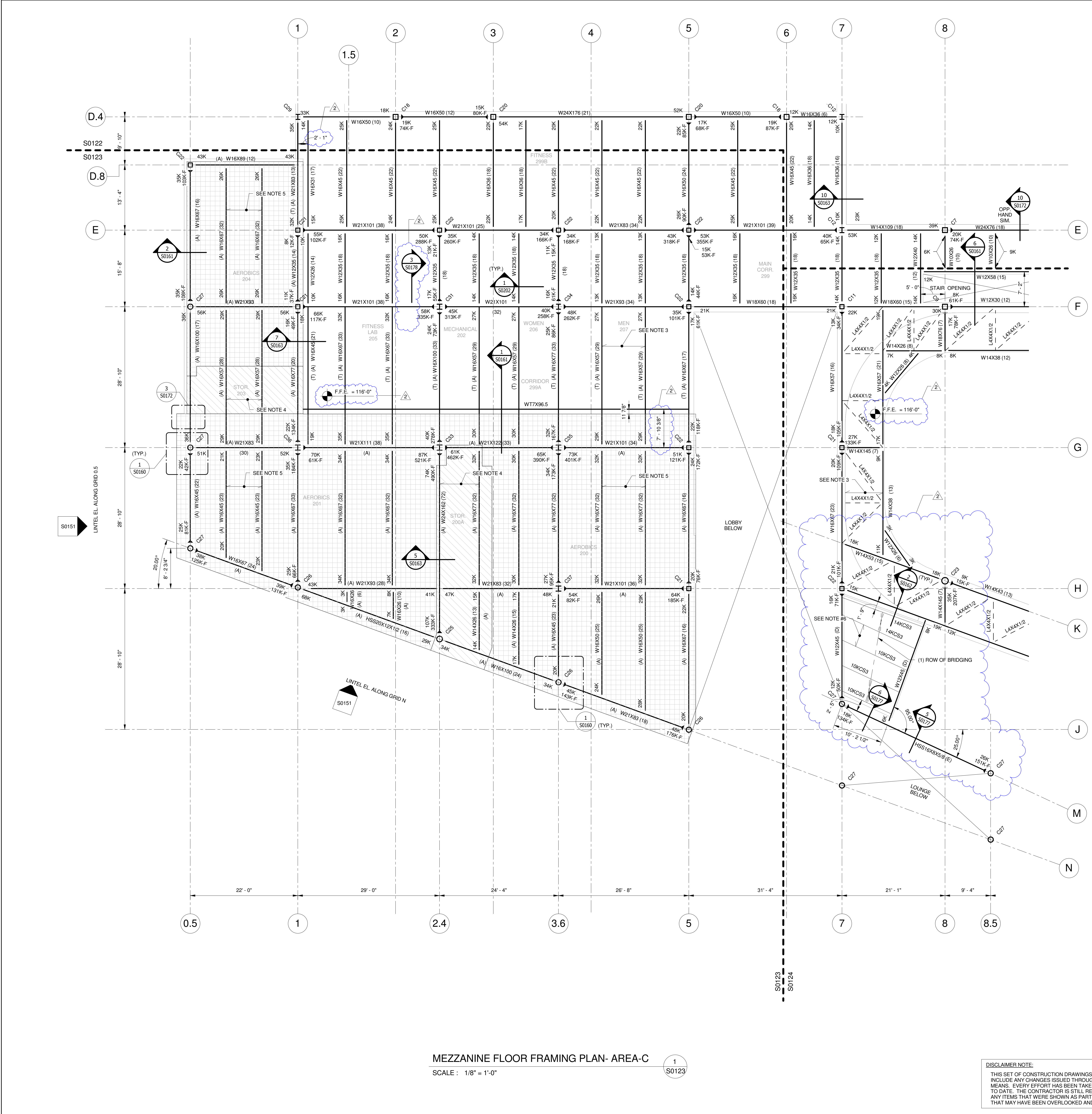
- MEZZANINE FLOOR FRAMING NOTES:**
- ESTABLISHED ELEVATIONS:
F.F.E. 116'-0" UNO
TOP OF BEAM EL. 115'-5 3/4" UNO
ELEVATIONS ARE TO BE AS INDICATED ABOVE, UNLESS OTHERWISE NOTED +/- INCHES ABOVE/BELOW.
 - MAXIMUM SPACING BETWEEN FLOOR BEAMS, AND BETWEEN ALL OTHER FLOOR BEARING MEMBERS, SHALL NOT EXCEED 11'-0" O.C.
 - TYPICAL FLOOR SLAB IS 1 1/4" TOTAL DEPTH 3 1/4" MIN. LIGHT WEIGHT CONCRETE W/FIBERMESH ON 3 VLL. 18 GAGE GALVANIZED METAL DECK BY VULCRAFT OR APPROVED EQUIVALENT (TYP. U.N.O.)
 - FLOOR SLAB IS 1 1/4" TOTAL DEPTH 3 1/4" MIN. LIGHT WEIGHT CONCRETE W/FIBERMESH ON 3 VLL. 18 GAGE GALVANIZED METAL DECK BY VULCRAFT OR APPROVED EQUIVALENT (TYP. U.N.O.) AND 4" TOPPING SLAB W/FIBERMESH CONCRETE ABOVE INSULATION. SEE DETAIL (5/S0163).
 - FLOOR SLAB IS 1 1/4" TOTAL DEPTH 3 1/4" MIN. LIGHT WEIGHT CONCRETE W/FIBERMESH ON 3 VLL. 18 GAGE GALVANIZED METAL DECK BY VULCRAFT OR APPROVED EQUIVALENT (TYP. U.N.O.) AND 4" TOPPING SLAB W/FIBERMESH CONCRETE ABOVE INSULATION. SEE DETAIL (5/S0163).
 - REFER TO ARCHITECTURAL, MECHANICAL, PLUMBING AND ELECTRICAL DRAWINGS FOR HOUSEKEEPING AND/OR EQUIPMENT PADS, CURB SIZES AND LOCATIONS. SIZES AND LOCATIONS OF PAD SHALL BE VERIFIED WITH APPROVED MANUFACTURER'S EQUIPMENT SHOP DRAWING PRIOR TO CONSTRUCTION.
 - ALL FLOOR DRAINS MAY NOT BE SHOWN. COORDINATE EXACT LOCATIONS AND QUANTITIES WITH THE PLUMBING DRAWING. PROVIDE POSITIVE SLOPES (WARPS) IN T.O. FLOOR SLAB IN ORDER TO PROVIDE REQUIRED DRAINAGE. COORDINATE FLOOR FINISHES WITH THE ARCHITECT.
 - ALL BEAMS HAVE 1 ROW OF STUDS (UNO).
NUMBER OF STUDS PER BEAM DENOTED THUS ()
 - COLUMN CALLOUT DENOTED THUS:
Cxx - COLUMN DESIGNATION
(SEE COLUMN SCHEDULE)
 - PROVIDE #4@12" o.c. TOP TRANSVERSE, OVER ALL BEAMS W/4@12" o.c. LONGIT. (TYP.) SEE TYPICAL COMPOSITE SLAB REINF. DETAIL (1/S0202).
 - REFER TO ARCHITECTURAL DRAWINGS AND MEP DRAWINGS FOR SLAB OPENINGS AND PENETRATIONS.
 - REFER TO ARCHITECTURAL DRAWINGS FOR STAIR DIMENSION AND CONSTRUCTION, SLAB DEPRESSIONS AND ELEVATOR OPENINGS.
 - SEE STRUCTURAL LTEL ELEVATION SHEETS FOR LINTEL BEAMS AND METAL PANEL FRAMING DETAILS.
 - PROVIDE 1/4" THICK BENT PLATE OR 1/4" THICK ANGLE FOR ALL DECK EDGE FRAMING. IF THE CANT LENGTH IS LESS THAN OR EQUAL TO 1'-0", FOR COMPOSITE DECK EDGE DETAIL SEE 2/S0202.
 - PROVIDE ADDL REINF. (#2) #5 BENEATH NON-LOAD BEARING CMU WALLS
 - PROVIDE SLIP CONNECTION PER DETAIL 2/S0200 FOR BEAMS BEARING ON MASONRY.
 - COORDINATE WITH ARCH. FOR SLAB EDGE / BOUNDARY DETAILS.

- ROOF FRAMING NOTES:**
- INDICATES JOIST BOTTOM CHORD EXTENSION. MAKE FINAL ATTACHMENT TO COLUMN ONLY WHEN ALL ROOF DEAD LOADS ARE IN PLACE. JOISTS LOCATED ON COLUMN LINES SHALL ALWAYS BE "KCS" SERIES JOISTS AND THE JOIST END MOMENT SHALL BE 75% OF THE JOIST MOMENT CAPACITY.
 - MAXIMUM SPACING BETWEEN STEEL BAR JOISTS SHALL NOT EXCEED 5'-0" O.C. U.N.O.
 - UNLESS NOTED OTHERWISE, ALL ROOF JOIST SEATS SHALL BE 4" DEEP.
 - TERMINATE ALL S.J.I. BRIDGING LINES AS SHOWN ON DETAILS 5/S0200 (SIMILAR), 12/S0200 & 10/S0201.
 - ALL JOISTS SHALL BEAR ON STEEL BEAMS OR STEEL PLATES THAT ARE SOLIDLY GROUTED INTO CMU. DO NOT BEAR JOISTS ON HOLLOW CMU BLOCKS, WOOD, ETC. UNLESS APPROVED BY THE ARCHITECT. WELD OR BOLT JOISTS TO BEARING STEEL PER THE JOIST SUPPLIER'S SHOP DRAWING DETAILS.
 - TYPICAL ROOF DECK TYPE B. 1 1/2" DEEP 20 GAGE G-90 DECKING BY VULCRAFT OR APPROVED EQUIVALENT. (TYP. U.N.O.)
 - FIELD MODIFICATIONS TO BAR JOISTS SHALL ONLY BE PERFORMED WITH THE PERMISSION OF THE JOIST SUPPLIER.
 - ALL OPENINGS THROUGH THE ROOF THAT EXCEED 6" DIAMETER OR 30 SQUARE INCHES SHALL HAVE THE DECK SUPPORTED USING STEEL MEMBERS, JOIST HEADERS, ETC. - SEE DETAIL 7/S0201.
 - WELD OR SCREW METAL DECK TO SUPPORTS PER THE DECKING SUPPLIER'S SHOP DRAWING DETAILS. DECKING SUPPLIER MUST GRANT PERMISSION FOR ANY CHANGES TO THE ATTACHMENT METHODS.
 - ALL WATER PIPES OVER 3" IN DIAMETER SHALL BE HUNG FROM JOIST PANEL POINTS OR JOIST CHORDS SHALL BE REINFORCED PER TYPICAL DETAIL 4/S0200.
 - MECHANICAL EQUIPMENT HANGING UNDER THE ROOF JOISTS SHALL BE SUPPORTED BY AT LEAST THREE JOISTS. SEE TYPICAL DETAILS FOR JOIST REINFORCEMENT REQUIREMENTS. STRUCTURAL IS NOT RESPONSIBLE FOR THE DESIGN OF THE ACTUAL MEMBERS USED TO DISTRIBUTE, SUPPORT AND ISOLATE THE ACTUAL EQUIPMENT AND ITS LOADS.
 - MECHANICAL EQUIPMENT SITTING ON THE ROOF SHALL BE LOCATED SO THAT RELATIVE ROOF OPENINGS FOR THE EQUIPMENT DO NOT INTERFERE WITH JOISTS OR BRIDGING LINES. SEE DETAIL 7/S0201 FOR DECK SUPPORT AT ROOF OPENINGS.
 - RD INDICATES ROOF DRAIN. ALL ROOF DRAINS MAY NOT BE SHOWN. COORDINATE EXACT LOCATIONS AND QUANTITIES WITH THE PLUMBING DRAWINGS. PROVIDE POSITIVE SLOPES/WARPS TO THE ROOF IN ORDER TO PROVIDE REQUIRED DRAINAGE. COORDINATE ROOF FINISHES WITH THE ARCHITECT.

- LEGENDS:**
- 12" REINFORCED CMU w/2 #6 IN EACH CORE
 - 12" REINFORCED CMU w/2 #7 IN EACH CORE
 - LOAD BEARING CMU WALL AND/OR EXTERIOR CMU WALL ABOVE
 - ADDITIONAL VERTICAL CMU REINF. REQUIRED (SEE TYPICAL DETAIL)
 - LOAD BEARING CMU WALL AND/OR EXTERIOR CMU WALL BELOW
 - STANDARD S.J.I. BRIDGING
 - INDICATES MOMENT CONNECTION BY OTHERS
 - INDICATES CANTILEVER MOMENT CONNECTION BY OTHERS
 - REFER TYPICAL DETAIL 14/S0200 FOR BEAM AND COLUMN CONNECTION. (U.N.O.)
 - (A) = INDICATES TOP OF STEEL ELEVATION 114'-10"
 - (B) = INDICATES TOP OF STEEL ELEVATION 115'-3 7/8"
 - (C) = INDICATES TOP OF STEEL ELEVATION 117'-1 1/2"
 - (D) = INDICATES TOP OF STEEL ELEVATION 115'-1 3/4"
 - (E) = INDICATES TOP OF STEEL ELEVATION 113'-4 3/8"
 - (T) = INDICATES W17X96.5 ABOVE BEAM, T.O.S. EL. 115'-5 3/4"
 - (H1) = INDICATES HSS3X3X1/4 ABOVE ROOF BEAM, T.O.S. EL. VARIES, SEE PLAN
 - (H2) = INDICATES HSS5X2 1/2X3/16 ABOVE FLOOR BEAM, T.O.S. EL. 137'-1 1/2"
 - (H3) = INDICATES HSS8X8X1/2 ABOVE ROOF BEAM, T.O.S. EL. VARIES, SEE PLAN
 - (H4) = INDICATES HSS10X10X1/2 ABOVE ROOF BEAM, T.O.S. EL. VARIES, SEE PLAN
 - AEROBICS STORAGE FLOOR SLAB - 7 3/4" DEPRESSION
 - AEROBICS FLOOR SLAB - 7 3/4" DEPRESSION
 - RACQUET BALL FLOOR SLAB - 1 7/8" DEPRESSION
 - GYM FLOOR SLAB - 2 1/2" DEPRESSION
 - CLOUNDED ITEMS WHERE CHANGED PER ADDENDUM
 - ADDENDUM NUMBER



DISCLAIMER NOTE:
THIS SET OF CONSTRUCTION DRAWINGS HAS BEEN UPDATED TO INCLUDE ANY CHANGES ISSUED THROUGH ADDENDUM OR OTHER MEANS. EVERY EFFORT HAS BEEN TAKEN TO INCLUDE ALL CHANGES TO DATE. THE CONTRACTOR IS STILL RESPONSIBLE FOR PROVIDING ANY ITEMS THAT WERE SHOWN AS PART OF THE ORIGINAL BID SET THAT MAY HAVE BEEN OVERLOOKED AND NOT INCLUDED IN THIS SET.



MEZZANINE FLOOR FRAMING PLAN- AREA-C
SCALE: 1/8" = 1'-0"
S0123

© Cannon Design 2010. All rights reserved. This document may be reproduced or utilized in any form, without prior written authorization by The Cannon Corporation. 02-03-2012 16:13:09