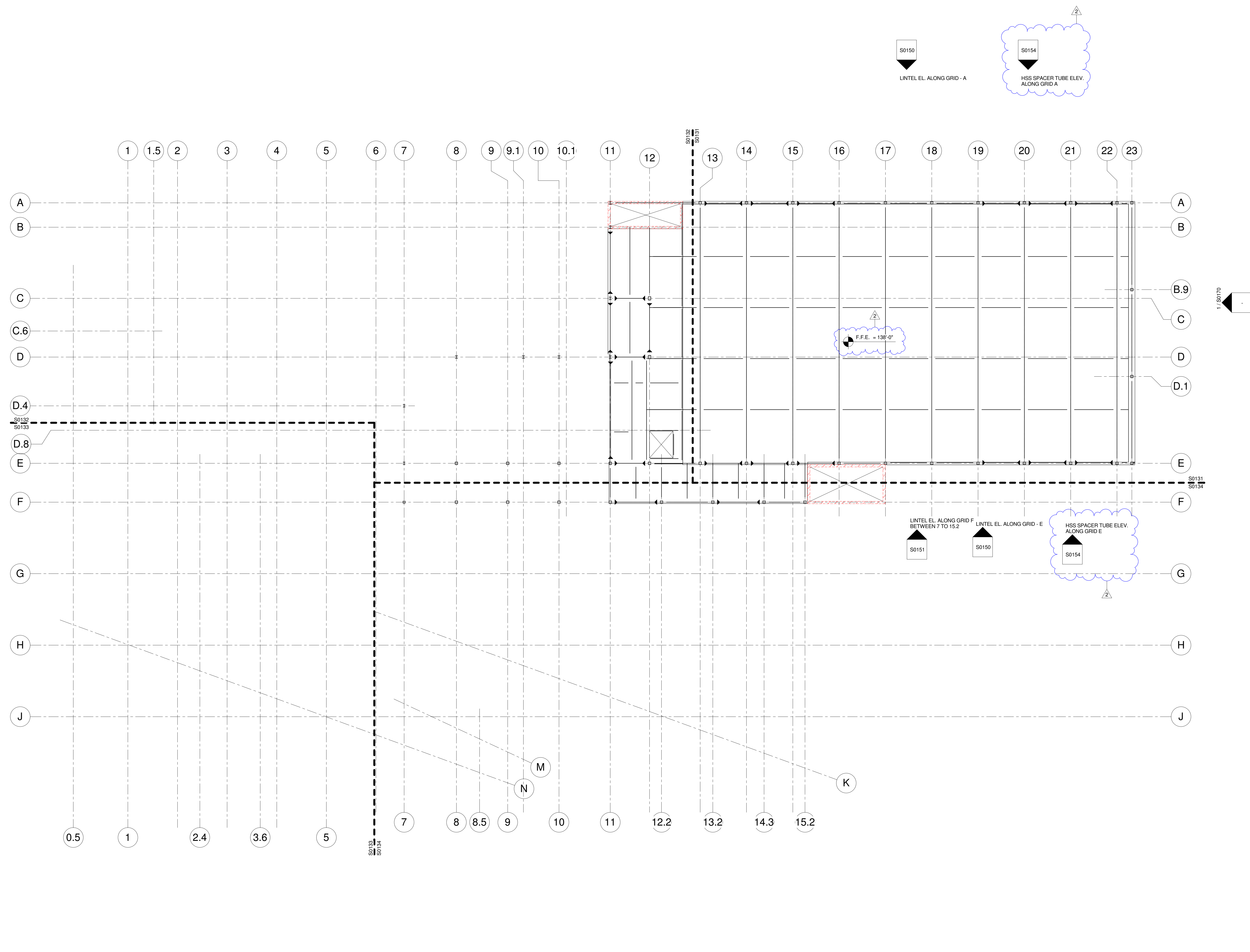


© Cannon Design 2010. All rights reserved. This document may be reproduced or utilized in any form, without prior written authorization by The Cannon Corporation.
02-02-2012 16:13:44



OVERALL LEVEL 02 FLOOR FRAMING PLAN
SCALE: 1/16" = 1'-0"

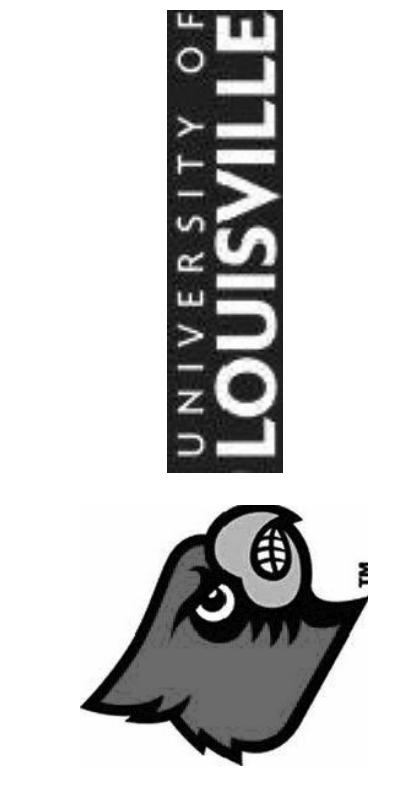
LEGEND:
 = CLOUDED ITEMS WHERE CHANGED PER ADDENDUM
 = ADDENDUM NUMBER

DISCLAIMER NOTE:
 THIS SET OF CONSTRUCTION DRAWINGS HAS BEEN UPDATED TO INCLUDE ANY CHANGES ISSUED THROUGH ADDENDUM OR OTHER MEANS. EVERY EFFORT HAS BEEN TAKEN TO INCLUDE ALL CHANGES TO DATE. THE CONTRACTOR IS STILL RESPONSIBLE FOR PROVIDING ANY ITEMS THAT WERE SHOWN AS PART OF THE ORIGINAL BID SET THAT MAY HAVE BEEN OVERLOOKED AND NOT INCLUDED IN THIS SET.

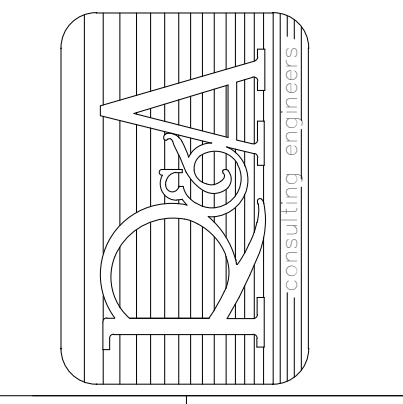
University of Louisville - Student Recreation Center (Phase #3 - Construction Set) Louisville, Ky

Drawing Name:	Revision #	Revision Date
OVERALL LEVEL 02 FLOOR FRAMING PLAN	2	Jan 24, 2012

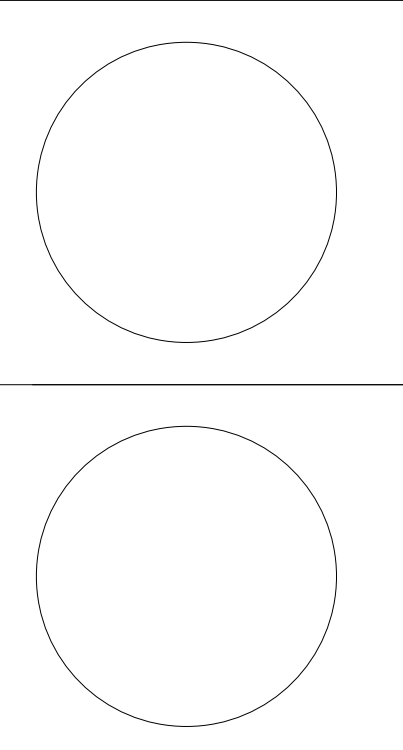
U of L Project Number: Omni - 1105.00
 Project Number: Cannon - 08667.00
 Date: March 02, 2012
 Drawn By: VPP
 Checked By: ANTHONY



Omni ARCHITECTS
 212 North Upper Street
 Lexington, Kentucky 40507-1001
 p 859.252.6664 f 859.253.2388
 www.omniarchitects.com



RANGASWAMY AND ASSOC., INC.
 Suite 420, The Landmark Building
 Louisville, Kentucky 40202
 Fax: (502) 598-2240; www.rangaswamy.com



S0130