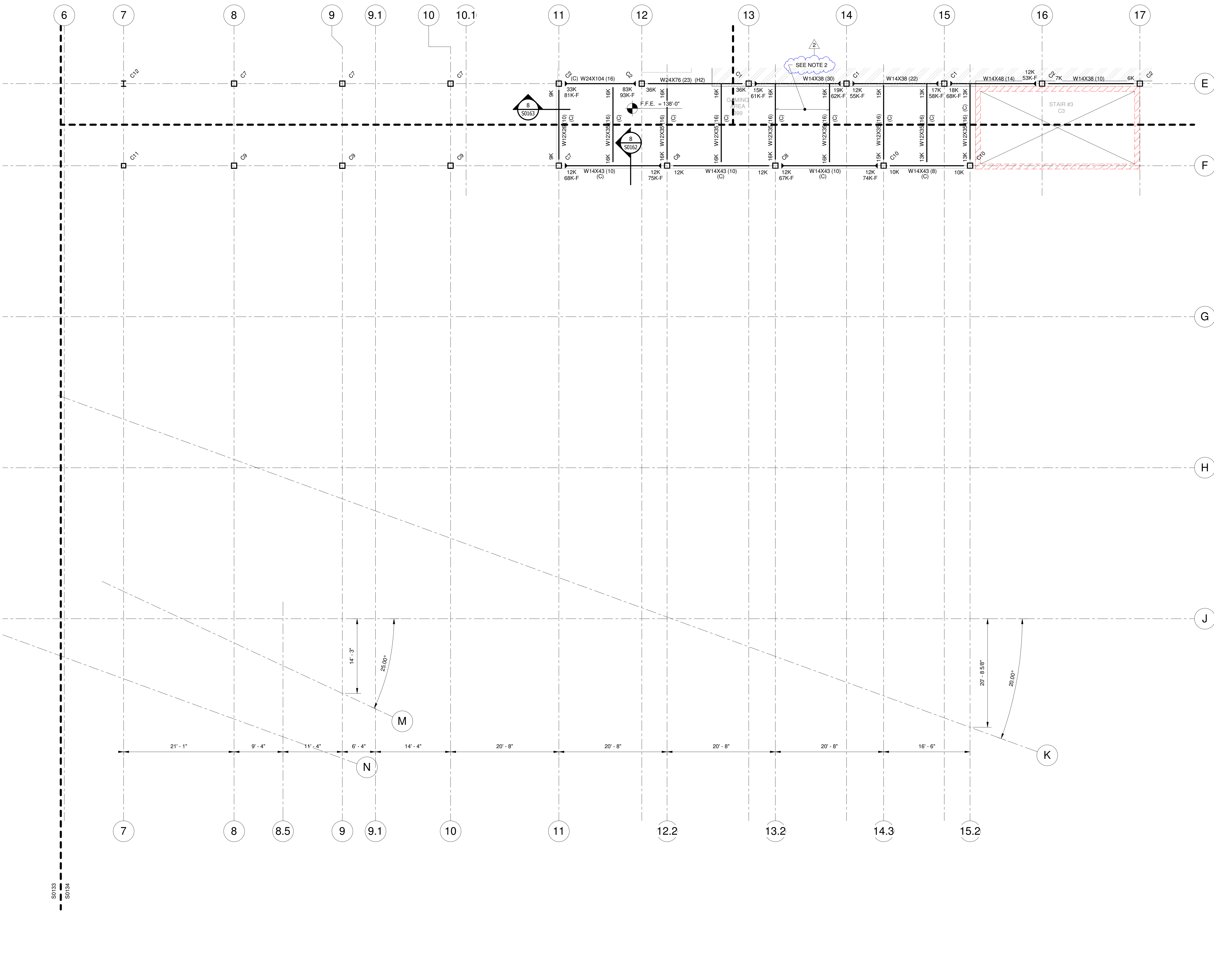


© Cannon Design 2010
 All rights reserved. No part of this document may be reproduced or utilized in any form, without prior written authorization by The Cannon Corporation.
 02-03-2012 16:14:55

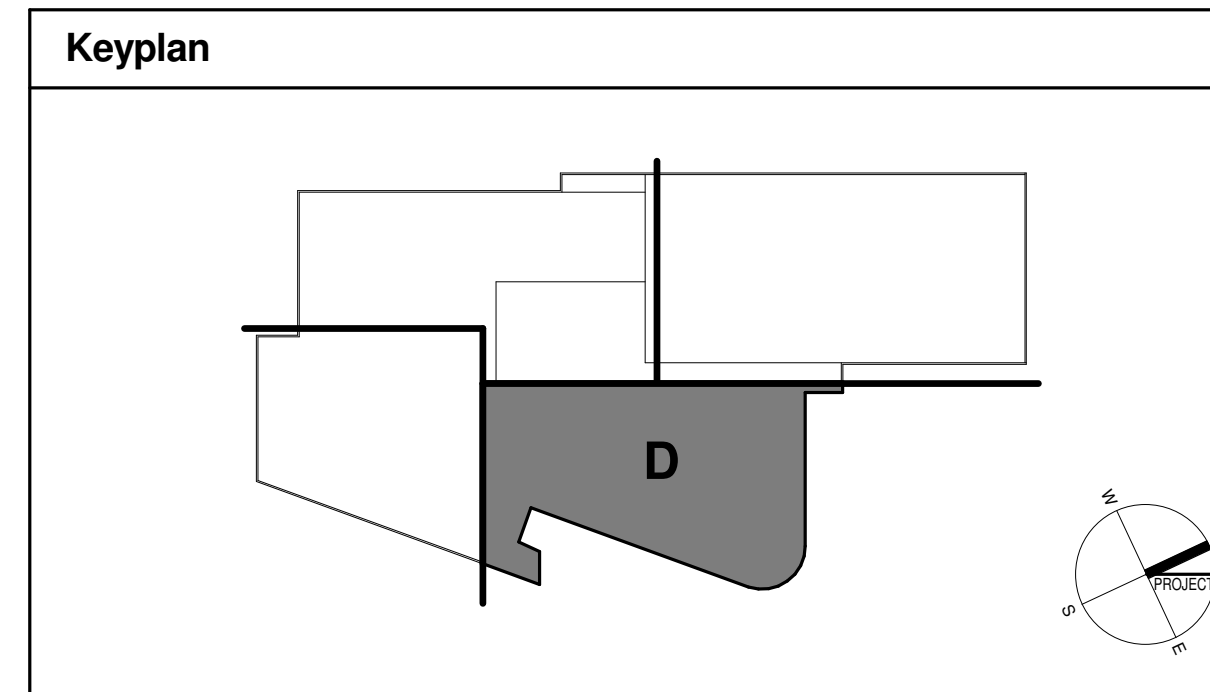


LEVEL 02 FLOOR FRAMING PLAN - AREA-D
 SCALE: 1/8" = 1'-0"

- LEVEL 02 FLOOR FRAMING NOTES:**
- ESTABLISHED ELEVATIONS:
 F.F.E. TOP OF BEAM EL. 138'-0" UNO
 136'-11" UNO
 ELEVATIONS ARE TO BE AS INDICATED ABOVE, UNLESS OTHERWISE NOTED IN INCHES ABOVE/BELOW.
 - FLOOR SLAB (10 1/2" TOTAL DEPTH) 3" MIN. LIGHT WEIGHT CONCRETE W/FIBERMESH ON EDCP750A, 16/18 GAGE GALVANIZED EPIC WIDEK BY EPIC METAL CORPORATION.
 - FLOOR SLAB (13" TOTAL DEPTH) 5 1/2" MIN. LIGHT WEIGHT CONCRETE W/FIBERMESH ON EDCP750A, 16/18 GAGE GALVANIZED EPIC WIDEK BY EPIC METAL CORPORATION. SEE SECTION 930161.
 - REFER TO ARCHITECTURAL, MECHANICAL, PLUMBING AND ELECTRICAL DRAWINGS FOR HOUSEKEEPING AND/OR EQUIPMENT PADS, CURB SIZES AND LOCATIONS. SIZES AND LOCATIONS OF PAD SHALL BE VERIFIED WITH APPROVED MANUFACTURER'S EQUIPMENT SHOP DRAWING PRIOR TO CONSTRUCTION.
 - ALL FLOOR DRAINS MAY NOT BE SHOWN. COORDINATE EXACT LOCATIONS AND QUANTITIES WITH THE PLUMBING DRAWING. PROVIDE POSITIVE SLOPES (WARPS) IN T.O. FLOOR SLAB IN ORDER TO PROVIDE REQUIRED DRAINAGE. COORDINATE FLOOR FINISHES WITH THE ARCHITECT.
 - ALL BEAMS HAVE 1 ROW OF STUDS (UNO).
 NUMBER OF STUDS PER BEAM DENOTED THUS ()
 - COLUMN CALLOUT DENOTED THUS:
 Cxx → COLUMN DESIGNATION
 [SEE COLUMN SCHEDULE]
 - PROVIDE #4@12" o.c. TOP TRANSVERSE OVER ALL BEAMS W/#@12" o.c. LONGIT. (TYP.) SEE TYPICAL COMPOSITE SLAB REINF. DETAIL (1)S0202.
 - REFER TO ARCHITECTURAL DRAWINGS AND MEP DRAWINGS FOR SLAB OPENINGS AND PENETRATIONS.
 - REFER TO ARCHITECTURAL DRAWINGS FOR STAIR DIMENSION AND CONSTRUCTION, SLAB DEPRESSIONS AND ELEVATOR OPENINGS.
 - SEE STRUCTURAL LINTEL ELEVATION SHEETS FOR LINTEL BEAMS AND METAL PANEL FRAMING DETAILS.
 - PROVIDE 1/4" THICK BENT PLATE OR 1/4" THICK ANGLE FOR ALL DECK EDGE FRAMING, IF THE CANT. LENGTH IS LESS THAN OR EQUAL TO 1'-0". FOR COMPOSITE DECK EDGE DETAIL, SEE 2)S0202.
 - PROVIDE ADD'L REINF. (2) #5 BENEATH NON-LOAD BEARING CMU WALLS FOUNDED ON FLOOR SLAB.
 - PROVIDE SLIP CONNECTION PER DETAIL 2)S0200 FOR BEAMS BEARING ON MASONRY.
 - COORDINATE WITH ARCH. FOR SLAB EDGE / BOUNDARY DETAILS.

- LEGENDS:**
- [Symbol] = 12" REINFORCED CMU w/(2) #6 IN EACH CORE
 - [Symbol] = 12" REINFORCED CMU w/(2) #7 IN EACH CORE
 - [Symbol] = LOAD BEARING CMU WALL AND/OR EXTERIOR CMU WALL ABOVE
 - [Symbol] = 252 = ADDITIONAL VERTICAL CMU REINF. REQUIRED (SEE TYPICAL DETAIL)
 - [Symbol] = LOAD BEARING CMU WALL AND/OR EXTERIOR CMU WALL BELOW
 - [Symbol] = STANDARD S.J. BRIDGING
 - [Symbol] = INDICATES MOMENT CONNECTION BY OTHERS
 - [Symbol] = INDICATES CANTILEVER MOMENT CONNECTION BY OTHERS.
 - [Symbol] = REFER TYPICAL DETAIL 14)S0200 FOR BEAM AND COLUMN CONNECTION, (U.N.O.)
 - (A) = INDICATES TOP OF STEEL ELEVATION 114'-10"
 - (B) = INDICATES TOP OF STEEL ELEVATION 115'-3 7/8"
 - (C) = INDICATES TOP OF STEEL ELEVATION 137'-1 1/2"
 - (D) = INDICATES TOP OF STEEL ELEVATION 115'-1 3/4"
 - (E) = INDICATES TOP OF STEEL ELEVATION 113'-4 3/8"
 - (T) = INDICATES W17X06.5 ABOVE BEAM, T.O.S. EL. 115'-5 3/4"
 - (H1) = INDICATES HSS3X3X1/4 ABOVE ROOF BEAM, T.O.S. EL. VARIES, SEE PLAN
 - (H2) = INDICATES HSS2X1/2X3/16 ABOVE ROOF BEAM, T.O.S. EL. 137'-1 1/2"
 - (H3) = INDICATES HSS8X9X1/2 ABOVE ROOF BEAM, T.O.S. EL. VARIES, SEE PLAN
 - (H4) = INDICATES HSS10X10X1/2 ABOVE ROOF BEAM, T.O.S. EL. VARIES, SEE PLAN
 - [Symbol] = AEROBICS STORAGE FLOOR SLAB - 7 3/4" DEPRESSION
 - [Symbol] = AEROBICS FLOOR SLAB - 7 3/4" DEPRESSION
 - [Symbol] = RACQUET BALL FLOOR SLAB - 1 7/8" DEPRESSION
 - [Symbol] = GYM FLOOR SLAB - 2 1/2" DEPRESSION
 - [Symbol] = CLOUDED ITEMS WHERE CHANGED PER ADDENDUM
 - [Symbol] = ADDENDUM NUMBER

DISCLAIMER NOTE:
 THIS SET OF CONSTRUCTION DRAWINGS HAS BEEN UPDATED TO INCLUDE ANY CHANGES ISSUED THROUGH ADDENDUM OR OTHER MEANS. EVERY EFFORT HAS BEEN TAKEN TO INCLUDE ALL CHANGES TO DATE. THE CONTRACTOR IS STILL RESPONSIBLE FOR PROVIDING ANY ITEMS THAT WERE SHOWN AS PART OF THE ORIGINAL BID SET THAT MAY HAVE BEEN OVERLOOKED AND NOT INCLUDED IN THIS SET.



University of Louisville - Student Recreation Center (Phase #3 - Construction Set) Louisville, Ky

Omni ARCHITECTS
 212 North Upper Street
 Lexington, Kentucky 40507-1001
 p 859.252.6664 f 859.253.2388
 www.omniarchitects.com



#	Revision	Date
2	AREA-D	Jan 24, 2012

Drawing Name: LEVEL 02 FLOOR FRAMING PLAN - AREA-D
 U of L Project Number: Omni1 - 1105.00
 Project Number: Cannon - 08667.00
 Date: March 02, 2012
 Drawn By: VPP
 Checked By: ANTHONY

S0134

RANGASWAMY AND ASSOC., INC.
 Suite 420, The Landmark Building
 Louisville, Kentucky 40202
 Fax: (502) 586-2240; www.rangaswamy.com