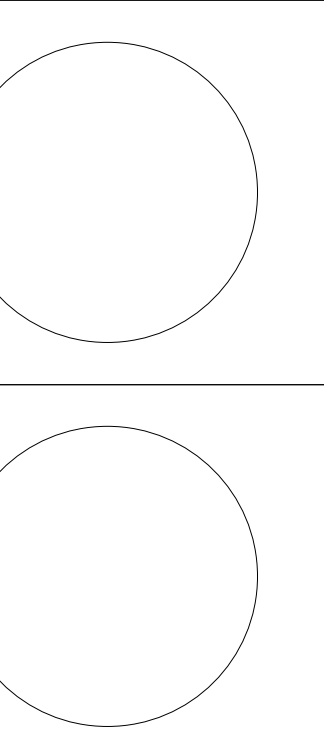


# University of Louisville - Student Recreation Center (Phase #3 - Construction Set) Louisville, Ky



212 North Upper Street  
Lexington, Kentucky 40507-1001  
p 859.252.6664 f 859.253.2358  
www.omniarchitects.com

**Omni** ARCHITECTS

**CANNONDESIGN**



#	Revision Date
2	Jan 24, 2012

Drawing Name: HIGH ROOF FRAMING PLAN

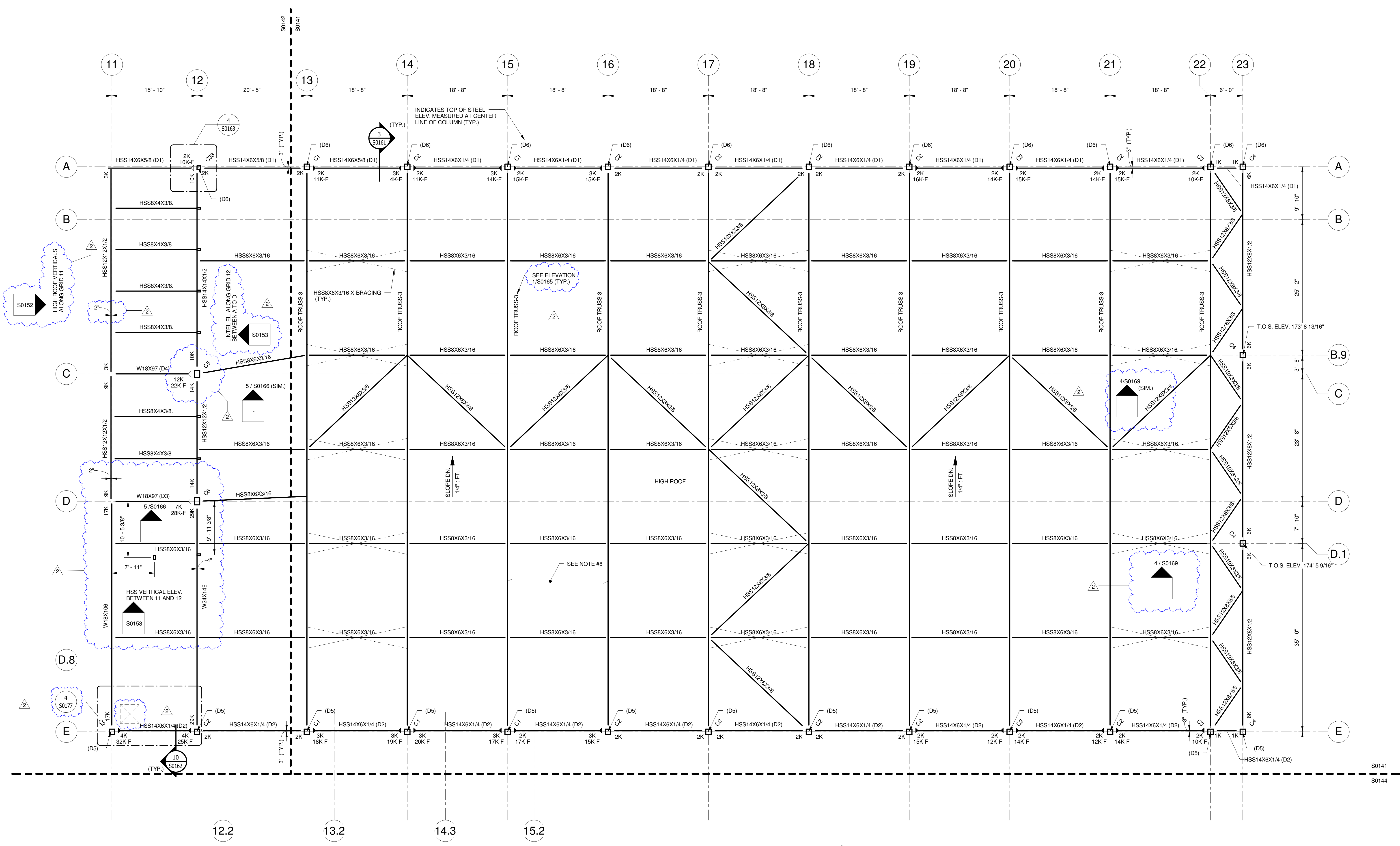
U of L Project Number: Omni1 - 1105.00 Cannon - 08667.00

Project Number: March 02, 2012

Date: VPP Checked By: ANTHONY

Drawn By:

**S0141**



**HIGH ROOF FRAMING PLAN**  
SCALE: 1/8" = 1'-0"

**LEGENDS:**

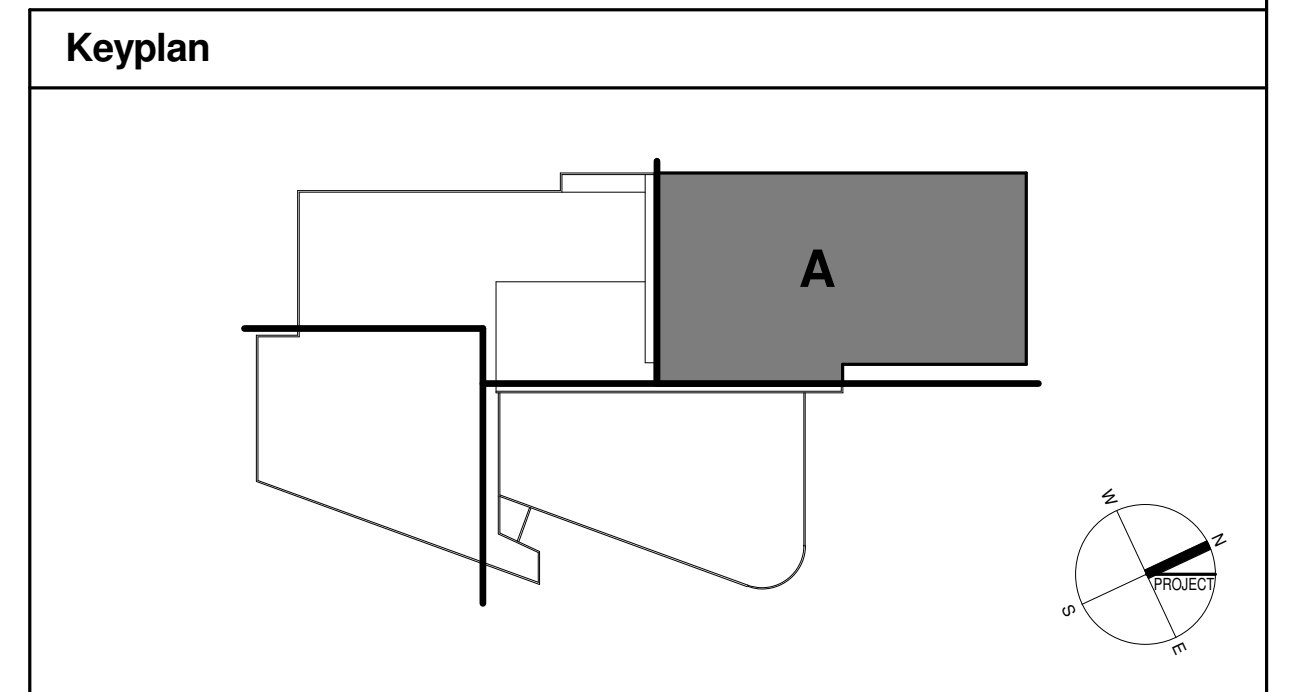
- 12" REINFORCED CMU w(2) #6 IN EACH CORE
- 12" REINFORCED CMU w(2) #7 IN EACH CORE
- LOAD BEARING CMU WALL AND/OR EXTERIOR CMU WALL ABOVE
- 252 = ADDITIONAL VERTICAL CMU REINF. REQUIRED (SEE TYPICAL DETAIL)
- LOAD BEARING CMU WALL AND/OR EXTERIOR CMU WALL BELOW
- STANDARD S.J.I. BRIDGING
- INDICATES MOMENT CONNECTION BY OTHERS
- INDICATES CANTILEVER MOMENT CONNECTION BY OTHERS
- REFER TYPICAL DETAIL 14/S0200 FOR BEAM AND COLUMN CONNECTION. (U.N.O.)
- (A) = INDICATES TOP OF STEEL ELEVATION 114'-10"
- (B) = INDICATES TOP OF STEEL ELEVATION 115'-3 7/8"
- (C) = INDICATES TOP OF STEEL ELEVATION 137'-1 1/2"
- (D) = INDICATES TOP OF STEEL ELEVATION 115'-1 3/4"
- (E) = INDICATES TOP OF STEEL ELEVATION 113'-4 3/8"
- (T) = INDICATES W7X96.5 ABOVE BEAM, T.O.S. EL. 115'-5 3/4"
- (H1) = INDICATES HSS3X3X1/4 ABOVE ROOF BEAM, T.O.S. EL. VARIES, SEE PLAN
- (H2) = INDICATES HSS5X2 1/2X3/16 ABOVE FLOOR BEAM, T.O.S. EL. 137'-1 1/2"
- (H3) = INDICATES HSS8X9X1/2 ABOVE ROOF BEAM, T.O.S. EL. VARIES, SEE PLAN
- (H4) = INDICATES HSS10X10X1/2 ABOVE ROOF BEAM, T.O.S. EL. VARIES, SEE PLAN
- AEROBICS STORAGE FLOOR SLAB - 7 3/4" DEPRESSION
- AEROBICS FLOOR SLAB - 7 3/4" DEPRESSION
- RACQUET BALL FLOOR SLAB - 1 7/8" DEPRESSION
- GYM FLOOR SLAB - 2 1/2" DEPRESSION

**DISCLAIMER NOTE:**  
THIS SET OF CONSTRUCTION DRAWINGS HAS BEEN UPDATED TO INCLUDE ANY CHANGES ISSUED THROUGH ADDENDUM OR OTHER MEANS. EVERY EFFORT HAS BEEN TAKEN TO INCLUDE ALL CHANGES TO DATE. THE CONTRACTOR IS STILL RESPONSIBLE FOR PROVIDING ANY ITEMS THAT WERE SHOWN AS PART OF THE ORIGINAL BID SET THAT MAY HAVE BEEN OVERLOOKED AND NOT INCLUDED IN THIS SET.

**KEY NOTES:**

- (D1) = TOP OF STEEL EL. 173'-0 1/16"
- (D2) = TOP OF STEEL EL. 175'-2 5/16"
- (D3) = TOP OF STEEL EL. 174'-3 5/8"
- (D4) = TOP OF STEEL EL. 173'-9 11/16"
- (D5) = TOP OF STEEL EL. 175'-2 3/8"
- (D6) = TOP OF STEEL EL. 173'-0"

- HIGH ROOF FRAMING NOTES:**
- #1. TOP OF STEEL ELEVATION VARIES. SEE ROOF PROFILES.
  - #2. LINTEL SUPPORT HSS TUBE COLUMN. SEE STRUCTURAL EXTERIOR LINTEL ELEVATION SHEETS FOR HSS LINTEL BEAM.
  - #3. PROVIDE 1/4" THICK BENT PLATE OR 1/4" THICK ANGLE FOR ALL DECK EDGE FRAMING.
  - #4. TOP OF STEEL ELEVATION AS PER THE KEYNOTES REFERS TO THE COLUMN AND ALL BEAMS FRAMING INTO THE COLUMN. THE STEEL WILL BE SLOPED AT THIS LEVEL.
  - #5. COLUMN CALLOUT DENOTED THUS:  
Cxx → COLUMN DESIGNATION (SEE COLUMN SCHEDULE)
  - #6. TYPICAL ROOF DECK TYPE B, 1 1/2" DEEP 20 GAGE G-90 DECKING BY VULCRAFT OR APPROVED EQUIVALENT. (TYP. U.N.O.)
  - #7. TYPICAL DEEP-DEK 6" CELLULAR ACOUSTICAL ROOF DECK, 16/18 GAGE GALVANIZED DECKING (SINGLE SPAN CONDITION) BY METAL DEK GROUP, A UNIT OF CSI PRODUCTS
  - #8. TYPICAL DEEP-DEK 4 3/8" CELLULAR ACOUSTICAL ROOF DECK, 16/18 GAGE GALVANIZED DECKING (SINGLE SPAN CONDITION) BY METAL DEK GROUP, A UNIT OF CSI PRODUCTS.
  - #9. WELD OR SCREW METAL DECK TO SUPPORTS PER THE DECKING SUPPLIER'S SHOP DRAWING DETAILS. DECKING SUPPLIER MUST GRANT PERMISSION FOR ANY CHANGES TO THE ATTACHMENT METHODS.



© Cannon Design 2010  
All rights reserved.  
This drawing may not be reproduced or utilized in any form without the written authorization by The Cannon Corporation.  
02-03-2012 13:38:17