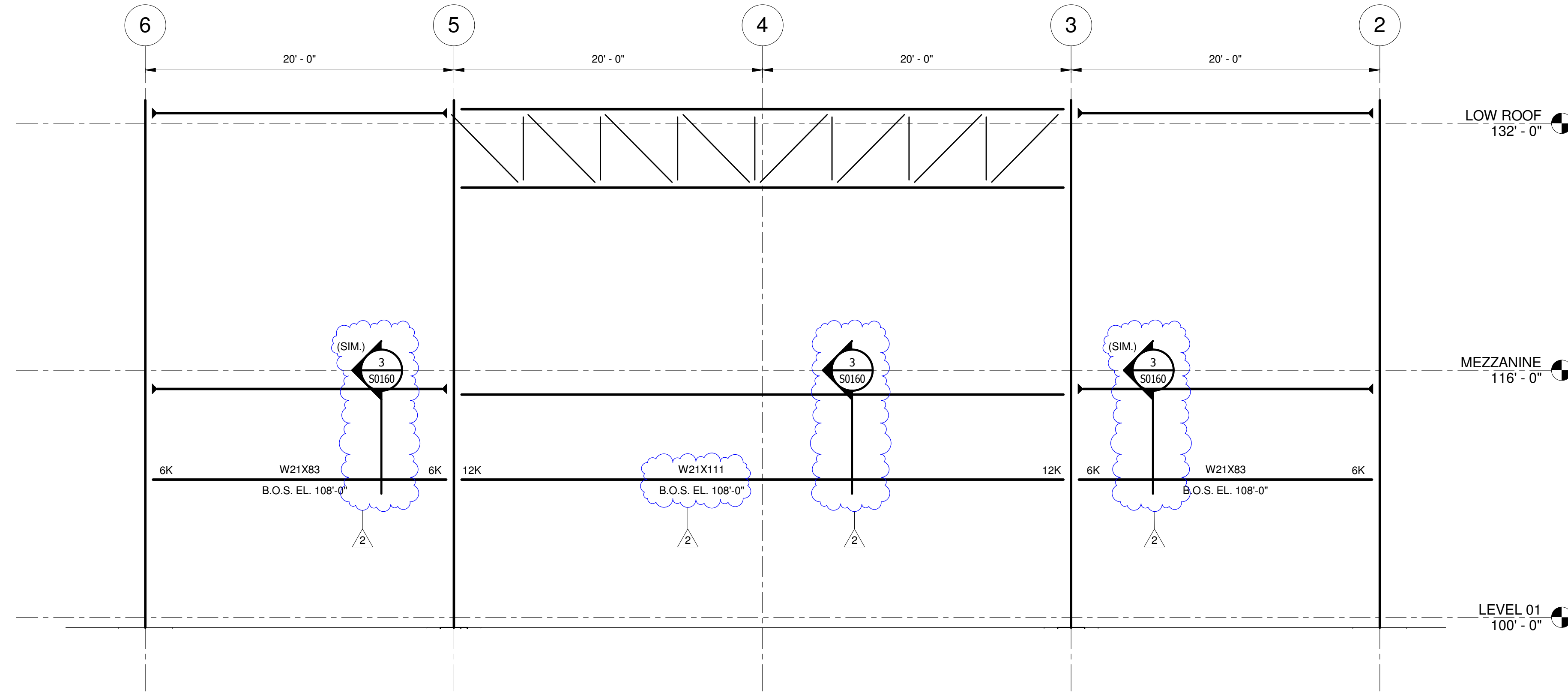
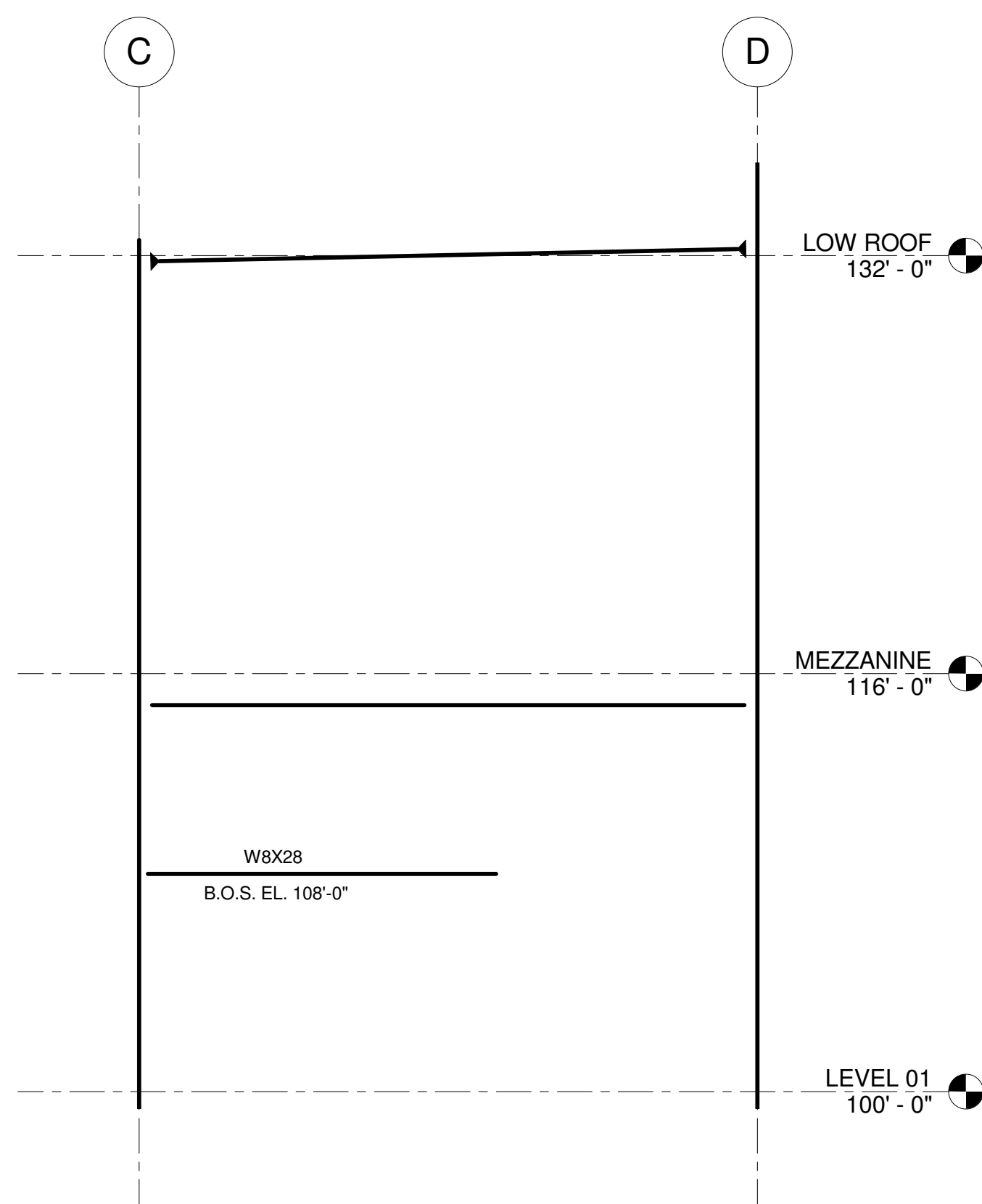


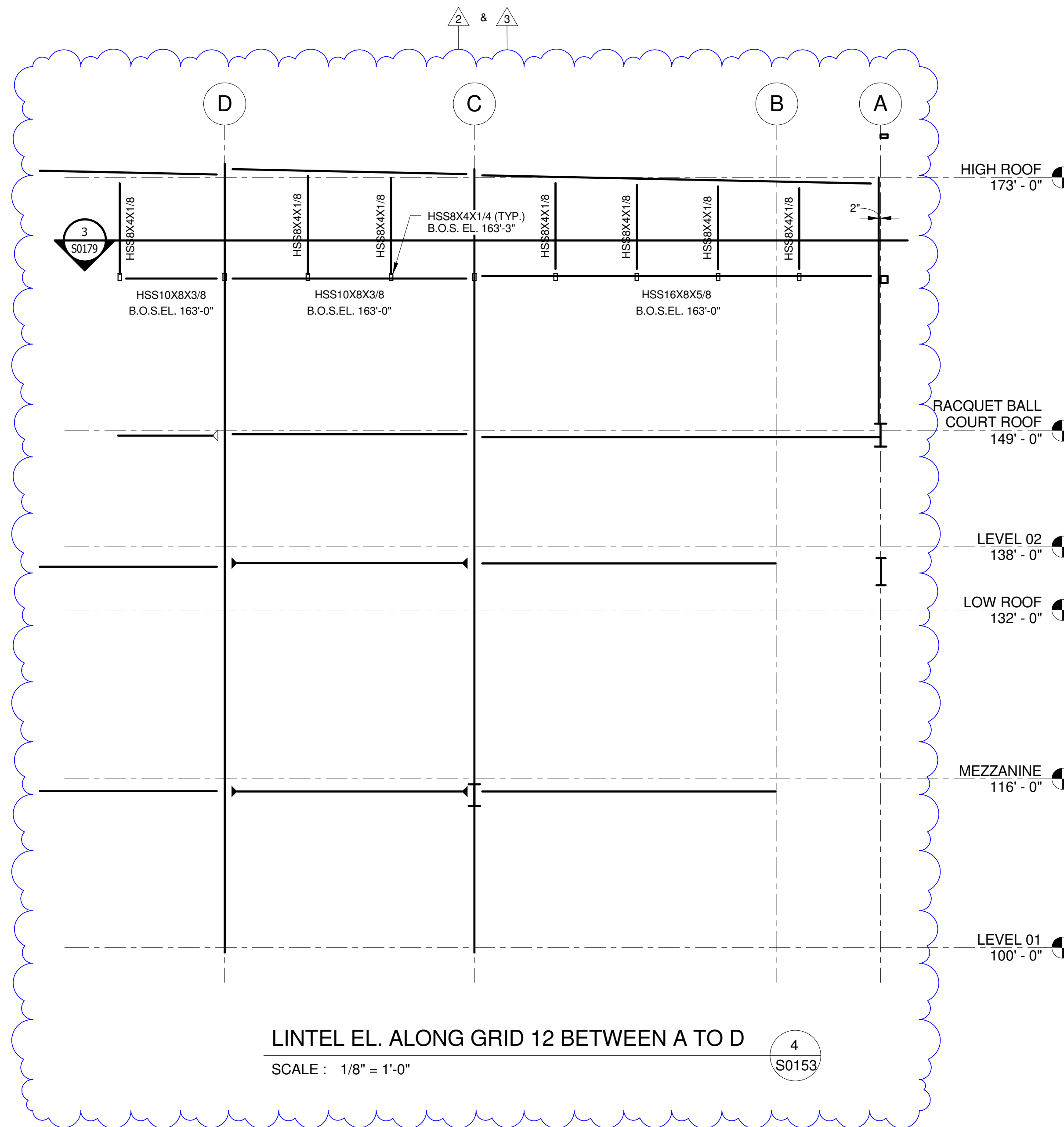
LINTEL EL. ALONG GRID 1.5
SCALE: 3/16" = 1'-0"
1 S0153



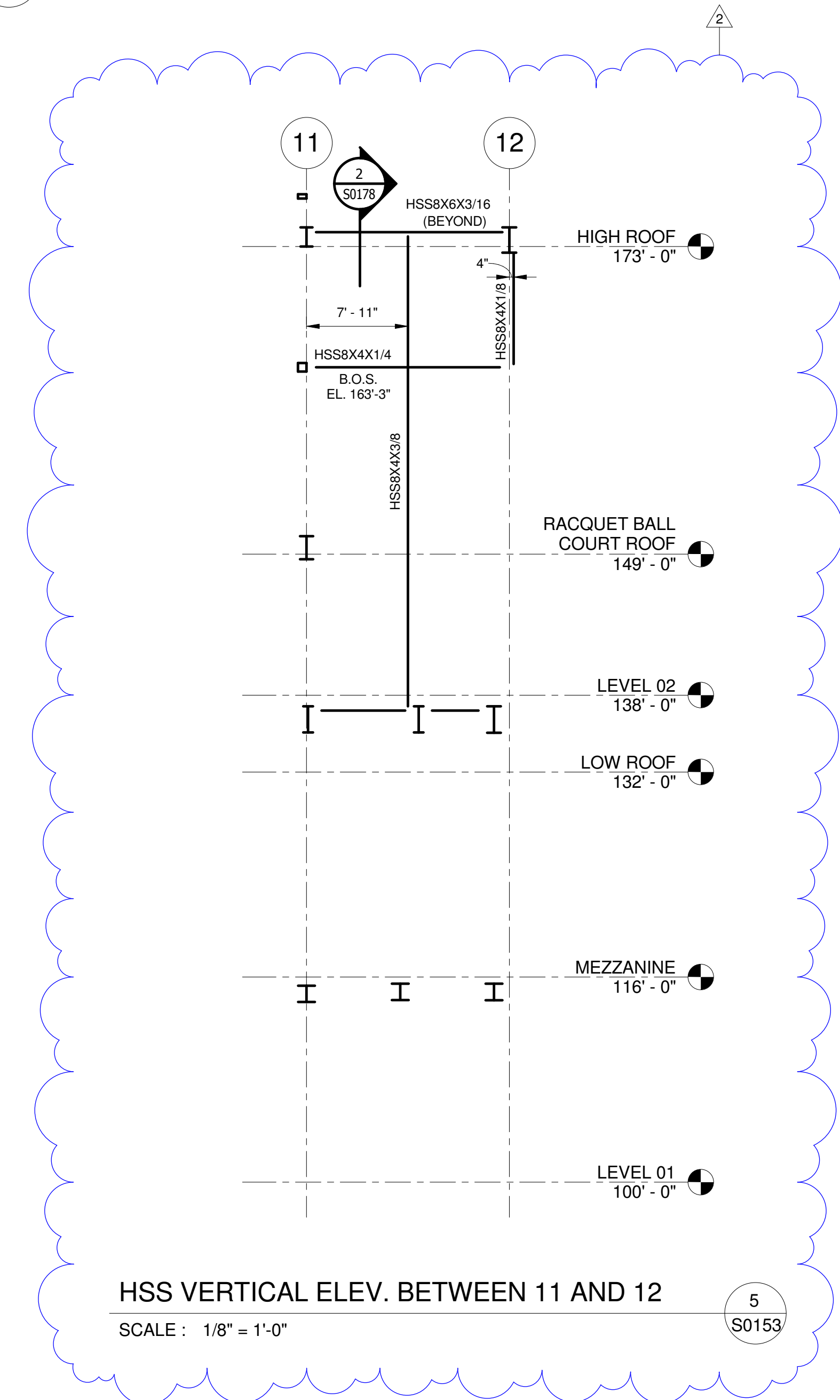
LINTEL ELEVATION ALONG GRID D.4
BETWEEN 2 TO 6
SCALE: 3/16" = 1'-0"
2 S0153



LINTEL EL. ALONG GRID 7 BETWEEN C & D
SCALE: 3/16" = 1'-0"
3 S0153



LINTEL EL. ALONG GRID 12 BETWEEN A TO D
SCALE: 1/8" = 1'-0"
4 S0153



HSS VERTICAL ELEV. BETWEEN 11 AND 12
SCALE: 1/8" = 1'-0"
5 S0153

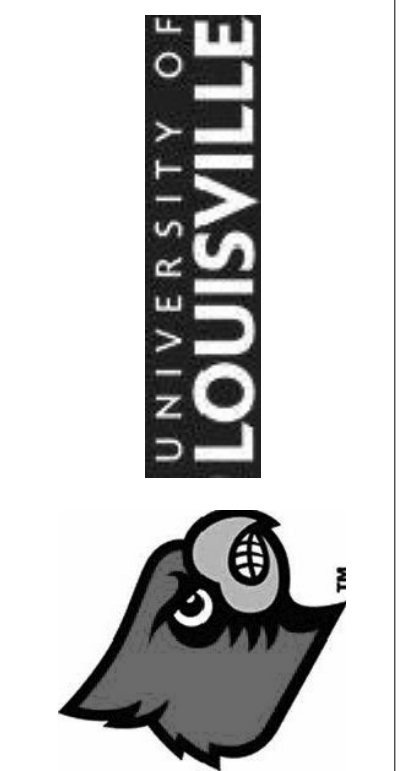
LEGEND:
 = CLOUDED ITEMS WHERE CHANGED PER ADDENDUM
 = ADDENDUM NUMBER

DISCLAIMER NOTE:
 THIS SET OF CONSTRUCTION DRAWINGS HAS BEEN UPDATED TO INCLUDE ANY CHANGES ISSUED THROUGH ADDENDUM OR OTHER MEANS. EVERY EFFORT HAS BEEN TAKEN TO INCLUDE ALL CHANGES TO DATE. THE CONTRACTOR IS STILL RESPONSIBLE FOR PROVIDING ANY ITEMS THAT WERE SHOWN AS PART OF THE ORIGINAL BID SET THAT MAY HAVE BEEN OVERLOOKED AND NOT INCLUDED IN THIS SET.

University of Louisville - Student Recreation Center (Phase #3 - Construction Set) Louisville, Ky

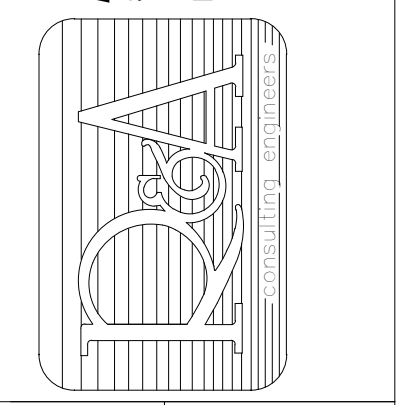
#	Revision Date
2	Jan 24, 2012
3	Jan 31, 2012

Drawing Name: STRUCTURAL INTERIOR LINTEL ELEVATIONS
 U of L Project Number: Omni1 - 1105.00
 Project Number: Cannon - 08667.00
 Date: March 02, 2012
 Drawn By: VPP
 Checked By: ANTHONY

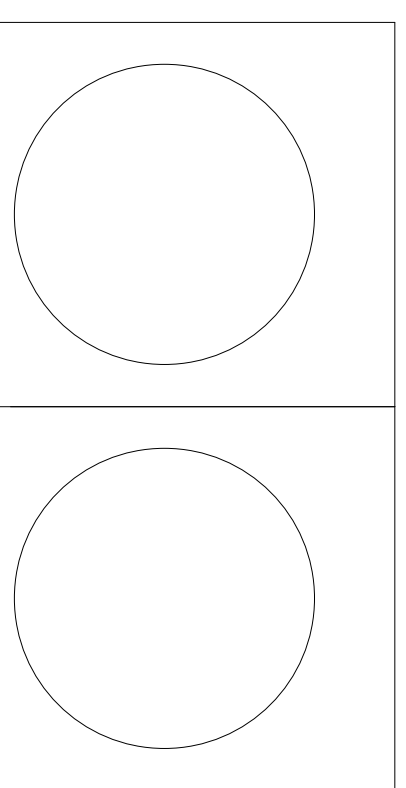


Omni ARCHITECTS

212 North Upper Street
 Lexington, Kentucky 40507-1001
 p 859.252.6664 f 859.253.2358
 www.omniarchitects.com



RANGASWAMY AND ASSOC., INC.
 Suite 420, The Landmark Building
 Louisville, Kentucky 40202
 Fax: (606) 598-2240
 www.rangaswamy.com



S0153