

NOTES:

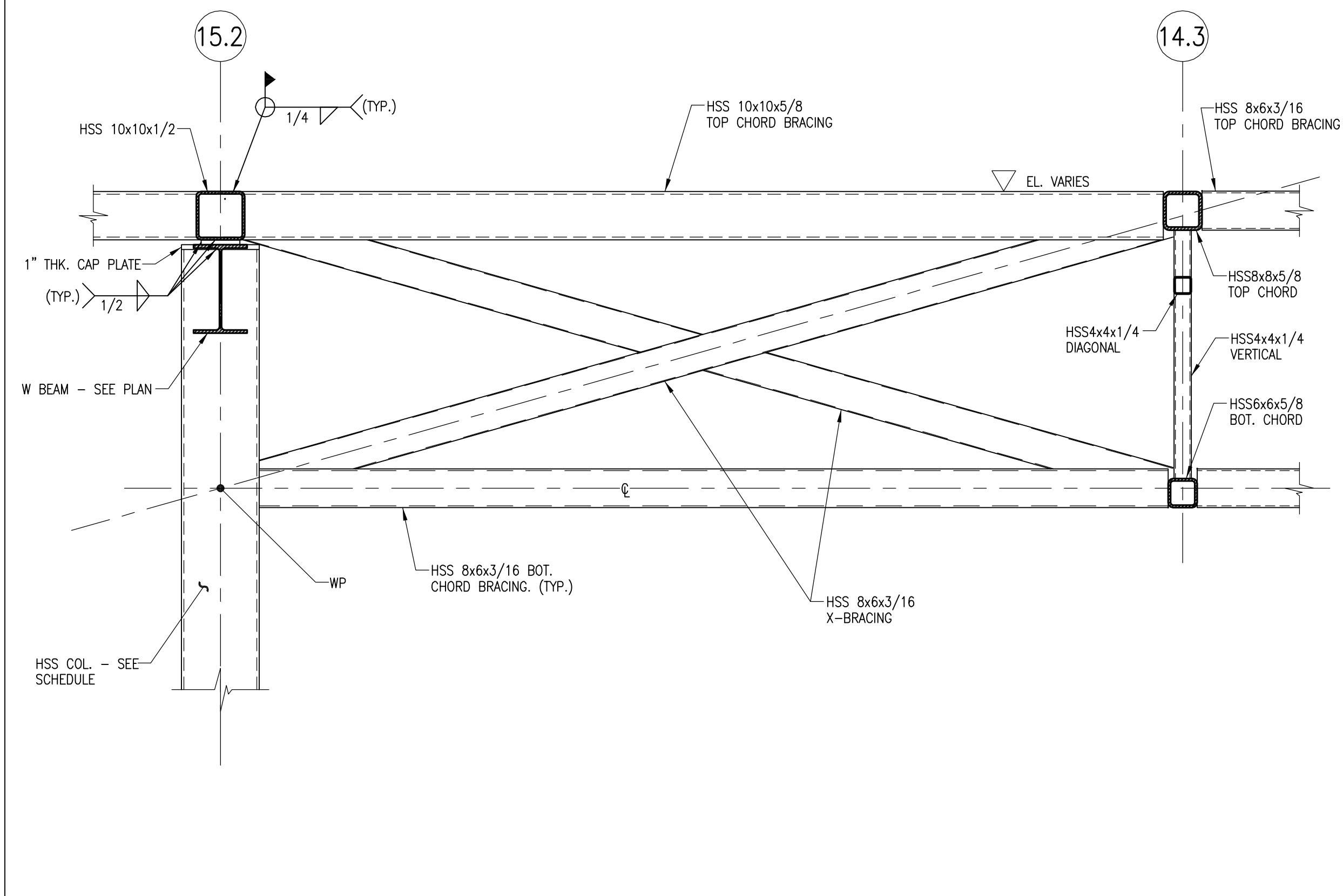
1. ROOF DECK NOT SHOWN FOR CLARITY.
2. THE MID 1/3 SPAN OF THE TOP AND BOTTOM CHORDS MUST BE ONE CONTINUOUS MEMBER.
3. TRUSS BOTTOM CHORD EXTENSION TO BE ATTACHED TO COLUMN ONLY WHEN ALL UPPER LEVEL DEAD LOADS ARE IN PLACE.

FITNESS ROOF TRUSS ELEVATION ALONG GRID 14.3

SCALE: 1/4"=1'-0"

S0169

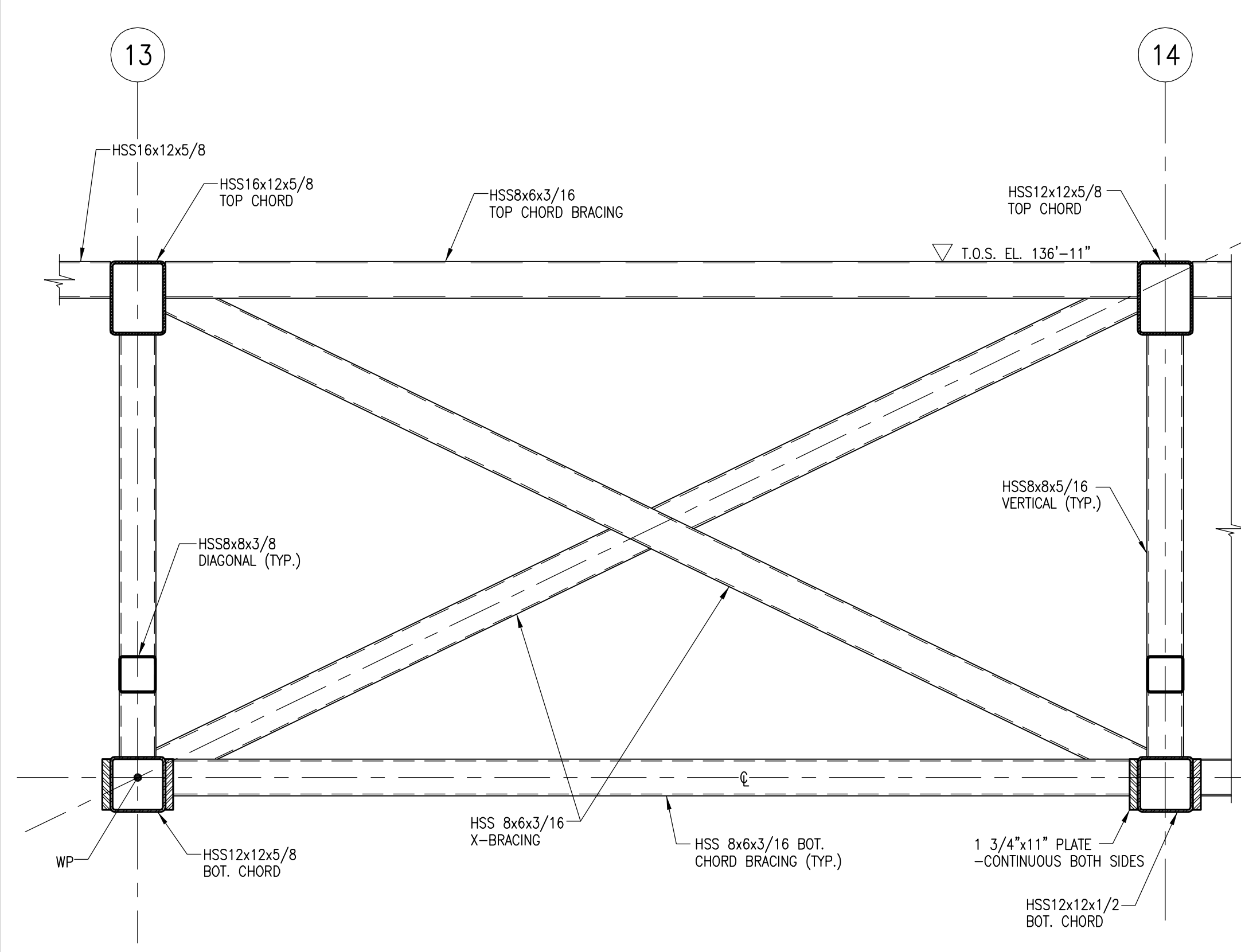
LEGENDS:
 (T) - TENSION
 (C) - COMPRESSION
 (S) - SHEAR



BRACING ELEVATION AT FITNESS ROOF B/W GRID 14.3 TO 15.2

SCALE: 1/2"=1'-0"

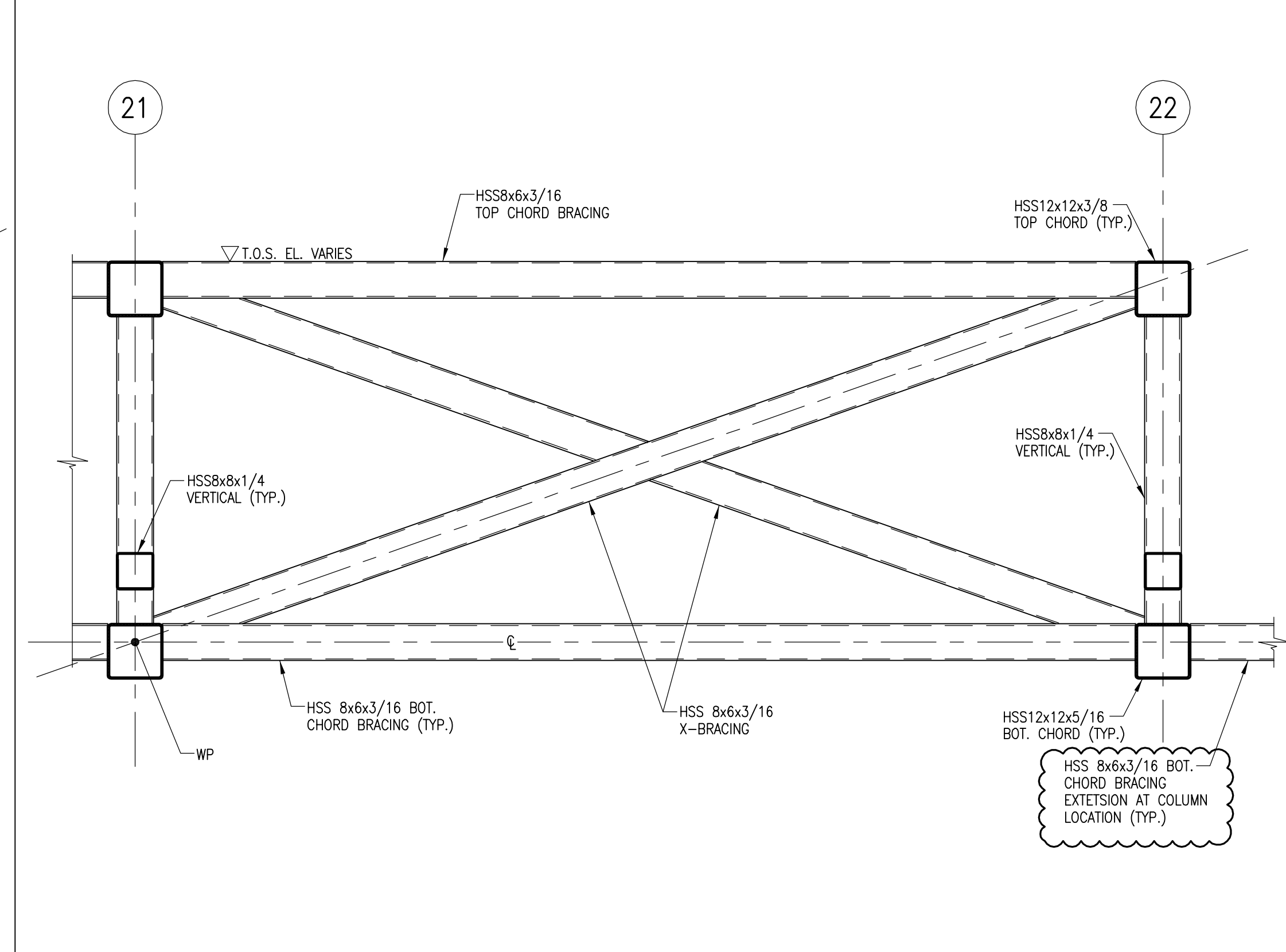
S0169



BRACING ELEVATION AT GYM FLOOR

SCALE: 1/2"=1'-0"

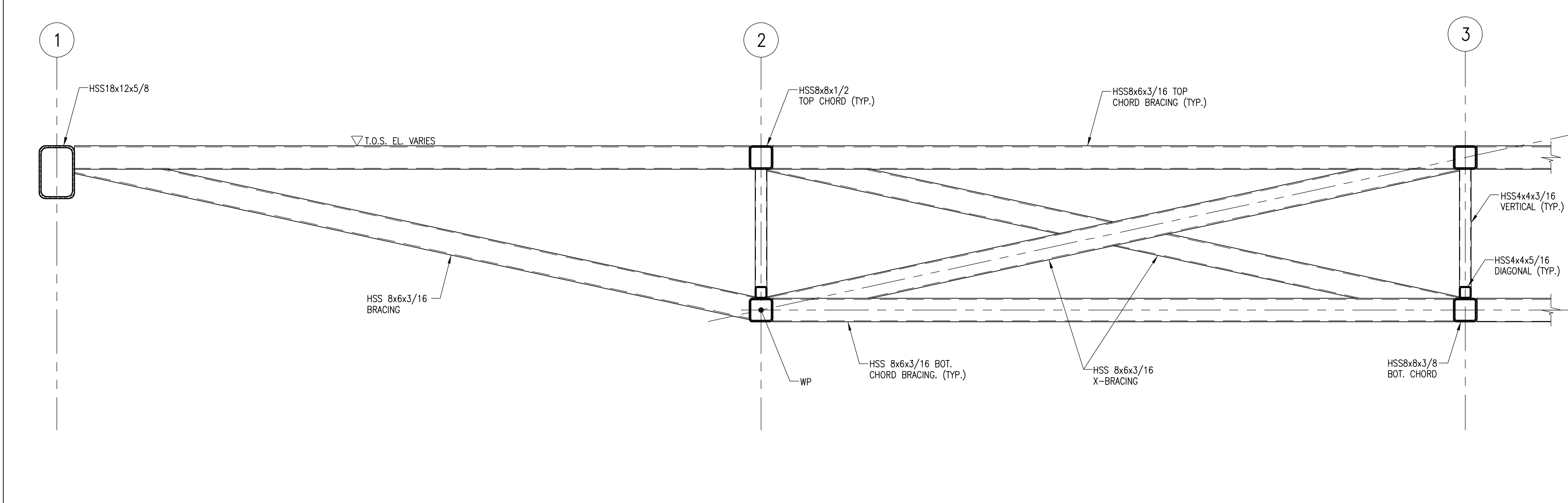
S0169



BRACING ELEVATION AT HIGH ROOF

SCALE: 1/2"=1'-0"

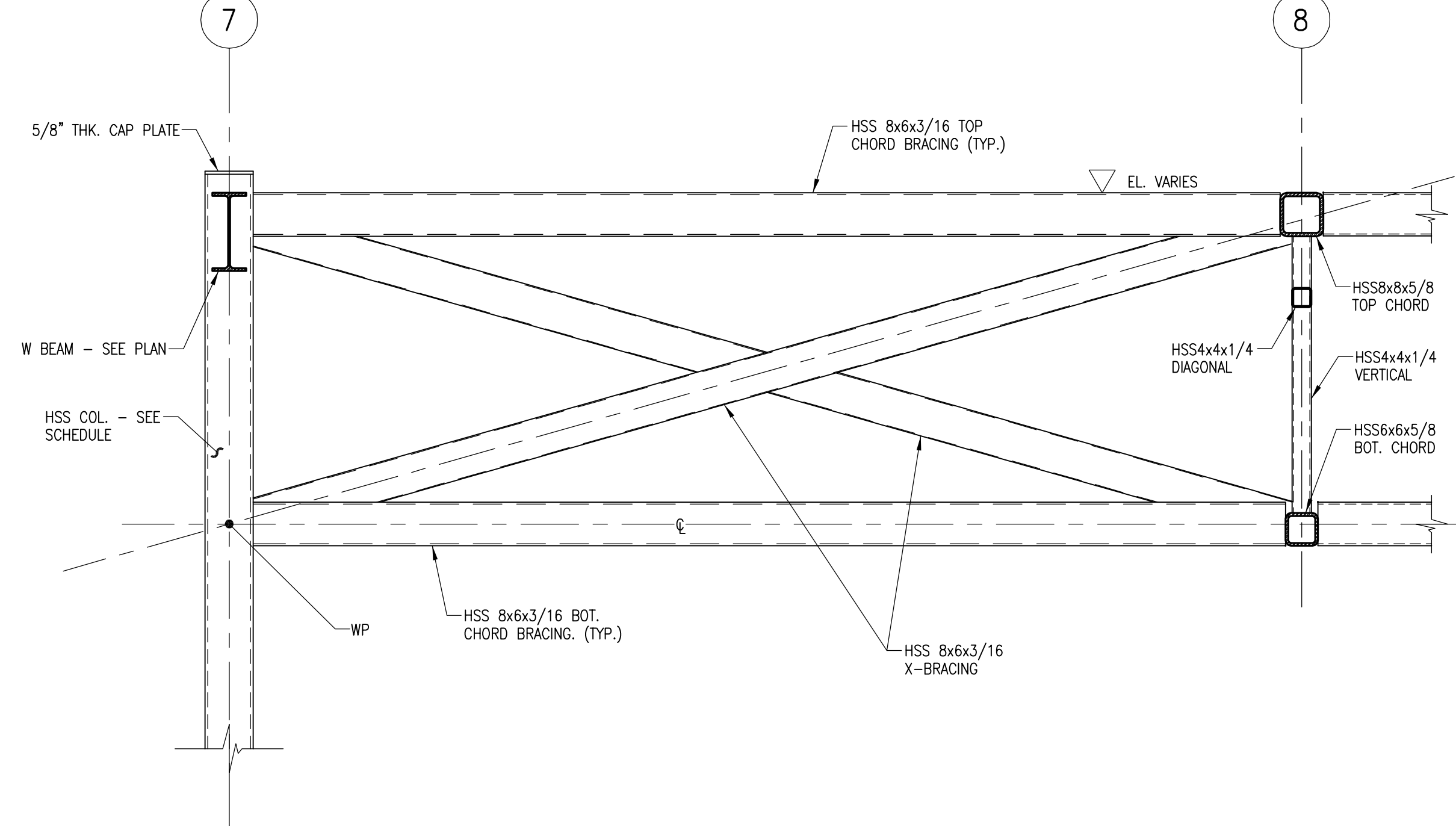
S0169



BRACING ELEVATION AT MAC GYM ROOF

SCALE: 1/2"=1'-0"

S0169



BRACING ELEVATION AT FITNESS ROOF

SCALE: 1/2"=1'-0"

S0169

DISCLAIMER NOTE:

THIS SET OF CONSTRUCTION DRAWINGS HAS BEEN UPDATED TO INCLUDE ANY CHANGES ISSUED THROUGH ADDENDUM OR OTHER MEANS. EVERY EFFORT HAS BEEN TAKEN TO INCLUDE ALL CHANGES TO DATE. THE CONTRACTOR IS STILL RESPONSIBLE FOR PROVIDING ANY ITEMS THAT WERE SHOWN AS PART OF THE ORIGINAL BID SET THAT MAY HAVE BEEN OVERLOOKED AND NOT INCLUDED IN THIS SET.

<p>Omni ARCHITECTS</p> <p>212 North Upper Street Lexington, Kentucky 40507-1001 p 859.252.6664 f 859.253.2358 www.omniarchitects.com</p>	<p>CANNONDESIGN</p>	<p>UNIVERSITY OF LOUISVILLE</p>		<p>Revision Date</p>
				<p>#</p>
<p>Drawing Name: SECTIONS AND DETAILS</p>	<p>U of L Project Number: Omni - 1105.00 Cannon - 05667.00</p>	<p>Project Number: Omni - 1105.00 Cannon - 05667.00</p>	<p>Date: March 02, 2012</p>	<p>Drawn By: ANTHONY</p>
<p>Checked By: ND</p>	<p>Checked By: ANTHONY</p>	<p>Checked By: ANTHONY</p>	<p>Checked By: ANTHONY</p>	<p>Checked By: ANTHONY</p>

S0169

© Cannon Design 2010. All rights reserved. This document may be reproduced or distributed in any form without prior written authorization by The Cannon Corporation.