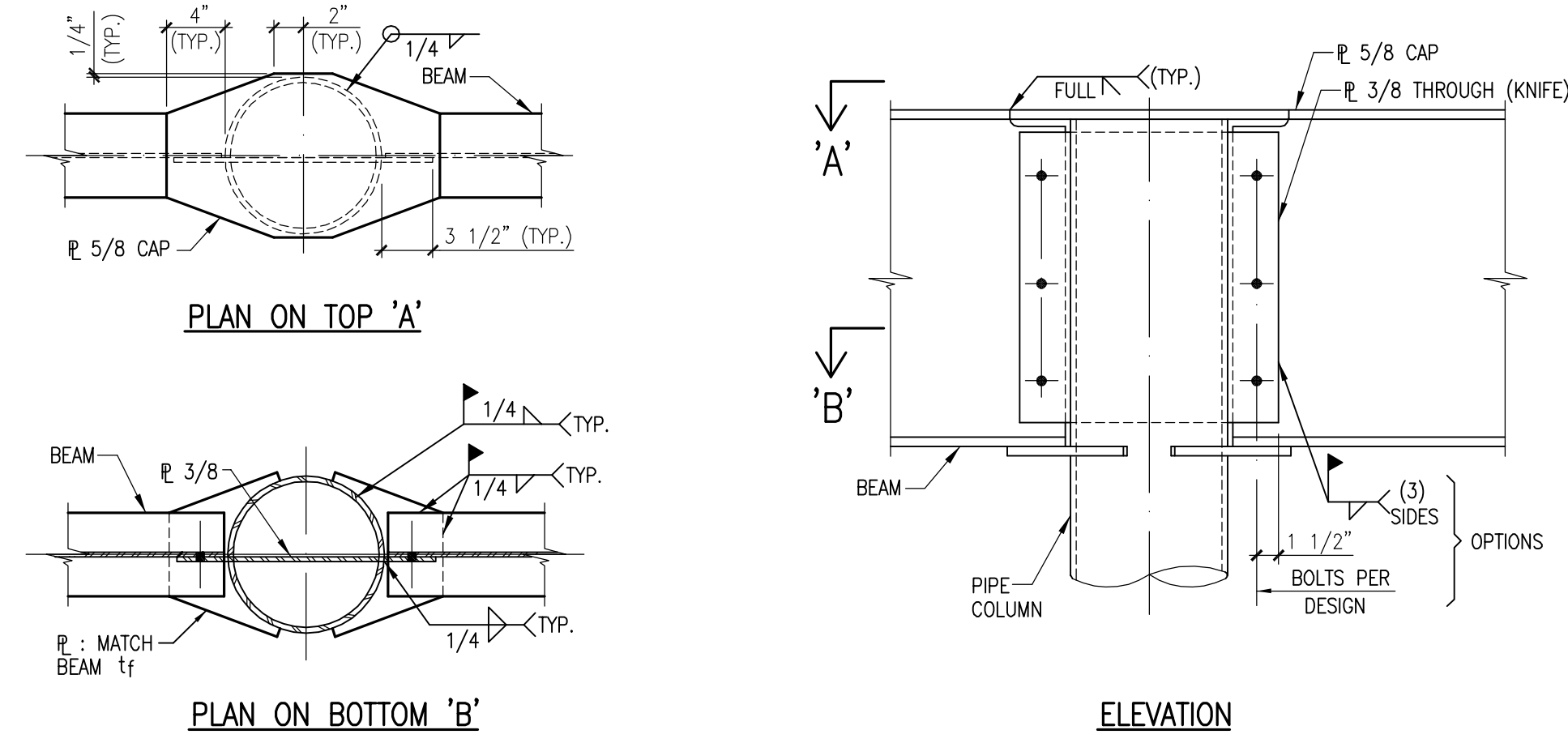


BEAM WIDTH NARROWER THAN COLUMN

BEAM WIDTH EQUAL TO OR WIDER THAN COLUMN

TYPICAL MOMENT CONNECTION DETAIL (U.N.O.) - (W-BEAM AT HSS COLUMN)
 NOT TO SCALE

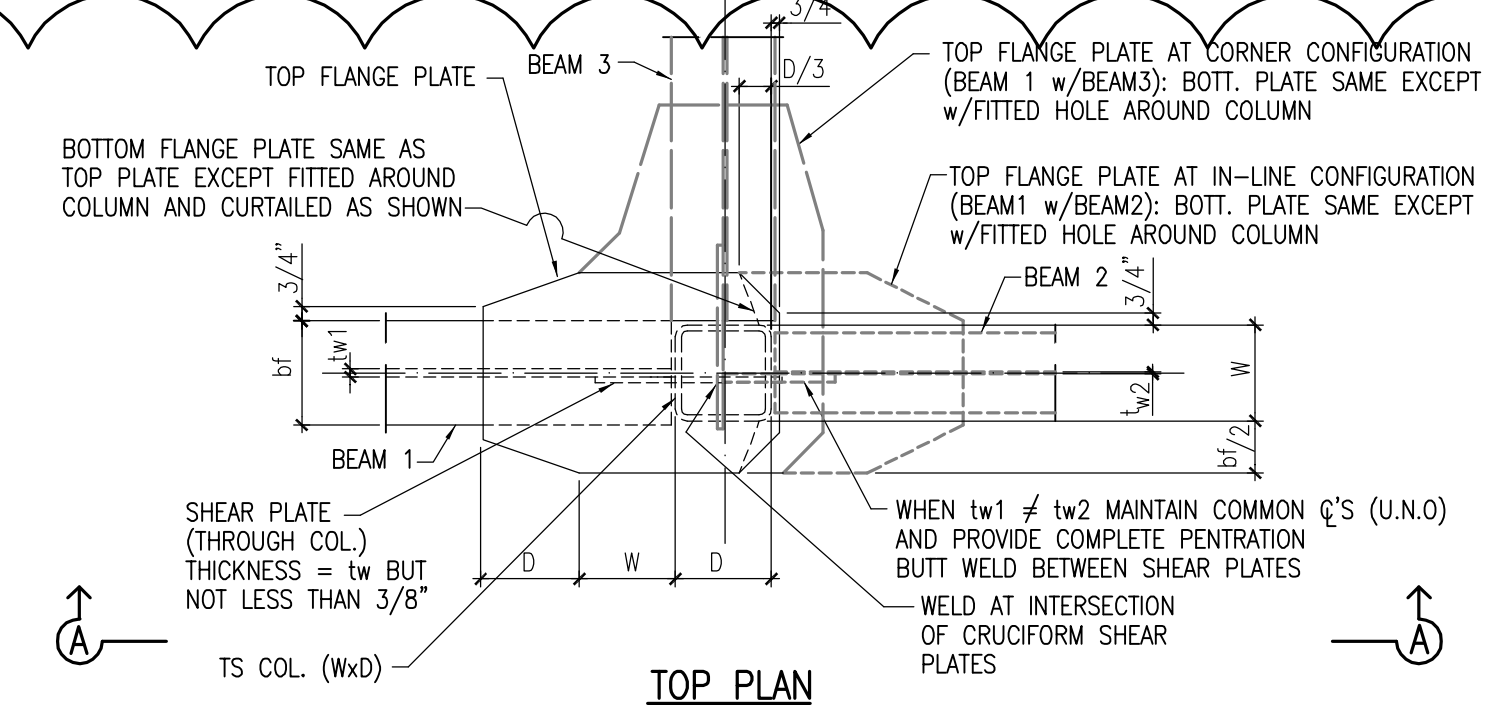
1
 S0209



- NOTES:**
- MOMENT CONNECTIONS ARE INDICATED ON PLAN THIS: \rightarrow
 - CONCEPTUAL ARRANGEMENTS SHOWN HERE. FABRICATOR TO DESIGN CONNECTION TO DEVELOP FULL MOMENT CAPACITY (SEE GENERAL PROVISIONS).
 - SINGLE BEAM CONNECTIONS SIMILAR.

TYPICAL DETAIL - BEAM TO TUBE OR PIPE COLUMN MOMENT CONNECTION (U.N.O.)
 NOT TO SCALE

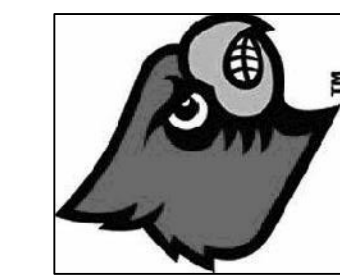
2
 S0209



TYPICAL MOMENT CONNECTION DETAIL (U.N.O.)
 WIDE FLANGE BEAM AT TS COLUMN
 NOT TO SCALE

3
 S0209

DISCLAIMER NOTE:
 THIS SET OF CONSTRUCTION DRAWINGS HAS BEEN UPDATED TO INCLUDE ANY CHANGES ISSUED THROUGH ADDENDUM OR OTHER MEANS. EVERY EFFORT HAS BEEN TAKEN TO INCLUDE ALL CHANGES TO DATE. THE CONTRACTOR IS STILL RESPONSIBLE FOR PROVIDING ANY ITEMS THAT WERE SHOWN AS PART OF THE ORIGINAL BID SET THAT MAY HAVE BEEN OVERLOOKED AND NOT INCLUDED IN THIS SET.

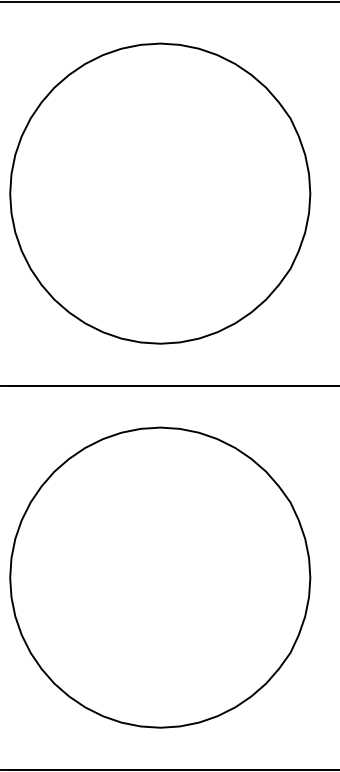
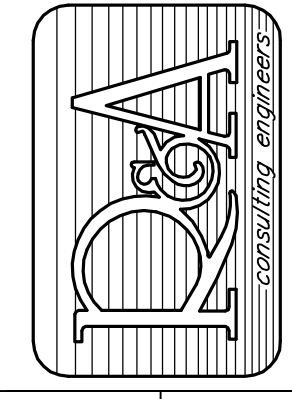


UNIVERSITY OF LOUISVILLE

Omni ARCHITECTS
 212 North Upper Street
 Lexington, Kentucky 40507-1001
 P 859.252.6664 F 859.253.2358
 www.omniarchitects.com

CANNONDESIGN

RANGASWAMY AND ASSOC., INC.
 Suite 420, The Landmark Building
 1001 W. Main Street, Louisville, KY 40202
 Phone: (502) 588-2212
 Fax: (502) 588-2240 www.rangaswamy.com



#	Revision Date	Revision	
		By	Check

Drawing Name: TYPICAL DETAILS	Checked By: ANTHONY
U of L Project Number: Omni - 1105.00	PKG
Project Number: Omni - 1105.00 Cannon - 03667.00	Drawn By: ANTHONY
Date: March 02, 2012	Checked By: ANTHONY

S0209