

# University of Louisville - Student Recreation Center (Phase #4 - Construction Set) Louisville, Ky

**Omni** ARCHITECTS

212 North Upper Street  
Lexington, Kentucky 40507-1001  
p 859.252.6864 f 859.253.2388  
www.omniarchitects.com

**CANNONDESIGN**

UNIVERSITY OF LOUISVILLE



#	Revision Date
1	Feb 27, 2012
2	Mar 05, 2012
3	Mar 12, 2012
4	Apr 16, 2012

Drawing Name: SLAB ON GRADE PLAN - AREA-D  
 U of L Project Number: Omni - 1105.00  
 Project Number: Cannon - 08667.00  
 Date: April 16, 2012  
 Drawn By: VPP  
 Checked By: ANTHONY

- SLAB ON GRADE NOTES:**
- TYPICAL INTERIOR SLAB ON GRADE: 5" THICK SLAB w/w W.F. 4x4 - W4xW4 OVER 15 MIL POLY VAPOR BARRIER OVER 4" GRAVEL BASE PER TYPICAL DETAILS.
  - REFER TO ARCHITECTURAL, MECHANICAL, PLUMBING AND ELECTRICAL DRAWINGS FOR HOUSEKEEPING AND/OR EQUIPMENT PADS, CURB SIZES AND LOCATIONS. SIZES AND LOCATIONS OF PAD SHALL BE VERIFIED WITH APPROVED MANUFACTURER'S EQUIPMENT SHOP DRAWING PRIOR TO CONSTRUCTION.
  - SLAB CONSTRUCTION AND/OR CRACK - CONTROL JOINTS LOCATIONS, INDICATED ON THE PLANS ARE CONCEPTUAL ONLY. THE CONTRACTOR IS RESPONSIBLE FOR THE FINAL LAYOUT & PLACEMENT OF THE REQUIRED SLAB JOINTS AS NOTED IN GENERAL PROVISIONS AND TYPICAL DETAILS. SUBMIT JOINT SCHEMATIC TO ARCHITECT FOR REVIEW PRIOR TO SLAB POURS.
  - ISOLATION JOINT IN SLAB ON GRADE AT COLUMNS PER TYPICAL DETAILS.
  - PROVIDE ADD'L. REINF. @ SLAB RE-ENTRANT CORNERS PER TYPICAL DETAILS.
  - PROVIDE SLAB REINF. BENEATH NON-LOAD BEARING CMU WALLS FOUNDED ON SLABS ON GRADE PER TYPICAL DETAILS.
  - CMU WALLS NOT SHOWN FOR CLARITY. REFER ARCHITECT FOR EXACT LOCATION AND WALL HEIGHT.
  - SLAB THICKENING BENEATH CMU WALLS NOT SHOWN FOR CLARITY. SEE TYPICAL DETAILS.
  - RECESS SLAB BENEATH REFRIGERATORS - VERIFY SLAB ELEVATION WITH ARCHITECT PER TYPICAL DETAILS.
  - ALL FLOOR DRAINS MAY NOT BE SHOWN. COORDINATE EXACT LOCATIONS AND QUANTITIES WITH THE PLUMBING DRAWING. PROVIDE POSITIVE SLOPES WARPS TO THE FLOOR SLAB IN ORDER TO PROVIDE REQUIRED DRAINAGE. COORDINATE FLOOR FINISHES WITH THE ARCHITECT.
  - REFER TO ARCHITECTURAL DRAWINGS AND MEP DRAWINGS FOR SLAB OPENINGS AND PENETRATIONS.
  - VERIFY ALL ELEVATOR DIMENSIONS, INCLUDING PIT DEPTH, AND COORDINATE ANY SLEEVES OR BLOCKOUTS WITH ELEVATOR MANUFACTURER. COORDINATE SUMP PIT LOCATION WITH ARCHITECTURAL DRAWINGS.
  - PROVIDE ADD'L. REINF. @ ACUTE CORNERS OF SLAB PER TYPICAL DETAILS.
  - SLAB REBARS SHALL NOT CROSS UNDER SAWN CONTROL JOINTS. CONTRACTOR SHALL EITHER PRE-PLAN REBAR POSITIONS PRIOR TO SLAB POUR; OR ASSURE THAT SAW CUT DEPTH WILL ALSO CUT THROUGH SLAB REBARS.
  - VERIFY AND COORDINATE THE SLAB ON GRADE SLOPES WITH ARCHITECTURAL DRAWINGS.
  - BRACE TOP OF INTERIOR CMU WALL TO STRUCTURE ABOVE. SEE TYPICAL DETAILS.

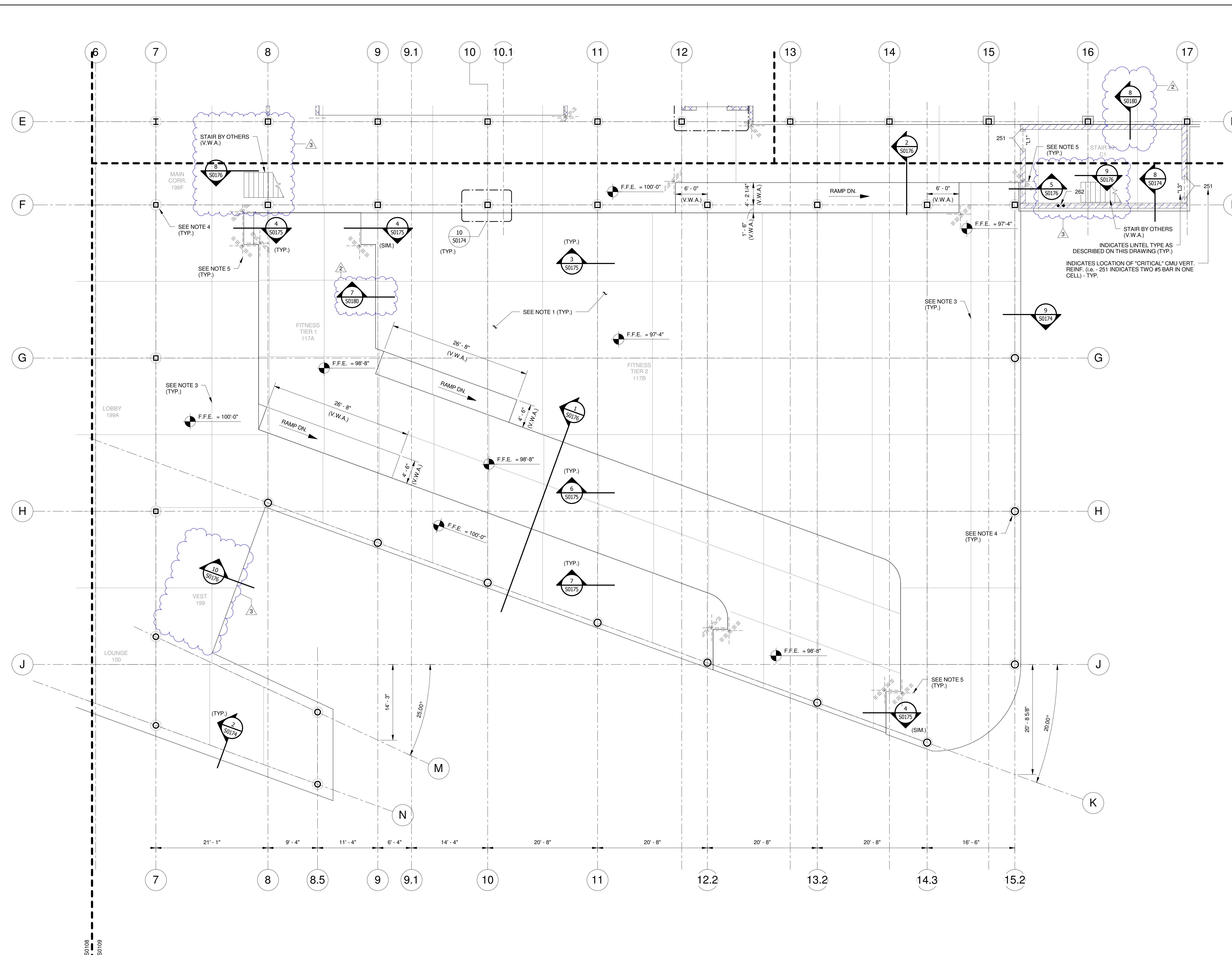
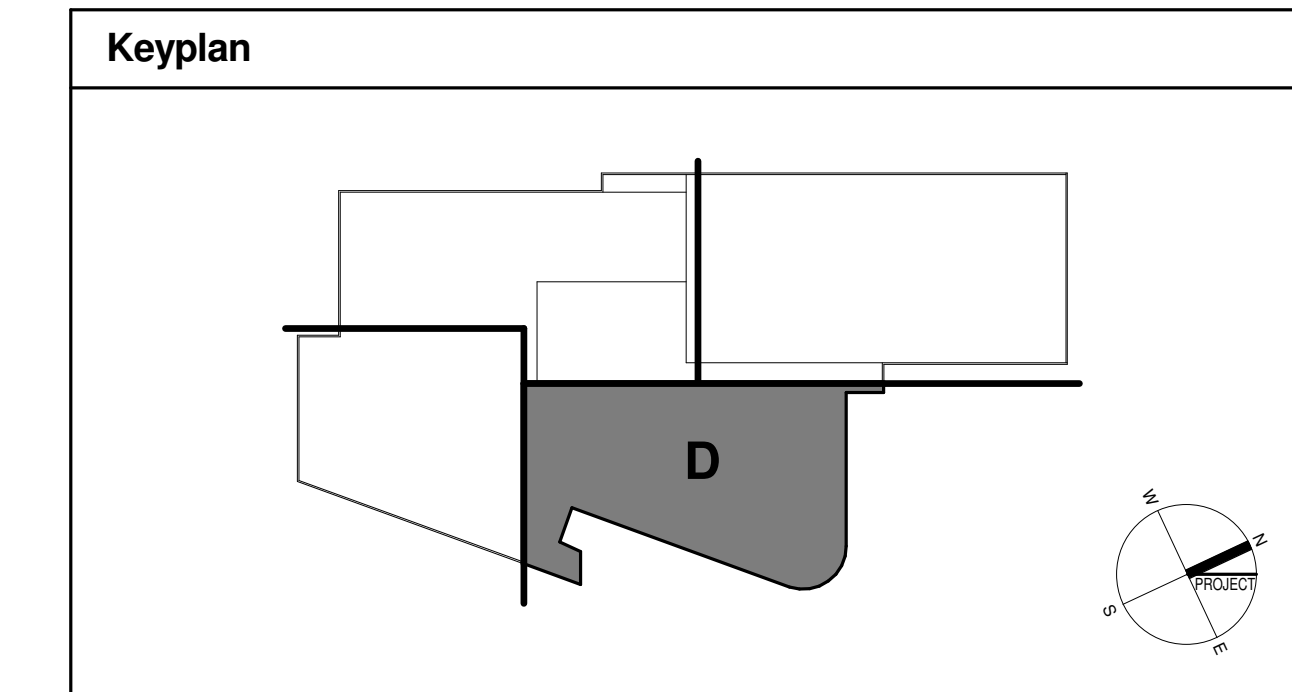
- CMU WALL REINFORCEMENT NOTES, U.N.O.:**
- REFER TO TYP. DETAILS FOR REINFORCEMENT REQUIREMENTS.
  - CONTRACTOR IS RESPONSIBLE FOR DETERMINING FINAL WALL HEIGHTS COORDINATE FINAL WALL HEIGHT WITH THE ARCHITECT.
- LEGENDS:**
- [Symbol] = ENTRY WAY SLAB - 3" DEPRESSION
  - [Symbol] = THICKSET FLOOR SLAB - 2" DEPRESSION
  - [Symbol] = 4" HOUSE KEEPING PAD
  - [Symbol] = SPORTS CLUB / GYM FLOOR SLAB - 2 1/2" DEPRESSION
  - [Symbol] = LOAD BEARING CMU WALL
  - [Symbol] = NON-LOAD BEARING CMU WALL
- CMU LINTEL TYPES:**
- "L1" - 8" CMU; (1) 8" DEEP BOND BEAM w/(2) #5 CONTINUOUS.
  - "L2" - 8" CMU; (2) 8" DEEP, STACKED BOND BEAMS w/(2) #5 CONTINUOUS IN EACH.
  - "L3" - 8" CMU; (1) 8" DEEP BOND BEAM w/(2) #5 CONTINUOUS & L6x6x3/8 GALV. BRICK ANGLE

**LEGEND:**

- [Symbol] = CLOUDED ITEMS WHERE CHANGED PER ADDENDUM
- [Symbol] = ADDENDUM NUMBER

**DISCLAIMER NOTE:**

THIS SET OF CONSTRUCTION DRAWINGS HAS BEEN UPDATED TO INCLUDE ANY CHANGES ISSUED THROUGH ADDENDUM OR OTHER MEANS. EVERY EFFORT HAS BEEN TAKEN TO INCLUDE ALL CHANGES TO DATE. THE CONTRACTOR IS STILL RESPONSIBLE FOR PROVIDING ANY ITEMS THAT WERE SHOWN AS PART OF THE ORIGINAL BID SET THAT MAY HAVE BEEN OVERLOOKED AND NOT INCLUDED IN THIS SET.



SLAB ON GRADE PLAN - AREA-D  
SCALE: 1/8" = 1'-0"

© Cannon Design 2010  
This drawing is the property of Cannon Design and shall not be reproduced or utilized in any form without prior written authorization by Cannon Design.