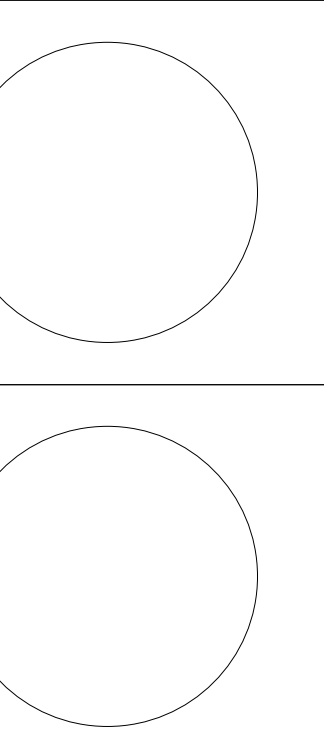
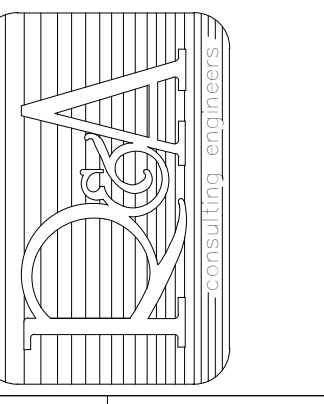


University of Louisville - Student Recreation Center (Phase #4 - Construction Set) Louisville, Ky



RANGASWAMY AND ASSOC., INC.
 Suite 402, The Landmark Building
 Louisville, Kentucky 40202
 Fax: (502) 588-2240; www.rangaswamy.com



Omni ARCHITECTS
 212 North Upper Street
 Lexington, Kentucky 40507-1001
 p 859.252.6664 f 859.253.2358
 www.omniarchitects.com

CANNONDESIGN

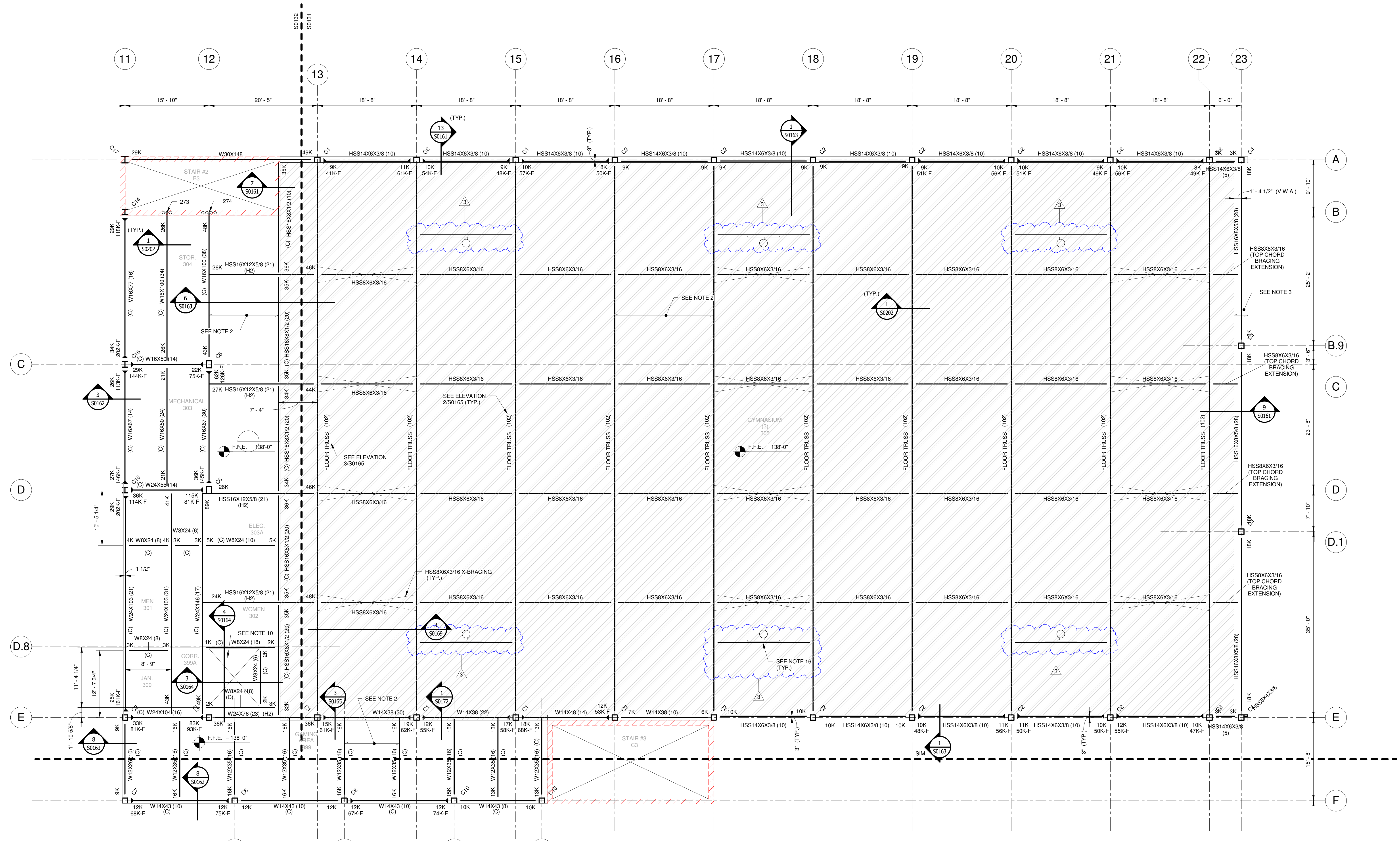
UNIVERSITY OF LOUISVILLE



#	Revision Date
3	Mar 05, 2012
4	Mar 12, 2012

Drawing Name: LEVEL 02 FLOOR FRAMING PLAN - AREA-A
 U of L Project Number: Omni - 1105.00 Cannon - 08667.00
 Project Number: April 16, 2012
 Date: VPP Checked By: ANTHONY

S0131



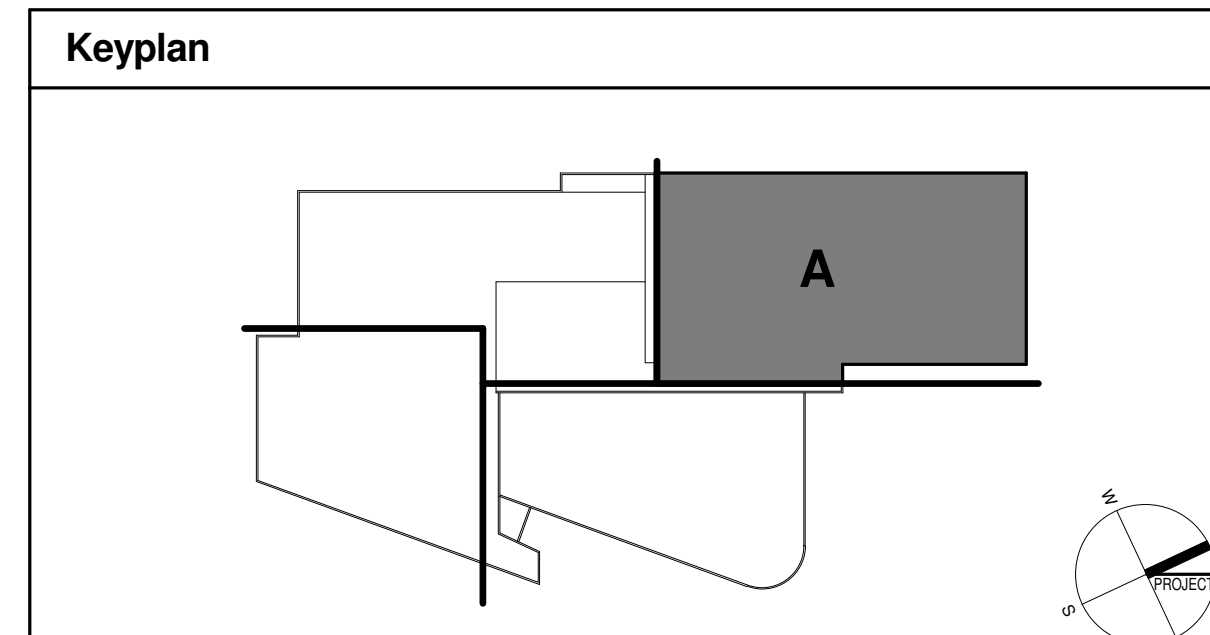
LEVEL 02 FLOOR FRAMING PLAN - AREA-A
 SCALE: 1/8" = 1'-0"

- LEVEL-02 FLOOR FRAMING NOTES:**
- ESTABLISHED ELEVATIONS:
 F.F.E. 138'-0" UNO
 TOP OF BEAM EL. 135'-11" UNO
 ELEVATIONS ARE TO BE AS INDICATED ABOVE, UNLESS OTHERWISE NOTED +/- INCHES ABOVE/BELOW.
 - FLOOR SLAB [10" 12" TOTAL DEPTH] 3" MIN. LIGHT WEIGHT CONCRETE w/W.F. 6# - W14X43 ON EDCP750A, 1618 GAGE GALVANIZED EPIC WIDEK BY EPIC METAL CORPORATION.
 - FLOOR SLAB [13" TOTAL DEPTH] 5 1/2" MIN. LIGHT WEIGHT CONCRETE w/W.F. 6# - W2.5XW2.5 ON EDCP750A, 1618 GAGE GALVANIZED EPIC WIDEK BY EPIC METAL CORPORATION. SEE SECTION S30161.
 - REFER TO ARCHITECTURAL MECHANICAL PLUMBING AND ELECTRICAL DRAWINGS FOR HOUSEKEEPING AND/OR EQUIPMENT PADS, CURB SIZES AND LOCATIONS. SIZES AND LOCATIONS OF PAD SHALL BE VERIFIED WITH APPROVED MANUFACTURER'S EQUIPMENT SHOP DRAWING PRIOR TO CONSTRUCTION.
 - ALL FLOOR DRAINS MAY NOT BE SHOWN. COORDINATE EXACT LOCATIONS AND QUANTITIES WITH THE PLUMBING DRAWING. PROVIDE POSITIVE SLOPES (WARPS) IN T.O. FLOOR SLAB IN ORDER TO PROVIDE REQUIRED DRAINAGE. COORDINATE FLOOR FINISHES WITH THE ARCHITECT.
 - ALL BEAMS HAVE 1 ROW OF STUDS (UNO).
 NUMBER OF STUDS PER BEAM DENOTED THUS ()
 7. COLUMN CALLOUT DENOTED THUS:
 Cxx - COLUMN DESIGNATION [SEE COLUMN SCHEDULE]

- PROVIDE #4@12" o.c. TOP TRANSVERSE, OVER ALL BEAMS W/#4@12" o.c. LONGIT. (TYP.) SEE TYPICAL COMPOSITE SLAB REINF. DETAIL (10/S0208).
- REFER TO ARCHITECTURAL DRAWINGS AND MEP DRAWINGS FOR SLAB OPENINGS AND PENETRATIONS.
- REFER TO ARCHITECTURAL DRAWINGS FOR STAIR DIMENSION AND CONSTRUCTION, SLAB DEPRESSIONS AND ELEVATOR OPENINGS.
- SEE STRUCTURAL LINTEL ELEVATION SHEETS FOR LINTEL BEAMS AND METAL PANEL FRAMING DETAILS.
- PROVIDE 1/4" THICK BENT PLATE OR 1/4" THICK ANGLE FOR ALL DECK EDGE FRAMING IF THE CANT. LENGTH IS LESS THAN OR EQUAL TO 1'-0". FOR COMPOSITE DECK EDGE DETAIL SEE S30202.
- PROVIDE ADD'L REINF. (2) #5 BENEATH NON-LOAD BEARING CMU WALLS FOUNDED ON FLOOR SLAB.
- PROVIDE SLIP CONNECTION PER DETAIL 2/S0200 FOR BEAMS BEARING ON MASONRY.
- COORDINATE WITH ARCH. FOR SLAB EDGE / BOUNDARY DETAILS.
- REFER DETAIL S50180 FOR BASKETBALL GOAL SUPPORT. REFER DETAIL S50180 FOR BASKETBALL GOAL SUPPORT SIMILAR LOCATION AT HIGH ROOF FRAMING PLAN 1/S0141.

- LEGENDS:**
- 12" REINFORCED CMU w/2) #6 IN EACH CORE
 - 12" REINFORCED CMU w/2) #7 IN EACH CORE
 - LOAD BEARING CMU WALL AND/OR EXTERIOR CMU WALL ABOVE
 - 252 = ADDITIONAL VERTICAL CMU REINF. REQUIRED (SEE TYPICAL DETAIL)
 - LOAD BEARING CMU WALL AND/OR EXTERIOR CMU WALL BELOW
 - STANDARD S.J.I. BRIDGING
 - INDICATES MOMENT CONNECTION BY OTHERS.
 - INDICATES CANTILEVER MOMENT CONNECTION BY OTHERS.
 - REFER TYPICAL DETAIL 14/S0200 FOR BEAM AND COLUMN CONNECTION (U.N.O.)
 - (A) = INDICATES TOP OF STEEL ELEVATION 114'-10"
 - (B) = INDICATES TOP OF STEEL ELEVATION 115'-3 7/8"
 - (C) = INDICATES TOP OF STEEL ELEVATION 137'-1 1/2"
 - (D) = INDICATES TOP OF STEEL ELEVATION 115'-4 3/4"
 - (E) = INDICATES TOP OF STEEL ELEVATION 113'-4 3/8"
 - (F) = INDICATES W7X96.5 ABOVE BEAM, T.O.S. EL. 115'-5 3/4"
 - (H1) = INDICATES HSS3X3X1/4 ABOVE ROOF BEAM, T.O.S. EL. VARIES, SEE PLAN
 - (H2) = INDICATES HSS5X2 1/2X3/16 ABOVE FLOOR BEAM, T.O.S. EL. 137'-1 1/2"
 - (H3) = INDICATES HSS8X8X1/2 ABOVE ROOF BEAM, T.O.S. EL. VARIES, SEE PLAN
 - (H4) = INDICATES HSS10X10X1/2 ABOVE ROOF BEAM, T.O.S. EL. VARIES, SEE PLAN
 - AEROBICS STORAGE FLOOR SLAB - 7 3/4" DEPRESSION
 - AEROBICS FLOOR SLAB - 7 3/4" DEPRESSION
 - RACQUET BALL FLOOR SLAB - 1 7/8" DEPRESSION
 - GYM FLOOR SLAB - 2 1/2" DEPRESSION

DISCLAIMER NOTE:
 THIS SET OF CONSTRUCTION DRAWINGS HAS BEEN UPDATED TO INCLUDE ANY CHANGES ISSUED THROUGH ADDENDUM OR OTHER MEANS. EVERY EFFORT HAS BEEN TAKEN TO INCLUDE ALL CHANGES TO DATE. THE CONTRACTOR IS STILL RESPONSIBLE FOR PROVIDING ANY ITEMS THAT WERE SHOWN AS PART OF THE ORIGINAL BID SET THAT MAY HAVE BEEN OVERLOOKED AND NOT INCLUDED IN THIS SET.



© Cannon Design 2010
 16-04-2012 17:55:47
 This drawing is the property of Cannon Design and is not to be reproduced or utilized in any form without the written authorization of Cannon Design.