


# University of Louisville - Student Recreation Center (Phase #4 - Construction Set) Louisville, Ky

**Omni** ARCHITECTS

212 North Upper Street  
Lexington, Kentucky 40507-1001  
p 859.252.6864 f 859.253.2388  
www.omniarchitects.com

**CANNONDESIGN**

**UNIVERSITY OF LOUISVILLE**



**RANGASWAMY AND ASSOC., INC.**

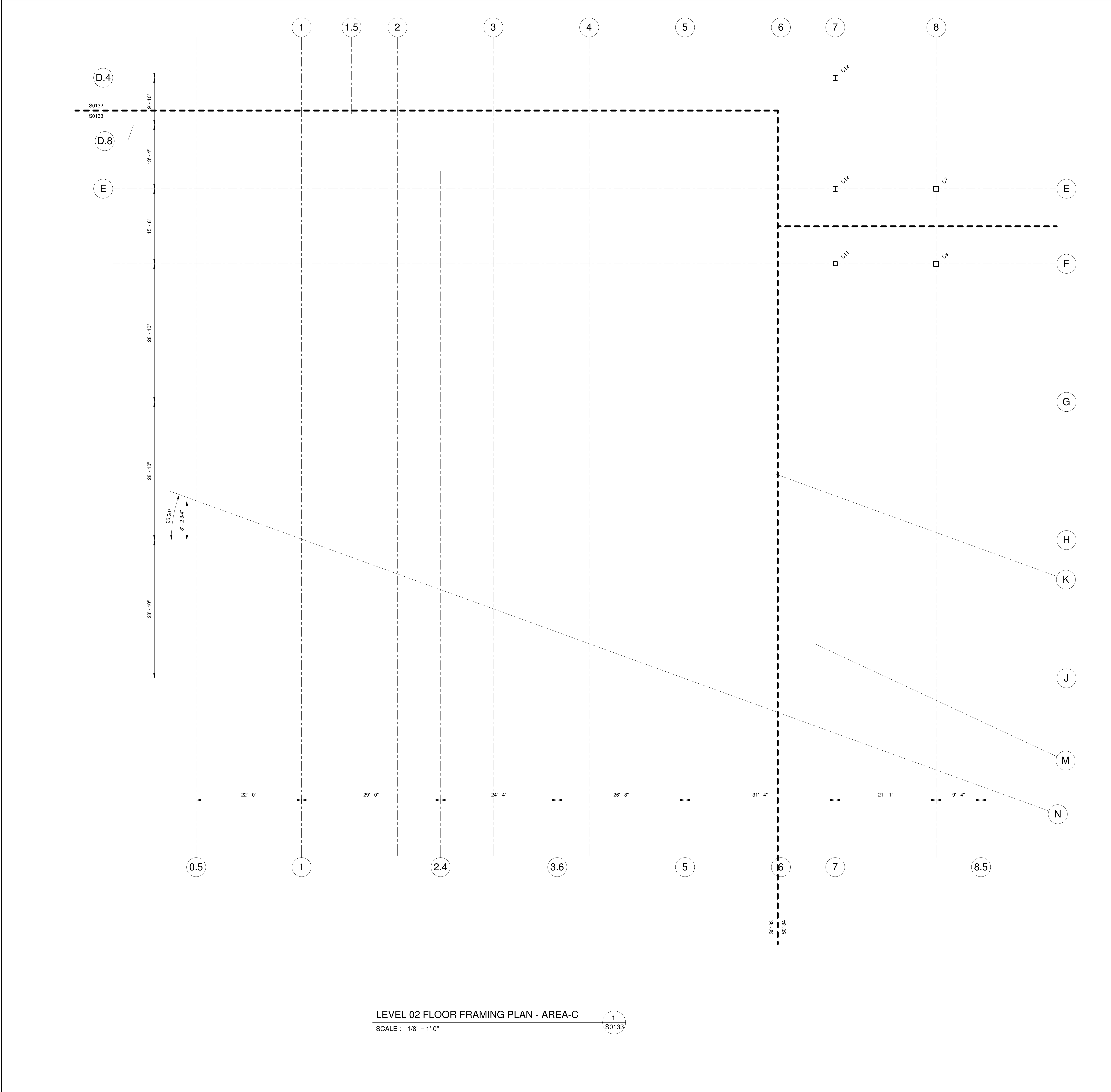
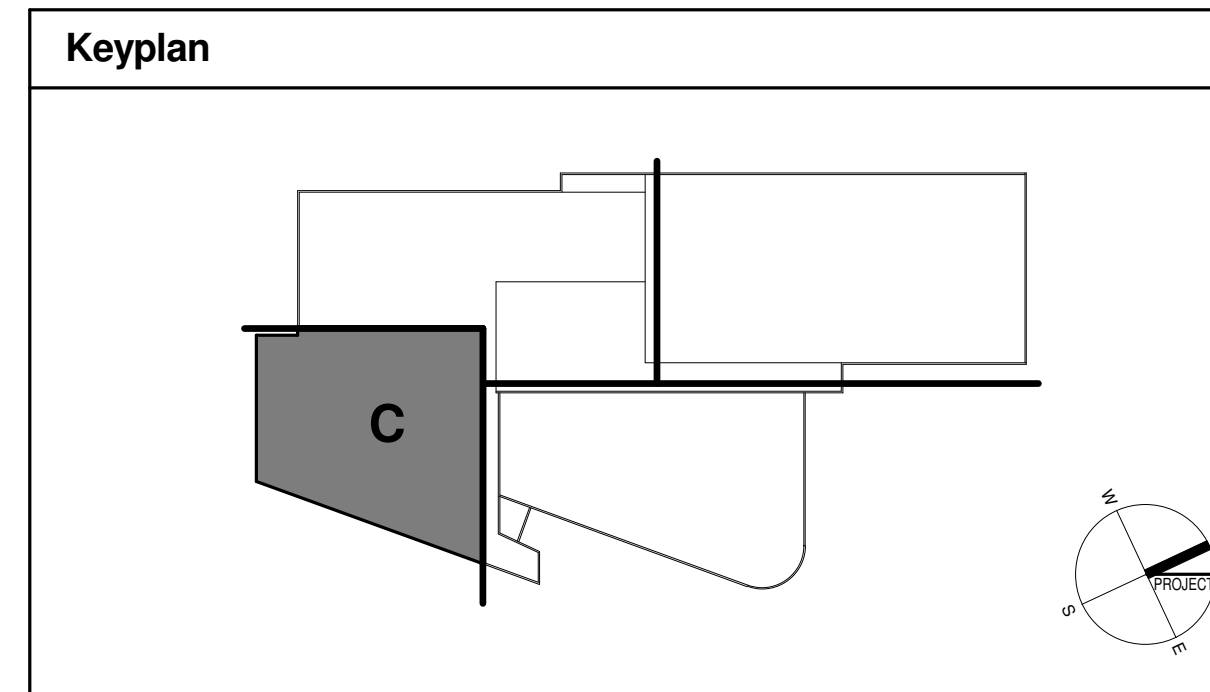
Suite 420, The Landmark Building  
Louisville, Kentucky 40202  
Fax: (606)598-2240; www.rangaswamy.com

212 North Upper Street  
Lexington, Kentucky 40507-1001  
p 859.252.6864 f 859.253.2388  
www.omniarchitects.com

- LEVEL 02 FLOOR FRAMING NOTES:**
- ESTABLISHED ELEVATIONS:  
F.F.E. 138'-0" UNO  
TOP OF BEAM EL. 136'-11" UNO  
ELEVATIONS ARE TO BE AS INDICATED ABOVE, UNLESS OTHERWISE NOTED +/- INCHES ABOVE/BELOW.
  - FLOOR SLAB [10 1/2" TOTAL DEPTH] 3" MIN. LIGHT WEIGHT CONCRETE W/W.F. 6x6 - W1.4XW1.4 ON EDCP750A, 16/18 GAGE GALVANIZED EPIC WIDECK BY EPIC METAL CORPORATION.
  - FLOOR SLAB [13" TOTAL DEPTH] 5 1/2" MIN. LIGHT WEIGHT CONCRETE W/W.F. 6x6 - W2.5XW2.5 ON EDCP750A, 16/18 GAGE GALVANIZED EPIC WIDECK BY EPIC METAL CORPORATION. SEE SECTION 9/S0161.
  - REFER TO ARCHITECTURAL, MECHANICAL, PLUMBING AND ELECTRICAL DRAWINGS FOR HOUSEKEEPING AND/OR EQUIPMENT PADS, CURB SIZES AND LOCATIONS. SIZES AND LOCATIONS OF PADS SHALL BE VERIFIED WITH APPROVED MANUFACTURER'S EQUIPMENT SHOP. DRAWING PRIOR TO CONSTRUCTION.
  - ALL FLOOR DRAINS MAY NOT BE SHOWN. COORDINATE EXACT LOCATIONS AND QUANTITIES WITH THE PLUMBING DRAWING. PROVIDE POSITIVE SLOPES (WARPS) IN TO FLOOR SLAB IN ORDER TO PROVIDE REQUIRED DRAINAGE. COORDINATE FLOOR FINISHES WITH THE ARCHITECT.
  - ALL BEAMS HAVE 1 ROW OF STUDS (UNO).  
NUMBER OF STUDS PER BEAM DENOTED THUS ( )
  - COLUMN CALLOUT DENOTED THUS:  
Cxx → COLUMN DESIGNATION (SEE COLUMN SCHEDULE)
  - PROVIDE #4@12" o.c. TOP TRANSVERSE OVER ALL BEAMS W/#4@12" o.c. LONGIT. (TYP.) SEE TYPICAL COMPOSITE SLAB REINF. DETAIL (10/S0208).
  - REFER TO ARCHITECTURAL DRAWINGS AND MEP DRAWINGS FOR SLAB OPENINGS AND PENETRATIONS.
  - REFER TO ARCHITECTURAL DRAWINGS FOR STAIR DIMENSION AND CONSTRUCTION, SLAB DEPRESSIONS AND ELEVATOR OPENINGS.
  - SEE STRUCTURAL LINTEL ELEVATION SHEETS FOR LINTEL BEAMS AND METAL PANEL FRAMING DETAILS.
  - PROVIDE 1/4" THICK BENT PLATE OR 1/4" THICK ANGLE FOR ALL DECK EDGE FRAMING, IF THE CANT. LENGTH IS LESS THAN OR EQUAL TO 1'-0". FOR COMPOSITE DECK EDGE DETAIL SEE 2/S0202.
  - PROVIDE ADD'L REINF. (2) #5 BENEATH NON-LOAD BEARING CMU WALLS FOUNDED ON FLOOR SLAB.
  - PROVIDE SLIP CONNECTION PER DETAIL 2/S0200 FOR BEAMS BEARING ON MASONRY.
  - COORDINATE WITH ARCH. FOR SLAB EDGE / BOUNDARY DETAILS.
  - REFER DETAIL 4/S0180 FOR BASKETBALL GOAL SUPPORT. REFER DETAIL 5/S0180 FOR BASKETBALL GOAL SUPPORT SIMILAR LOCATION AT HIGH ROOF FRAMING PLAN 1/S0141.

- LEGENDS:**
- = 12" REINFORCED CMU w/(2) #6 IN EACH CORE
  - = 12" REINFORCED CMU w/(2) #7 IN EACH CORE
  - = LOAD BEARING CMU WALL AND/OR EXTERIOR CMU WALL ABOVE
  - = ADDITIONAL VERTICAL CMU REINF. REQUIRED (SEE TYPICAL DETAIL)
  - = LOAD BEARING CMU WALL AND/OR EXTERIOR CMU WALL BELOW
  - = STANDARD S.J.I. BRIDGING
  - H- = INDICATES MOMENT CONNECTION BY OTHERS.
  - H- = INDICATES CANTILEVER MOMENT CONNECTION BY OTHERS.
  - ++ = REFER TYPICAL DETAIL 14/S0200 FOR BEAM AND COLUMN CONNECTION (U.N.C.)
  - (A) = INDICATES TOP OF STEEL ELEVATION 114'-10"
  - (B) = INDICATES TOP OF STEEL ELEVATION 115'-3 7/8"
  - (C) = INDICATES TOP OF STEEL ELEVATION 137'-1 1/2"
  - (D) = INDICATES TOP OF STEEL ELEVATION 115'-1 3/4"
  - (E) = INDICATES TOP OF STEEL ELEVATION 113'-4 3/8"
  - (T) = INDICATES W7X96.5 ABOVE BEAM, T.O.S. EL. 115'-5 3/4"
  - (H1) = INDICATES HSS3X3X14 ABOVE ROOF BEAM, T.O.S. EL. VARIES, SEE PLAN
  - (H2) = INDICATES HSS5X2 1/2X316 ABOVE FLOOR BEAM, T.O.S. EL. 137'-1 1/2"
  - (H3) = INDICATES HSS8X8X12 ABOVE ROOF BEAM, T.O.S. EL. VARIES, SEE PLAN
  - (H4) = INDICATES HSS10X10X12 ABOVE ROOF BEAM, T.O.S. EL. VARIES, SEE PLAN
  - [Hatched Box] = AEROBICS STORAGE FLOOR SLAB - 7 3/4" DEPRESSION
  - [Hatched Box] = AEROBICS FLOOR SLAB - 7 3/4" DEPRESSION
  - [Hatched Box] = RACQUET BALL FLOOR SLAB - 1 7/8" DEPRESSION
  - [Hatched Box] = GYM FLOOR SLAB - 2 1/2" DEPRESSION
  - [Clouded Box] = CLOUDED ITEMS WHERE CHANGED PER ADDENDUM
  - [Clouded Box] = ADDENDUM NUMBER

**DISCLAIMER NOTE:**  
THIS SET OF CONSTRUCTION DRAWINGS HAS BEEN UPDATED TO INCLUDE ANY CHANGES ISSUED THROUGH ADDENDUM OR OTHER MEANS. EVERY EFFORT HAS BEEN TAKEN TO INCLUDE ALL CHANGES TO DATE. THE CONTRACTOR IS STILL RESPONSIBLE FOR PROVIDING ANY ITEMS THAT WERE SHOWN AS PART OF THE ORIGINAL BID SET THAT MAY HAVE BEEN OVERLOOKED AND NOT INCLUDED IN THIS SET.



LEVEL 02 FLOOR FRAMING PLAN - AREA-C  
SCALE: 1/8" = 1'-0"

© Cannon Design 2010  
All rights reserved. No part of this document may be reproduced or utilized in any form, without prior written authorization by The Cannon Corporation.  
16-04-2012 17:56:15

**S0133**

Revision Date	#	Revision
Mar 05, 2012	3	AREA-C
Mar 12, 2012	4	

Drawing Name: LEVEL 02 FLOOR FRAMING PLAN - AREA-C  
 U of L Project Number: Omni - 1105.00 Cannon - 08667.00  
 Project Number: Omni - 1105.00 Cannon - 08667.00  
 Date: April 16, 2012  
 Drawn By: VPP  
 Checked By: ANTHONY