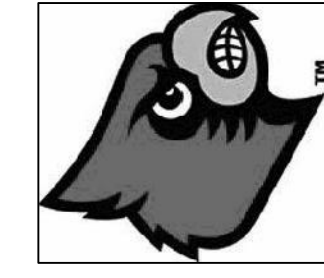


# University of Louisville - Student Recreation Center (Phase #4 - Construction Set) Louisville, Ky



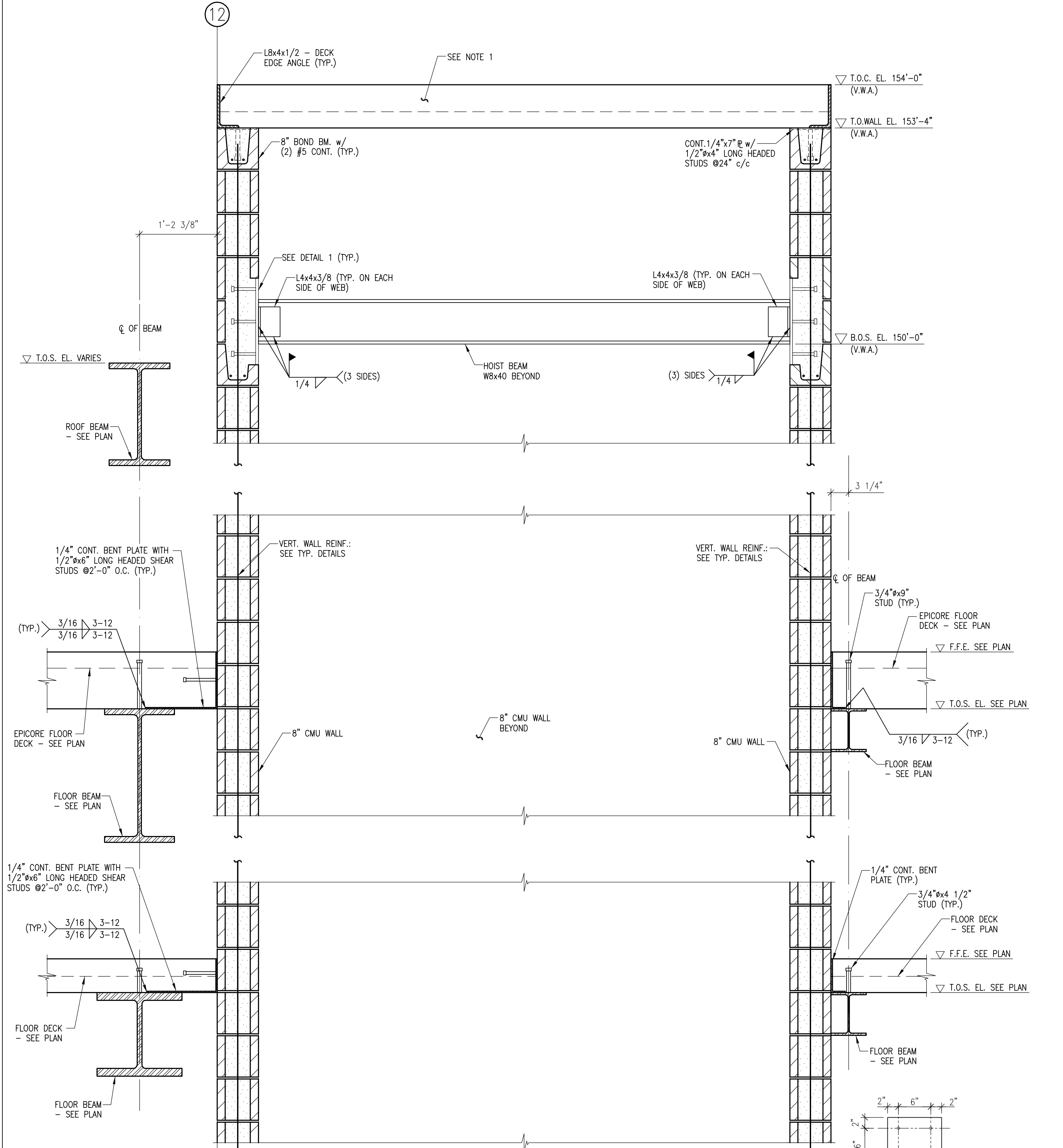
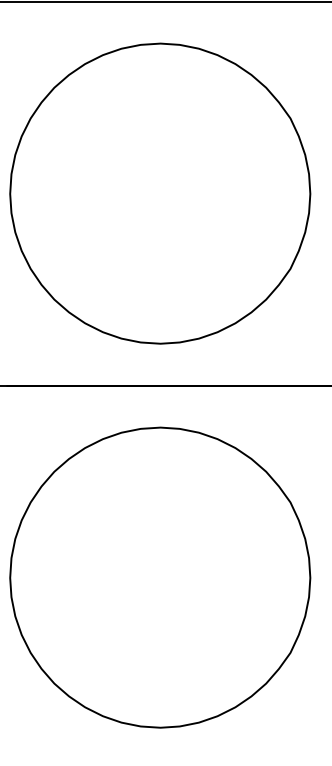
UNIVERSITY OF  
LOUISVILLE

**Omni**  
ARCHITECTS

212 North Upper Street  
Lexington, Kentucky 40507-1001  
P 859.252.6664 F 859.253.2358  
www.omniarchitects.com

**CANNONDESIGN**

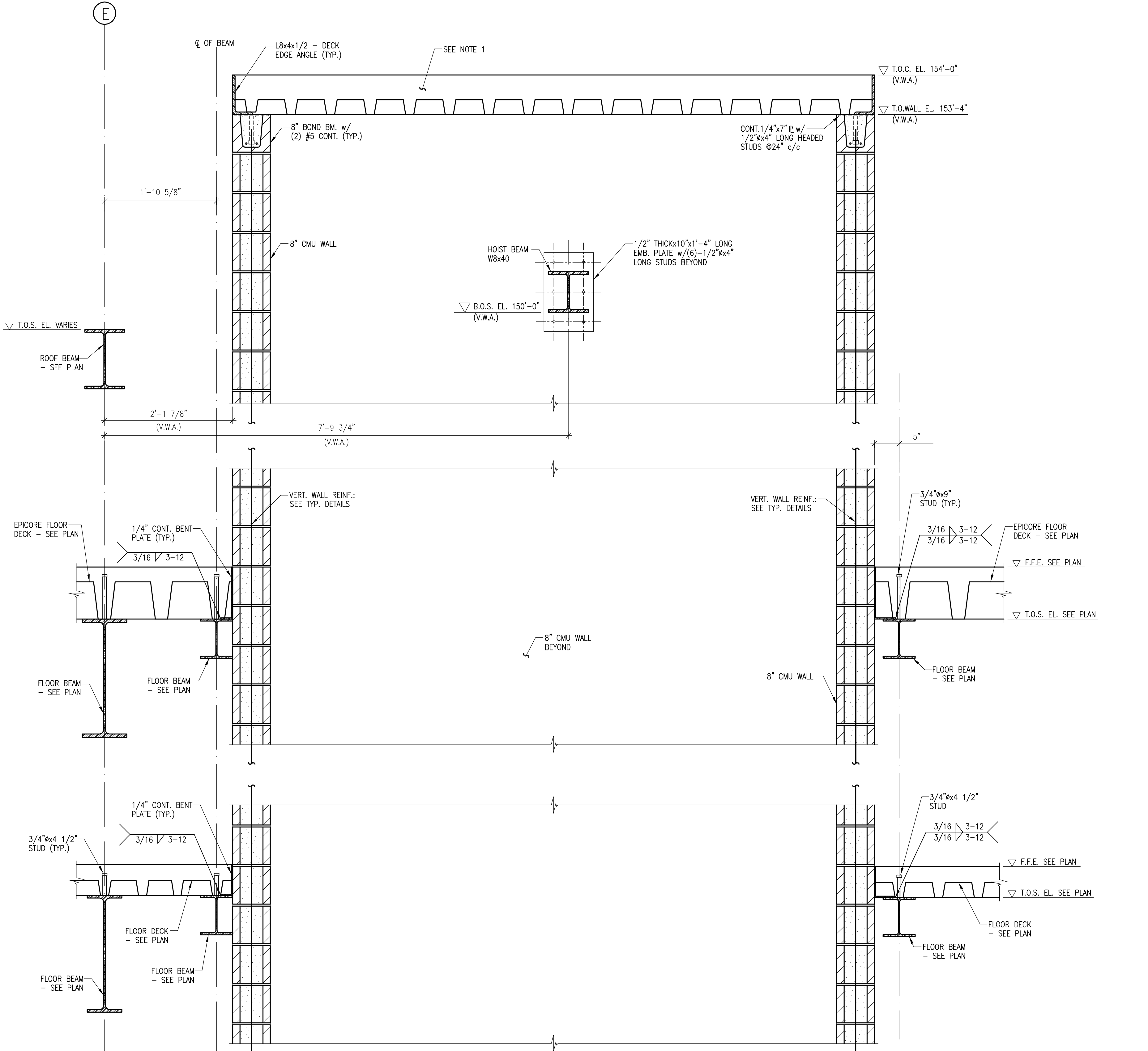
**RANGASWAMY AND ASSOC., INC.**  
Suite 420, The Landmark Building  
10200 W. LBJ Fwy.  
Alexandria, VA 22304  
Phone: (703) 836-2112  
Fax: (703) 836-2240 www.rangaswamy.com



**SECTION 3**  
SCALE: 1"=1'-0"  
S0164

**NOTE:**  
1. ELEVATOR ROOF SLAB (8" TOTAL DEPTH) 5" MIN. LIGHT WEIGHT CONCRETE w/ W.W.F. 6x6 - W2.5W2.5 ON 3C, 16 GAGE GALVANIZED METAL DECK BY VULCRAFT OR APPROVED EQUIVALENT

**DETAIL 1**  
1/2" THICK 10"x1"-4" LONG EMB. PLATE w/ (6)-1/2"x4" LONG STUDS



**SECTION 4**  
SCALE: 1"=1'-0"  
S0164

**NOTE:**  
1. ELEVATOR ROOF SLAB (8" TOTAL DEPTH) 5" MIN. LIGHT WEIGHT CONCRETE w/ W.W.F. 6x6 - W2.5W2.5 ON 3C, 16 GAGE GALVANIZED METAL DECK BY VULCRAFT OR APPROVED EQUIVALENT

**DISCLAIMER NOTE:**  
THIS SET OF CONSTRUCTION DRAWINGS HAS BEEN UPDATED TO INCLUDE ANY CHANGES ISSUED THROUGH ADDENDUM OR OTHER MEANS. EVERY EFFORT HAS BEEN TAKEN TO INCLUDE ALL CHANGES TO DATE. THE CONTRACTOR IS STILL RESPONSIBLE FOR PROVIDING ANY ITEMS THAT WERE SHOWN AS PART OF THE ORIGINAL BID SET THAT MAY HAVE BEEN OVERLOOKED AND NOT INCLUDED IN THIS SET.

#	Revision Date

Drawing Name:	SECTIONS AND DETAILS
U of L Project Number:	Omni - 1105.00 Cannon - 08687.00
Project Number:	Omni - 1105.00 Cannon - 08687.00
Date:	April 16, 2012
Drawn By:	ND
Checked By:	ANTHONY

**S0164**

INTENTIONALLY LEFT BLANK

INTENTIONALLY LEFT BLANK

© Cannon Design 2010. All rights reserved. This document may not be reproduced or used in any form, without prior written authorization by The Cannon Corporation.