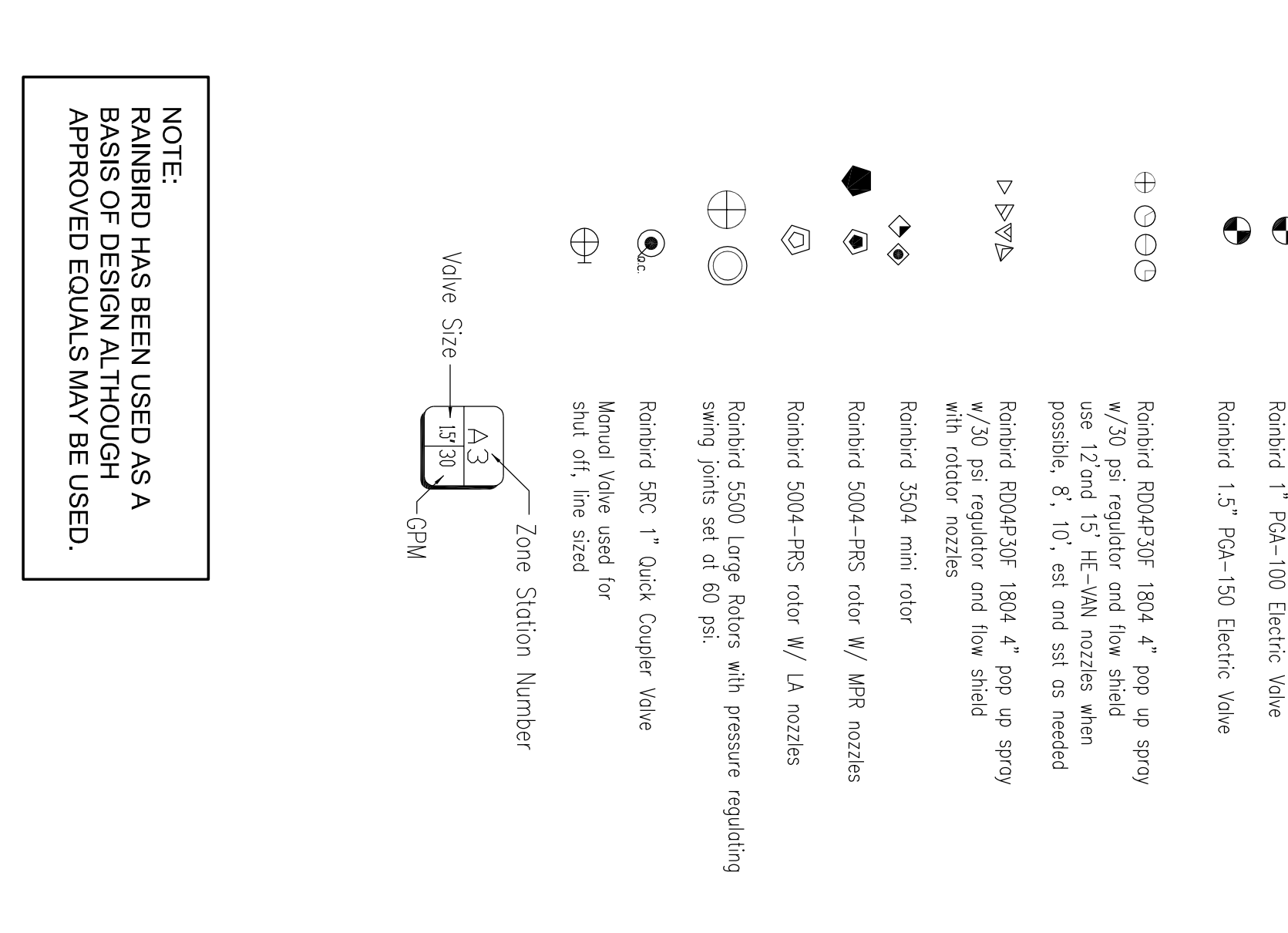
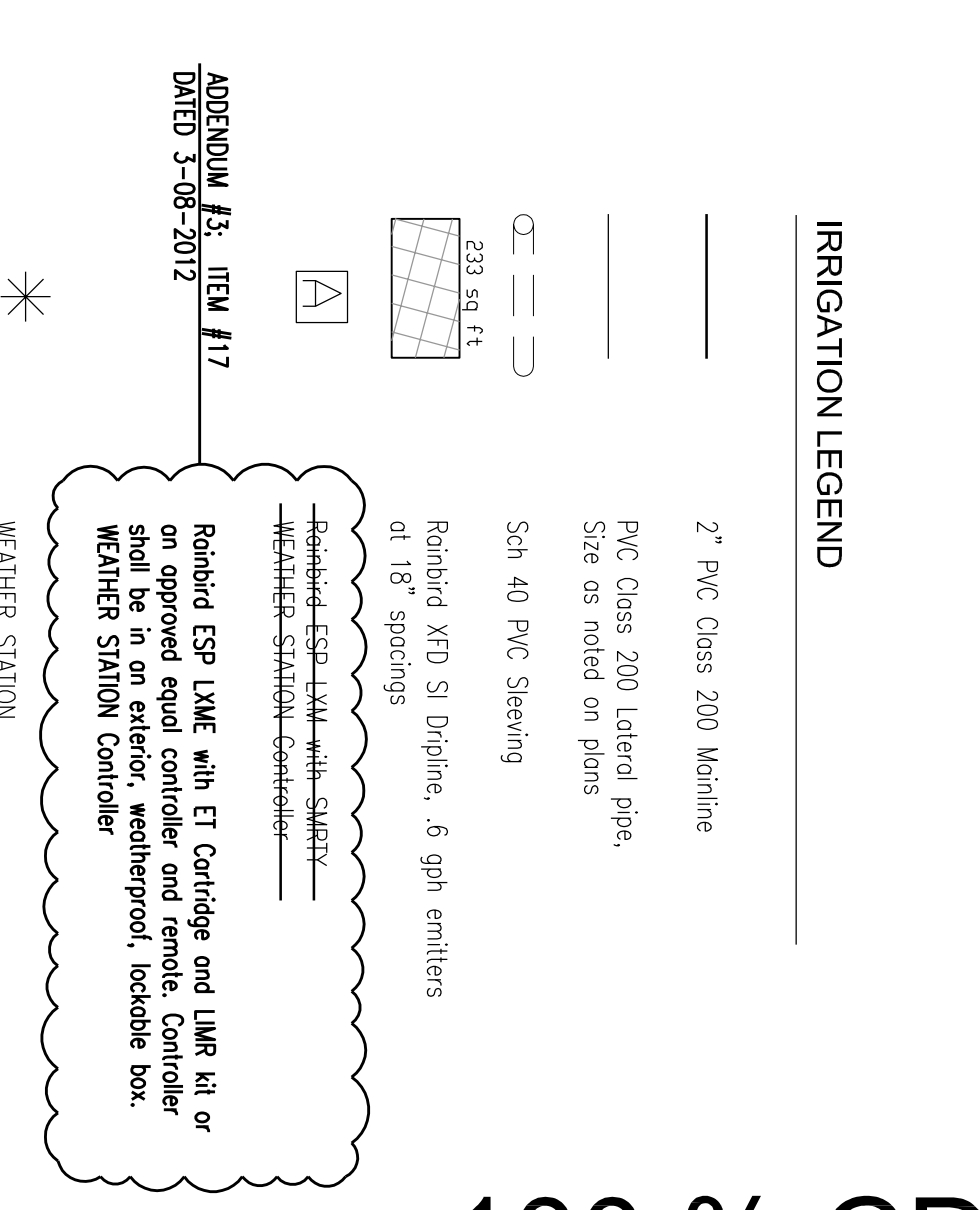
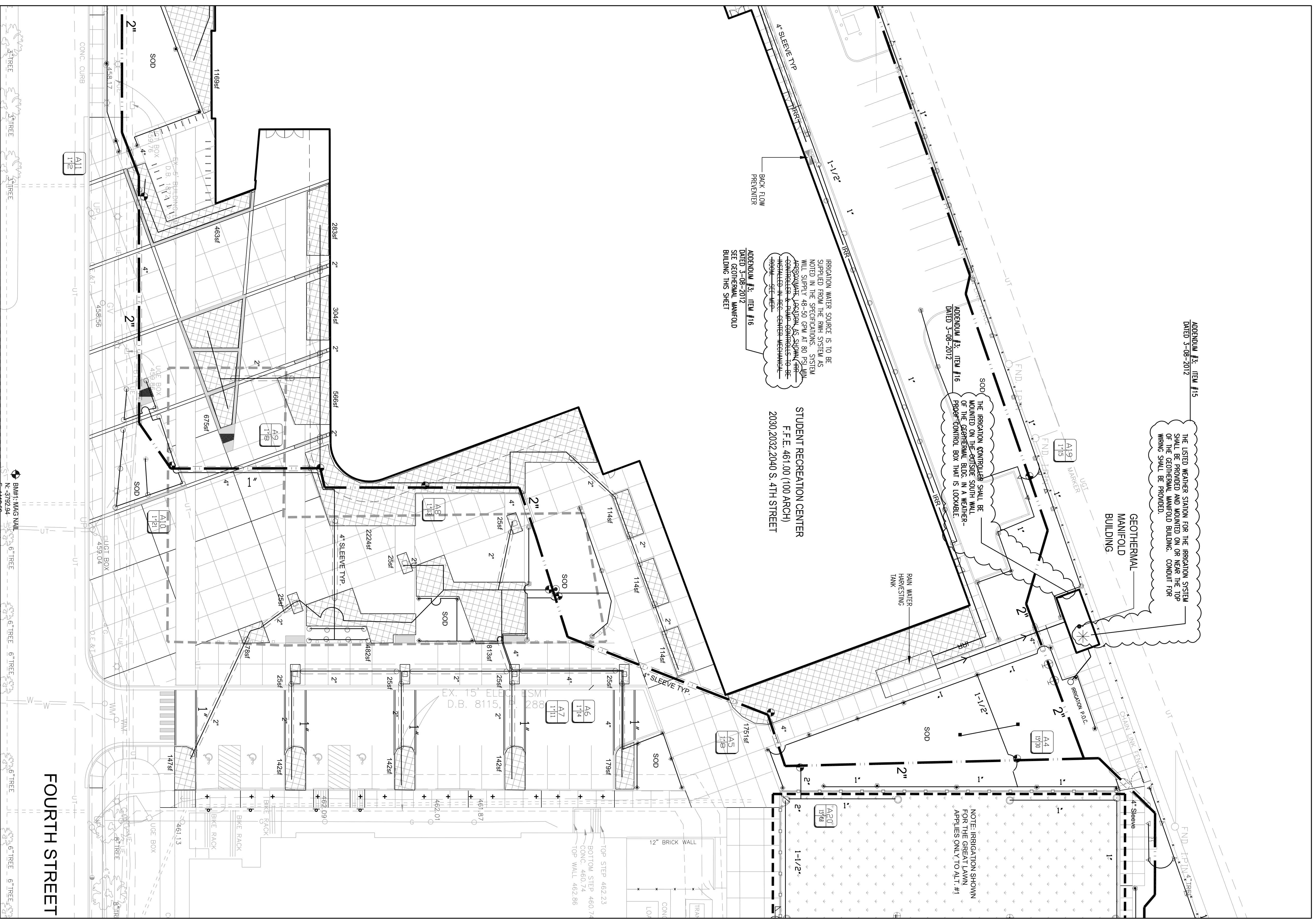


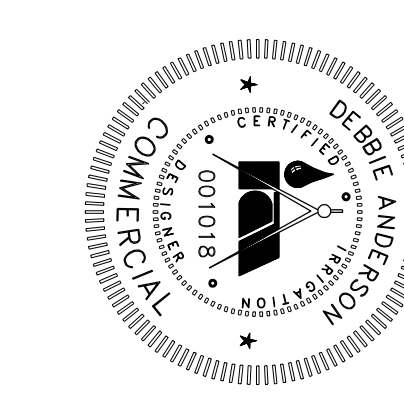
ITEM NO.	DESCRIPTION	QTY.	UNIT
1	1/2\"/>		

NOTES:
 1. FINISH GRADE SHALL BE MAINTAINED AT ALL TIMES.
 2. ALL MATERIALS SHALL BE AS SHOWN OR APPROVED BY THE ARCHITECT.
 3. ALL MATERIALS SHALL BE INSTALLED IN ACCORDANCE WITH THE MANUFACTURER'S INSTRUCTIONS.
 4. ALL MATERIALS SHALL BE INSTALLED IN ACCORDANCE WITH THE MANUFACTURER'S INSTRUCTIONS.
 5. ALL MATERIALS SHALL BE INSTALLED IN ACCORDANCE WITH THE MANUFACTURER'S INSTRUCTIONS.



SITE IRRIGATION PLAN
 SCALE: 1"=20'-0"

PURPOSE OF THESE DRAWINGS IS TO REFLECT ALL CHANGES AND CLARIFICATIONS MADE THRU PREVIOUSLY ISSUED ADDENDA. CONTRACTOR IS RESPONSIBLE FOR ADHERENCE TO IMPROVEMENTS REFLECTED IN THE CONTRACT BIDS AND SPECIFICATIONS.
 FOR LOCATION OF UNDERGROUND UTILITIES, CALL B.U.D. 1-502-286-6123 (2) WORKING DAYS IN ADVANCE OF DIGGING.



FOR LOCATION OF UNDERGROUND UTILITIES, CALL B.U.D. 1-502-286-6123 (2) WORKING DAYS IN ADVANCE OF DIGGING.

100 % CD's

Consolidated Addenda 3-11-12

University of Louisville - Student Recreational Facility (Bid Phase #4)

Louisville, Ky

Drawing Name / Description U of L Project Number: A&E Project Number: Date: Drawn By:	IRRIGATION PLAN # 1 Revision Date JANUARY, 2012 SDS Checked By:	 ENVIRONMENTS FULLY REALIZED CARMAN Landscape Architecture • Land Planning • Site Engineering 310 OLD EAST VINE STREET LEXINGTON, KY 40506 P: (859) 254-9803 F: (859) 255-8625	 212 North Upper Street Lexington, Kentucky 40507-1001 p 859.252.6664 f 859.252.6665 www.omniarchitects.com
---	--	--	---