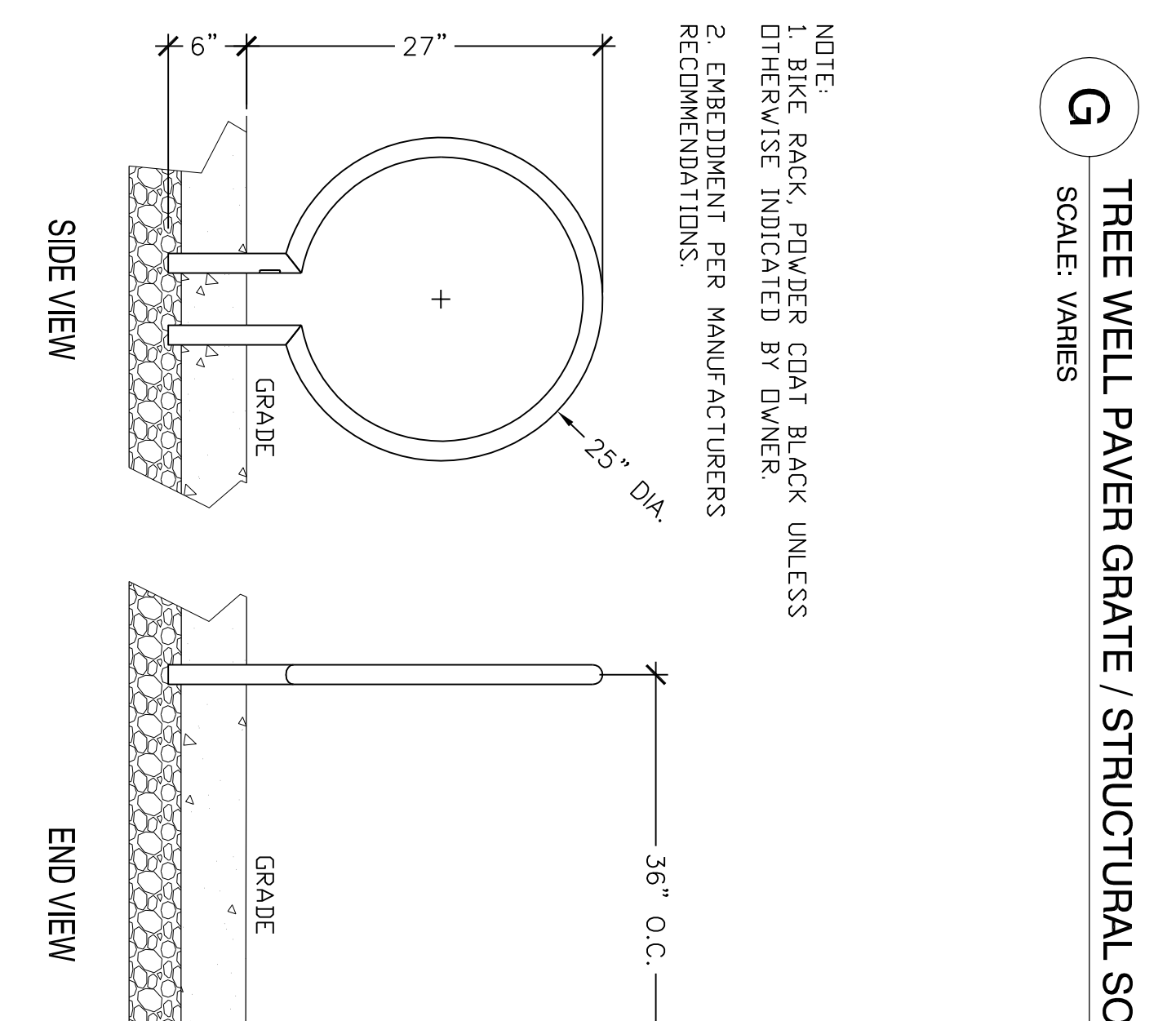
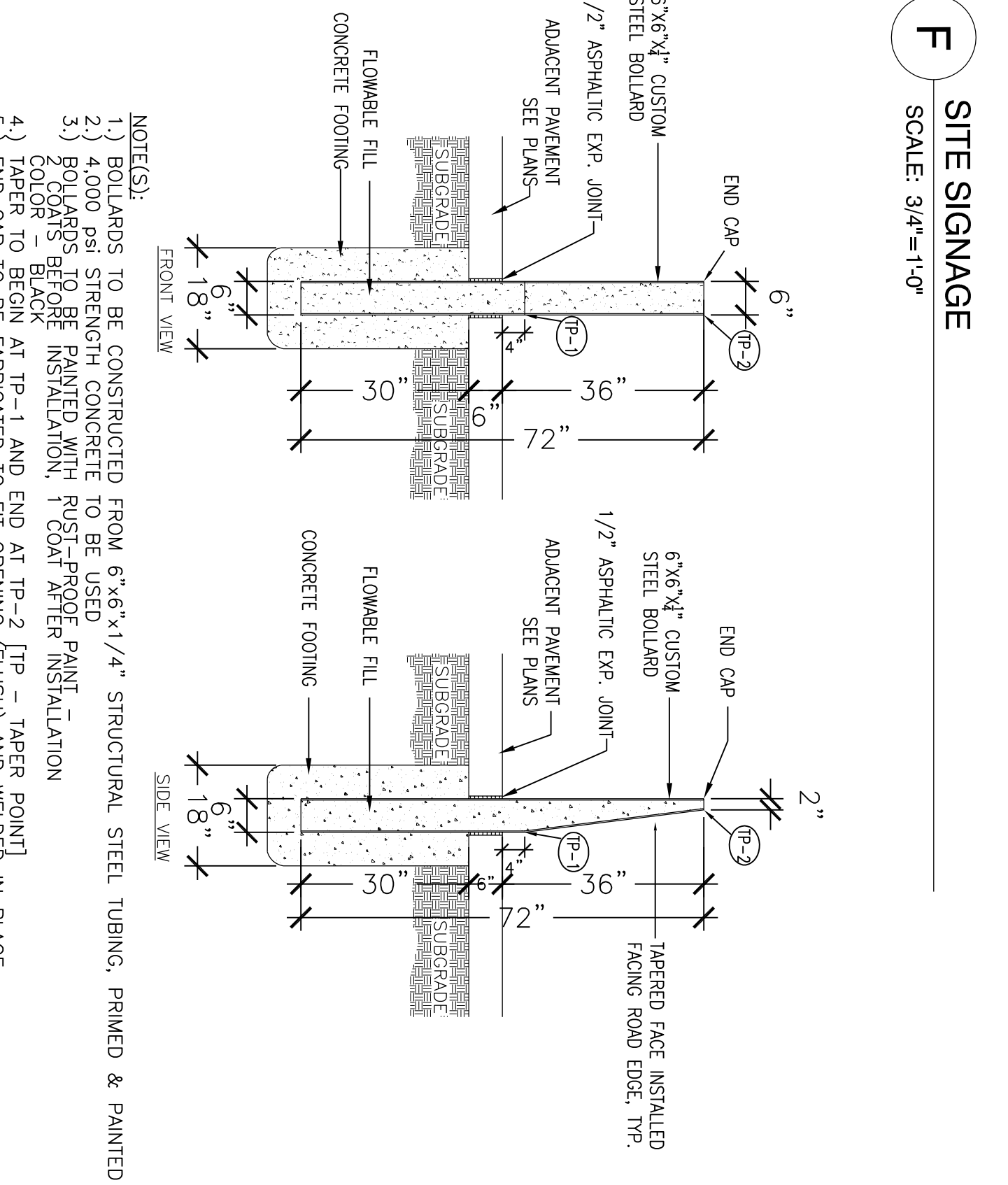
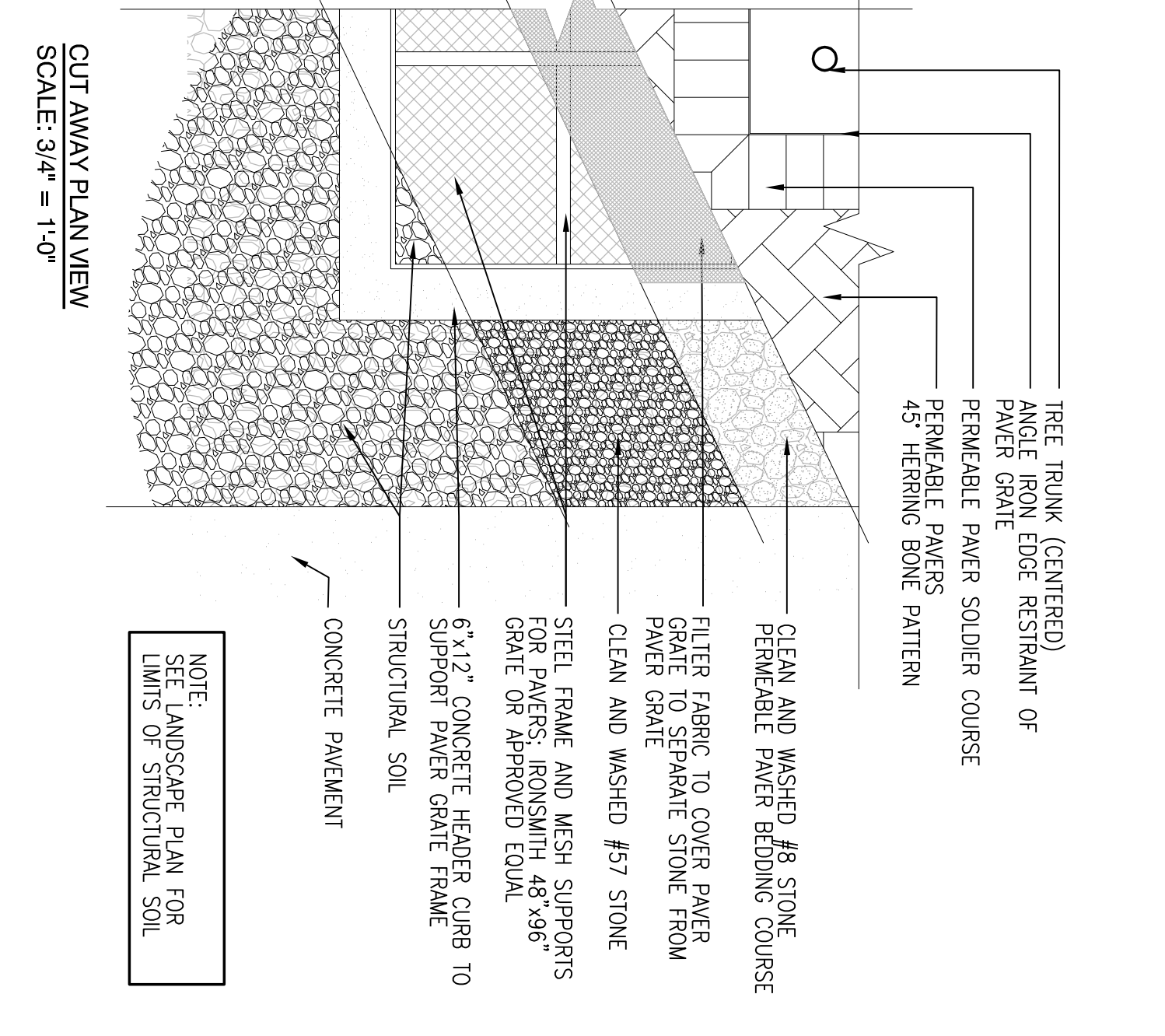
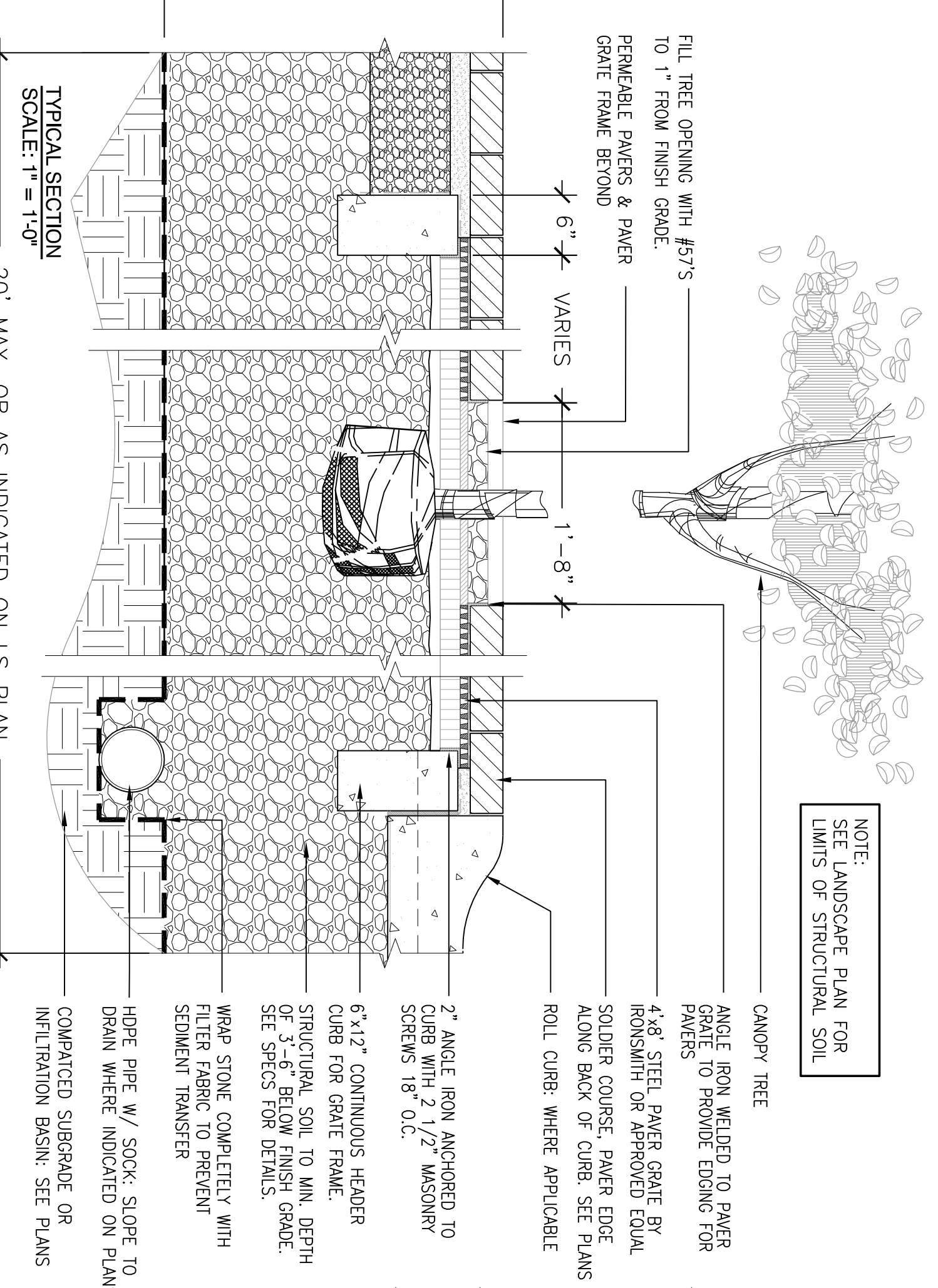
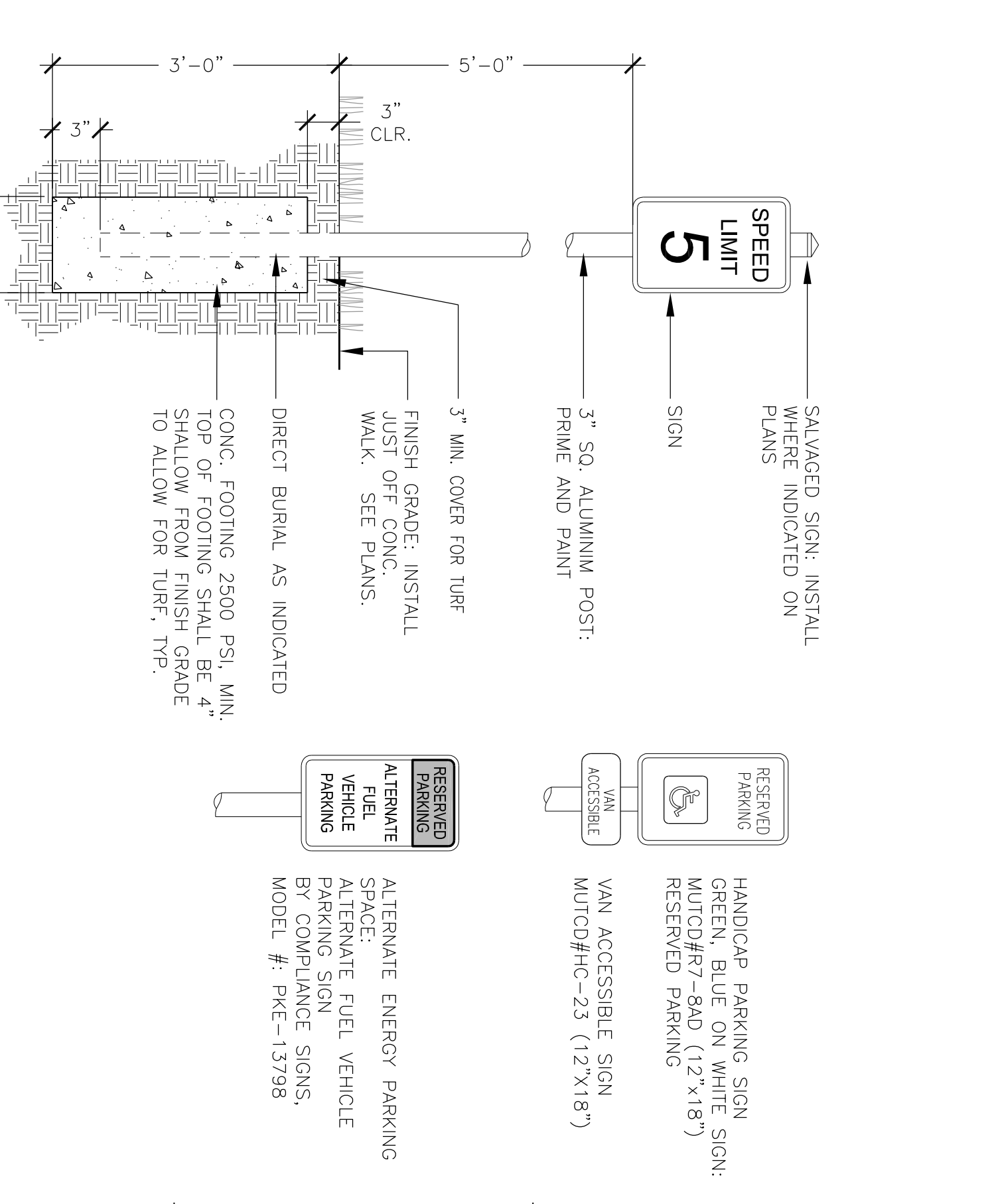
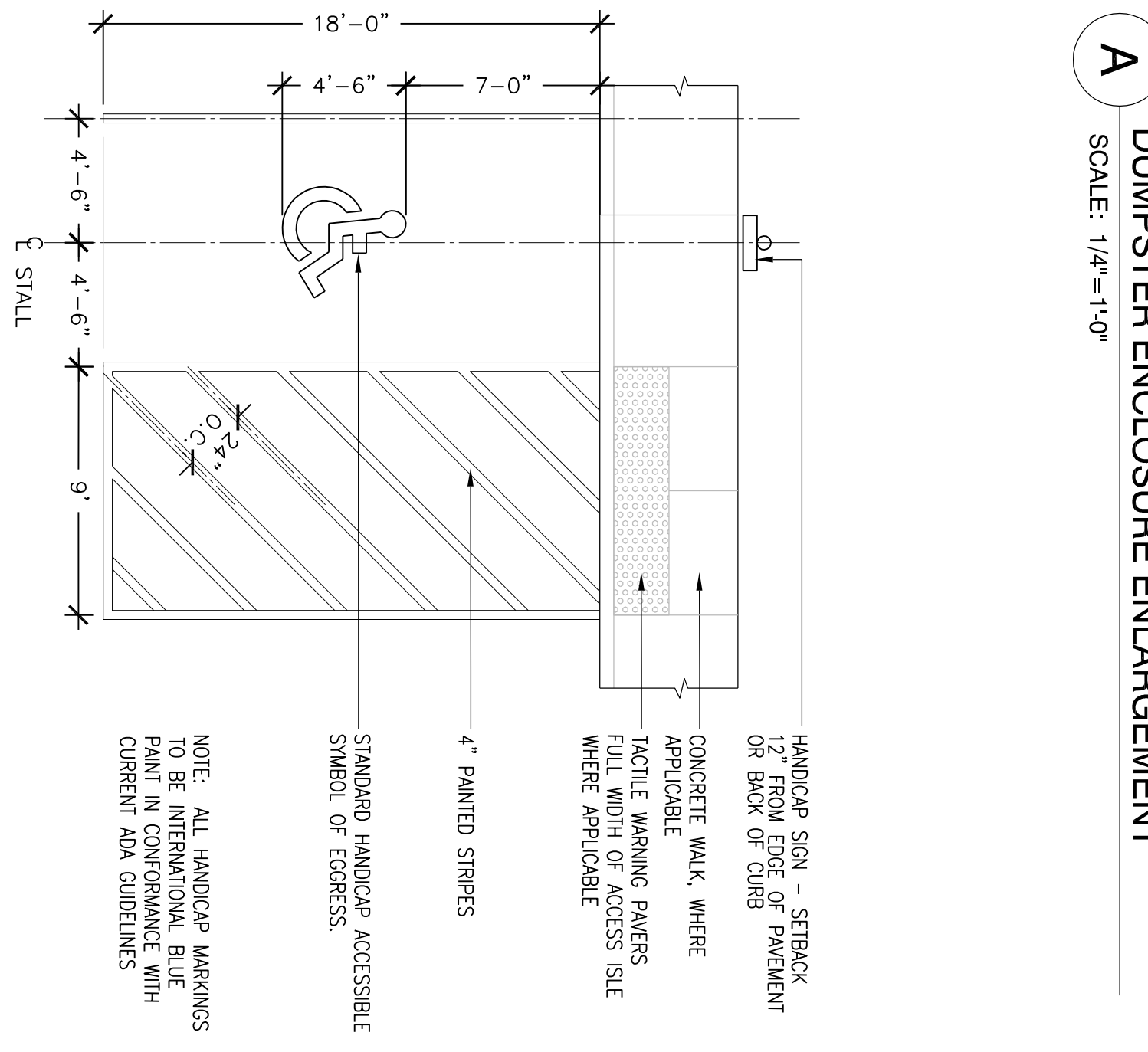
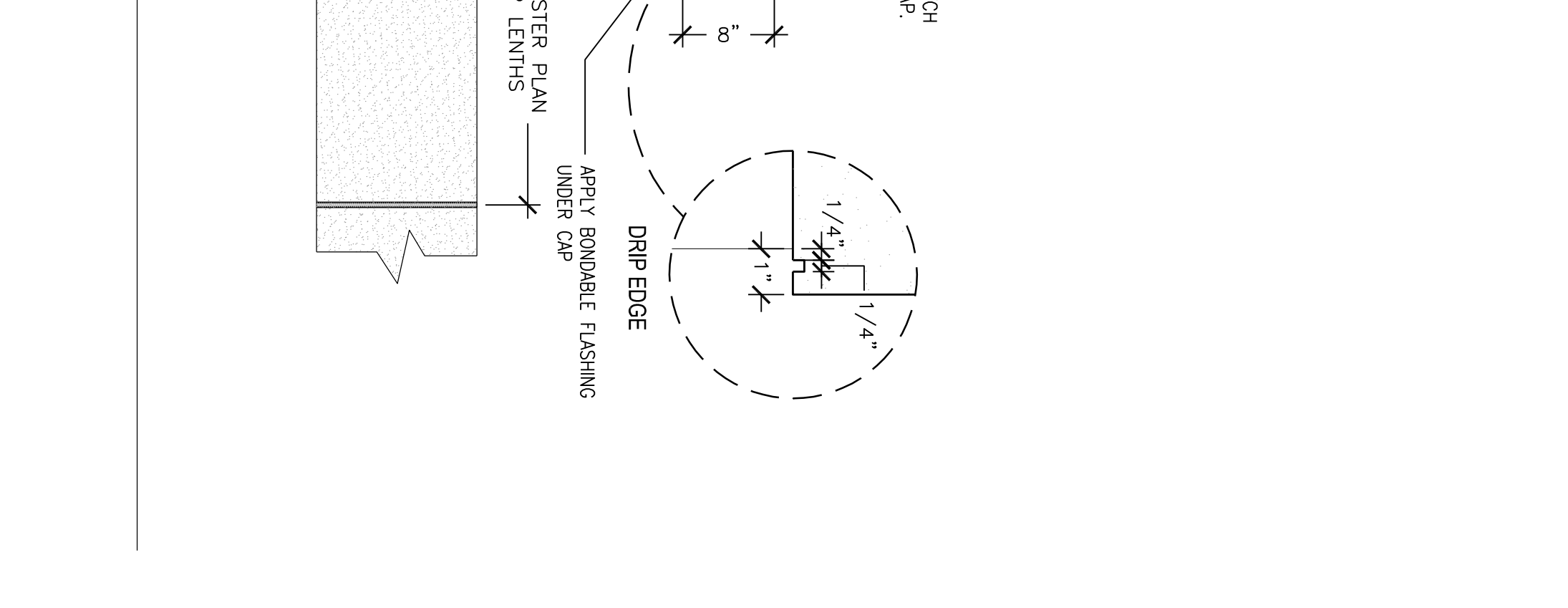
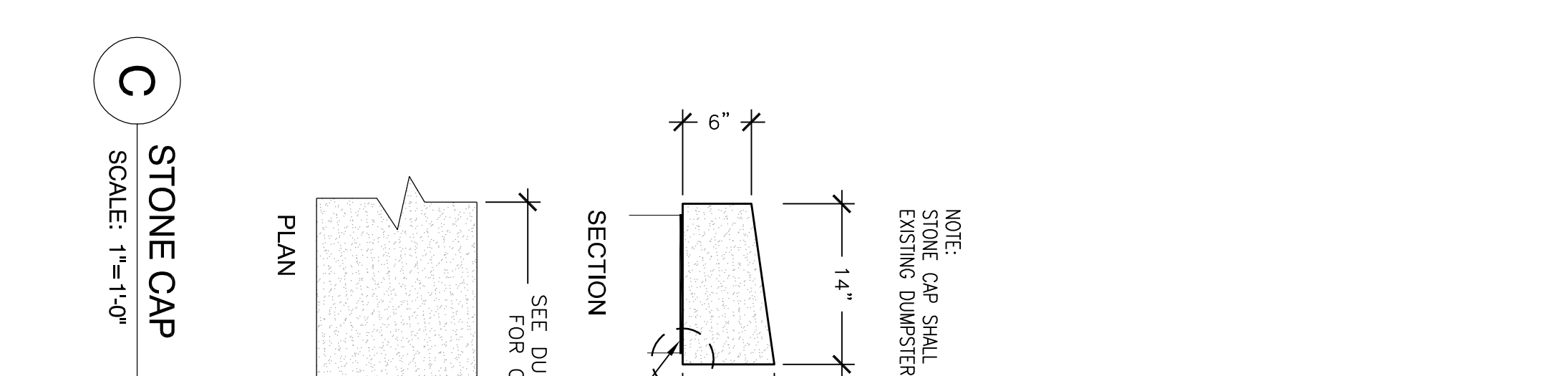
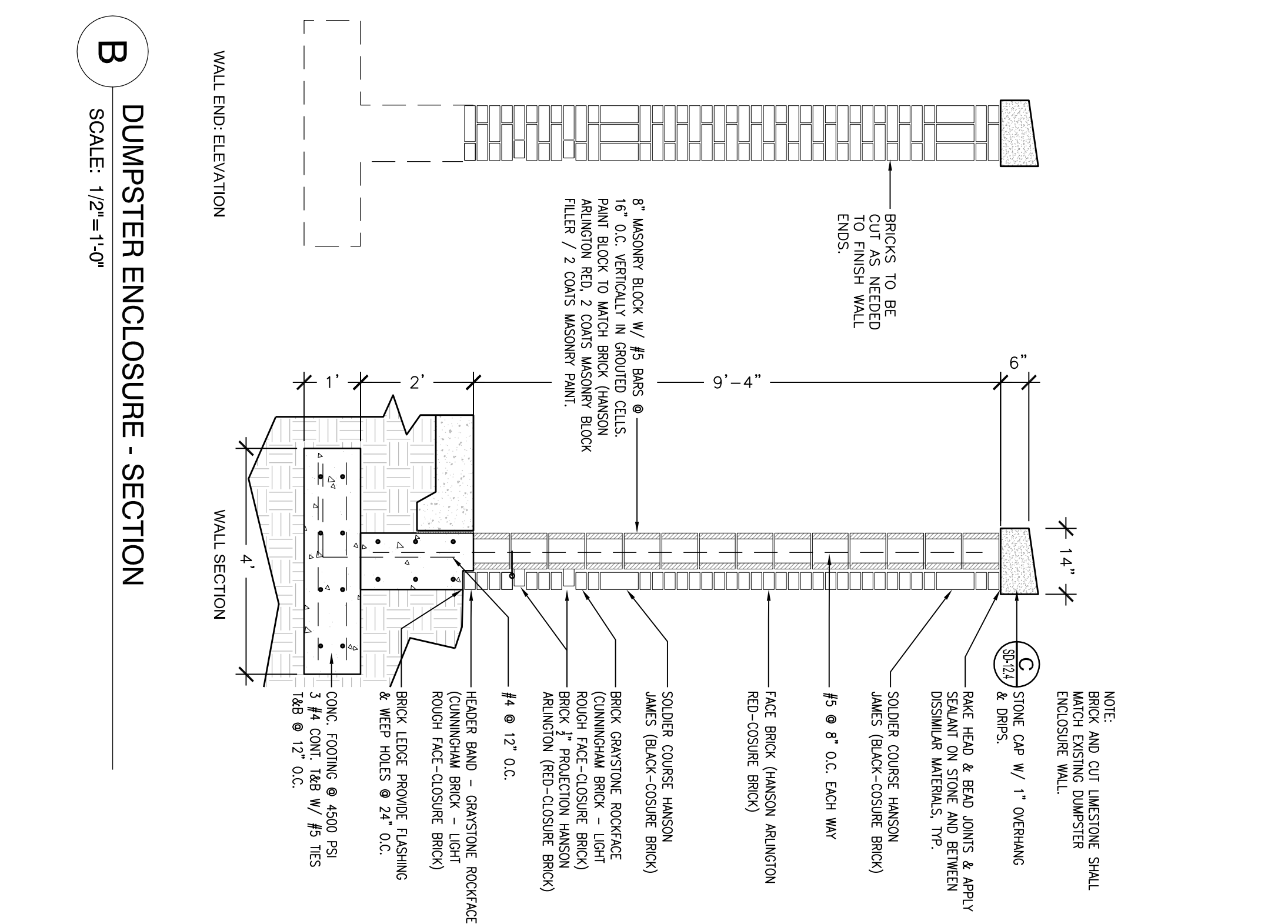
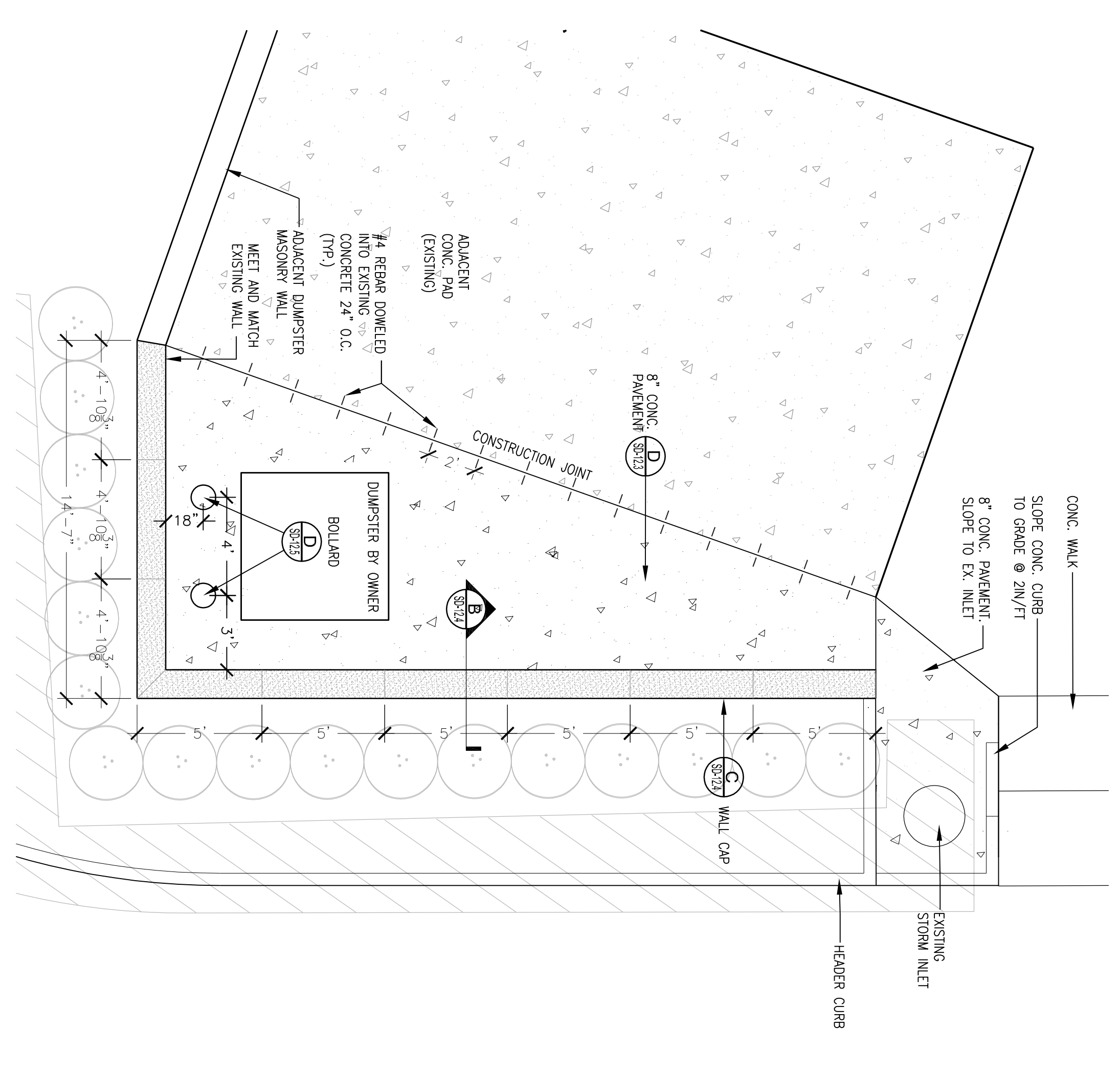


University of Louisville - Student Recreational Facility (Bid Phase #4 )

Drawing Name / Description	Site Details	#	Revision Date
U of L Project Number:		1	
A&E Project Number:		2	
Date:	JANUARY, 2012	3	
Drawn By:	SDS	4	
Checked By:	JLC / KLW	5	
		6	
		7	
		8	

**CARMAN**  
 LANDSCAPE ARCHITECTURE • LAND PLANNING • SITE ENGINEERING  
 310 OLD EAST VINE STREET LEXINGTON, KY 40506  
 P: (859) 254-9803 F: (859) 255-8625

**Omni ARCHITECTS**  
 212 North Upper Street  
 Lexington, Kentucky  
 40507-1001  
 P 859.252.6664  
 F 859.252.6661  
 www.omniarchitects.com



**NOTES:**  
 1) BOLLARDS TO BE CONSTRUCTED FROM 6"x6"x1/4" STRUCTURAL STEEL TUBING, PRIMED & PAINTED  
 2) BOLLARDS TO BE CONSTRUCTED FROM 6"x6"x1/4" STRUCTURAL STEEL TUBING, PRIMED & PAINTED  
 3) BOLLARDS TO BE CONSTRUCTED FROM 6"x6"x1/4" STRUCTURAL STEEL TUBING, PRIMED & PAINTED  
 4) TAPER TO BEGIN AT TP-1 AND END AT TP-2 (TP = TAPER POINT)  
 5) END CAP TO BE FABRICATED TO FIT OPENING (FLUSH) AND WELDED IN PLACE

**NOTES:**  
 1) BICYCLE RACK, POWDER COAT BLACK UNLESS OTHERWISE INDICATED BY OWNER  
 2) EXPEDIMENT PER MANUFACTURERS RECOMMENDATIONS.  
 3) TREE TRUNK (CENTERED) ANGLE IRON EDGE RESTRAINT OF PERMEABLE PAVES SOLDIER COURSE  
 4) 4"x6" STEEL PAYER GRATE BY ROUNSHOFF OR APPROVED EQUAL ALONG BACK OF CURB. SEE PLANS FOR ROLL CURB WHERE APPLICABLE  
 5) 2" ANGLE IRON ANCHORED TO CURB WITH 1/2" MASONRY SOLIDERS 18" O.C.  
 6) 6"x12" CONTINUOUS HEADER STRUCTURAL SON TO MIN. DEPTH OF 3'-6" BELOW FINISH GRADE. SEE SPECS FOR DETAILS.  
 7) WAP STONE COMPLETELY WITH FILTER FABRIC TO PREVENT SEWAGE TRANSFER  
 8) HOPE PIPE W/ SLOPE TO DRAIN WHERE INDICATED ON PLANS  
 9) COMPACTED SUBGRADE OR INFILTRATION BASIN. SEE PLANS  
 10) CLEAN AND WASHED #8 STONE PERMEABLE PAYER BEDDING COURSE  
 11) FILTER FABRIC TO COVER PAYER PAYER GRATE  
 12) CLEAN AND WASHED #8 STONE PERMEABLE PAYER BEDDING COURSE  
 13) STEEL FRAME AND MESH SUPPORTS GRATE OR APPROVED EQUAL TO SUPPORT PAYER GRATE FRAME  
 14) 6"x12" CONCRETE HEADER CURB TO STRUCTURAL SOIL  
 15) CONCRETE PAVEMENT  
 NOTE: SEE LANDSCAPE PLAN FOR LIMITS OF STRUCTURAL SOIL

PURPOSE OF THESE DRAWINGS IS TO REFLECT ALL CHANGES AND CLARIFICATIONS MADE THRU PREVIOUSLY ISSUED ADDENDA. CONTRACTOR IS RESPONSIBLE FOR ADHERENCE TO IMPROVEMENTS REFLECTED IN THE CONTRACT BIDS AND SPECIFICATIONS.

FOR LOCATION OF UNDERGROUND UTILITIES, CALL B.U.D. 1-502-286-9123 (2) WORKING DAYS IN ADVANCE OF DIGGING

SD-12.4