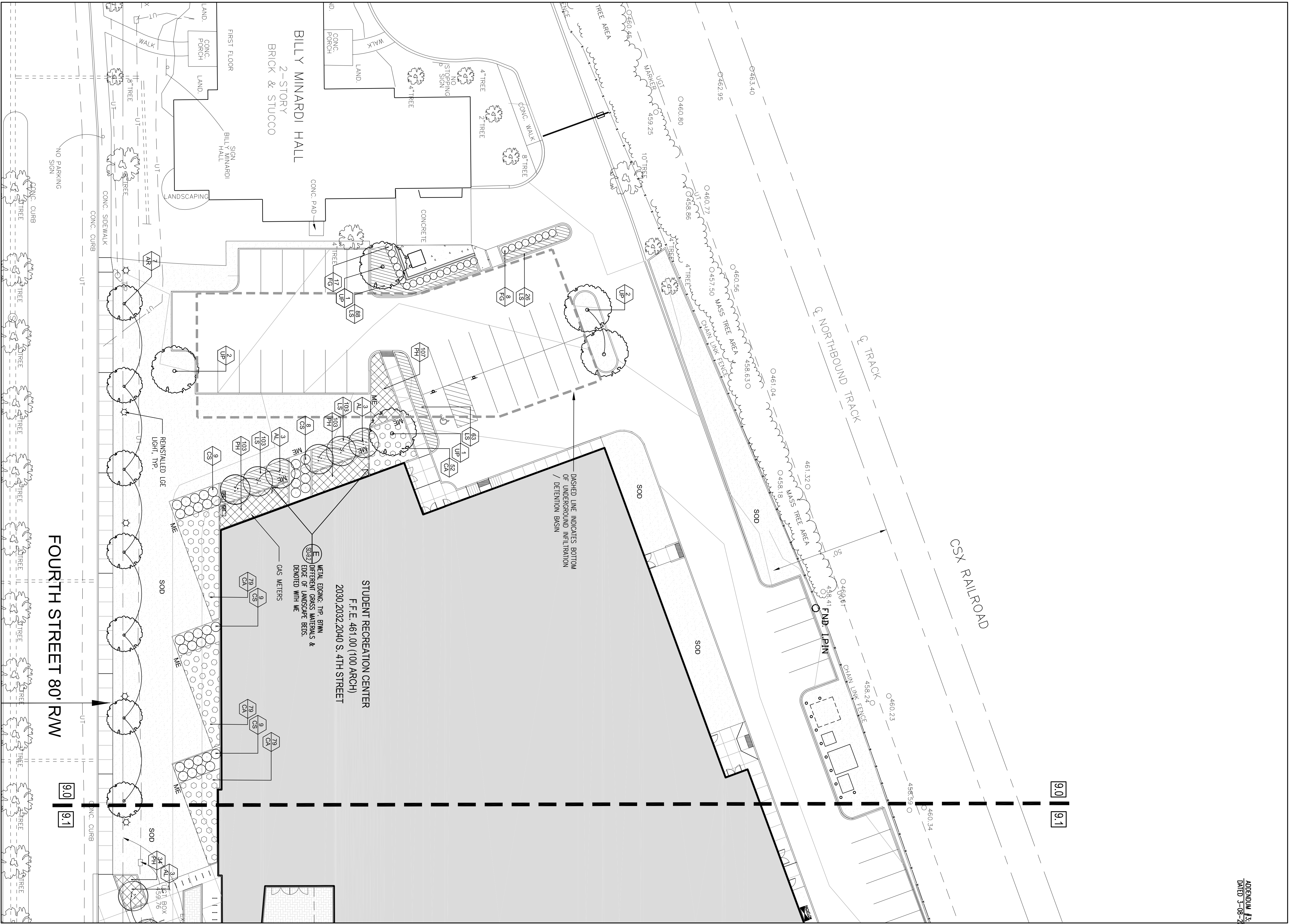
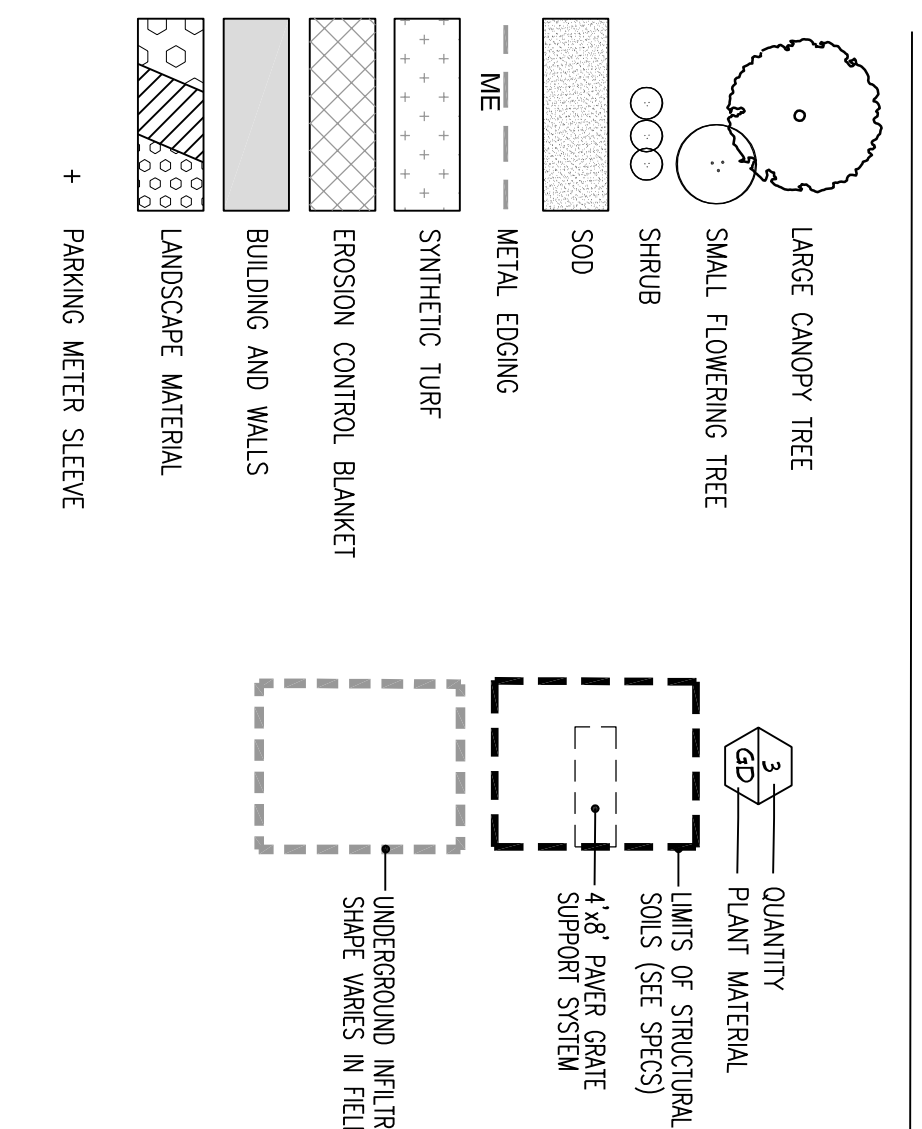


**PLANTING SCHEDULE**

KEY	BOTANICAL NAME	COMMON NAME	QTY	SPECIFICATIONS
TR	Red Oak	Red Oak	11	1 1/2" dia. bare, 6" min. cal. trunk
TR	Red Oak	Red Oak	11	2 1/2" dia. bare, 6" min. cal. trunk
TR	Red Oak	Red Oak	11	3 1/2" dia. bare, 6" min. cal. trunk
TR	Red Oak	Red Oak	11	4 1/2" dia. bare, 6" min. cal. trunk
TR	Red Oak	Red Oak	11	5 1/2" dia. bare, 6" min. cal. trunk
TR	Red Oak	Red Oak	11	6 1/2" dia. bare, 6" min. cal. trunk
TR	Red Oak	Red Oak	11	7 1/2" dia. bare, 6" min. cal. trunk
TR	Red Oak	Red Oak	11	8 1/2" dia. bare, 6" min. cal. trunk
TR	Red Oak	Red Oak	11	9 1/2" dia. bare, 6" min. cal. trunk
TR	Red Oak	Red Oak	11	10 1/2" dia. bare, 6" min. cal. trunk
TR	Red Oak	Red Oak	11	11 1/2" dia. bare, 6" min. cal. trunk
TR	Red Oak	Red Oak	11	12 1/2" dia. bare, 6" min. cal. trunk
TR	Red Oak	Red Oak	11	13 1/2" dia. bare, 6" min. cal. trunk
TR	Red Oak	Red Oak	11	14 1/2" dia. bare, 6" min. cal. trunk
TR	Red Oak	Red Oak	11	15 1/2" dia. bare, 6" min. cal. trunk
TR	Red Oak	Red Oak	11	16 1/2" dia. bare, 6" min. cal. trunk
TR	Red Oak	Red Oak	11	17 1/2" dia. bare, 6" min. cal. trunk
TR	Red Oak	Red Oak	11	18 1/2" dia. bare, 6" min. cal. trunk
TR	Red Oak	Red Oak	11	19 1/2" dia. bare, 6" min. cal. trunk
TR	Red Oak	Red Oak	11	20 1/2" dia. bare, 6" min. cal. trunk
TR	Red Oak	Red Oak	11	21 1/2" dia. bare, 6" min. cal. trunk
TR	Red Oak	Red Oak	11	22 1/2" dia. bare, 6" min. cal. trunk
TR	Red Oak	Red Oak	11	23 1/2" dia. bare, 6" min. cal. trunk
TR	Red Oak	Red Oak	11	24 1/2" dia. bare, 6" min. cal. trunk
TR	Red Oak	Red Oak	11	25 1/2" dia. bare, 6" min. cal. trunk
TR	Red Oak	Red Oak	11	26 1/2" dia. bare, 6" min. cal. trunk
TR	Red Oak	Red Oak	11	27 1/2" dia. bare, 6" min. cal. trunk
TR	Red Oak	Red Oak	11	28 1/2" dia. bare, 6" min. cal. trunk
TR	Red Oak	Red Oak	11	29 1/2" dia. bare, 6" min. cal. trunk
TR	Red Oak	Red Oak	11	30 1/2" dia. bare, 6" min. cal. trunk
TR	Red Oak	Red Oak	11	31 1/2" dia. bare, 6" min. cal. trunk
TR	Red Oak	Red Oak	11	32 1/2" dia. bare, 6" min. cal. trunk
TR	Red Oak	Red Oak	11	33 1/2" dia. bare, 6" min. cal. trunk
TR	Red Oak	Red Oak	11	34 1/2" dia. bare, 6" min. cal. trunk
TR	Red Oak	Red Oak	11	35 1/2" dia. bare, 6" min. cal. trunk
TR	Red Oak	Red Oak	11	36 1/2" dia. bare, 6" min. cal. trunk
TR	Red Oak	Red Oak	11	37 1/2" dia. bare, 6" min. cal. trunk
TR	Red Oak	Red Oak	11	38 1/2" dia. bare, 6" min. cal. trunk
TR	Red Oak	Red Oak	11	39 1/2" dia. bare, 6" min. cal. trunk
TR	Red Oak	Red Oak	11	40 1/2" dia. bare, 6" min. cal. trunk
TR	Red Oak	Red Oak	11	41 1/2" dia. bare, 6" min. cal. trunk
TR	Red Oak	Red Oak	11	42 1/2" dia. bare, 6" min. cal. trunk
TR	Red Oak	Red Oak	11	43 1/2" dia. bare, 6" min. cal. trunk
TR	Red Oak	Red Oak	11	44 1/2" dia. bare, 6" min. cal. trunk
TR	Red Oak	Red Oak	11	45 1/2" dia. bare, 6" min. cal. trunk
TR	Red Oak	Red Oak	11	46 1/2" dia. bare, 6" min. cal. trunk
TR	Red Oak	Red Oak	11	47 1/2" dia. bare, 6" min. cal. trunk
TR	Red Oak	Red Oak	11	48 1/2" dia. bare, 6" min. cal. trunk
TR	Red Oak	Red Oak	11	49 1/2" dia. bare, 6" min. cal. trunk
TR	Red Oak	Red Oak	11	50 1/2" dia. bare, 6" min. cal. trunk
TR	Red Oak	Red Oak	11	51 1/2" dia. bare, 6" min. cal. trunk
TR	Red Oak	Red Oak	11	52 1/2" dia. bare, 6" min. cal. trunk
TR	Red Oak	Red Oak	11	53 1/2" dia. bare, 6" min. cal. trunk
TR	Red Oak	Red Oak	11	54 1/2" dia. bare, 6" min. cal. trunk
TR	Red Oak	Red Oak	11	55 1/2" dia. bare, 6" min. cal. trunk
TR	Red Oak	Red Oak	11	56 1/2" dia. bare, 6" min. cal. trunk
TR	Red Oak	Red Oak	11	57 1/2" dia. bare, 6" min. cal. trunk
TR	Red Oak	Red Oak	11	58 1/2" dia. bare, 6" min. cal. trunk
TR	Red Oak	Red Oak	11	59 1/2" dia. bare, 6" min. cal. trunk
TR	Red Oak	Red Oak	11	60 1/2" dia. bare, 6" min. cal. trunk
TR	Red Oak	Red Oak	11	61 1/2" dia. bare, 6" min. cal. trunk
TR	Red Oak	Red Oak	11	62 1/2" dia. bare, 6" min. cal. trunk
TR	Red Oak	Red Oak	11	63 1/2" dia. bare, 6" min. cal. trunk
TR	Red Oak	Red Oak	11	64 1/2" dia. bare, 6" min. cal. trunk
TR	Red Oak	Red Oak	11	65 1/2" dia. bare, 6" min. cal. trunk
TR	Red Oak	Red Oak	11	66 1/2" dia. bare, 6" min. cal. trunk
TR	Red Oak	Red Oak	11	67 1/2" dia. bare, 6" min. cal. trunk
TR	Red Oak	Red Oak	11	68 1/2" dia. bare, 6" min. cal. trunk
TR	Red Oak	Red Oak	11	69 1/2" dia. bare, 6" min. cal. trunk
TR	Red Oak	Red Oak	11	70 1/2" dia. bare, 6" min. cal. trunk
TR	Red Oak	Red Oak	11	71 1/2" dia. bare, 6" min. cal. trunk
TR	Red Oak	Red Oak	11	72 1/2" dia. bare, 6" min. cal. trunk
TR	Red Oak	Red Oak	11	73 1/2" dia. bare, 6" min. cal. trunk
TR	Red Oak	Red Oak	11	74 1/2" dia. bare, 6" min. cal. trunk
TR	Red Oak	Red Oak	11	75 1/2" dia. bare, 6" min. cal. trunk
TR	Red Oak	Red Oak	11	76 1/2" dia. bare, 6" min. cal. trunk
TR	Red Oak	Red Oak	11	77 1/2" dia. bare, 6" min. cal. trunk
TR	Red Oak	Red Oak	11	78 1/2" dia. bare, 6" min. cal. trunk
TR	Red Oak	Red Oak	11	79 1/2" dia. bare, 6" min. cal. trunk
TR	Red Oak	Red Oak	11	80 1/2" dia. bare, 6" min. cal. trunk
TR	Red Oak	Red Oak	11	81 1/2" dia. bare, 6" min. cal. trunk
TR	Red Oak	Red Oak	11	82 1/2" dia. bare, 6" min. cal. trunk
TR	Red Oak	Red Oak	11	83 1/2" dia. bare, 6" min. cal. trunk
TR	Red Oak	Red Oak	11	84 1/2" dia. bare, 6" min. cal. trunk
TR	Red Oak	Red Oak	11	85 1/2" dia. bare, 6" min. cal. trunk
TR	Red Oak	Red Oak	11	86 1/2" dia. bare, 6" min. cal. trunk
TR	Red Oak	Red Oak	11	87 1/2" dia. bare, 6" min. cal. trunk
TR	Red Oak	Red Oak	11	88 1/2" dia. bare, 6" min. cal. trunk
TR	Red Oak	Red Oak	11	89 1/2" dia. bare, 6" min. cal. trunk
TR	Red Oak	Red Oak	11	90 1/2" dia. bare, 6" min. cal. trunk
TR	Red Oak	Red Oak	11	91 1/2" dia. bare, 6" min. cal. trunk
TR	Red Oak	Red Oak	11	92 1/2" dia. bare, 6" min. cal. trunk
TR	Red Oak	Red Oak	11	93 1/2" dia. bare, 6" min. cal. trunk
TR	Red Oak	Red Oak	11	94 1/2" dia. bare, 6" min. cal. trunk
TR	Red Oak	Red Oak	11	95 1/2" dia. bare, 6" min. cal. trunk
TR	Red Oak	Red Oak	11	96 1/2" dia. bare, 6" min. cal. trunk
TR	Red Oak	Red Oak	11	97 1/2" dia. bare, 6" min. cal. trunk
TR	Red Oak	Red Oak	11	98 1/2" dia. bare, 6" min. cal. trunk
TR	Red Oak	Red Oak	11	99 1/2" dia. bare, 6" min. cal. trunk
TR	Red Oak	Red Oak	11	100 1/2" dia. bare, 6" min. cal. trunk

**LANDSCAPE NOTES**

1. THE PLANT LIST ARE FOR CONFORMANCE. LANDSCAPE CONTRACTOR IS RESPONSIBLE FOR ALL PLANTS SHOWN ON THE PLANNING PHASE OF PROPOSALS. SEE SECTION 16.00 FOR PLANT LIST AND PLANTING PLANS. THE PLANTS ARE TO OBTAIN THE PLANT LIST IN ALL CASES.
2. ALL PLANT MATERIAL SIZES SPECIFIED ARE MINIMUM SIZES. CONTRACTOR SIZE SHALL BE INCREASED IF NECESSARY TO PROVIDE OVERALL PLANT SIZE SPECIFIED.
3. CONTRACTOR SHALL PROVIDE ALL NECESSARY PLANTING MATERIALS AND LABOR.
4. CONTRACTOR SHALL PROVIDE ALL NECESSARY PLANTING MATERIALS AND LABOR.
5. CONTRACTOR SHALL PROVIDE ALL NECESSARY PLANTING MATERIALS AND LABOR.
6. CONTRACTOR SHALL PROVIDE ALL NECESSARY PLANTING MATERIALS AND LABOR.
7. CONTRACTOR SHALL PROVIDE ALL NECESSARY PLANTING MATERIALS AND LABOR.
8. CONTRACTOR SHALL PROVIDE ALL NECESSARY PLANTING MATERIALS AND LABOR.
9. CONTRACTOR SHALL PROVIDE ALL NECESSARY PLANTING MATERIALS AND LABOR.
10. CONTRACTOR SHALL PROVIDE ALL NECESSARY PLANTING MATERIALS AND LABOR.



**SITE LANDSCAPE PLAN**  
SCALE: 1"=20'-0"

Consolidated Addenda 3-11-12

University of Louisville - Student Recreational Facility (Bid Phase #4 )

100 % CD's  
Louisville, Ky

Drawing Name / Description	LANDSCAPE PLAN	#	Revision Date
U of L Project Number:		1	
A&E Project Number:		2	
Date:	JANUARY, 2012	3	
Drawn By:	SDS	4	
Checked By:	JLC / KLV	5	
		6	
		7	
		8	

**CARMAN**  
ENVIRONMENTS FULLY REALIZED  
Landscape Architecture • Land Planning • Site Engineering  
310 OLD EAST VINE STREET LEXINGTON, KY 40506  
P: (859) 254-9803 F: (859) 255-8625

**Omni ARCHITECTS**  
212 North Upper Street  
Lexington, Kentucky  
40507-1001  
P: 859.252.6664  
F: 859.253.2358  
www.omniarchitects.com

**SD-9.0**

FOR LOCATION OF UNDERGROUND UTILITIES, CALL B.U.D. 1-502-286-9123 (2) WORKING DAYS IN ADVANCE OF DIGGING