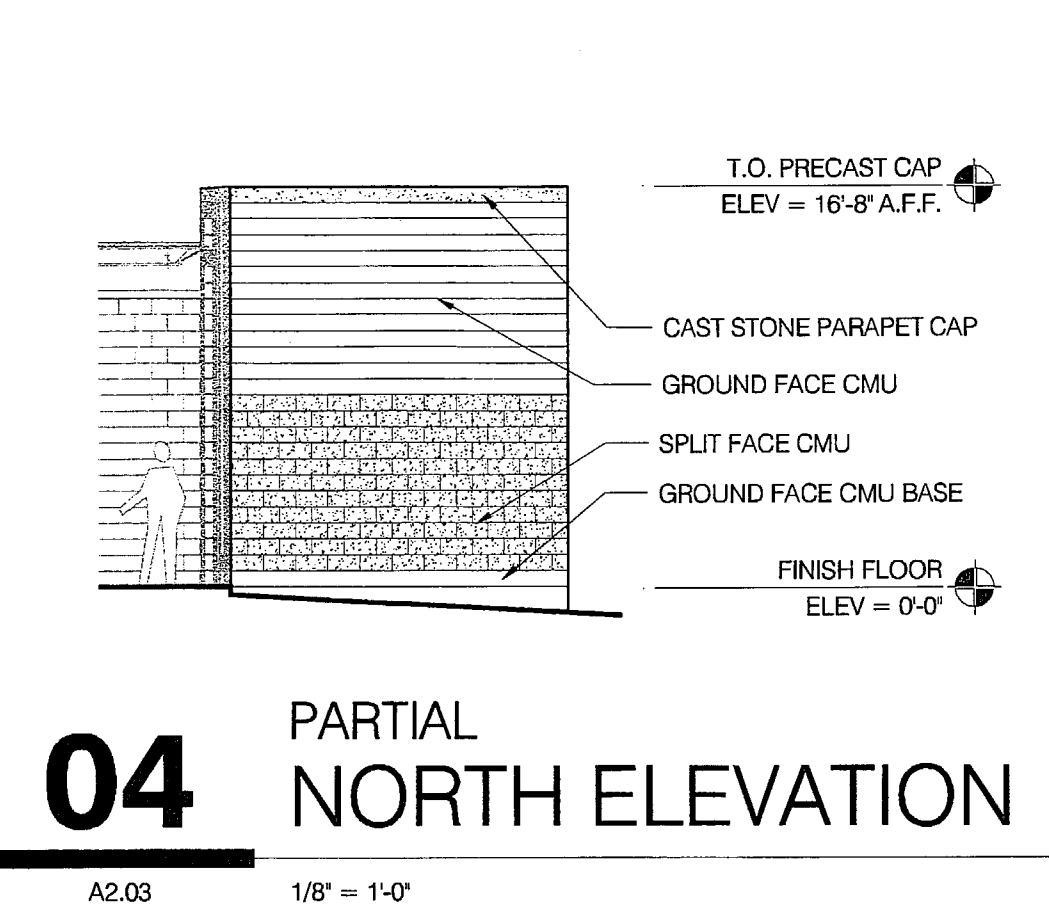
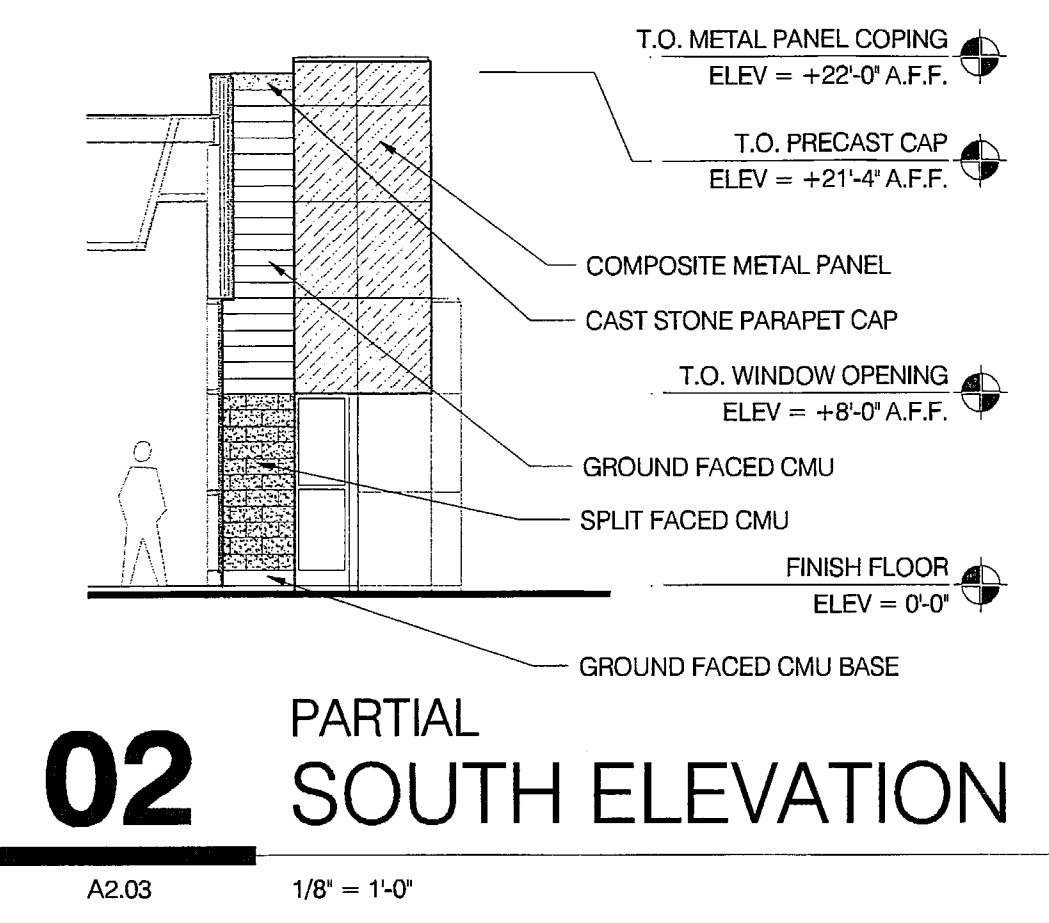


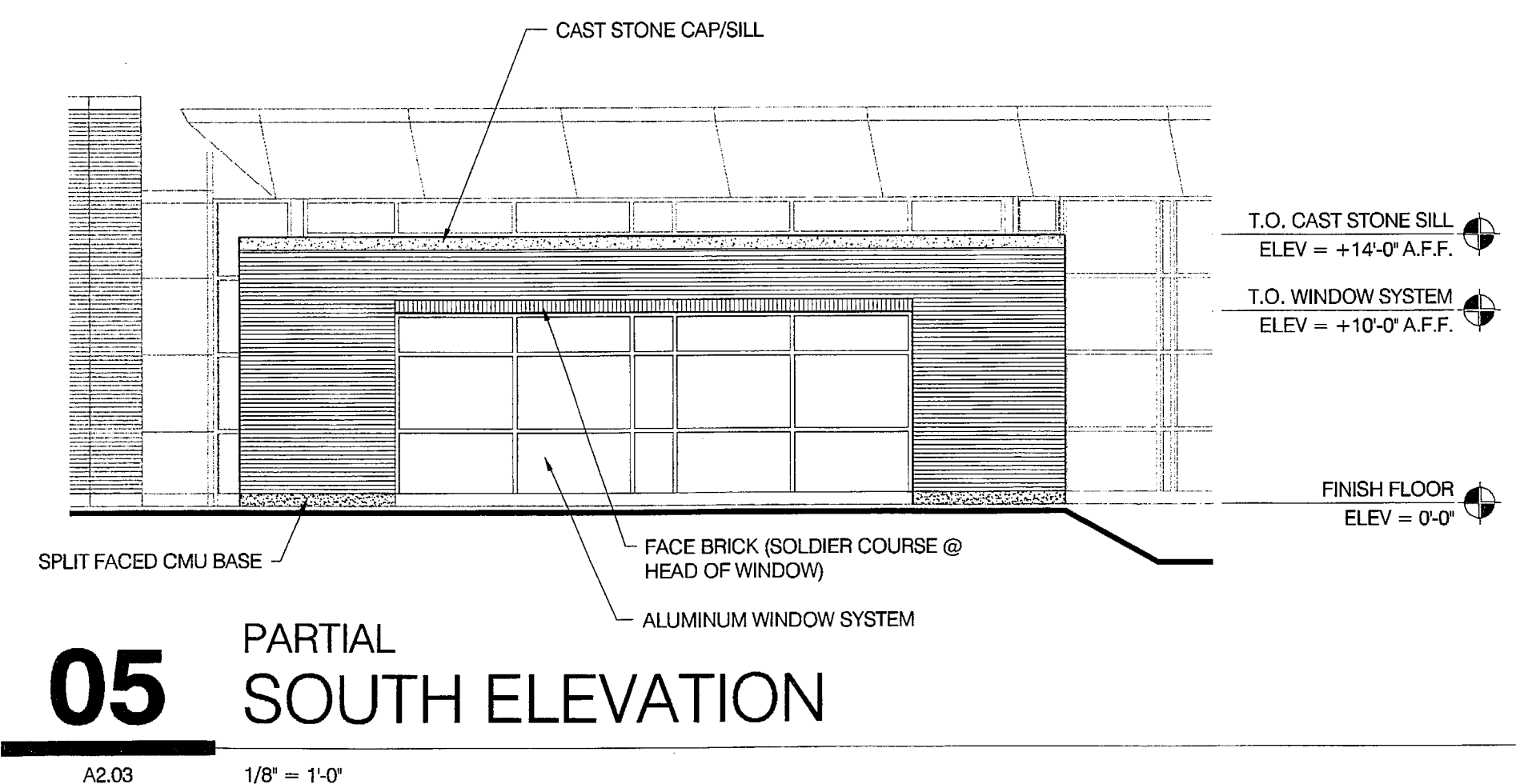
06 PARTIAL SOUTH ELEVATION
A2.03 1/8" = 1'-0"



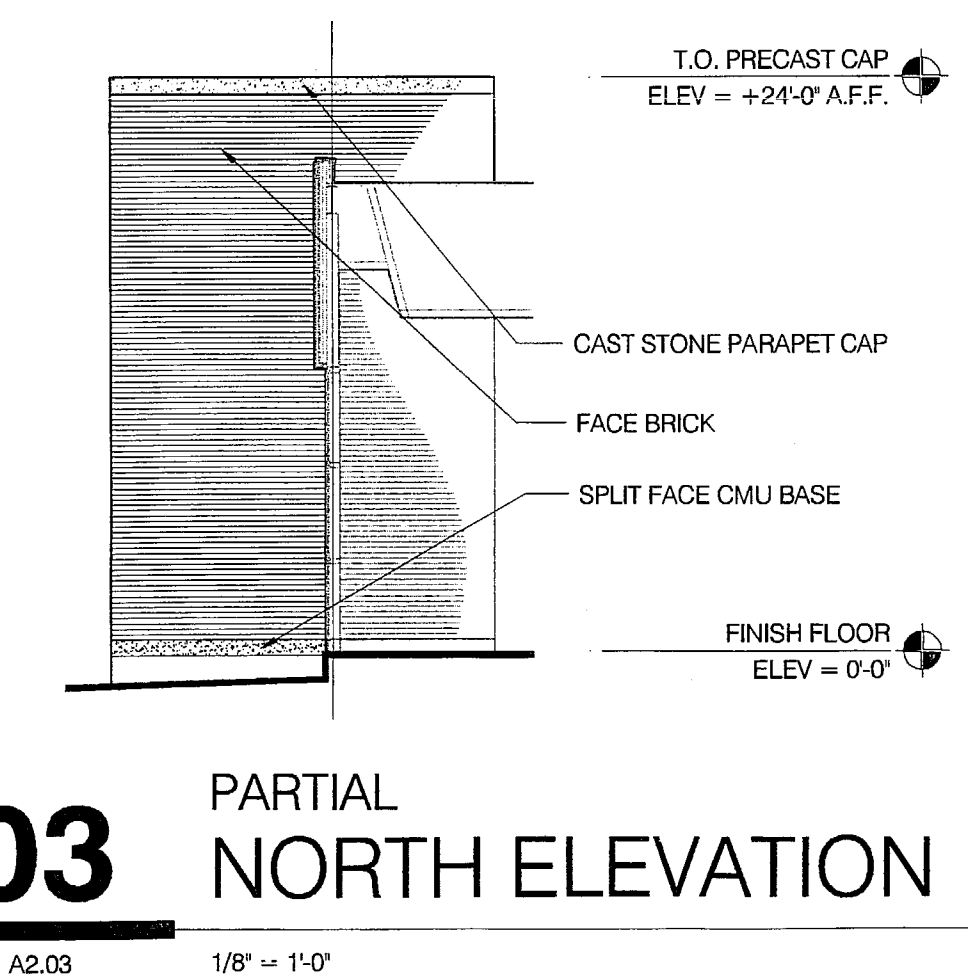
04 PARTIAL NORTH ELEVATION
A2.03 1/8" = 1'-0"



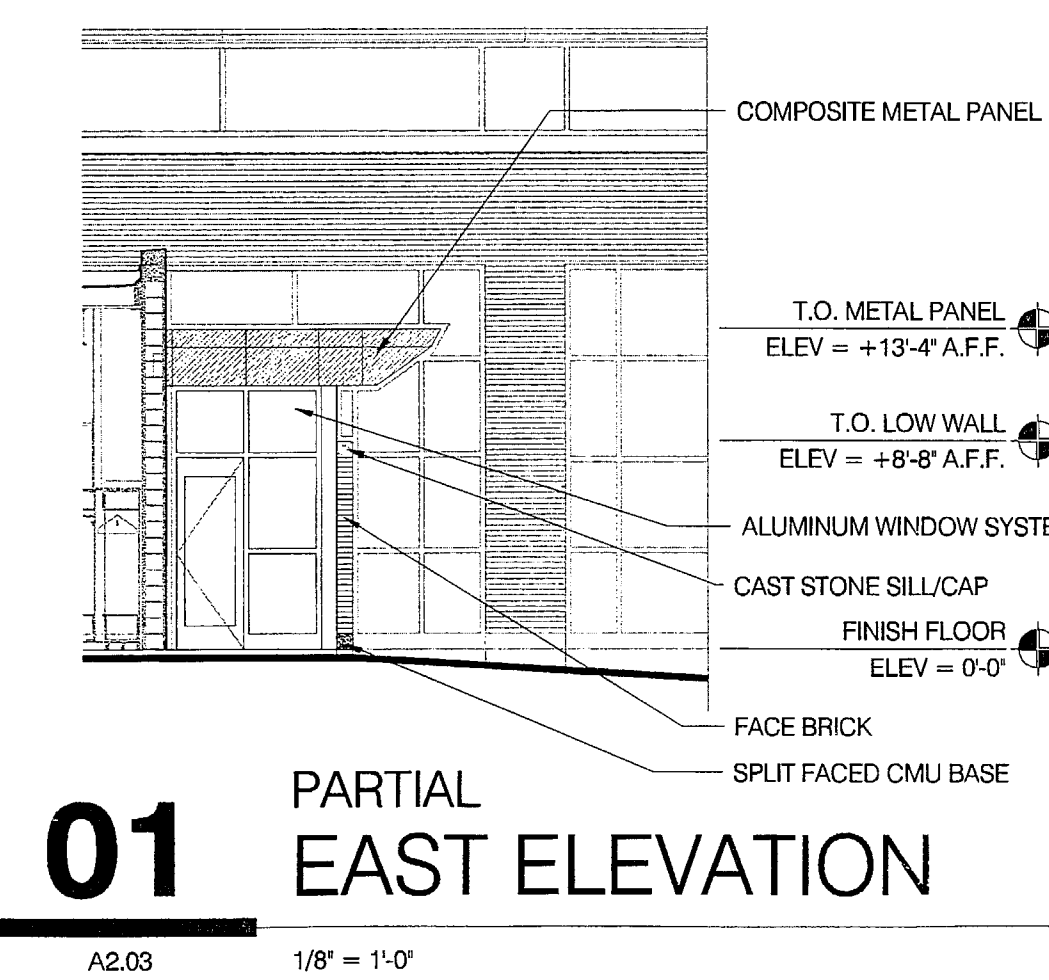
02 PARTIAL SOUTH ELEVATION
A2.03 1/8" = 1'-0"



05 PARTIAL SOUTH ELEVATION
A2.03 1/8" = 1'-0"



03 PARTIAL NORTH ELEVATION
A2.03 1/8" = 1'-0"



01 PARTIAL EAST ELEVATION
A2.03 1/8" = 1'-0"



CERTIFICATION
CONSTRUCTION DOCUMENTS

CARDINAL PARK NATATORIUM

UNIVERSITY OF LOUISVILLE

Project: 03006
Drawn: D. MCCLOSKEY
Checked: J. LINDSTAEDT
Scale: 1/8" = 1'-0"
Issue Date: AUGUST 27, 2003
Revision:

PARTIAL ELEVATIONS

A2.03