

Browning Day Mullins Dierdorf Architects  
Architecture  
Landscape Architecture  
Planning

334 North Senate Avenue  
Indianapolis, Indiana 46204  
P: 317.635.5330  
F: 317.634.5409  
E-Mail: jllindstaedt@bdmd.com

Circle Design Group, Inc.  
Mechanical Electrical Plumbing Engineers

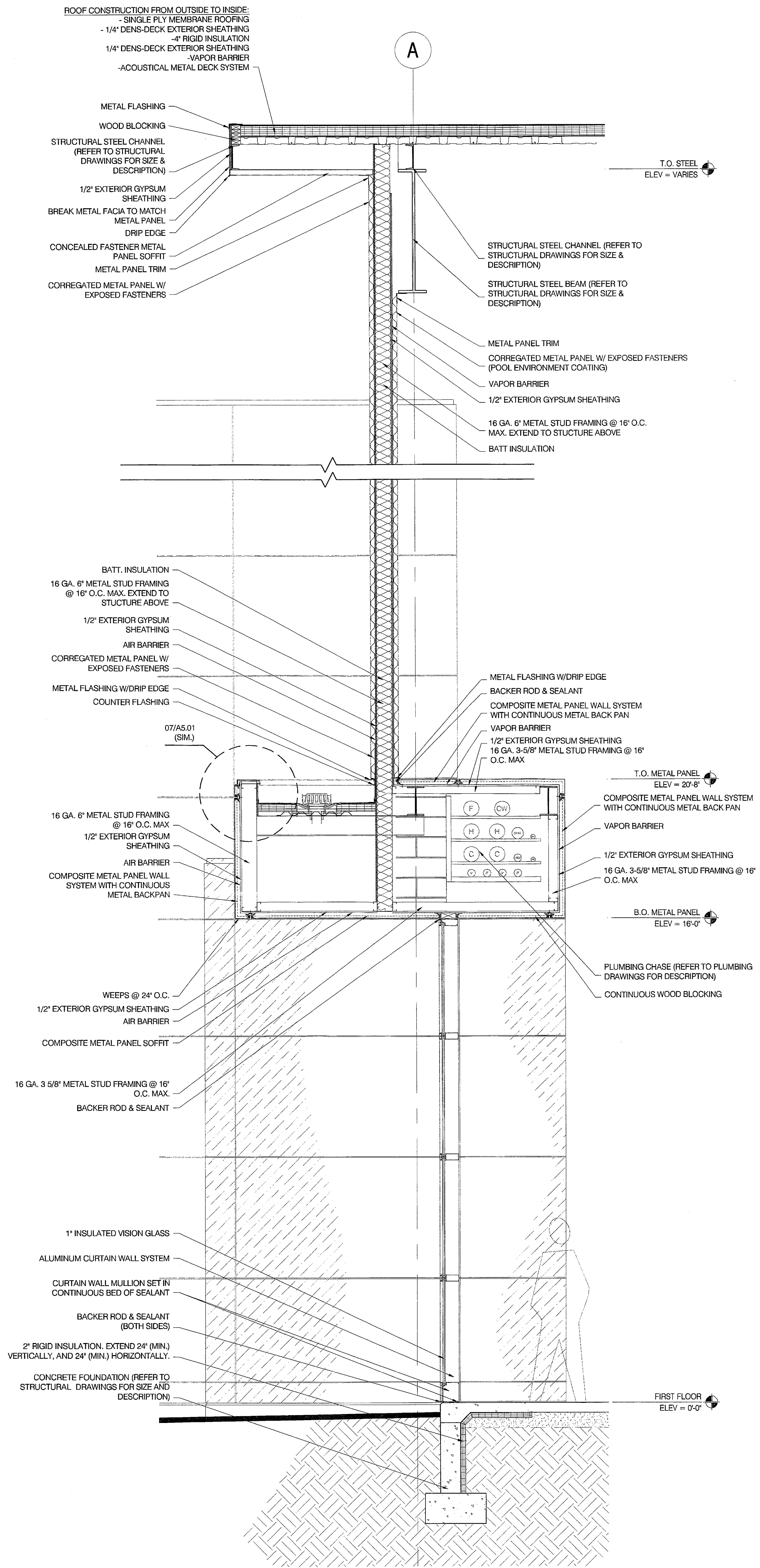
5510 South East Street, Suite F  
Indianapolis, Indiana 46227  
P: 317.781.6200  
F: 317.781.6201  
E-Mail: kerry@circledesigngroup.com

Lawson Elser Engineering Consultants  
Structural Engineers

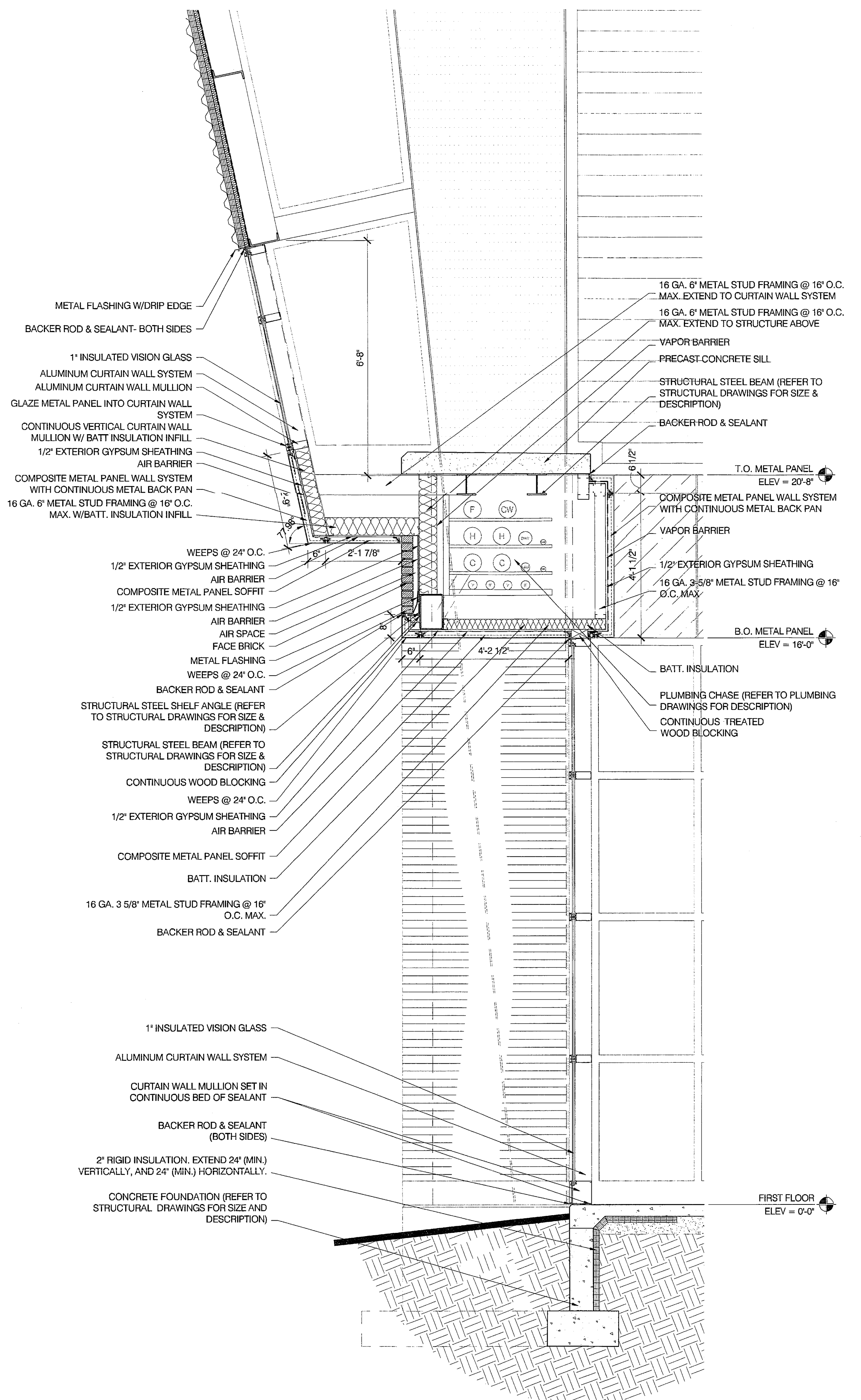
650 East Carmel Drive, Suite 150  
Carmel, Indiana 46032  
P: 317.574.8409  
F: 317.574.8431  
E-Mail: mlawson@lawsonelser.com

Skees Engineering, Inc.  
Civil Engineers

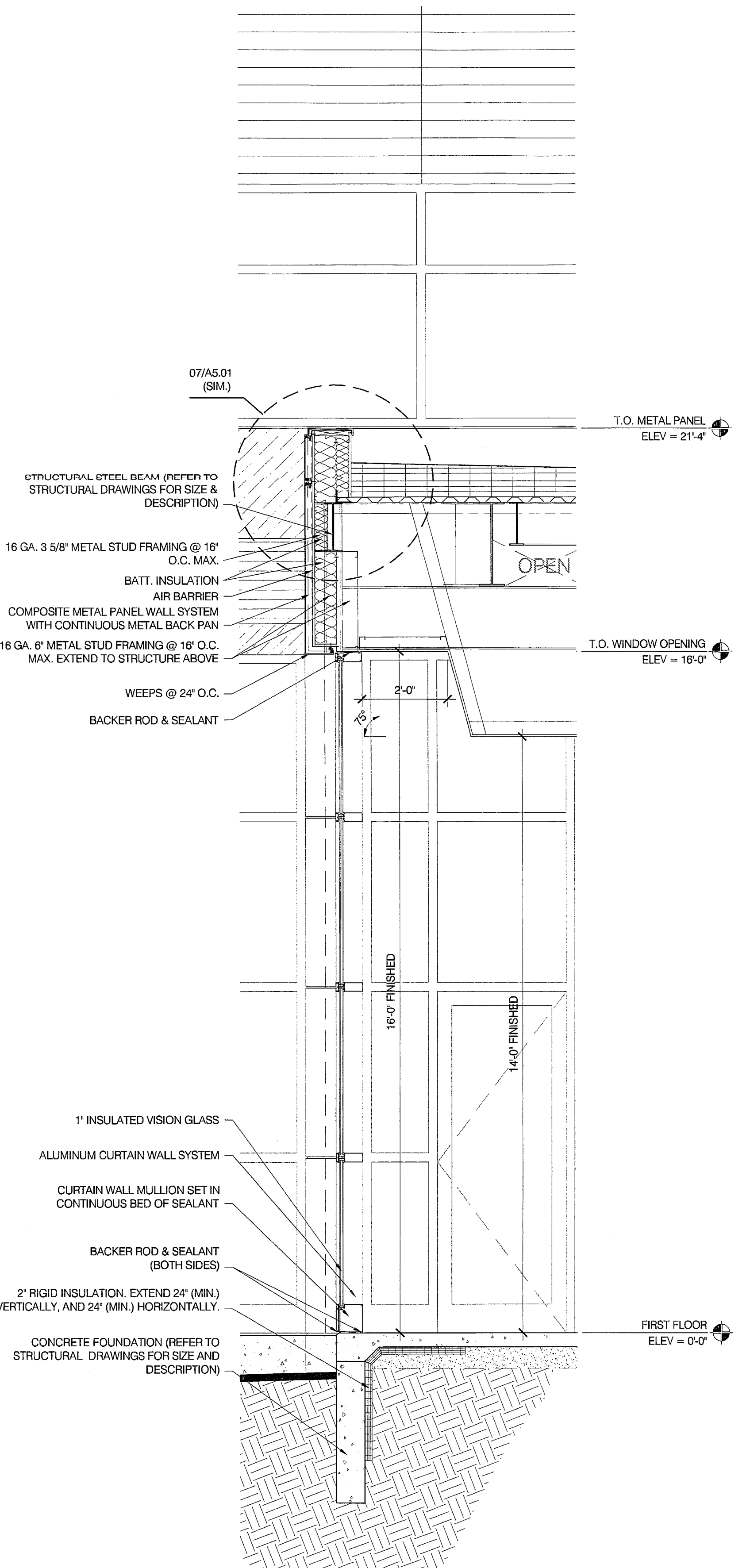
400 Blankenbaker Parkway, Suite 300  
Louisville, KY 40243  
P: 502.254.2344  
F: 502.254.3008  
E-Mail: dmckinnon@skees.com



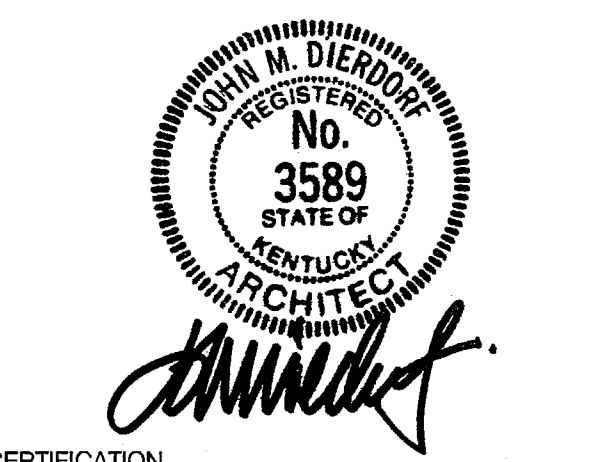
**03** WALL SECTION  
A3.06 1/2" = 1'-0"



**02** WALL SECTION  
A3.06 1/2" = 1'-0"



**01** WALL SECTION  
A3.06 1/2" = 1'-0"



CERTIFICATION  
CONSTRUCTION DOCUMENTS

CARDINAL PARK NATATORIUM

UNIVERSITY OF LOUISVILLE

Project: 03006  
Drawn: D. MCCLOSKEY  
Checked: J. LINDSTAEDT  
Scale: AUGUST 27, 2003  
Issue Date:  
Revision:

WALL SECTIONS

**A3.06**

I:\2003\03006 - Lock, Natatorium\Draw\CD\03006a3.06.dwg 03/28/03 2:36PM