

**BROWNING
DAY MULLINS
DIERDORF
ARCHITECTS**

Browning Day Mullins Dierdorf Architects
Architecture
Landscape Architecture
Planning

334 North Senate Avenue
Indianapolis, Indiana 46204
P: 317.635.5000
F: 317.781.5000
E-Mail: jindstaed@bdmrd.com

Circle Design Group, Inc.
Mechanical Electrical Plumbing Engineers

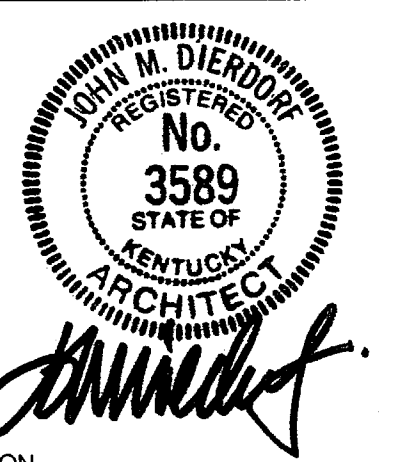
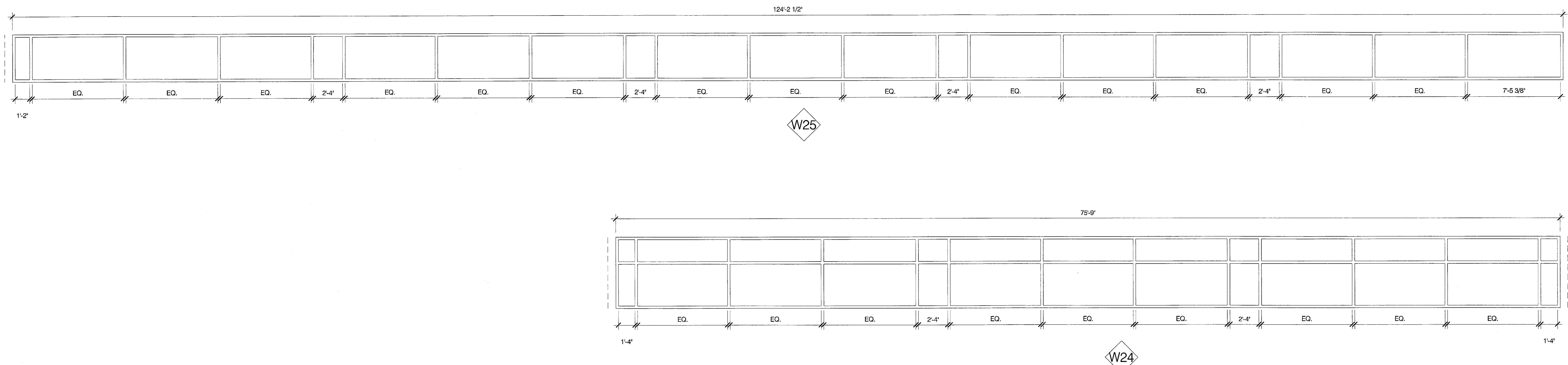
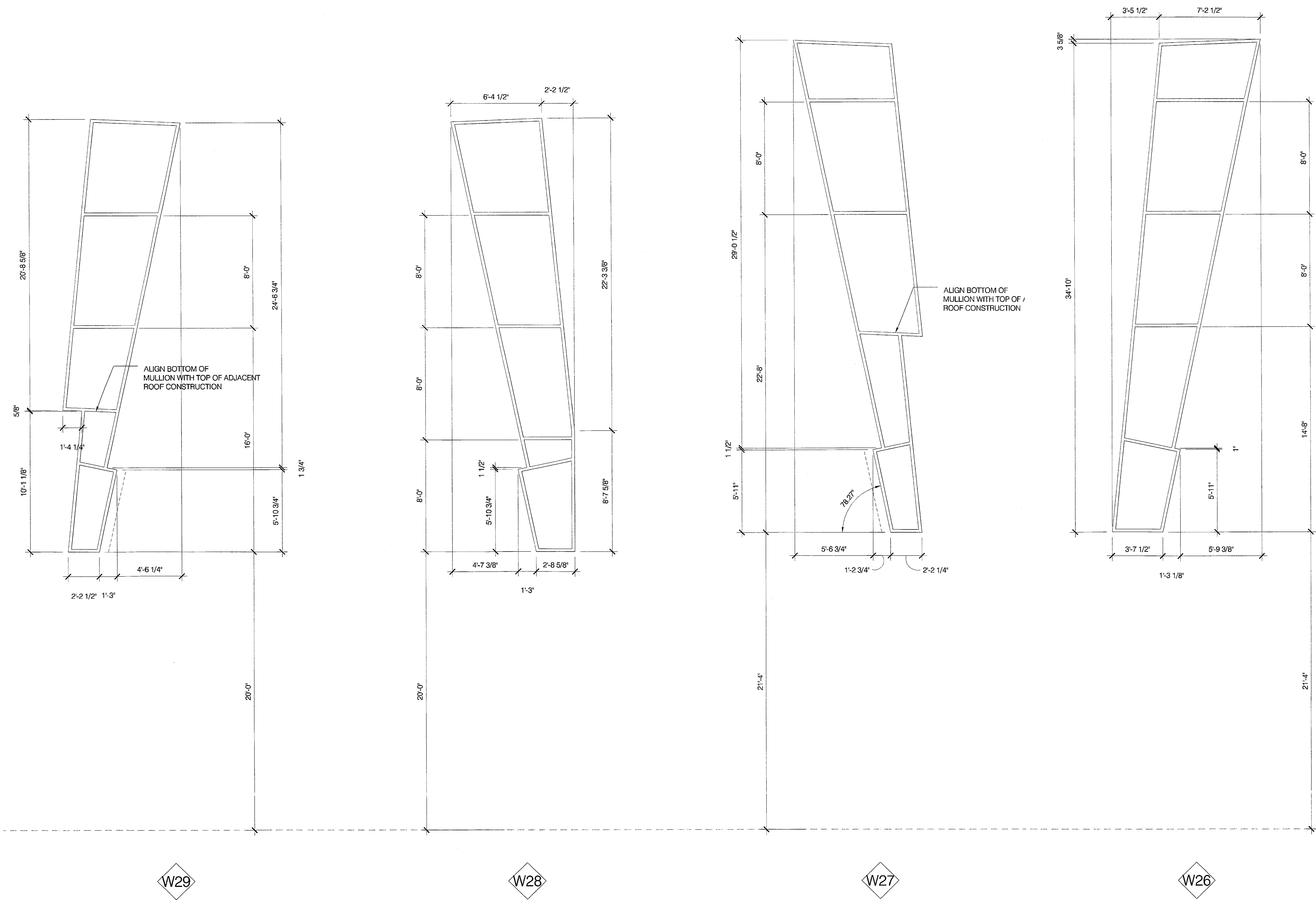
5510 South East Street, Suite F
Indianapolis, Indiana 46227
P: 317.781.6300
F: 317.781.6201
E-Mail: kerry@circledesigngroup.com

Lawson Elser Engineering Consultants
Structural Engineers

650 East Carmel Drive, Suite 150
Carmel, Indiana 46032
P: 317.574.9409
F: 317.574.9431
E-Mail: mlawson@lawsonelser.com

Skees Engineering, Inc.
Civil Engineers

400 Blankenbaker Parkway, Suite 300
Louisville, KY 40243
P: 502.254.2344
F: 502.254.3008
E-Mail: dmckinnon@skees.com



CERTIFICATION
**CONSTRUCTION
DOCUMENTS**

**CARDINAL PARK
NATORIUM**

UNIVERSITY OF LOUISVILLE

Project: 09006
Drawn: D. MCCLOSKEY
Checked: J. LINDSTAEDT
Scale:
Issue Date: AUGUST 27, 2003
Revision:

**WINDOW ELEVATIONS
CLERESTORY**

A6.03

OFFICIAL BID DOCUMENT