

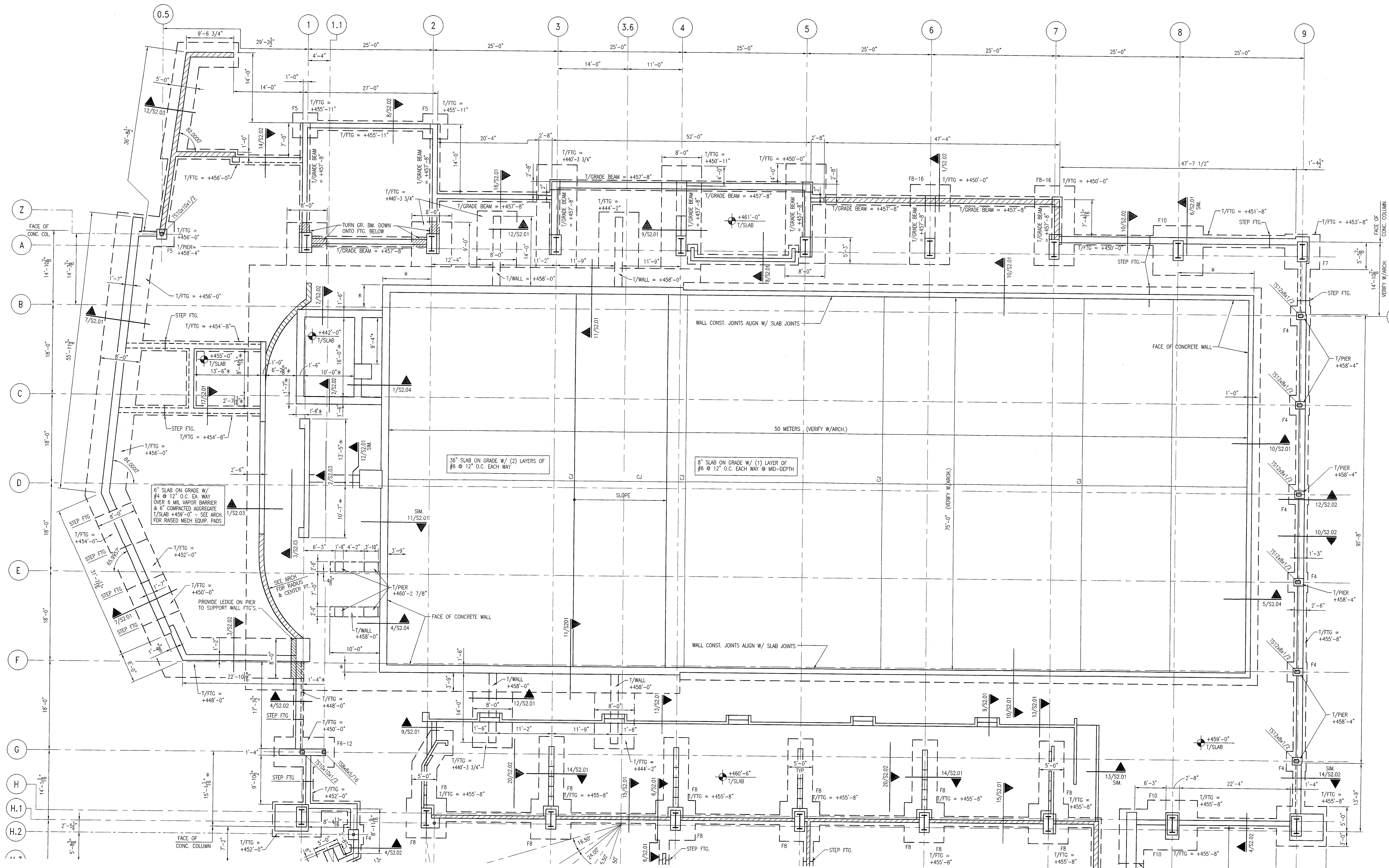
Browning Day Mullins Dierdorf Architects
Landscape Architecture
Planning

334 North Senate Avenue
Indianapolis, Indiana 46204
P: 317.635.5030
F: 317.634.5409
E-Mail: jindstact@bdmd.com

Circle Design Group, Inc.
Mechanical Electrical Plumbing Engineers
5510 South East Street, Suite F
Indianapolis, Indiana 46227
P: 317.781.6200
F: 317.781.6201
E-Mail: kerry@circledesigngroup.com

Lawson Eiser Engineering Consultants
Structural Engineers
650 East Carmel Drive, Suite 150
Carmel, Indiana 46032
P: 317.574.9429
F: 317.574.9431
E-Mail: mtawson@lawsoneiser.com

Skees Engineering, Inc.
Civil Engineers
403 Bankersbank Parkway, Suite 300
Louisville, KY 40243
P: 502.264.2344
F: 502.264.3006
E-Mail: dmckinnon@skees.com



PARTIAL FOUNDATION PLAN—POOL AREA
SCALE: 1/8"=1'-0"



NOTES:
* = VERIFY DIMENSION W/ARCH.
SEE 2/S2.01 FOR STEP FOOTING DETAIL.
SEE 1/S5.03 FOR REQ'D PRE-ENGINEERED BUILDING FRAME PROFILE AND DIMENSIONS.
SEE 3/S2.01 FOR CRACK CONTROL JOINT DETAIL. LOCATION OF CONTROL JOINTS AND COLORED/STAINED CONCRETE TO BE COORDINATED WITH THE ARCHITECT. MAXIMUM SPACING OF CONTROL JOINTS TO BE 10'-0" O.C. EACH WAY & AT COLUMN LINES. CONSTRUCTION JOINT LAYOUTS TO BE SUBMITTED TO THE ENGINEER FOR FINAL APPROVAL.

FOOTING SCHEDULE			
f _c = 3000 psi FOR 2000 PSF SOIL BEARING			
FTG MARK	SIZE L x W x THK	REINFORCING (GRADE 60)	TOP FOOTING EL (UON)
F4	4'-0"x4'-0"x1'-3"	5-#5 EA WAY	SEE PLAN
F5	5'-0"x5'-0"x1'-3"	6-#5 EA WAY	
F7	7'-0"x7'-0"x1'-3"	8-#6 EA WAY	
F8	8'-0"x8'-0"x1'-3"	9-#7 EA WAY	
F8A	8'-0"x8'-0"x1'-3"	9-#7 EA WAY TOP & BOTTOM	
F10	10'-0"x10'-0"x2'-3"	11-#8 EA WAY	
F8-12	6'-0"x12'-0"x1'-6"	7-#10 LONG, 14-#6 LAT	
F8-16	8'-0"x16'-0"x2'-3"	9-#7 LONG, TOP & BOT. 17-#7 TRANSV. TOP & BOT.	

Michael J. Lawson
CERTIFICATION
CONSTRUCTION DOCUMENTS

CARDINAL PARK
NATATORIUM

UNIVERSITY OF LOUISVILLE

Project: 03006
Drawn: TJR
Checked: MJL
Scale: AS NOTED
Issue Date: AUGUST 27, 2003
Revision:

FOUNDATION PLAN