

Browning Day Mullins Dierdorf Architects
Architecture
Landscape Architecture
Planning

334 North Senate Avenue
Indianapolis, Indiana 46204
P: 317.635.5030
F: 317.634.5409
E-Mail: jindstaedi@bdmd.com

Circle Design Group, Inc.
Mechanical Electrical Plumbing Engineers

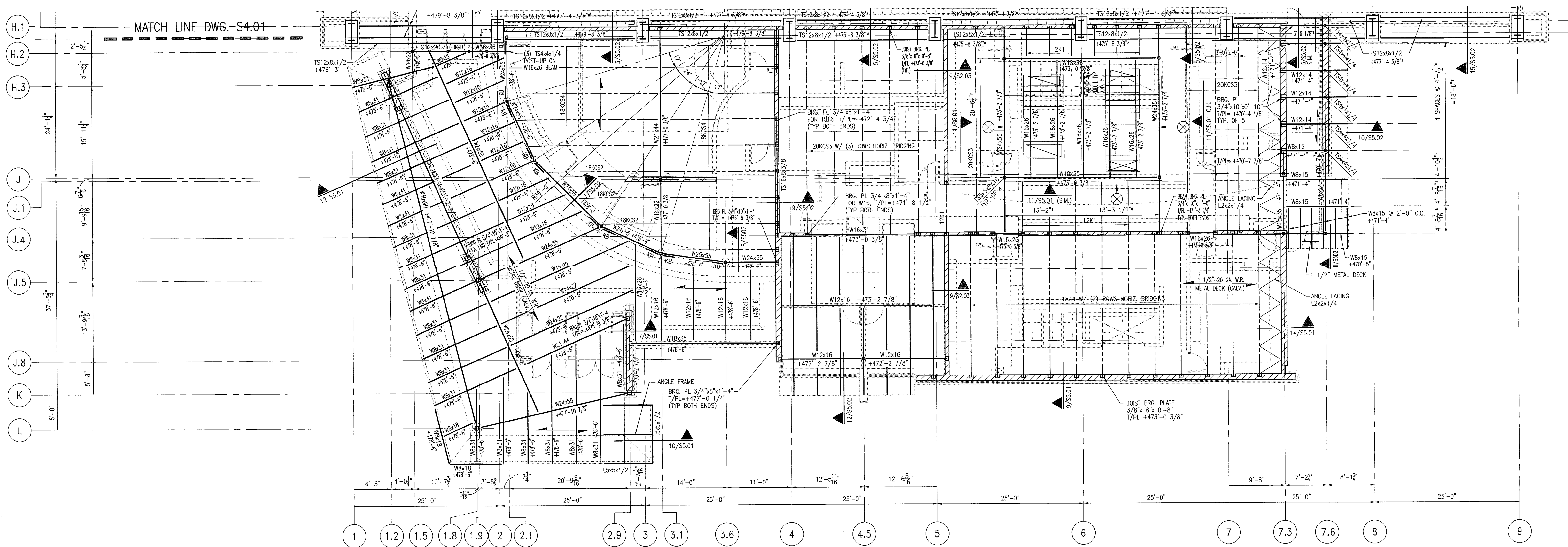
5510 South East Street, Suite F
Indianapolis, Indiana 46227
P: 317.781.6200
F: 317.781.6201
E-Mail: kerry@circledesigngroup.com

Lawson Elser Engineering Consultants
Structural Engineers

650 East Carmel Drive, Suite 150
Carmel, Indiana 46032
P: 317.574.9409
F: 317.574.9431
E-Mail: mlawson@lawsonelser.com

Skees Engineering, Inc.
Civil Engineers

400 Blankenbaker Parkway, Suite 300
Louisville, KY 40243
P: 502.254.2344
F: 502.254.2028
E-Mail: dmckinnon@skees.com



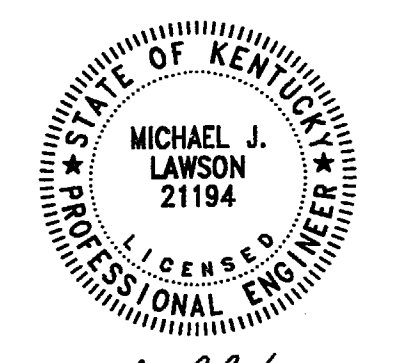
PARTIAL ROOF FRAMING PLAN-SUPPORT AREA

SCALE: 1/8"=1'-0"



NOTES:

- * VERIFY DIMENSION/ELEVATION W/ ARCH
- ⊗ = TS4x4x5/16 BRACING THIS BAY
- KB = JL4x4x3/8 KNEE BRACE (TYP.)



Michael J. Lawson

CERTIFICATION

**CONSTRUCTION
DOCUMENTS**

**CARDINAL PARK
NATATORIUM**

UNIVERSITY OF LOUISVILLE

Project: 03008
Drawn: TJR
Checked: M.J.
Scale: AS NOTED
Issue Date: AUGUST 27, 2003
Revision:

ROOF FRAMING

S4.02

GENERAL BUILDING