

BROWNING DAY MULLINS DIERDORF ARCHITECTS

Browning Day Mullins Dierdorf Architects
Architecture
Landscape Architecture
Planning

334 North Senate Avenue
Indianapolis, Indiana 46204
P: 317.835.5030
F: 317.534.9439
E-Mail: jfindstead@bdmd.com

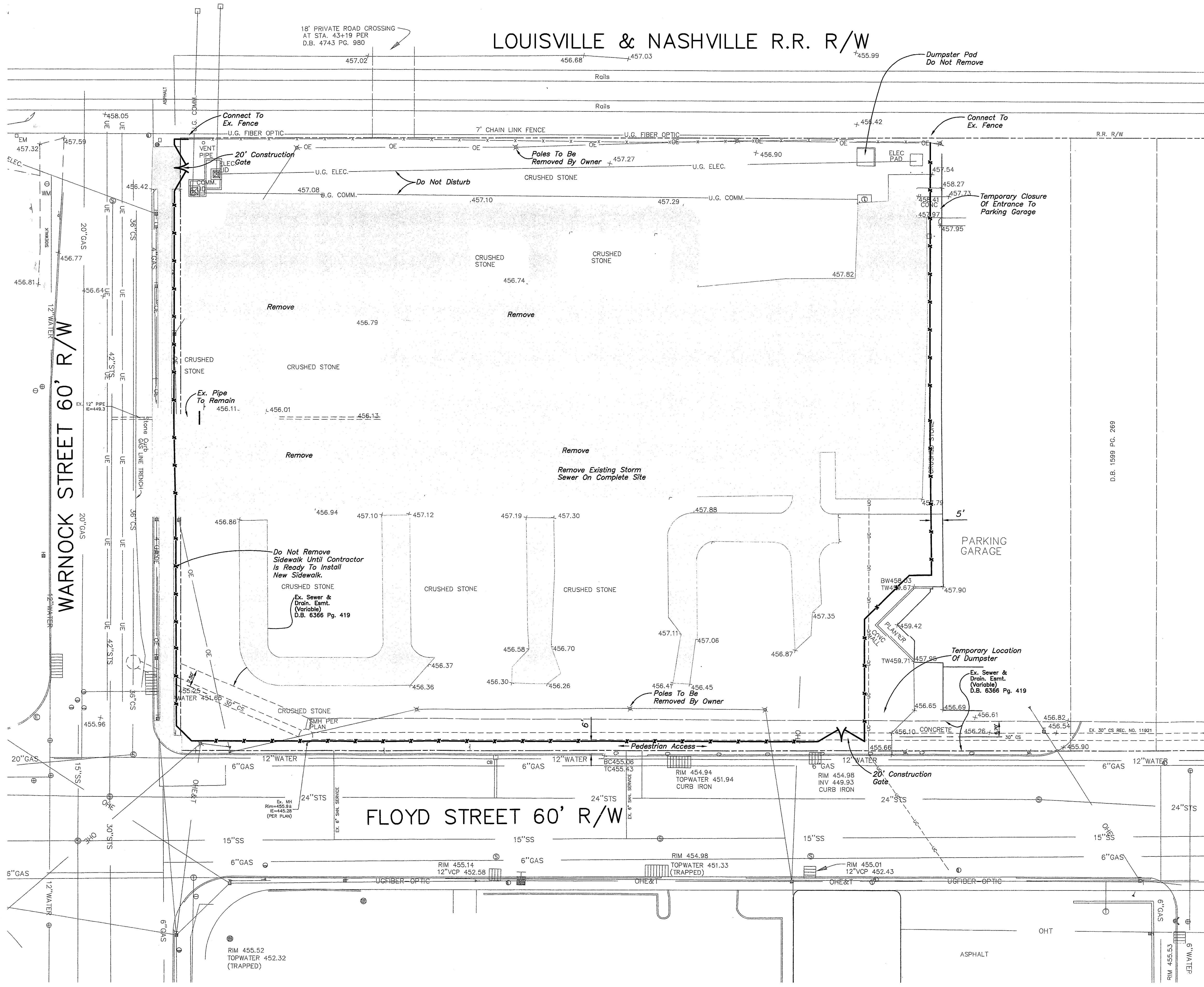
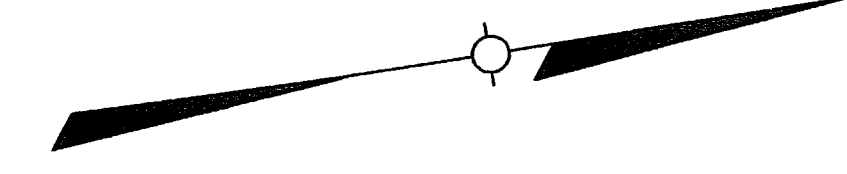
Circle Design Group, Inc.
Mechanical Electrical Plumbing Engineers
6510 South East Street, Suite F
Indianapolis, Indiana 46227
P: 317.781.6200
F: 317.781.6201
E-Mail: kerry@circledesigngroup.com

Lawson Elser Engineering Consultants
Structural Engineers

650 East Carmel Drive, Suite 150
Carmel, Indiana 46032
P: 317.574.9409
F: 317.574.9431
E-Mail: mteveson@lawsonelser.com

Skees Engineering, Inc.
Civil Engineers

400 Blankenbaker Parkway, Suite 300
Louisville, KY 40243
P: 502.254.2344
F: 502.254.3008
E-Mail: dmckinnon@skees.com



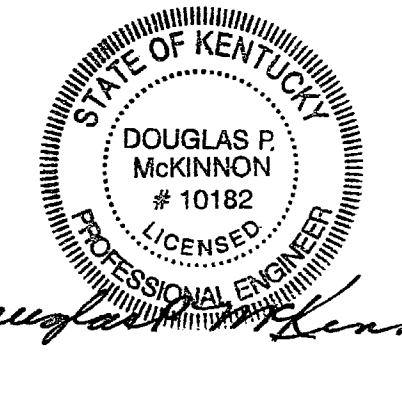
LEGEND

Pavement to be removed. Leave stone base under pavement in place during construction, until site work begins.

GENERAL NOTES

1. Adjust new fence location as necessary to miss existing poles, trees, walls, and other obstacles.
2. Work includes the removal and disposal of asphalt, concrete pavement, existing sidewalks, underground drainage facilities, and the installation of a temporary construction fence and gates. Fence shall be 7' chain link and movable.
3. Protect facilities to remain against damage during demolition. Promptly patch and repair holes and damaged surfaces caused to adjacent areas by selective demolition operations. Return disturbed adjacent areas to condition existing before start of demolition.
4. Verify that utilities have been abandoned, disconnected, or capped before disturbing them. Survey existing conditions and correlate with requirements indicated to determine extent of demolition required.
5. Do not interrupt existing utilities serving occupied or operating facilities, except when authorized in writing by Owner and authorities having jurisdiction. Provide temporary services during interruptions to existing utilities, as acceptable to Owner and to governing authorities. Provide not less than 72 hours notice to Owner if shutdown of service is required during changeover.
6. Do not close or obstruct streets, walks, or other adjacent occupied or used facilities without permission from Owner and authorities having jurisdiction. Provide alternate routes around closed or obstructed traffic ways if required by governing regulations.
7. Conduct demolition operations to prevent injury to people and damage to adjacent buildings and facilities to remain. Ensure safe passage of people around selective demolition area.
8. Use water and other suitable methods to limit the spread of dust and dirt. Comply with governing environmental protection regulations.
9. Clean adjacent streets, sidewalks, and paved areas of dust, dirt and debris caused by the demolition operations.
10. Promptly transport demolished materials off Owner's property and legally dispose of them.

NO.	REVISED	DATE

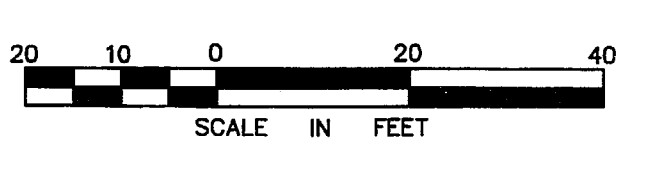


CERTIFICATION
CONSTRUCTION DOCUMENTS

CARDINAL PARK NATATORIUM

UNIVERSITY OF LOUISVILLE

Project: 03006
Drawn: BDH
Checked: DPM
Scale: 1"=20'
Issue Date: AUGUST 27, 2003
Revision:



CONSTRUCTION FENCING & DEMOLITION PLAN

C2.00