

EQUIPMENT

Item No.	Description	Size			Manf.	Catalog Number	Remarks
		W.	D.	H.			
E-1	TEAM LOCKER	18"	18"	80"	HOLLMAN	ATHLETIC	REF. 2A/A4.01 FOR INTERIOR; W/ KEY LOCK - BY OWNER/CONTRACTOR INSTALLED (B.O./C.I.)
E-2	PUBLIC LOCKER (1/2 LOCKER)	12"	12"	76"	HOLLMAN	MODEL B	INTERIOR OPTION FOUR W/ KEY LOCK; REF. 3A-C/A4.01 FOR ELEVATIONS - (B.O./C.I.)
E-3	COACHS LOCKER	18"	12"	76"	HOLLMAN	MODEL A	INTERIOR OPTION THREE W/ KEY LOCK; REF. 3B-D/A4.01 FOR ELEVATIONS - (B.O./C.I.)
E-4	LOCKER ROOM BENCH	5'-0"	9'-1/2"	--	RECREONICS	80-128	INSTALL PER MANUFACTURERS RECOMMENDATIONS
E-5	CEILING MOUNTED MONITOR MOUNT	--	--	--	DA-LITE	CMY-2128	MONITOR YOKE W/ VP-2 ACCESSORY; MOUNT TO HOLD FREE AND CLEAR OF LOCKERS
E-6	WALL MOUNTED MONITOR MOUNT	--	--	--	DA-LITE	WMY-2128	MONITOR YOKE W/ VP-2 ACCESSORY & D16 BRACKET; MOUNT TO HOLD MONITOR ABOVE 70"
E-7	SWIM SUIT DRYER	15"	15"	23"	SUITEMATE	--	INSTALL PER MANUFACTURERS RECOMMENDATIONS
E-8	STAINLESS STEEL ACCESS DOOR	16"	--	16"	MILCOR	STYLE (MS)	MOUNT IN COURSING, & BELOW COUNTER, OR ABOVE GRAB BAR WHERE APPLICABLE
E-9	WALL TALKERS	--	--	--	WALL TALKERS	MR-48-00	INSTALL PER MANUFACTURERS RECOMMENDATIONS OVER GYP. BOARD SUBSTRATE
E-10	DEFIBRILLATOR CABINET	15"	5"	15"	MODERN METAL	1805R2	STAINLESS STEEL
E-11	FIRE EXTINGUISHER CABINET	10"	6-1/4"	25"	POTTER ROEMER	7260	STAINLESS STEEL; FIRE EXTINGUISHER BY OWNER; 5 LOCATIONS NOTED
E-12	FIRE EXTINGUISHER MOUNTING BRACKET	--	--	--	POTTER ROEMER	3903	FIRE EXTINGUISHER BY OWNER; 3 LOCATIONS NOTED
E-13	RISER MOUNTED FIXED SEATING	--	--	--	IRWIN SEATING	MODEL 5000	SUPPORT BRACKETS TO BE GLAVANIZED WITH PAINTED TNEMC FINISH

TOILET ACCESSORIES

Item No.	Description	Size			Manf.	Catalog Number	Remarks
		W.	D.	H.			
T-1	TOILET TISSUE DISPENSER				BY OWNER		BY OWNER - CONTRACTOR INSTALLED
T-2	PAPER TOWEL DISPENSER				BY OWNER		BY OWNER - CONTRACTOR INSTALLED
T-3							
T-4	FRAMELESS MIRROR	F.V.		56"	--	--	FULL-WIDTH FRAMELESS MIRROR (FIELD VERIFY); MOUNTED 32" FINISH FLOOR TO BOTTOM
T-5	SURFACE-MOUNTED TOWEL PIN	2"	2"	2"	BOBRICK	B-76777	64" MOUNTING HEIGHT (FINISH FLOOR TO BOTTOM OF UNIT)
T-6	STAINLESS STEEL TOILET PARTITION	VAR.	VAR.	--	SEE SPECS.	SEE SPECS.	CEILING HUNG, W/ROBE HOOK
T-7	GRAB BAR	36"			BOBRICK	B-5806	MOUNTED 36" FINISH FLOOR TO CENTERLINE
T-8	GRAB BAR	40"			BOBRICK	B-5806	MOUNTED 36" FINISH FLOOR TO CENTERLINE
T-9	FRAMED MIRROR	24"		36"	BOBRICK	B-1658	S.S. FRAME, WELDED CORNERS, 38" ACCESSIBLE MOUNTING HEIGHT (BOTTOM OF UNIT)
T-10	FOLDING SHOWER SEAT				BOBRICK	B-5181	STAINLESS STEEL SEAT, MOUNTED 18" FINISH FLOOR TO SEAT
T-11	SHOWER GRAB BAR	15 7/8"	30 7/8"		BOBRICK	B-5861	TWO-WALL GRAB BAR, PEENED GRIP, MOUNTED 36" FINISH FLOOR TO CENTERLINE
T-12							
T-13	SHOWER CURTAIN				BY OWNER		
T-14	SHOWER CURTAIN ROD				BOBRICK	B-6107	MOUNT BETWEEN SHOWER AND DRESSING COMPARTMENTS
T-15	ROBE HOOK				BOBRICK	B-2116	CONCEALED MOUNTING, CENTER BELOW WALL SHELF
T-16	STAINLESS STEEL WALL SHELF	24"	8"	3"	BOBRICK	B-298	MOUNT ABOVE ROBE HOOK
T-17	STAINLESS STEEL URINAL SCREEN	VAR.	VAR.	--	SEE SPECS.	SEE SPECS.	WALL HUNG
T-18	LIQUID SHOWER GEL						BY OWNER - CONTRACTOR INSTALLED

NOTES:

- FIELD MEASURE BEFORE FABRICATION.
- REFER TO DRAWINGS FOR ALL CUSTOM MILLWORK DIMENSIONS
- ALL FITNESS EQUIPMENT, ICE MACHINES, TELEVISIONS AND VCR UNITS BY OWNER - SEE SPECIFICATIONS.
- ACCESSORY MODEL NUMBERS ARE FOR REFERENCE ONLY - SEE SPECIFICATIONS.

BROWNING DAY MULLINS DIERDORF ARCHITECTS

Browning Day Mullins Dierdorf Architects
Architecture
Landscape Architecture
Planning

334 North Senate Avenue
Indianapolis, Indiana 46204
P: 317.635.5000
F: 317.634.5400
E-Mail: jldstad@bdaym.com

Circle Design Group, Inc.
Mechanical Electrical Plumbing Engineers

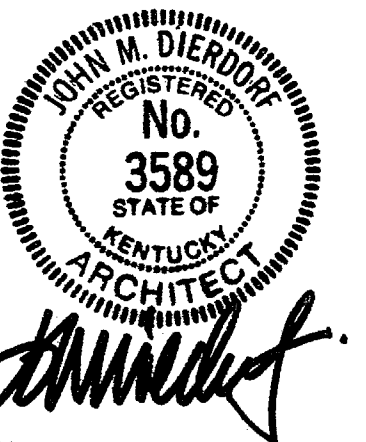
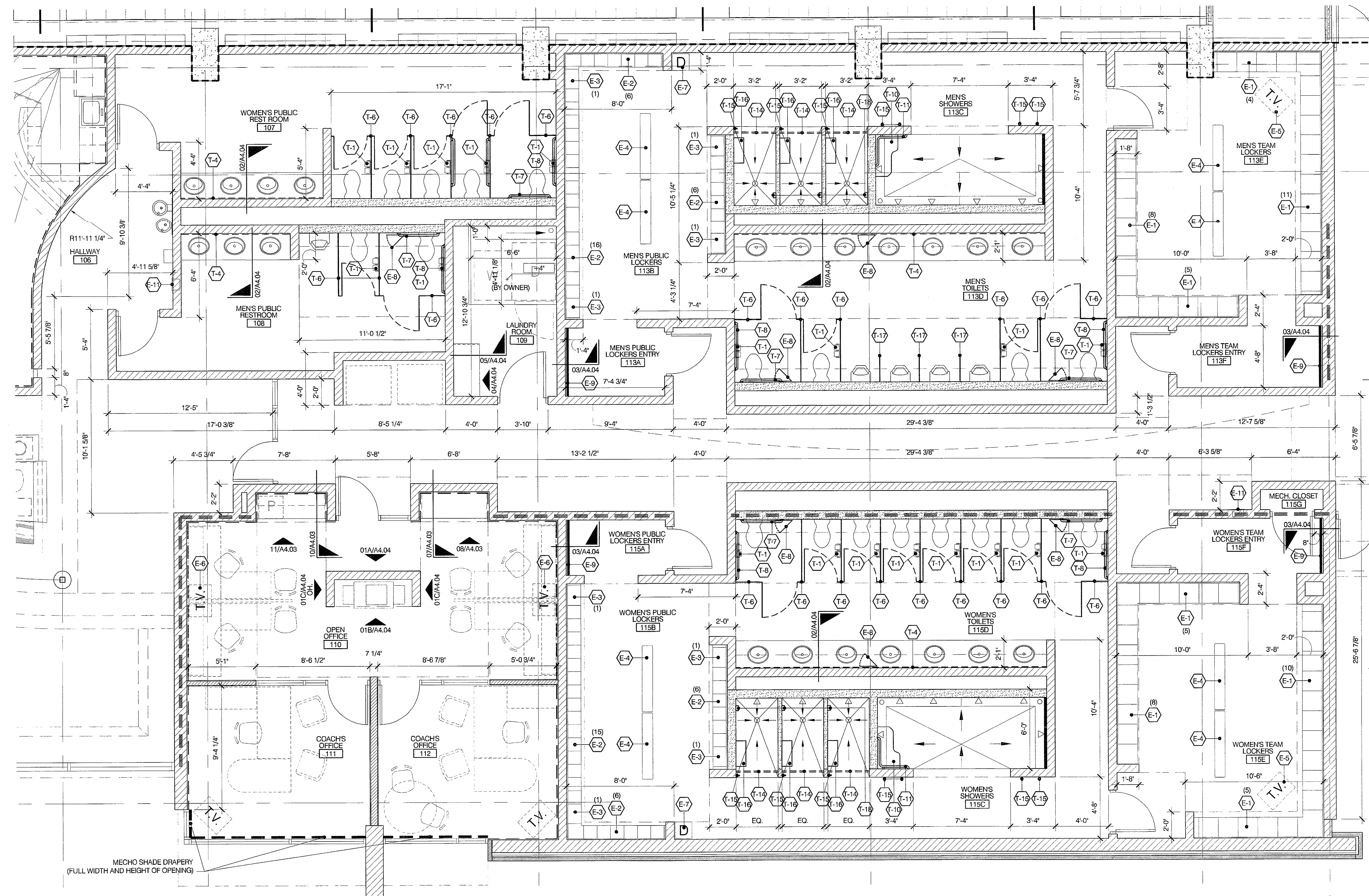
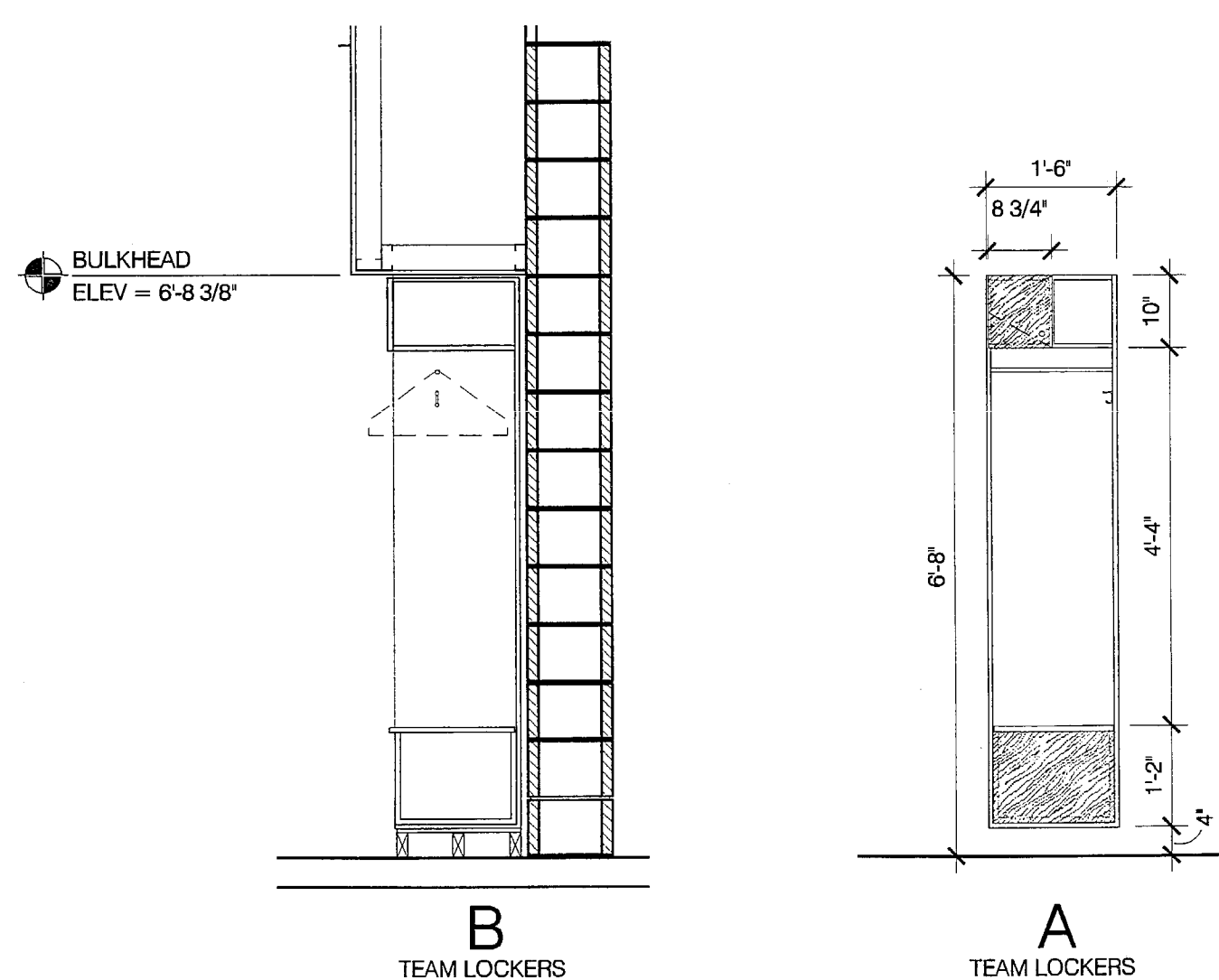
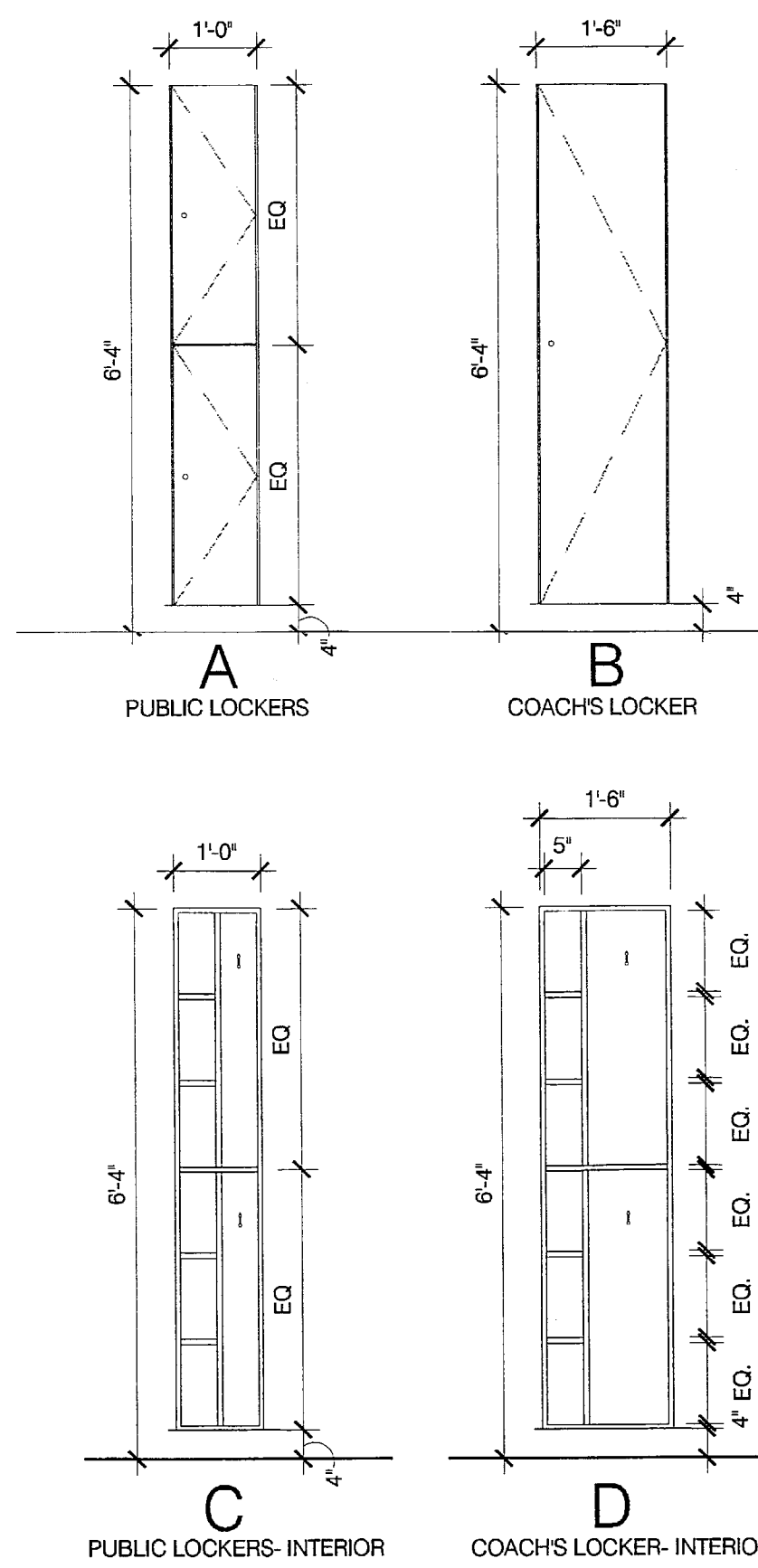
5510 South East Street, Suite F
Indianapolis, Indiana 46227
P: 317.781.6200
F: 317.781.6201
E-Mail: kerry@circledesigngroup.com

Lawson Elser Engineering Consultants
Structural Engineers

650 East Carmel Drive, Suite 150
Carmel, Indiana 46032
P: 317.574.9409
F: 317.574.9431
E-Mail: rlawson@lawsonel.com

Skees Engineering, Inc.
Civil Engineers

400 Blankenbaker Parkway, Suite 300
Louisville, KY 40243
P: 502.254.2344
F: 502.254.3008
E-Mail: dmckinnon@skees.com



CERTIFICATION
CONSTRUCTION DOCUMENTS

CARDINAL PARK NATATORIUM

UNIVERSITY OF LOUISVILLE

Project: 03006
Drawn: D. MCCLOSKEY
Checked: J. LINDSTAEDT
Scale:
Issue Date: AUGUST 27, 2003
Revision:

EQUIPMENT PLAN & SCHEDULES

A4.01