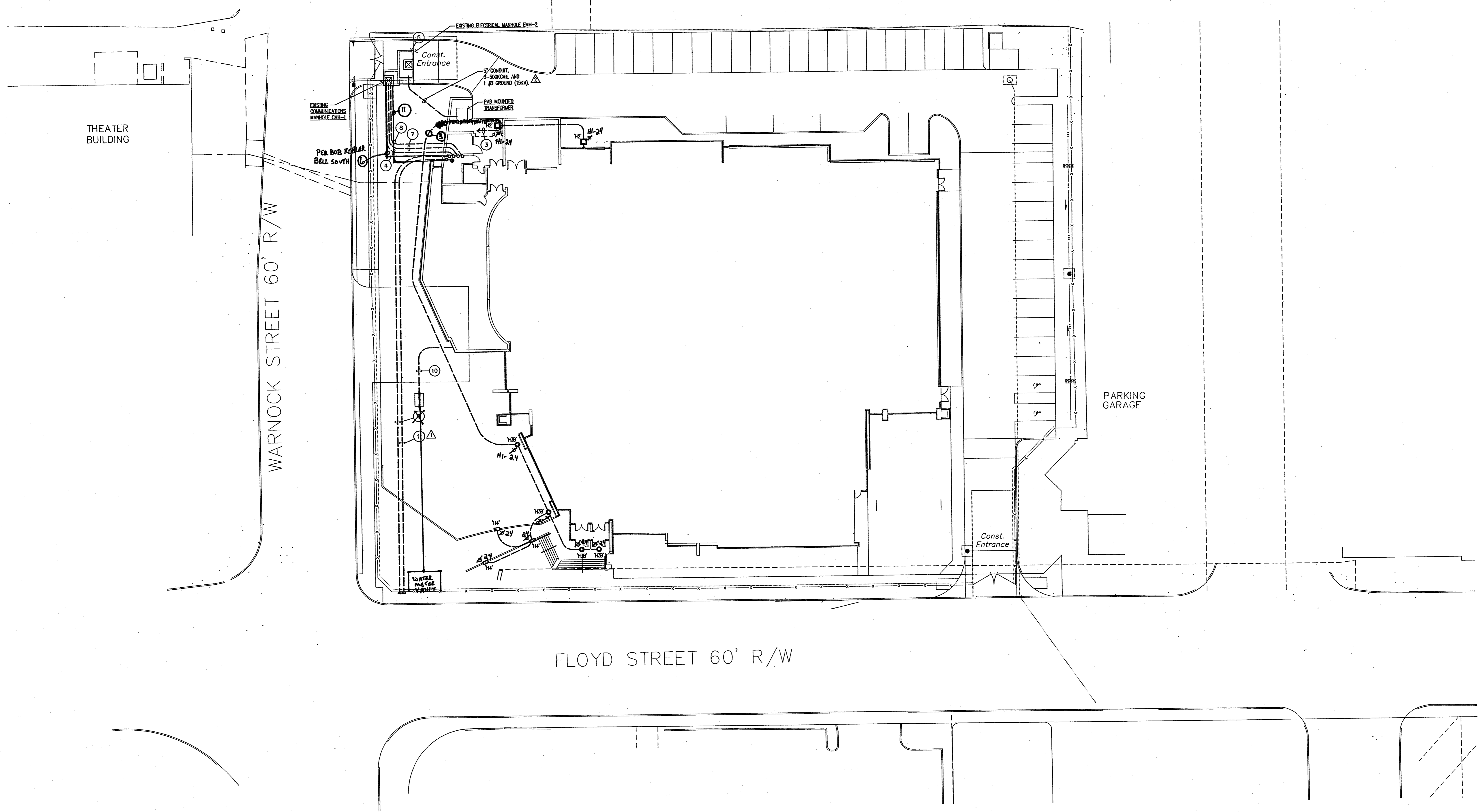


PLAN NOTES:

- ① NOT USED.
- ② NOT USED.
- ③ CONDUIT AND WIRING TO PANEL "H" VIA TIMELOCK IN ELECTRICAL ROOM. SEE SHEET E01 FOR TIMELOCK DETAILS.
- ④ INSTALL (4) 4" CONDUITS FOR DATA SERVICE. TWO (2) CONDUITS TO HAVE 1" INNER DUCTS IN EACH. ALL CONDUITS TO HAVE PULL STRINGS FOR FUTURE WIRING.
- ⑤ CONNECT NEW SERVICE TO SPARE TERMINALS ON EXISTING HIGH VOLTAGE SWITCH IN MANHOLE.
- ⑥ 4" CONDUIT WITH PULL STRING FOR TELEPHONE SERVICE. CAP AT PROPERTY LINE AND IDENTIFY LOCATION OF CONDUIT END.
- ⑦ 4" CONDUIT STUBBED INTO MANHOLE FROM MUF FOR FUTURE BUILDING MANAGEMENT SYSTEM.
- ⑧ 4" CONDUIT STUBBED INTO INTERFACE MANHOLE FROM SSP FOR FUTURE SECURITY INTERFACE.
- ⑨ NOT USED.
- ⑩ (2) 1" CONDUITS WITH PULL STRING TO WATER METER PIT. STUB THROUGH MECHANICAL ROOM FLOOR SLAB FOR FUTURE WIRING.
- ⑪ 2" CONDUIT WITH PULL STRING FOR CABLE TV SERVICE. CAP AT PROPERTY LINE AND IDENTIFY LOCATION OF CONDUIT END.

LOUISVILLE & NASHVILLE R.R. R/W



THIS SET IS A COMPILATION OF THE ORIGINAL BIDDING DOCUMENTS AND ADDENDA ONE THROUGH SEVEN. IT IS PROVIDED FOR CONVENIENCE ONLY. THE ARCHITECTS AND ENGINEERS SHALL NOT BE RESPONSIBLE FOR OMISSIONS FROM THE ORIGINAL BIDDING DOCUMENTS. REFER TO THE ORIGINAL BIDDING DOCUMENTS AND ADDENDA FOR RECORD DOCUMENTS AND CONTRACT DOCUMENTS.

CERTIFICATION
CONSTRUCTION DOCUMENTS

CARDINAL PARK NATATORIUM

UNIVERSITY OF LOUISVILLE

Project	03006
Drawn	LARRY STUFFLE
Checked	JEFF WYLE
Scale	1" = 20'-0"
Issue Date	AUGUST 28, 2003
Revisions	<ul style="list-style-type: none"> △ 10.7.03 ADDENDUM #2 △ 10.20.03 ADDENDUM #4 △ 03.30.04 TRAILER SET

SITE PLAN - ELECTRICAL
SCALE: 1" = 20'-0"

SITE PLAN ELECTRICAL

E101