

THIS SET IS A COMPILATION OF THE ORIGINAL BIDDING DOCUMENTS AND ADDENDA ONE THROUGH SEVEN. IT IS PROVIDED FOR CONVENIENCE ONLY. THE ARCHITECTS AND ENGINEERS SHALL NOT BE RESPONSIBLE FOR OMISSIONS FROM THE ORIGINAL BIDDING DOCUMENTS. REFER TO THE ORIGINAL BIDDING DOCUMENTS AND ADDENDA FOR RECORD DOCUMENTS AND CONTRACT DOCUMENTS.

CERTIFICATION
CONSTRUCTION DOCUMENTS

CARDINAL PARK NATATORIUM

UNIVERSITY OF LOUISVILLE

Project: 03006
Drawn: LARRY STUFFLE
Checked: JEFF WYLLIE
Scale: 1/8" = 1'-0"
Issue Date: AUGUST 28, 2003
Revised: 03.30.04 TRAILER SET

MECHANICAL FLOOR PLAN POWER

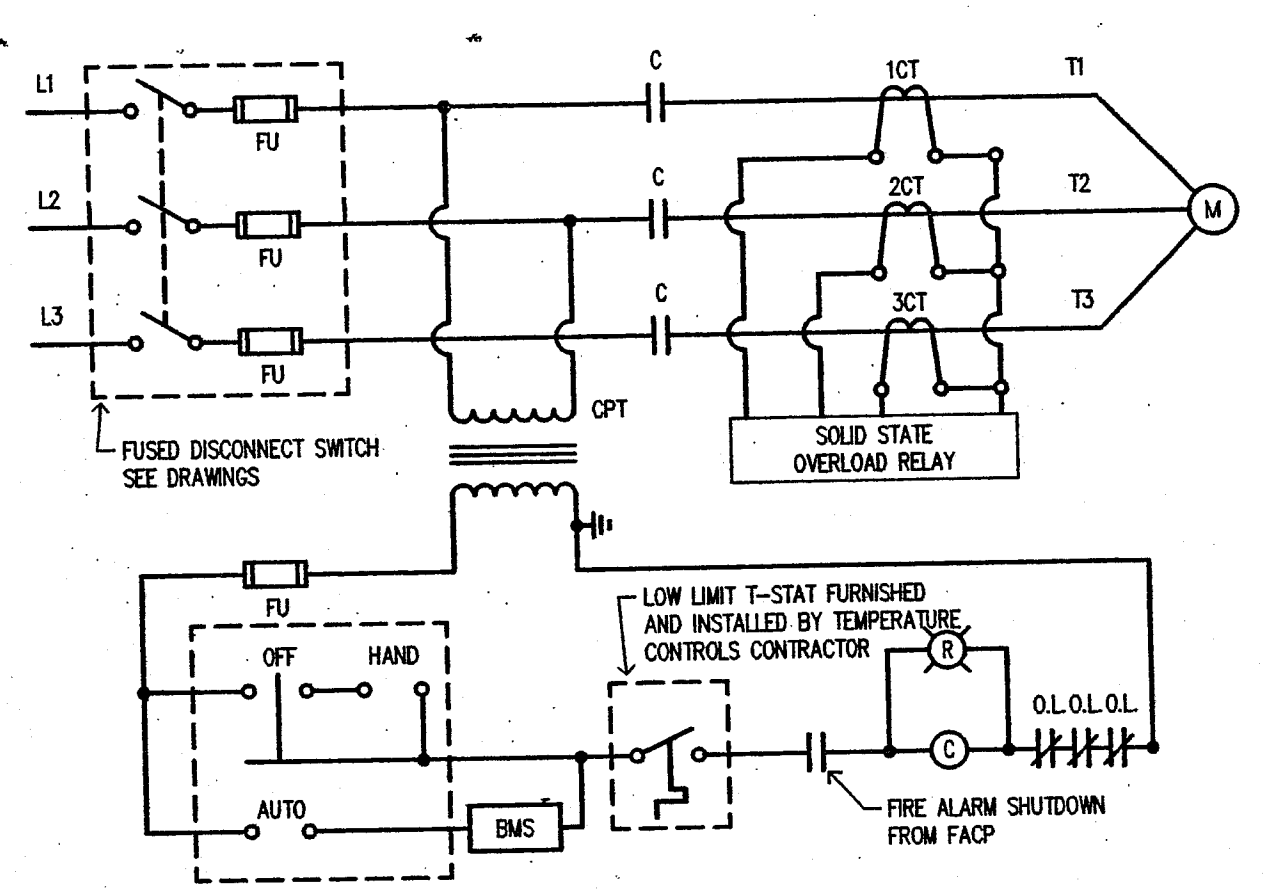
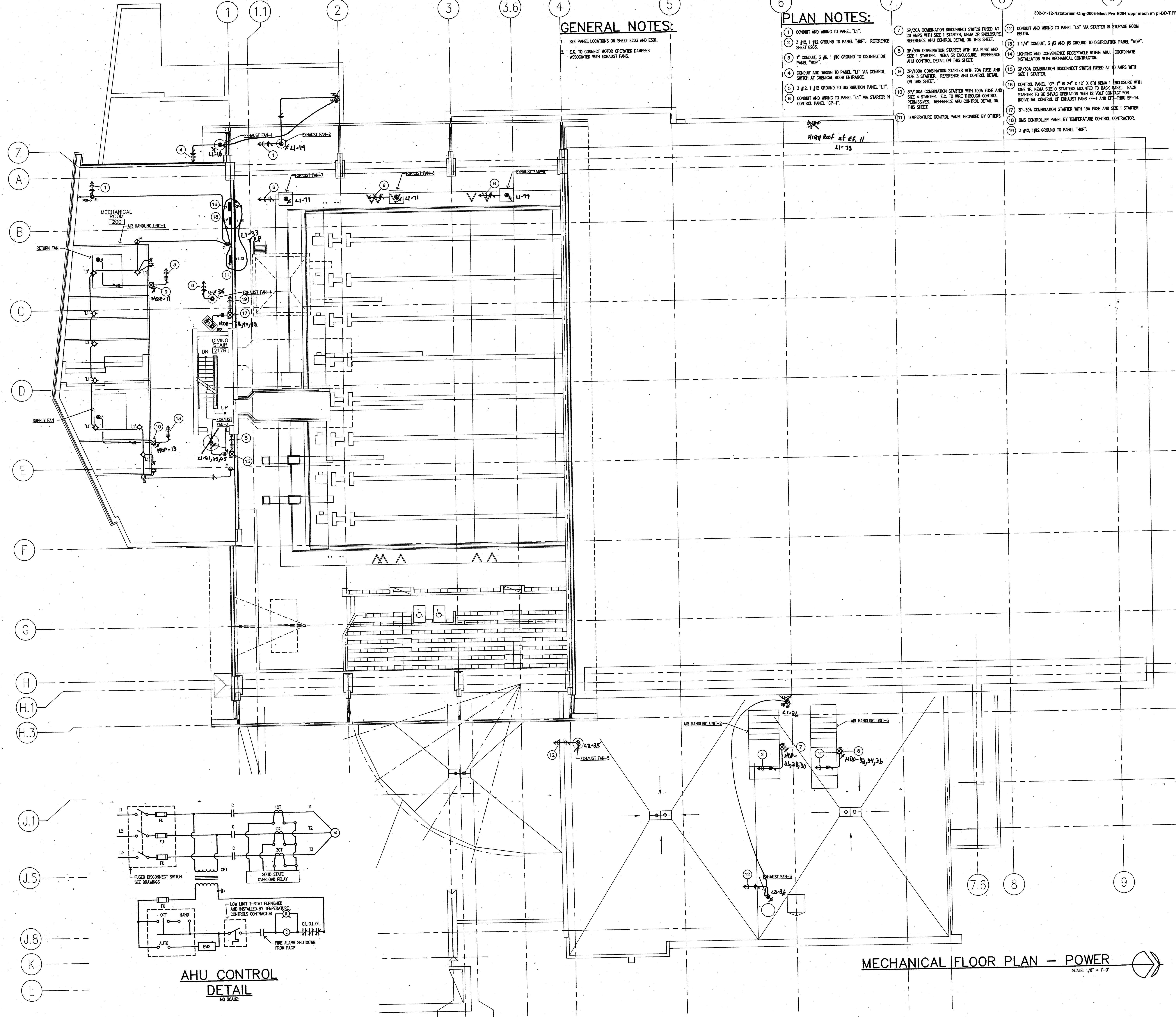
E204

GENERAL NOTES:

- SEE PANEL LOCATIONS ON SHEET E203 AND E201.
- E.C. TO CONNECT MOTOR OPERATED DAMPERS ASSOCIATED WITH EXHAUST FANS.

PLAN NOTES:

- CONDUIT AND WIRING TO PANEL "L1".
- 3 #12, 1 #12 GROUND TO PANEL "HDP". REFERENCE SHEET E203.
- 1" CONDUIT, 3 #6, 1 #10 GROUND TO DISTRIBUTION PANEL "HDP".
- CONDUIT AND WIRING TO PANEL "L1" MA CONTROL SWITCH AT CHEMICAL ROOM ENTRANCE.
- 3 #12, 1 #12 GROUND TO DISTRIBUTION PANEL "L1".
- CONDUIT AND WIRING TO PANEL "L1" MA STARTER IN CONTROL PANEL "CP-1".
- 3P/20A COMBINATION DISCONNECT SWITCH FUSED AT 20 AMPS WITH SIZE 1 STARTER, NEMA 3R ENCLOSURE. REFERENCE AHU CONTROL DETAIL ON THIS SHEET.
- 3P/20A COMBINATION STARTER WITH 10A FUSE AND SIZE 1 STARTER, NEMA 3R ENCLOSURE. REFERENCE AHU CONTROL DETAIL ON THIS SHEET.
- 3P/100A COMBINATION STARTER WITH 30A FUSE AND SIZE 3 STARTER. REFERENCE AHU CONTROL DETAIL ON THIS SHEET.
- 3P/100A COMBINATION STARTER WITH 100A FUSE AND SIZE 4 STARTER. E.C. TO WIRE THROUGH CONTROL PERMISSIBLES. REFERENCE AHU CONTROL DETAIL ON THIS SHEET.
- TEMPERATURE CONTROL PANEL PROVIDED BY OTHERS.
- CONDUIT AND WIRING TO PANEL "L2" MA STARTER IN STORAGE ROOM BELOW.
- 1 1/4" CONDUIT, 3 #5 AND #8 GROUND TO DISTRIBUTION PANEL "MOP".
- LIGHTING AND CONVENIENCE RECEPTACLE WITHIN AHU. COORDINATE INSTALLATION WITH MECHANICAL CONTRACTOR.
- 3P/20A COMBINATION DISCONNECT SWITCH FUSED AT 20 AMPS WITH SIZE 1 STARTER.
- CONTROL PANEL "CP-1" IS 24" X 12" X 8" NEMA 1 ENCLOSURE WITH NINE 1/2" NEMA SIZE 0 STARTERS MOUNTED TO BACK PANEL. EACH STARTER TO BE 24VAC OPERATION WITH 12 VOLT CONTACT FOR INDIVIDUAL CONTROL OF EXHAUST FANS EF-4 AND EF-7 THRU EF-14.
- 3P-30A COMBINATION STARTER WITH 15A FUSE AND SIZE 1 STARTER.
- BMS CONTROLLER PANEL BY TEMPERATURE CONTROL CONTRACTOR.
- 3 #12, 1#12 GROUND TO PANEL "HDP".



MECHANICAL FLOOR PLAN - POWER
SCALE: 1/8" = 1'-0"

G:\elect\03006\E204.dwg, 03/28/2004, 01:38:00 PM, Daryle Zybert