

Browning Day Mullins Dierdorf Inc
Architecture
Landscape Architecture
Planning

334 North Senate Avenue
Indianapolis, IN 46204
P: 317.635.9030
F: 317.634.5409
E-Mail: jindstaedt@bdmd.com

Circle Design Group, Inc.
MEP Engineer

5510 S. East Street, Suite F
Indianapolis, Indiana 46227
PHONE: 317.781.8200
FAX: 317.781.8201
E-MAIL: kerry@circledesigngroup.com

Lawson Eiser Engineering Consultants
Structural Engineers

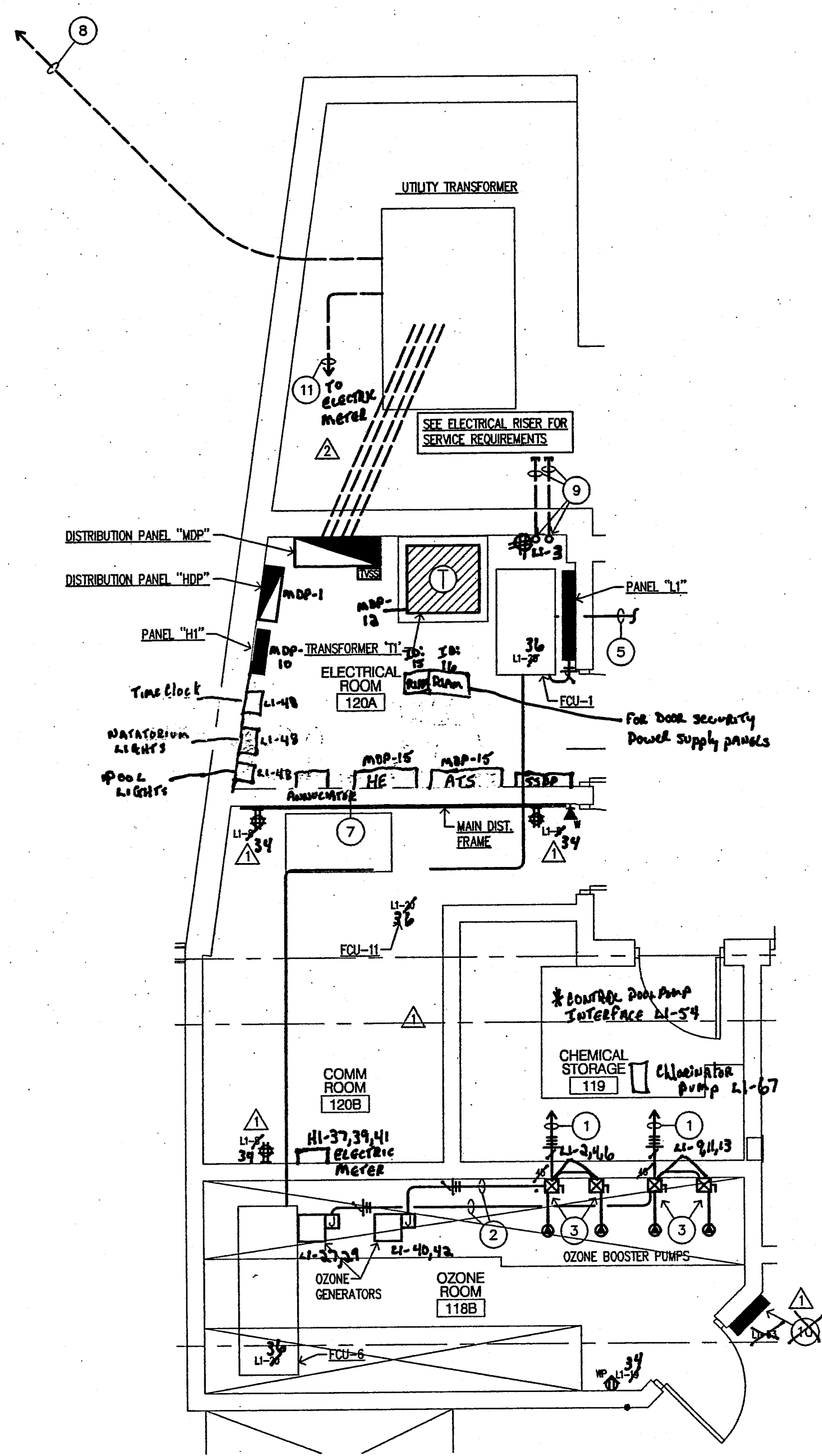
650 East Carmel Drive, Suite 310
Carmel, Indiana 46032
P: 317.674.8408
F: 317.674.8431
E-MAIL: mlawson@lawsoneiser.com

Skees Engineering Inc.
Civil Engineers

400 Blankenbaker Parkway, Suite 300
Louisville, KY 40243
P: 502.254.2344
F: 502.254.3008
E-MAIL: dmckinnon@skees.com

PLAN NOTES:

- ① 4 #10 AND 1 #10 GROUND TO PANEL 11.
- ② 3 #12 AND 1 #12 GROUND. PROVIDE INTERFACE BETWEEN BOOSTER PUMP STARTERS AND OZONE GENERATORS IN ACCORDANCE WITH MANUFACTURER'S WIRING DIAGRAMS.
- ③ 3P/30A, 208V COMBINATION FUSED DISCONNECT SWITCH FUSED AT 30 AMPS WITH SIZE 1 STARTER.
- ④ 30 AMP, 4 POLE LIGHTING CONTACTOR FOR UNDERWATER LIGHTING CONTROL. CONTACTOR TO BE 120V ELECTRICALLY OPERATED, ELECTRICALLY HELD CONTACTS IN A NEMA 1 ENCLOSURE. REFERENCE SQUARE D #J4400.
- ⑤ CIRCUIT CONTINUED ON SHEET E203.
- ⑥ 30 AMP, 12 POLE LIGHTING CONTACTOR FOR NATATORIUM LIGHTING CONTROL. CONTACTOR TO BE 120V ELECTRICALLY OPERATED, ELECTRICALLY HELD CONTACTS IN A NEMA 1 ENCLOSURE. REFERENCE SQUARE D #J4200.
- ⑦ 8PST ASTRONOMIC TIMELOCK FOR EXTERIOR LIGHTING CONTROL. REFERENCE SHEET E101.
- ⑧ 3" CONDUIT, 3-CONDUCTOR AND 1 #3 GROUND (15 KV) PRIMARY SERVICE FROM ELECTRIC MANHOLE. REFERENCE SHEET E101.
- ⑨ STUB TWO 3/4" CONDUITS TO A POINT 6'-0" FROM EXTERIOR WALL AND CAP ACCORDINGLY. STUB THROUGH ELECTRICAL ROOM SLAB AND PLUG AS REQUIRED.
- ⑩ BMS INTERFACE PANEL FURNISHED BY OTHERS.
- ⑪ 3/4" CONDUIT AND RS322 INTERFACE TO BMS INTERFACE PANEL FOR METERING.



ENLARGED ROOM PLAN - ELECTRICAL
SCALE: 1/4" = 1'-0"

THIS SET IS A COMPILATION OF THE ORIGINAL BIDDING DOCUMENTS AND ADDENDA ONE THROUGH SEVEN. IT IS PROVIDED FOR CONVENIENCE ONLY. THE ARCHITECTS AND ENGINEERS SHALL NOT BE RESPONSIBLE FOR OMISSIONS FROM THE ORIGINAL BIDDING DOCUMENTS. REFER TO THE ORIGINAL BIDDING DOCUMENTS AND ADDENDA FOR RECORD DOCUMENTS AND CONTRACT DOCUMENTS.

CERTIFICATION
CONSTRUCTION DOCUMENTS

CARDINAL PARK NATATORIUM

UNIVERSITY OF LOUISVILLE

Project: 03006
 Drawn: LARRY STUFFLE
 Checked: JEFF WYLIE
 Scale: 1/4" = 1'-0"
 Issue Date: AUGUST 28, 2003
 Revisions:
 10.7.03 ADDENDUM #2
 10.20.03 ADDENDUM #4
 03.30.04 TRAILER SET

ENLARGED ROOM PLAN ELECTRICAL
E301