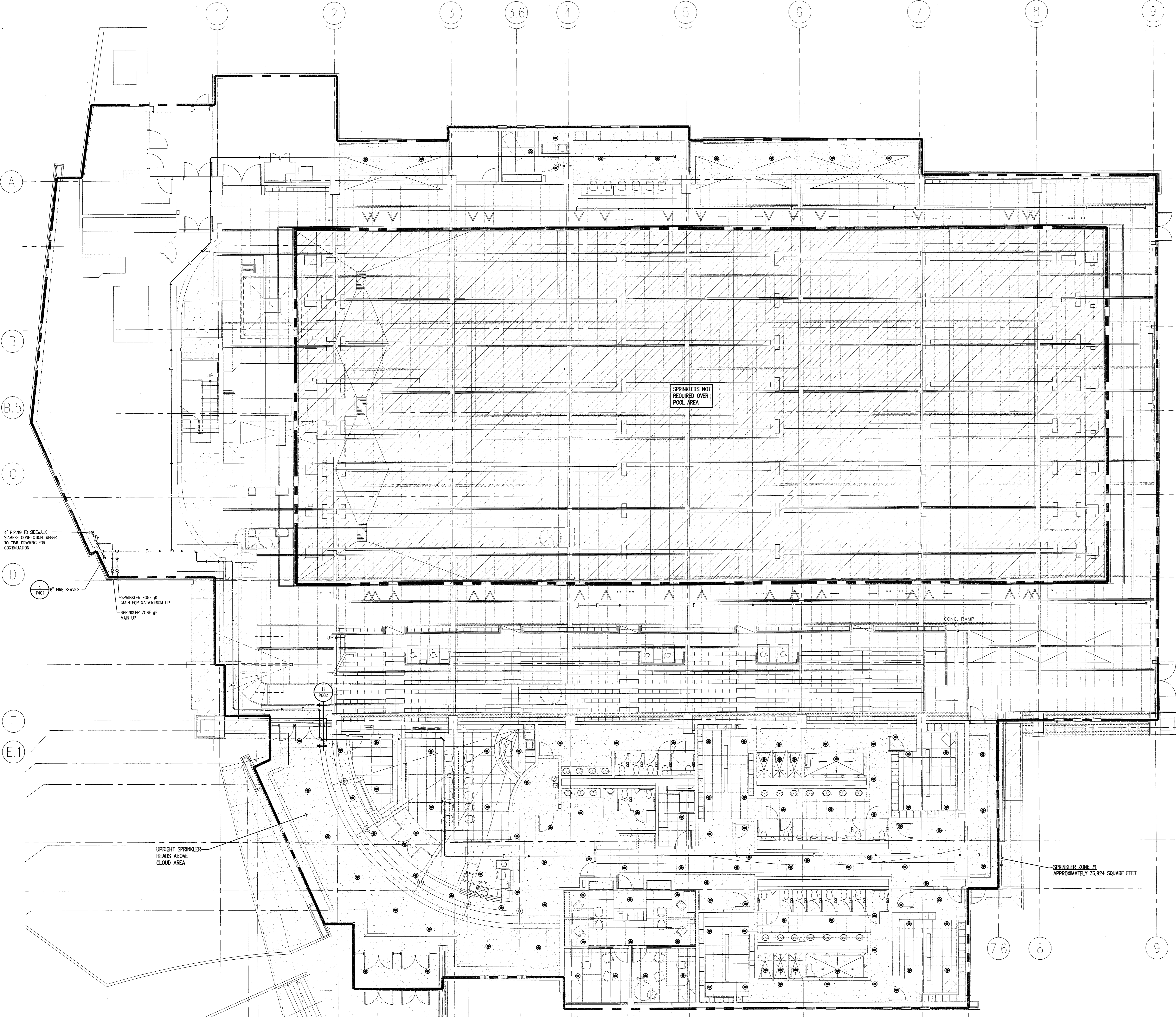


GENERAL NOTE:

1. THE BUILDING SHALL BE FULLY SPRINKLED BY MEANS OF AN AUTOMATIC WET SPRINKLER SYSTEM. DENSITY COVERAGES ARE AS FOLLOWS:

HAZARD	DENSITY	AREA	HEAD
LIGHT	.01	1500SF	165"
ORD CP I	.15	1500SF	165"
ORD CP II	.20	1500SF	165"
2. COORDINATE PIPE ROUTE WITH ALL OTHER TRADES.
3. SPRINKLER MAIN SHOWN ON DRAWINGS IS A SUGGESTION METHOD OF ROUTING. FINAL ROUTING SHALL BE FULLY COORDINATED WITH ALL OTHER TRADES.
4. COORDINATE ALL TAMPER SWITCHES, FLOW SWITCHES, ALARM VALVES, ETC. WITH ELECTRICAL CONTRACTOR.
5. ANY APPURTENANCES OR ADDITIONAL DEVICES NOT SHOWN SHALL BE THE RESPONSIBILITY OF THE CONTRACTOR. ANY APPURTENANCES/DEVICES OMITTED ON THESE DRAWINGS ARE NOT INTENTIONAL. NOTIFY ENGINEER OF ANY ADDITIONAL DEVICES REQUIRED.
6. THE AUTOMATIC WET SPRINKLER SYSTEM SHALL BE INSTALLED AS REQUIRED BY NFPA 13.
7. SPRINKLER HEAD LAYOUT SHALL BE AS REQUIRED BY NFPA 13. LAYOUT IN CEILING GRIDS SHALL BE COORDINATED WITH DIFFUSERS, LIGHTS AND ALL OTHER DEVICES IN THE CEILING.
8. WHERE SPRINKLER HEADS ARE SHOWN ON THIS DRAWING, THERE SHALL BE NO DEVIATION OF SPRINKLER HEAD LAYOUT UNLESS APPROVED IN WRITING BY ENGINEER.
9. ALL PIPING AND FITTINGS IN NATATORIUM/POOL ENVIRONMENT TO BE SCHEDULE 40 GALVANIZED STEEL.
10. CONCEALED STEEL HEAD TO BE UTILIZED IN ALL FINISH SPACES.



4" PIPING TO SIDEWALK SAME-SE CONNECTION REFER TO CIVIL DRAWINGS FOR CONTINUATION

6" FIRE SERVICE

SPRINKLER ZONE #1 MAIN FOR NATATORIUM UP

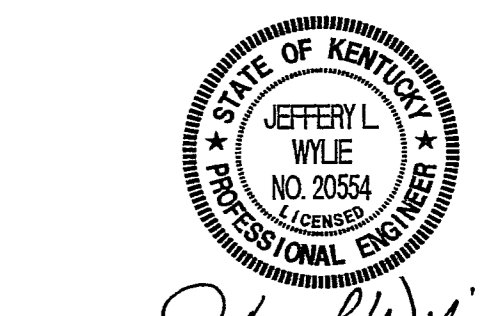
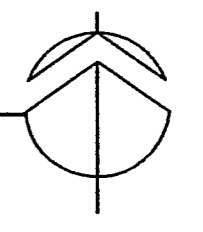
SPRINKLER ZONE #2 MAIN UP

SPRINKLERS NOT REQUIRED OVER POOL AREA

SPRINKLER ZONE #1 APPROXIMATELY 36,924 SQUARE FEET

UPRIGHT SPRINKLER HEADS ABOVE CLOUD AREA

MAIN LEVEL FLOOR PLAN - FIRE PROTECTION
SCALE: 1/8" = 1'-0"



CERTIFICATION

CONSTRUCTION DOCUMENTS

CARDINAL PARK NATATORIUM

UNIVERSITY OF LOUISVILLE

Project: 03006
 Drawn: TERRY GUNN
 Checked: GREG CHAMPION
 Scale: 1/8" = 1'-0"
 Issue Date: AUGUST 28, 2003
 Revision:

MAIN LEVEL FLOOR PLAN - FIRE PROTECTION
F201