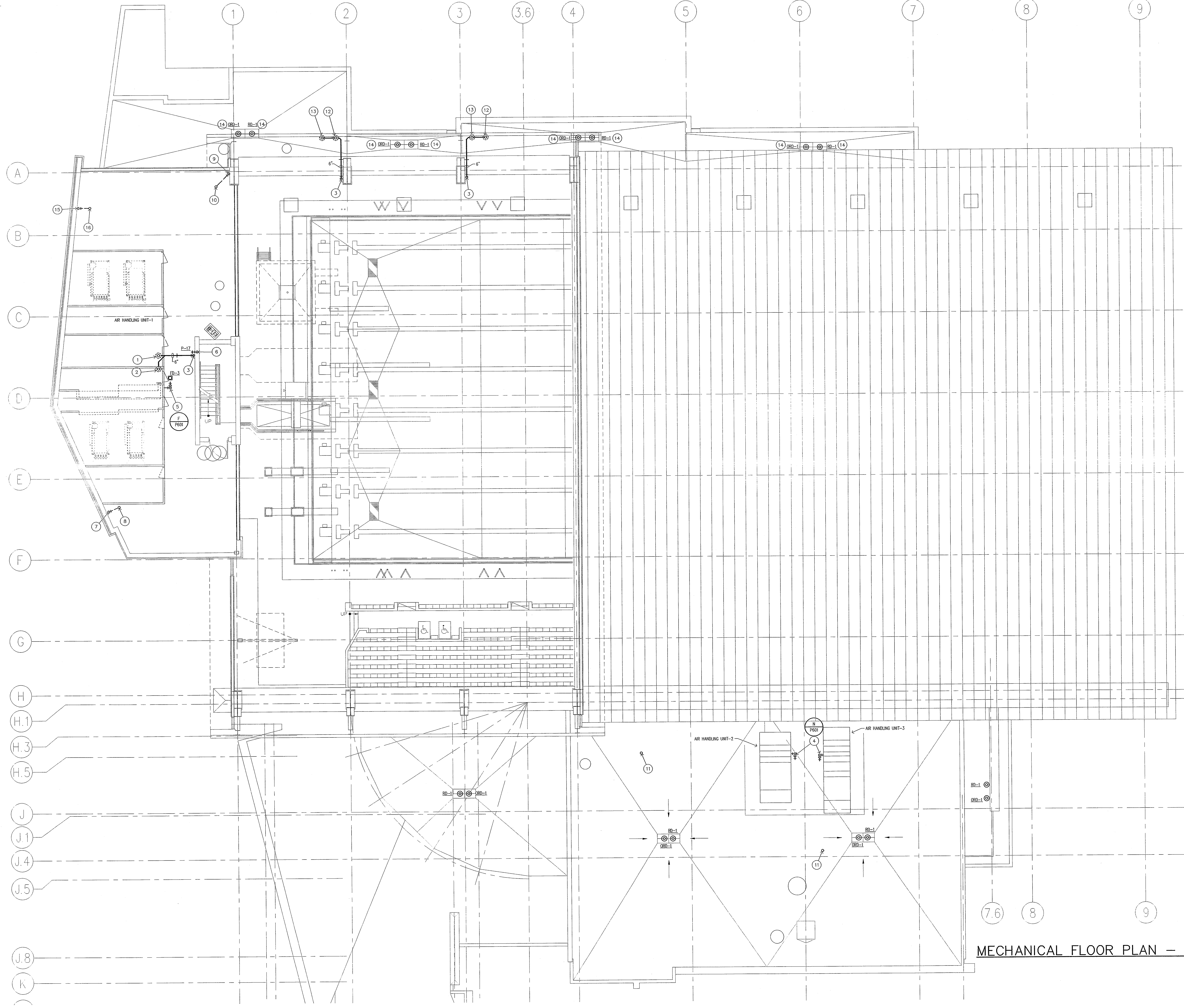
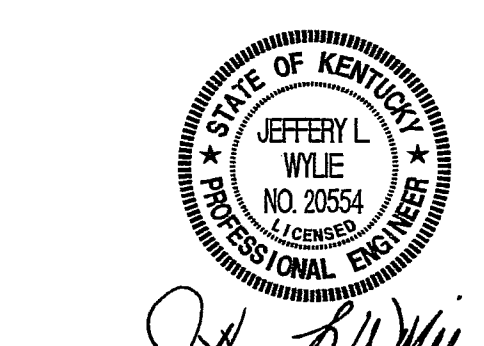


PLAN NOTES:

- 1 6" FROM ROOF DRAIN ABOVE.
- 2 6" FROM OVERFLOW ROOF DRAIN ABOVE.
- 3 6" ROOF CONDUCTOR.
- 4 CONNECT CONDENSATE DRAIN PIPING WITH 1" TRAP ASSEMBLY TO ROOFTOP UNIT. SIZE WATER AND STATIC SEAL PER MANUFACTURER'S RECOMMENDATIONS AND UPON FINAL BALANCING OF UNIT. COORDINATE EXACT WATER AND STATIC SEAL SIZES WITH BALANCING CONTRACTOR.
- 5 CONNECT CONDENSATE DRAIN PIPING WITH 1" TRAP ASSEMBLY TO AIR HANDLING UNIT. SIZE WATER AND STATIC SEAL PER MANUFACTURER'S RECOMMENDATIONS AND UPON FINAL BALANCING OF UNIT. COORDINATE EXACT WATER AND STATIC SEAL SIZES WITH BALANCING CONTRACTOR.
- 6 3/4" COLD WATER FROM BELOW 6" ROOF CONDUCTOR.
- 7 4" VENT FROM BELOW.
- 8 4" VENT UP. 4" VENT THRU ROOF.
- 9 1 1/2" VENT FROM BELOW.
- 10 1 1/2" VENT UP. 3" VENT UP THRU ROOF.
- 11 4" PLUMBING VENT.
- 12 6" FROM ROOF DRAIN IN HIGH ROOF.
- 13 6" FROM OVERFLOW ROOF DRAIN IN HIGH ROOF.
- 14 ROOF DRAIN AND OVER FLOW ROOF DRAIN LOCATED ON ROOF BELOW.
- 15 3" VENT FROM BELOW.
- 16 3" VENT UP THRU ROOF.



MECHANICAL FLOOR PLAN - PLUMBING
SCALE: 1/8" = 1'-0"



CONSTRUCTION DOCUMENTS

CARDINAL PARK NATATORIUM

UNIVERSITY OF LOUISVILLE

Project: 03006
 Drawn: TERRY GUNN
 Checked: GREG CHAMPION
 Scale: 1/8" = 1'-0"
 Issue Date: AUGUST 28, 2003
 Revision:

MECHANICAL FLOOR PLAN - PLUMBING

P203