

Browning Day Mullins Dierdorf Inc.
Architecture
Landscape Architecture
Planning

334 North Senate Avenue
Indianapolis, IN 46204
P: 317.635.5030
F: 317.634.5409
E-Mail: jindstaedt@bmdm.com

Circle Design Group, Inc.
MEP Engineer

5510 S. East Street, Suite F
Indianapolis, Indiana 46227
PHONE: 317.781.6200
FAX: 317.781.6201
E-MAIL: kerry@circledesigngroup.com

Lawson Elser Engineering Consultants
Structural Engineers

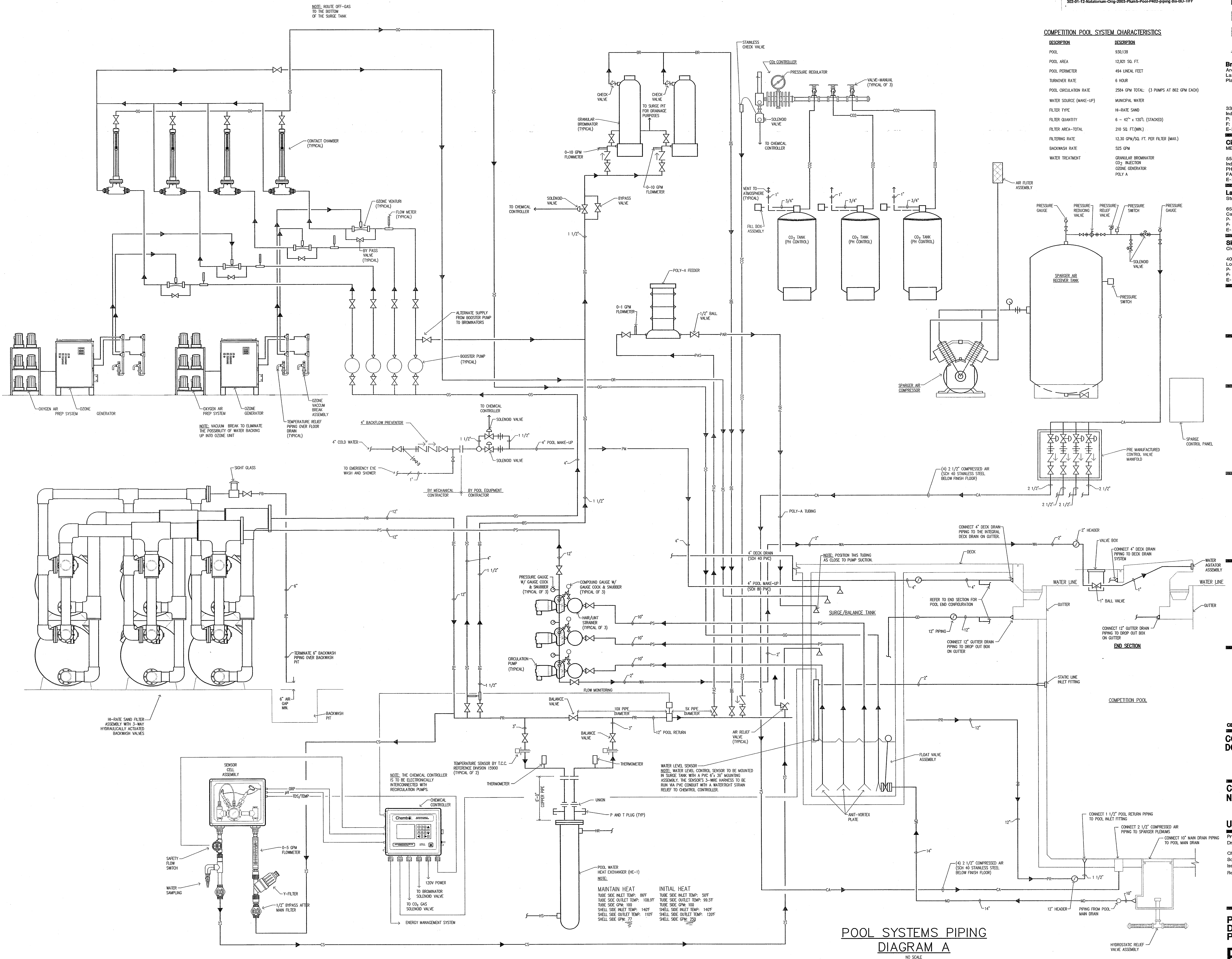
650 East Carmel Drive, Suite 310
Carmel, Indiana 46032
P: 317.674.9409
F: 317.574.9431
E-MAIL: miawson@lawsonelser.com

Skoos Engineering Inc.
Civil Engineers

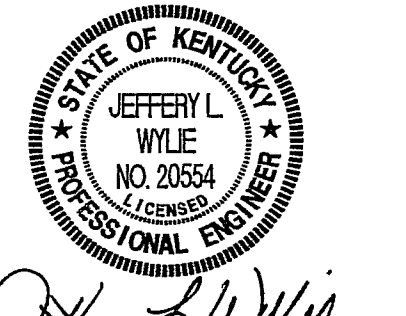
400 Blankenbaker Parkway, Suite 300
Louisville, KY 40243
P: 502.254.2344
F: 502.254.3008
E-MAIL: dmckinnon@skoos.com

COMPETITION POOL SYSTEM CHARACTERISTICS

DESCRIPTION	DESCRIPTION
POOL	930,138
POOL AREA	12,921 SQ. FT.
POOL PERIMETER	494 LINEAL FEET
TURNOVER RATE	6 HOUR
POOL CIRCULATION RATE	2584 GPM TOTAL (3 PUMPS AT 862 GPM EACH)
WATER SOURCE (MAKE-UP)	MUNICIPAL WATER
FILTER TYPE	M-RATE SAND
FILTER QUANTITY	6 - 42" x 120" (STACKED)
FILTER AREA-TOTAL	210 SQ. FT.(MIN.)
FILTERING RATE	12.30 GPM/SQ. FT. PER FILTER (MAX.)
BACKWASH RATE	525 GPM
WATER TREATMENT	GRANULAR BROMINATOR CO ₂ INJECTION OZONE GENERATOR POLY-A



**POOL SYSTEMS PIPING
DIAGRAM A**
NO SCALE



CERTIFICATION
CONSTRUCTION DOCUMENTS

**CARDINAL PARK
NATATORIUM**

UNIVERSITY OF LOUISVILLE

Project: 03030
Drawn: TERRY GANN
Checked: GREG CHAMPION
Scale: AS NOTED
Issue Date: AUGUST 28, 2003
Revision:

**POOL SYSTEMS PIPING
DIAGRAM -
PLUMBING**

P402