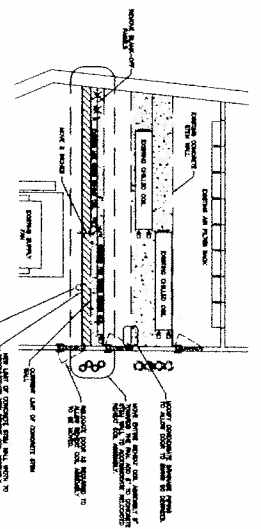


ENLARGED MECHANICAL ROOM - SECOND FLOOR
 SCALE: 1/4" = 1'-0"
 ARCHITECT: STODOLSKY, MAYER, AND ASSOCIATES

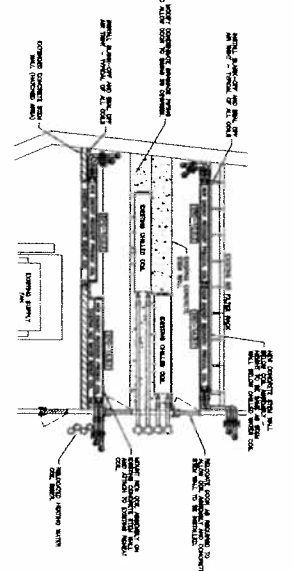


PARTIAL AIR HANDLING UNIT DETAIL - DEMOLITION/MODIFICATION
 SCALE: 1/2" = 1'-0"
 ARCHITECT: STODOLSKY, MAYER, AND ASSOCIATES

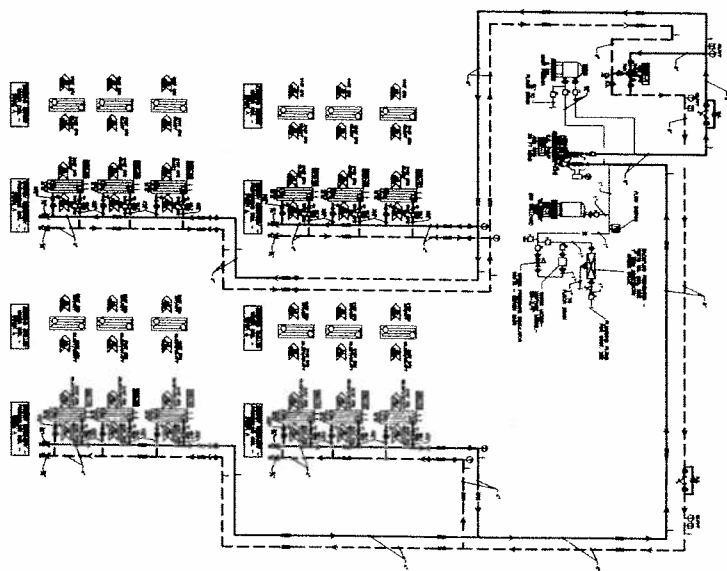
RIGHT AROUND HEAT LOOP COILS

NO.	DESCRIPTION	UNIT	TYPE	LOCATION
1	RIGHT AROUND HEAT LOOP COIL	1	COIL	MECH. ROOM
2	RIGHT AROUND HEAT LOOP COIL	2	COIL	MECH. ROOM
3	RIGHT AROUND HEAT LOOP COIL	3	COIL	MECH. ROOM
4	RIGHT AROUND HEAT LOOP COIL	4	COIL	MECH. ROOM
5	RIGHT AROUND HEAT LOOP COIL	5	COIL	MECH. ROOM
6	RIGHT AROUND HEAT LOOP COIL	6	COIL	MECH. ROOM
7	RIGHT AROUND HEAT LOOP COIL	7	COIL	MECH. ROOM
8	RIGHT AROUND HEAT LOOP COIL	8	COIL	MECH. ROOM
9	RIGHT AROUND HEAT LOOP COIL	9	COIL	MECH. ROOM
10	RIGHT AROUND HEAT LOOP COIL	10	COIL	MECH. ROOM

ENERGY RECOVERY PUMPS
 SCALE: 1/2" = 1'-0"
 ARCHITECT: STODOLSKY, MAYER, AND ASSOCIATES



PARTIAL AIR HANDLING UNIT DETAIL - NEW WORK
 SCALE: 1/2" = 1'-0"
 ARCHITECT: STODOLSKY, MAYER, AND ASSOCIATES

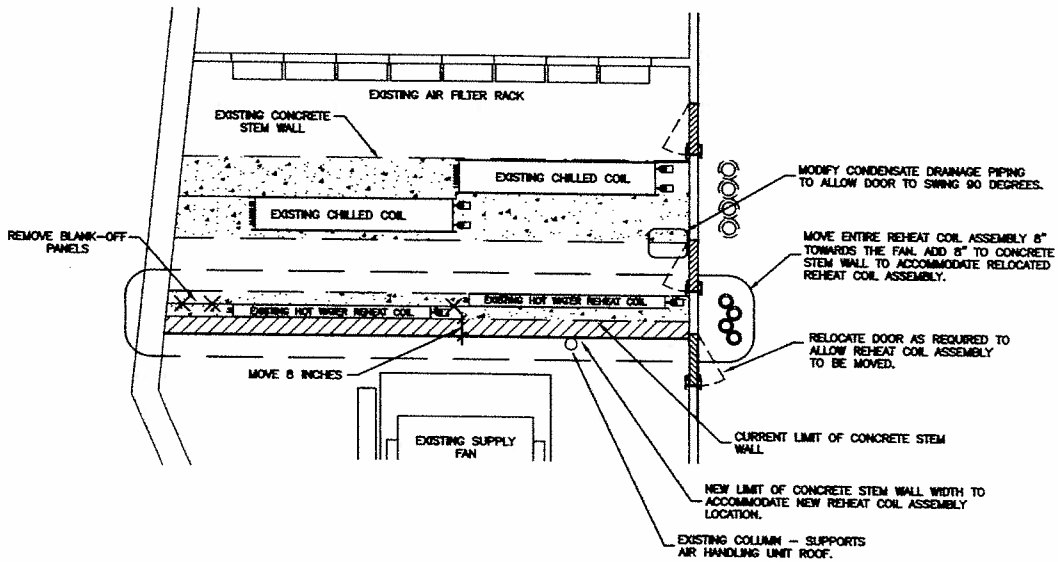


ENERGY RECOVERY FLOW DIAGRAM
 SCALE: AS SHOWN

Stodolsky, Mayer, and Associates, Inc.
 Consulting Engineers, Inc.
 Wright Neighborhood
 U of L / SIEMENS
 PERFORMANCE CONTRACT
 University of Louisville
 Louisville, Kentucky

M12-1

B



PARTIAL AIR HANDLING UNIT DETAIL – DEMOLITION/MODIFICATION

SCALE 1/4" = 1'-0"

(WRIGHT NATATORIUM)

RUN AROUND HEAT LOOP COILS																		
SYMBOL	MFR.	MODEL NO.	SERVICE	ROWS	F.P.L.	DIMENSIONS		TOT. CAP.	NORMAL OPERATION									
						WIDTH	HEIGHT		MBH	CFM	VEL. FPM	A.P.D. IN W.G.	E.A.T. F.	L.A.T. F.	W.P.D. GPM	E.W.T. FT.	L.W.T. FT.	REMARKS
ERC-1			AH-NATATORIUM	4	12	90	30	794.89	55,000	489	0.41	82.0	71.4	400.0	6.76	64.63	66.60	1,2,4
ERC-2			AH-NATATORIUM	4	12	90	30	792.37	55,000	489	0.3	80.0	64.64	400.0	6.76	66.60	64.63	1,2,4

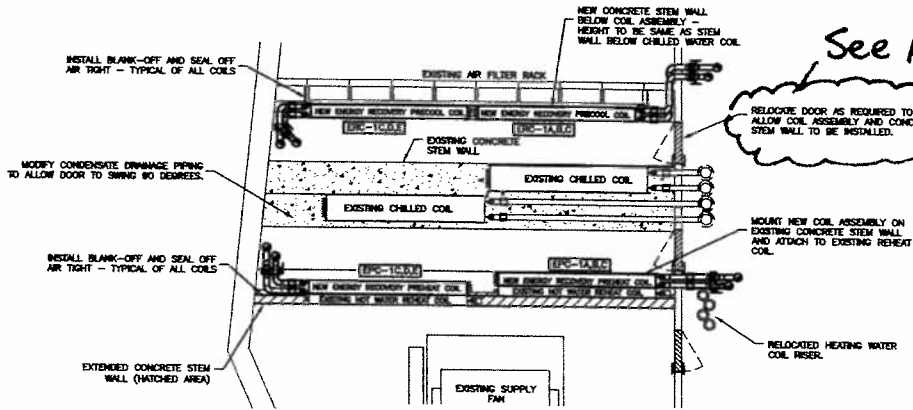
REMARKS

- 1 - 0.0075" THICK ALUMINUM PLATE FINS, 0.025" THICK COPPER TUBES, STAINLESS STEEL (TYPE 30-4) FRAME/DRUM, COPPER HEADER, HERBRITE COATING (BAKED ON).
- 2 - ARRANGEMENT OF COILS IS 3 (STACKED HIGH) x 2 (WIDE) NOT STAGGERED.
- 3 - ARRANGEMENT OF COILS IS 3 (STACKED HIGH) x 2 (WIDE) STAGGERED AS REQUIRED ON SITE.
- 4 - SOME ACCEPTABLE MANUFACTURERS: HESTONRAFT, INC. TRANE, AEROFIN.
- 5 - COIL CAN NOT BE MORE THAN 4" IN DEPTH.

ENERGY RECOVERY PUMPS																		
SYMBOL	MFR.	SERIES	TYPE	SIZE	IMPELLER SIZE	GPM	HEAD F.T.	BHP	EFFICIENCY %	SHUT-OFF HEAD FT.	MAX GPM	MIN REC FLOW	MOTOR				SERVICE	REMARKS
													HP	RPM	PH	VOLTS		
ERP-1	BELL & GOSSETT	1510	BANK MOUNTED END SUCTION	3BC	7.125	400	35	5.08	71.53	47	534	150	7.5	1750	3	480	RUNAROUND SYSTEM	

MISCELLANEOUS EQUIPMENT

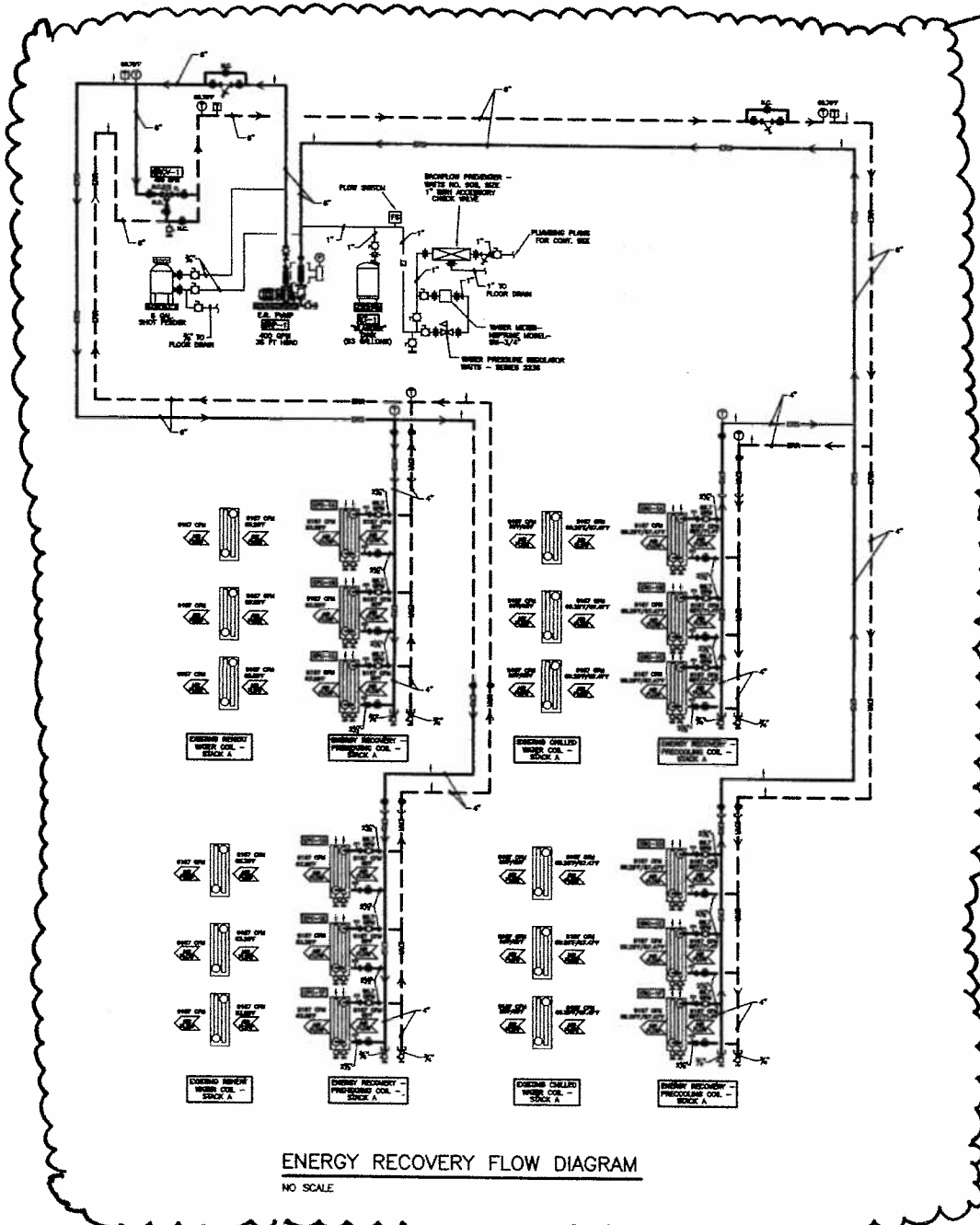
ET-1: BELL & GOSSETT, B-LA SERIES, TANK VOLUME: 53 GALLONS, ACCEPTANCE VOLUME: 27 GALLONS.



See Addendum 5: "Rever. Door Swing to swing out of the AHU."

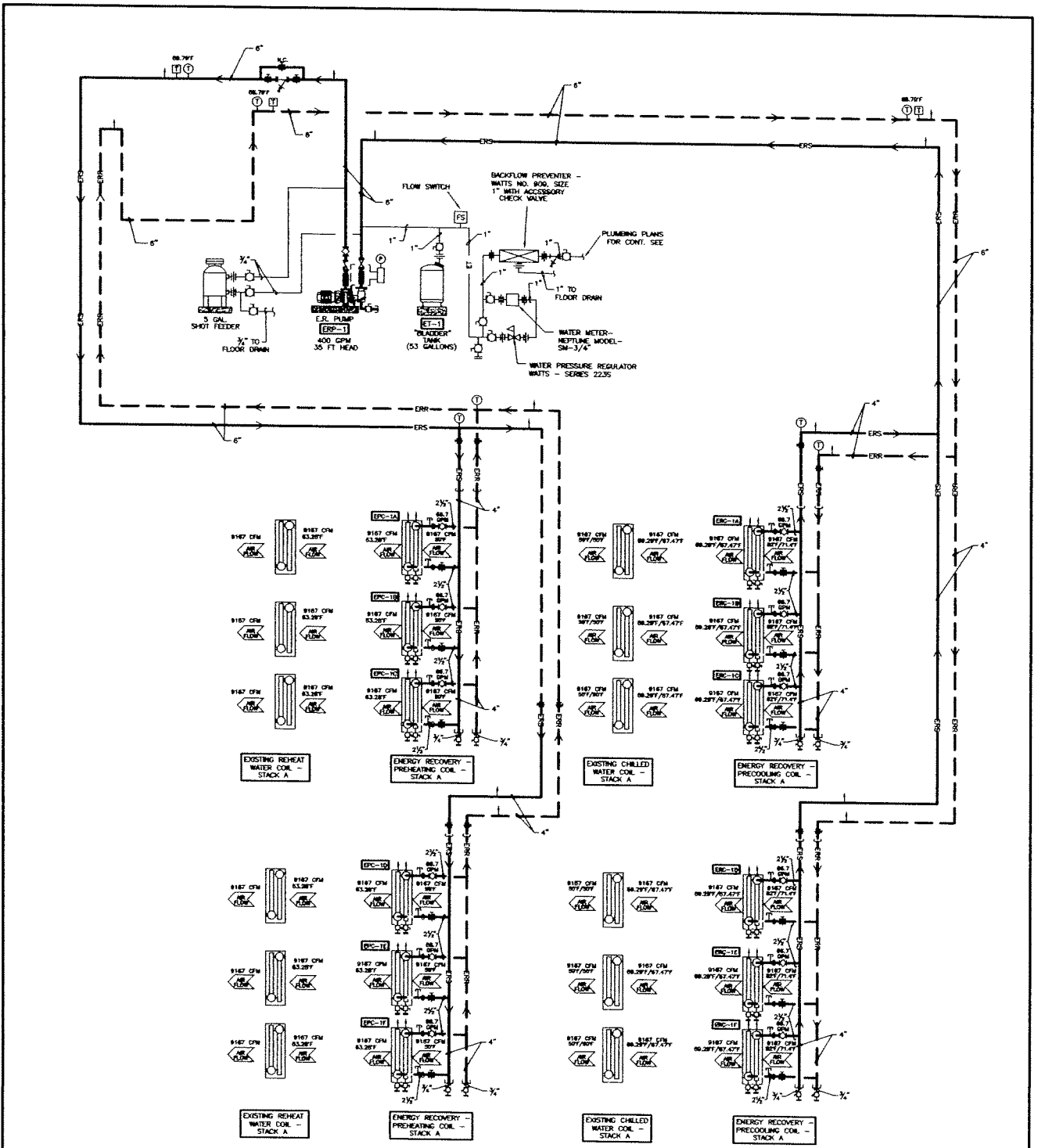
PARTIAL AIR HANDLING UNIT DETAIL - NEW WORK
SCALE 1/4" = 1'-0" (WRIGHT HAZARDORUM)

NOTE: SEAL OFF AIR TIGHT ALL AIR HANDLING UNIT PENETRATIONS WITH SHEET METAL ESCUTCHEONS AND DUCT SEALANT.



See Revisior M12-1 dated 9-2-10.

ENERGY RECOVERY FLOW DIAGRAM
NO SCALE



PARTIAL H.V.A.C. FLOW DIAGRAM DETAIL

NO SCALE

1 REVISION : MOVE STRAINER, DELETE 3-WAY VALVE.

	Staggs and Fisher Consulting Engineers, Inc. 3264 Lochness Drive Lexington, Kentucky 40517	U of L / Siemens Performance Contract Louisville, KY	DRAWN BY: GWK CHECKED: JRM DATE: 9-2-10	DRAWING NO.: M12-R1
--	--	---	--	-----------------------------------