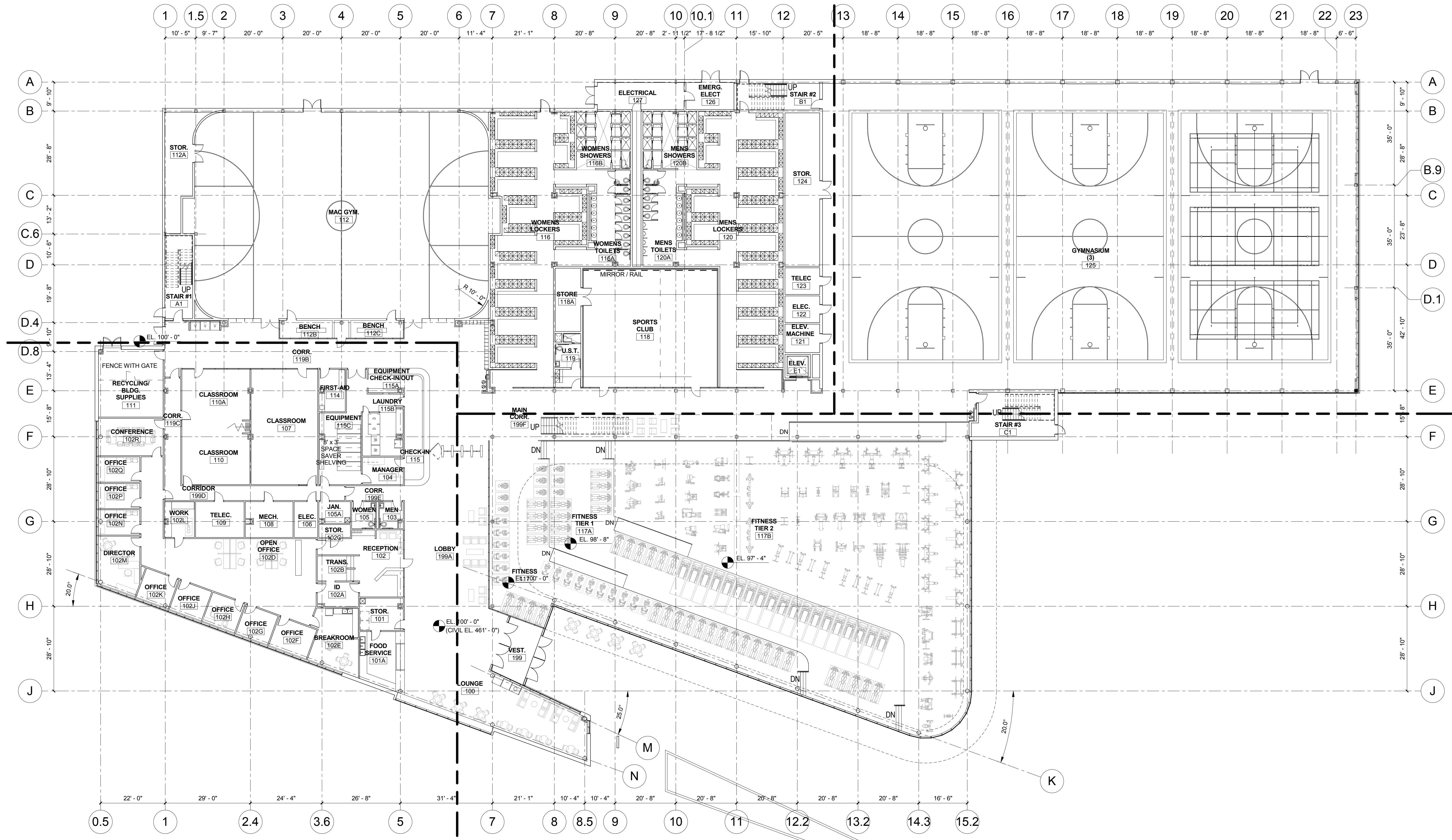


© Cannon Design 2010. This document may be reproduced or translated in any form without prior written authorization by The Cannon Corporation.
 8/20/2011 8:48:26 PM



1 OVERALL FLOOR PLAN - LEVEL 01
 1/16" = 1'-0"

Louisville, Ky

(DD SUBMITTAL)

University of Louisville - Student Recreational Facility

Omni ARCHITECTS
 212 North Upper Street
 Lexington, Kentucky 40507-1001
 P 859.252.6664 F 859.253.2358
 www.omniarchitects.com

CANNONDESIGN



#	Revision Date

Drawing Name: OVERALL FLOOR PLAN - LEVEL 01
 U of L Project Number: 03667.00
 Project Number: 03667.00
 Date: August 16, 2011
 Drawn By: Author
 Checked By: Checker

A0110

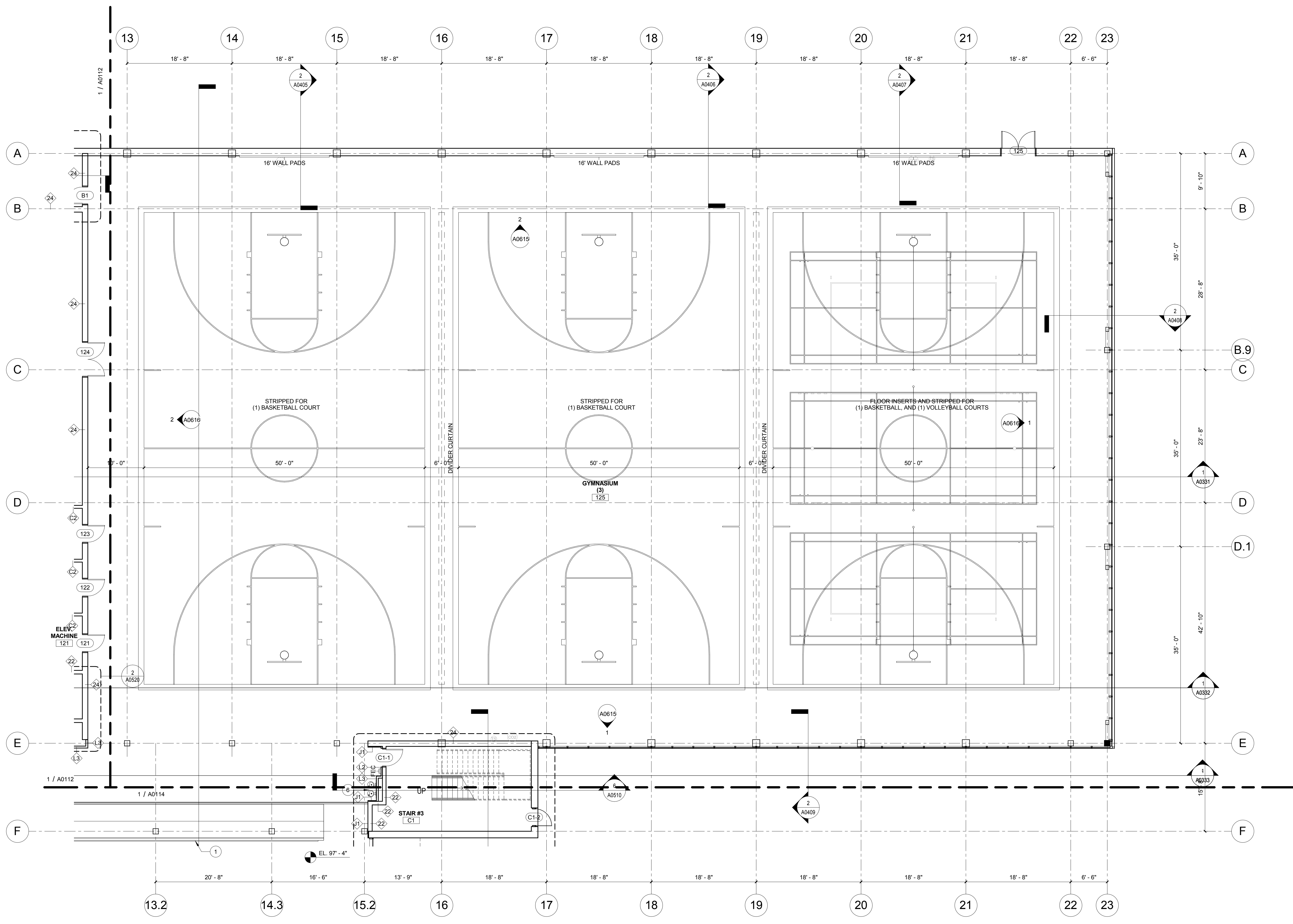


#	Revision Date

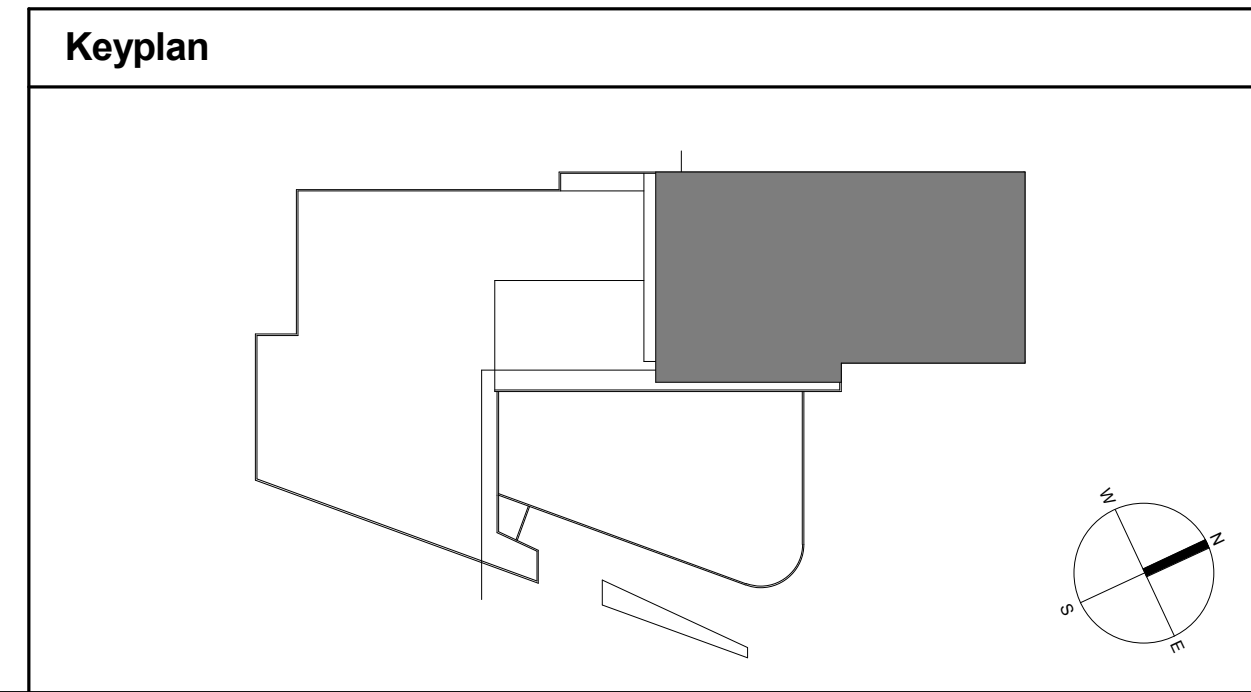
- GENERAL NOTES**
1. REFER TO GENERAL NOTES ON SHEET A000.
 2. REFER TO CODE COMPLIANCE PLANS FOR RATED AND SMOKE PARTITIONS. COORDINATE WITH P-TYPE INDICATED.
 3. REFER TO SHEET A000 & A000 FOR PARTITION TYPES AND DETAILS OF PARTITION AND CURTAIN WALL INTERSECTIONS.
 4. REFER TO SHEET A000 & A000 FOR DOOR TYPES AND SCHEDULE.
 5. FOR TYPICAL STOREFRONT DETAILS, REFER - X0000.
 6. REFER TO INTERIOR ELEVATIONS FOR STOREFRONT TYPES.
 7. REFER TO REFLECTED CEILING PLANS FOR SUSPENDED GYMNASIUM EQUIPMENT AND DIVIDER CURTAIN LOCATIONS.

KEYED NOTES - PLAN

Key	Description
1	08 XXXX - MIRROR
3	XX XXXX - TURNSTILES
4	XX XXXX - MOP SINK
5	XX XXXX - ADA GATE
6	22 XXXX - HI-LOW DRINKING FOUNTAIN (FLUSH-MOUNTED)
7	22 XXXX - BOTTLE FILLER (FLUSH-MOUNTED)
8	22 XXXX - CUSPIDOR (RECESSED)
9	22 XXXX - HI-LOW DRINKING FOUNTAIN (WALL-MOUNTED)
10	22 XXXX - BOTTLE FILLER (WALL-MOUNTED)
11	XX XXXX - FIVE-TIER LOCKERS (15'Wx15'Dx14.4'H)
12	XX XXXX - SOUND RACK

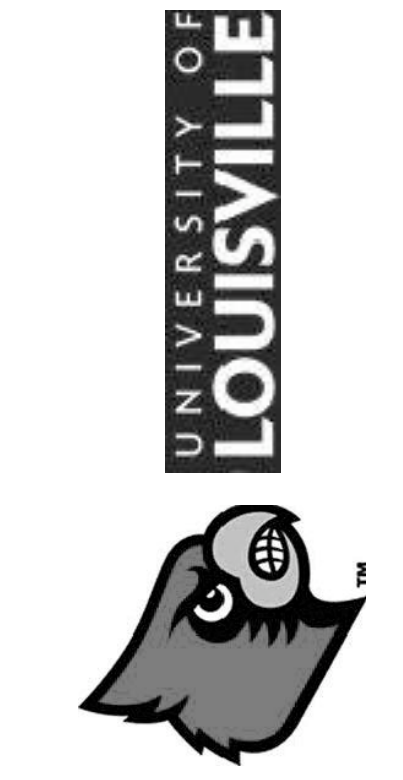
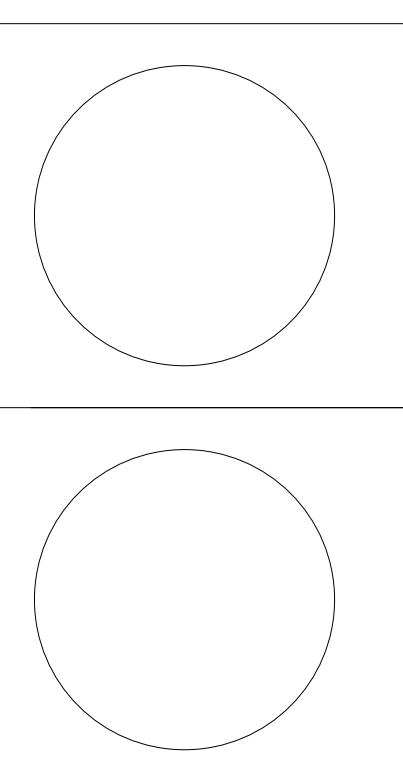


1 FLOOR PLAN - LEVEL 01 - PART 'A'
1/8" = 1'-0"



© Cannon Design 2010. All rights reserved. This document may be reproduced or transmitted in any form or by any means without prior written authorization by The Cannon Corporation.
8/20/2011 8:48:48 PM

Drawing Name: FLOOR PLAN - LEVEL 01 - PART 'A'
 U of L Project Number: 03667.00
 Project Number: August 16, 2011
 Date: Author Checked By: Checker



#	Revision Date

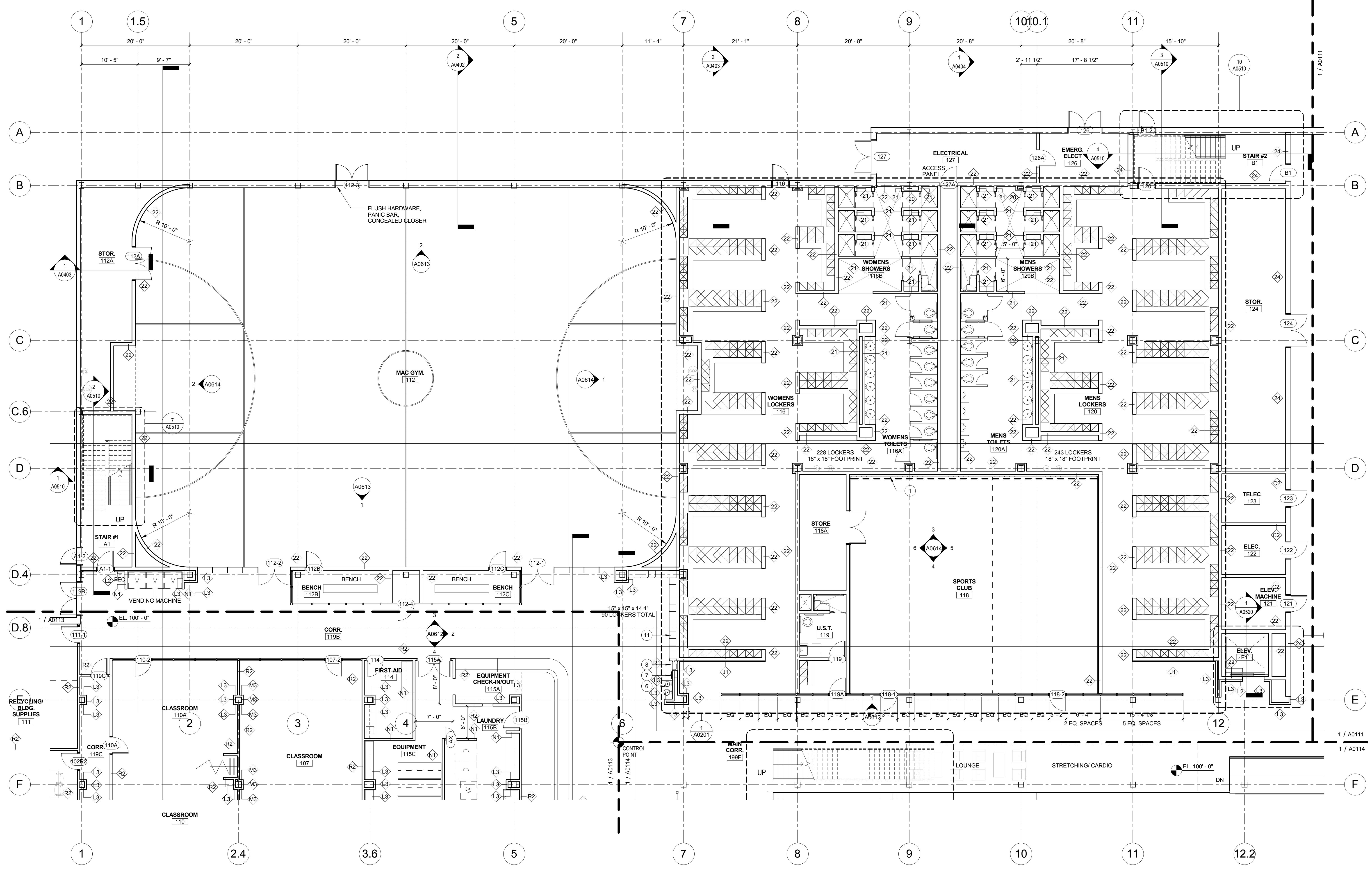
Drawing Name: FLOOR PLAN - LEVEL 01 - PART 'B'
 U of L Project Number: 03667.00
 Project Number: August 16, 2011
 Date: Author Checked By: Checker

A0112

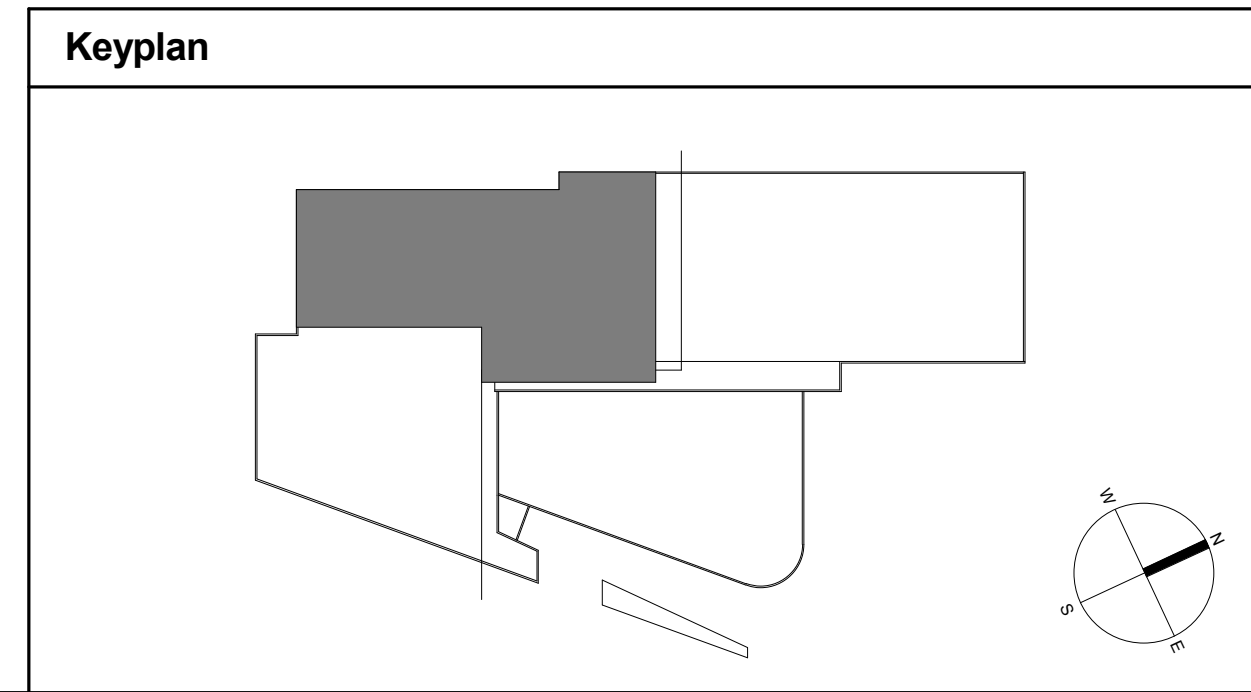
- GENERAL NOTES**
- REFER TO GENERAL NOTES ON SHEET A000.
 - REFER TO CODE COMPLIANCE PLANS FOR RATED AND SMOKE PARTITIONS. COORDINATE WITH P-TYPE INDICATED.
 - REFER TO SHEET Axxxx & Axxxx FOR PARTITION TYPES AND DETAILS OF PARTITION AND CURTAIN WALL INTERSECTIONS.
 - REFER TO SHEET Axxxx & Axxxx FOR DOOR TYPES AND SCHEDULES.
 - FOR TYPICAL STOREFRONT DETAILS, REFER - Axxxx.
 - REFER TO INTERIOR ELEVATIONS FOR STOREFRONT TYPES.
 - REFER TO REFLECTED CEILING PLANS FOR SUSPENDED GYMNASIUM EQUIPMENT AND DIVIDER CURTAIN LOCATIONS.

KEYED NOTES - PLAN

Key	Description
1	08 XXXX - MIRROR
2	XX XXXX - TURNSTILES
3	XX XXXX - MOP SINK
4	XX XXXX - ADA GATE
5	22 XXXX - HI-LOW DRINKING FOUNTAIN (FLUSH-MOUNTED)
6	22 XXXX - BOTTLE FILLER (FLUSH-MOUNTED)
7	22 XXXX - CUSPIDOR (RECESSED)
8	22 XXXX - HI-LOW DRINKING FOUNTAIN (WALL-MOUNTED)
9	22 XXXX - BOTTLE FILLER (WALL-MOUNTED)
10	XX XXXX - FIVE-TIER LOCKERS (15'Wx15'Dx14.4'H)
11	XX XXXX - SOUND RACK



1 FLOOR PLAN - LEVEL 01 - PART 'B'
 1/8" = 1'-0"



© Cannon Design 2010. This document may be reproduced or translated in any form without prior written authorization by The Cannon Corporation.
 8/20/2011 8:46:52 PM

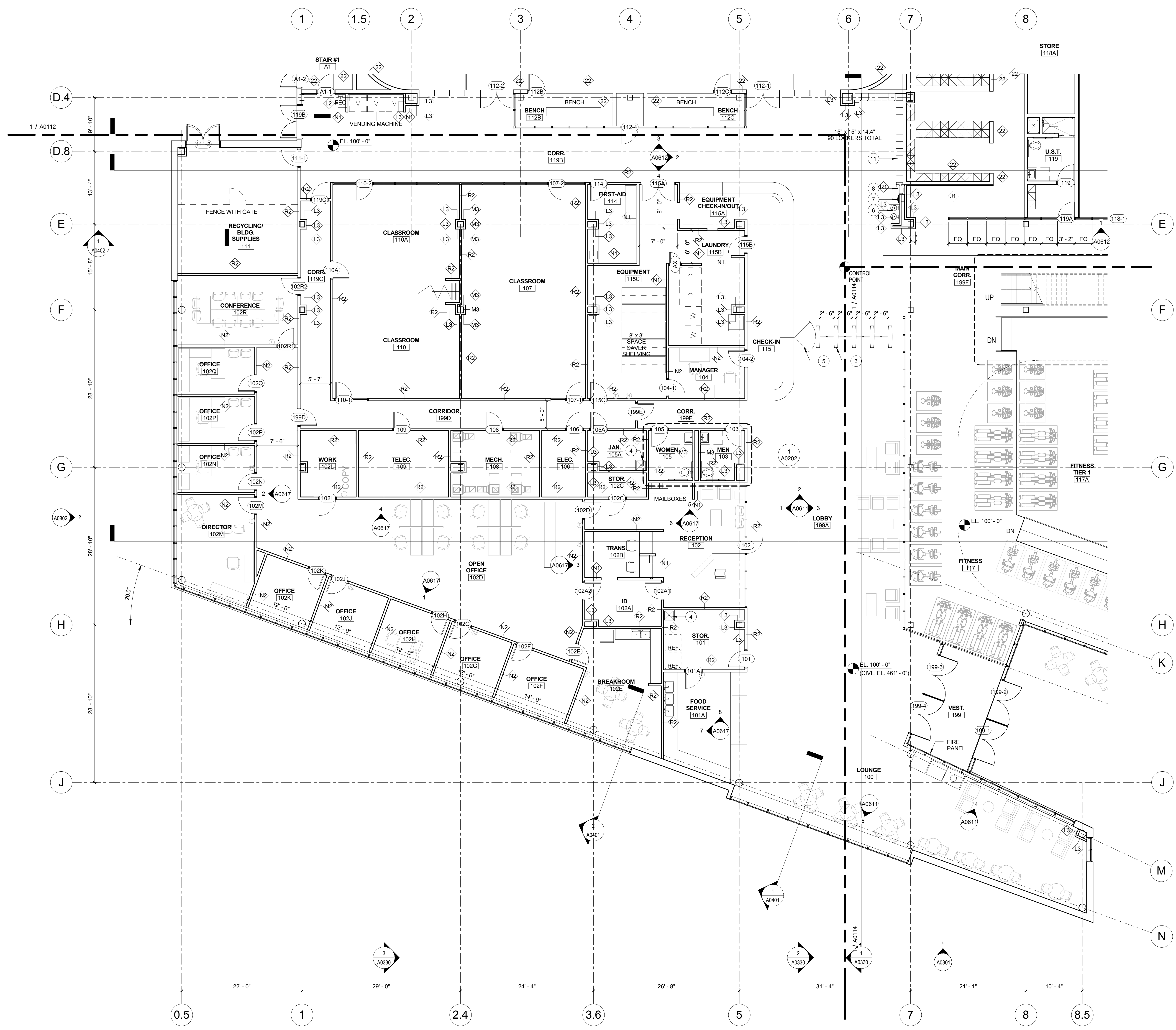


Drawing Name:	FLOOR PLAN - LEVEL 01 - PART 'C'
U of L Project Number:	03667.00
Project Number:	August 16, 2011
Date:	Author
Drawn By:	Checked By:

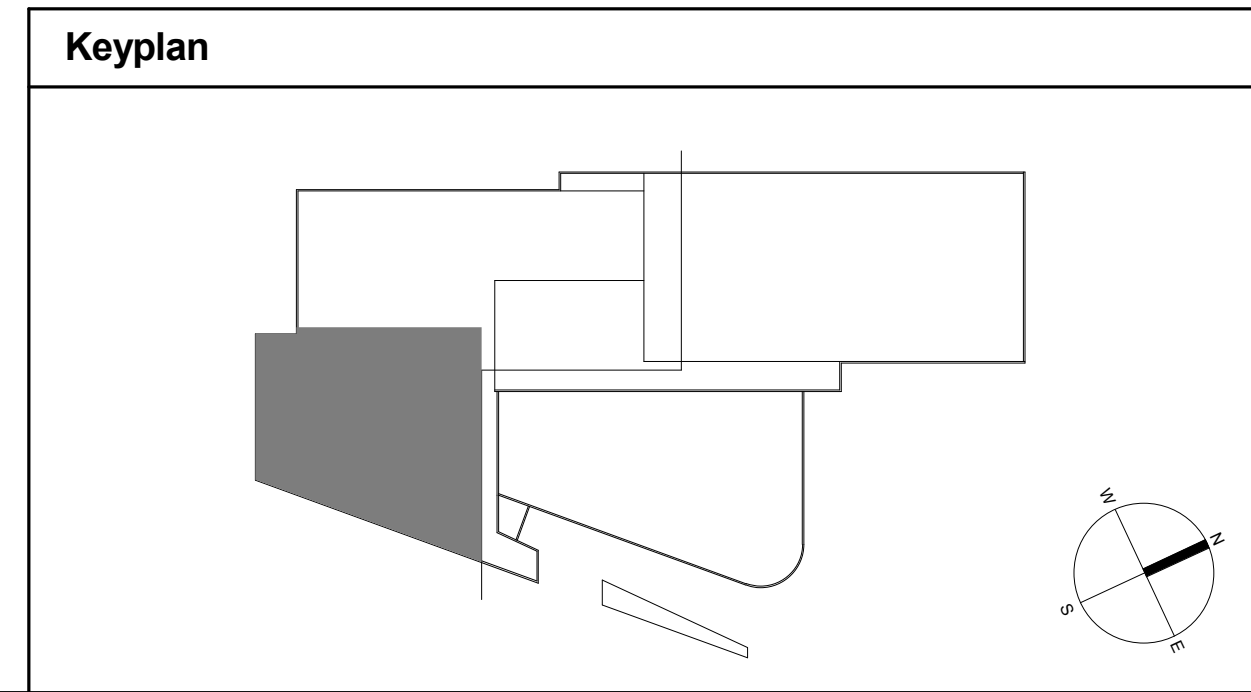
- GENERAL NOTES**
- REFER TO GENERAL NOTES ON SHEET A000.
 - REFER TO CODE COMPLIANCE PLANS FOR RATED AND SMOKE PARTITIONS. COORDINATE WITH P-TYPE INDICATED.
 - REFER TO SHEET Axxxx & Axxxx FOR PARTITION TYPES AND DETAILS OF PARTITION AND CURTAIN WALL INTERSECTIONS.
 - REFER TO SHEET Axxxx & Axxxx FOR DOOR TYPES AND SCHEDULE.
 - FOR TYPICAL STOREFRONT DETAILS, REFER - Axxxx.
 - REFER TO INTERIOR ELEVATIONS FOR STOREFRONT TYPES.
 - REFER TO REFLECTED CEILING PLANS FOR SUSPENDED GYMNASIUM EQUIPMENT AND DIVIDER CURTAIN LOCATIONS.

KEYED NOTES - PLAN

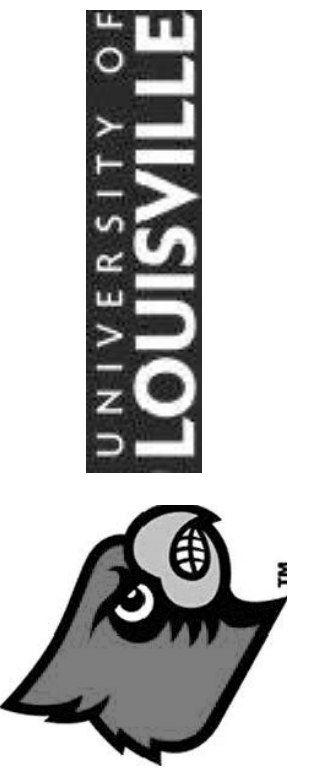
Key	Description
1	08 XXXX - MIRROR
2	XX XXXX - TURNSTILES
3	XX XXXX - MOP SINK
4	XX XXXX - ADA GATE
5	22 XXXX - HI-LOW DRINKING FOUNTAIN (FLUSH-MOUNTED)
6	22 XXXX - BOTTLE FILLER (FLUSH-MOUNTED)
7	22 XXXX - HI-LOW DRINKING FOUNTAIN (WALL-MOUNTED)
8	22 XXXX - BOTTLE FILLER (WALL-MOUNTED)
9	22 XXXX - HI-LOW DRINKING FOUNTAIN (WALL-MOUNTED)
10	22 XXXX - BOTTLE FILLER (WALL-MOUNTED)
11	XX XXXX - FIVE-TIER LOCKERS (15'Wx18'Dx14.4'H)
12	XX XXXX - SOUND RACK



1 FLOOR PLAN - LEVEL 01 - PART 'C'
1/8" = 1'-0"



© Cannon Design 2010. All rights reserved. This document may be reproduced or translated in any form without prior written authorization by The Cannon Corporation.
8/20/2011 8:46:57 PM



#	Revision Date

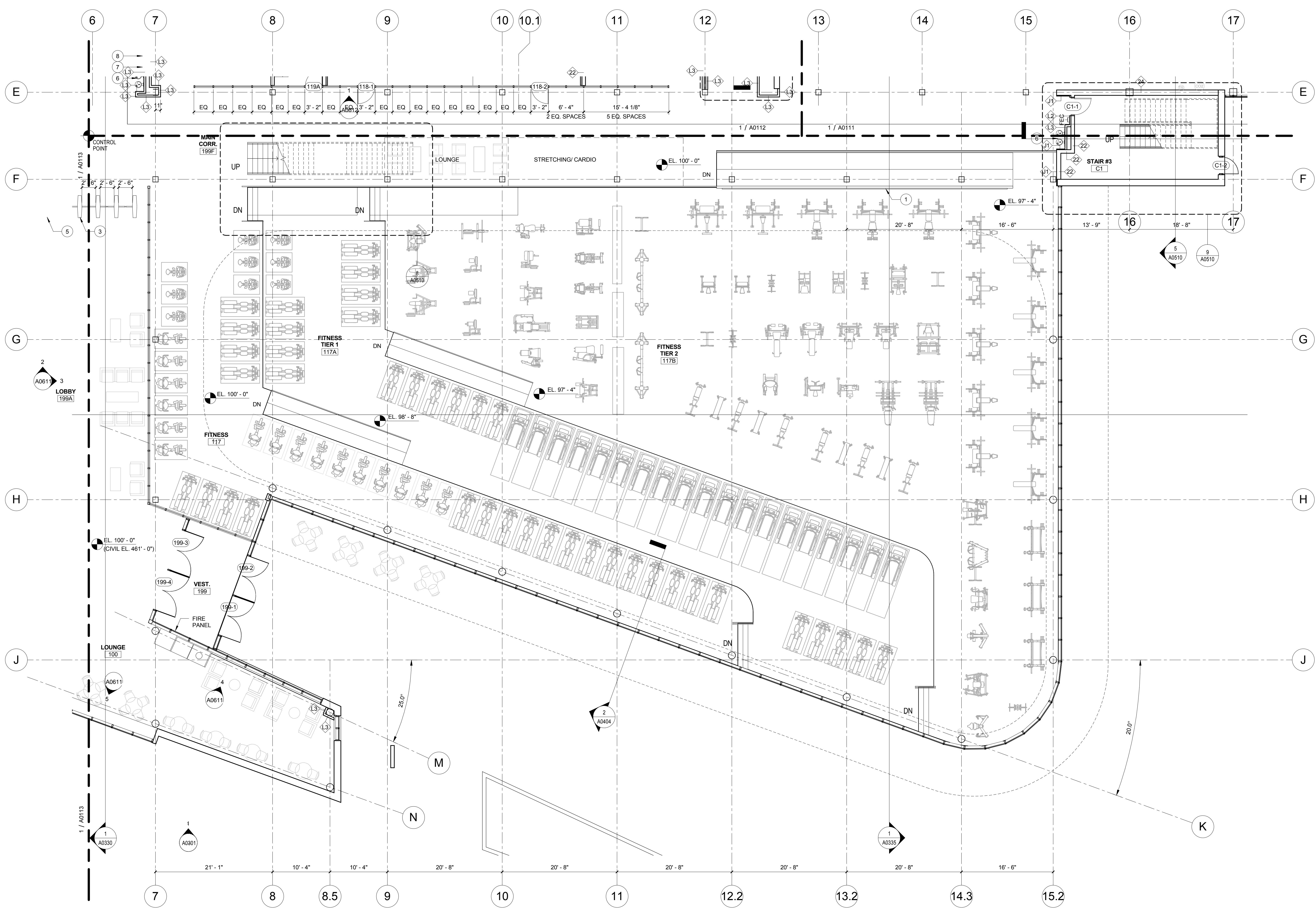
Drawing Name: FLOOR PLAN - LEVEL 01 - PART 'D'
 U of L Project Number: 03667.00
 Project Number: August 16, 2011
 Date: Author Checked By: Checker

A0114

- GENERAL NOTES**
- REFER TO GENERAL NOTES ON SHEET A000.
 - REFER TO CODE COMPLIANCE PLANS FOR RATED AND SMOKE PARTITIONS. COORDINATE WITH P-TYPE INDICATED.
 - REFER TO SHEET A000 & A000 FOR PARTITION TYPES AND DETAILS OF PARTITION AND CURTAIN WALL INTERSECTIONS.
 - REFER TO SHEET A000 & A000 FOR DOOR TYPES AND SCHEDULE.
 - FOR TYPICAL STOREFRONT DETAILS, REFER - xA000.
 - REFER TO INTERIOR ELEVATIONS FOR STOREFRONT TYPES.
 - REFER TO REFLECTED CEILING PLANS FOR SUSPENDED GYMNASIUM EQUIPMENT AND DIVIDER CURTAIN LOCATIONS.

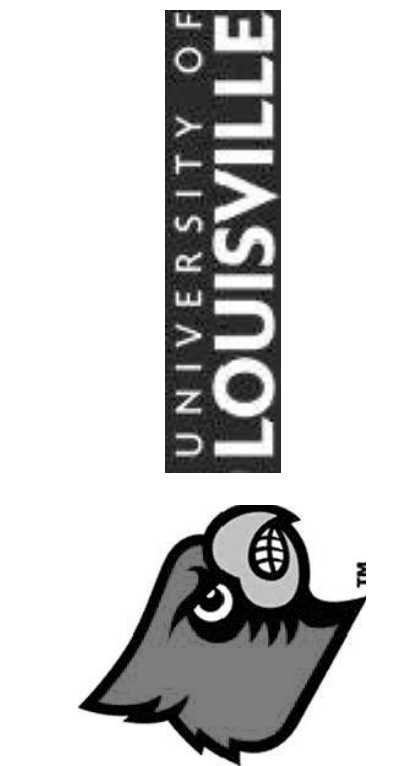
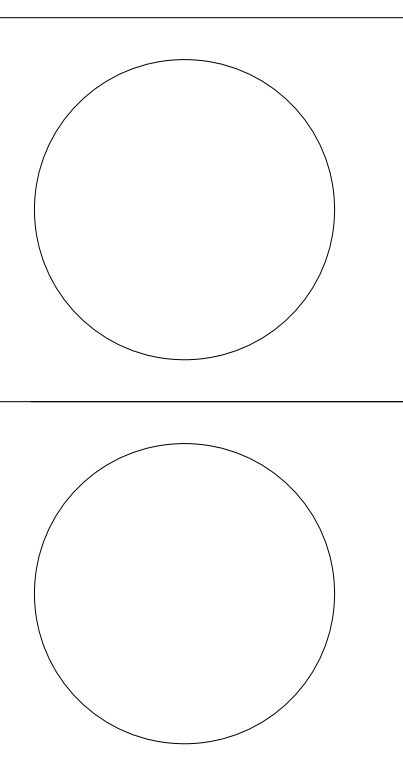
KEYED NOTES - PLAN

Key	Description
1	08 XXXX - MIRROR
3	XX XXXX - TURNSTILES
4	XX XXXX - MOP SINK
5	XX XXXX - ADA GATE
6	22 XXXX - HI-LOW DRINKING FOUNTAIN (FLUSH-MOUNTED)
7	22 XXXX - BOTTLE FILLER (FLUSH-MOUNTED)
8	22 XXXX - CUSPIDOR (RECESSED)
9	22 XXXX - HI-LOW DRINKING FOUNTAIN (WALL-MOUNTED)
10	22 XXXX - BOTTLE FILLER (WALL-MOUNTED)
11	XX XXXX - FIVE-TIER LOCKERS (15'Wx18'Dx14.4'H)
12	XX XXXX - SOUND RACK



1 FLOOR PLAN - LEVEL 01 - PART 'D'
 1/8" = 1'-0"

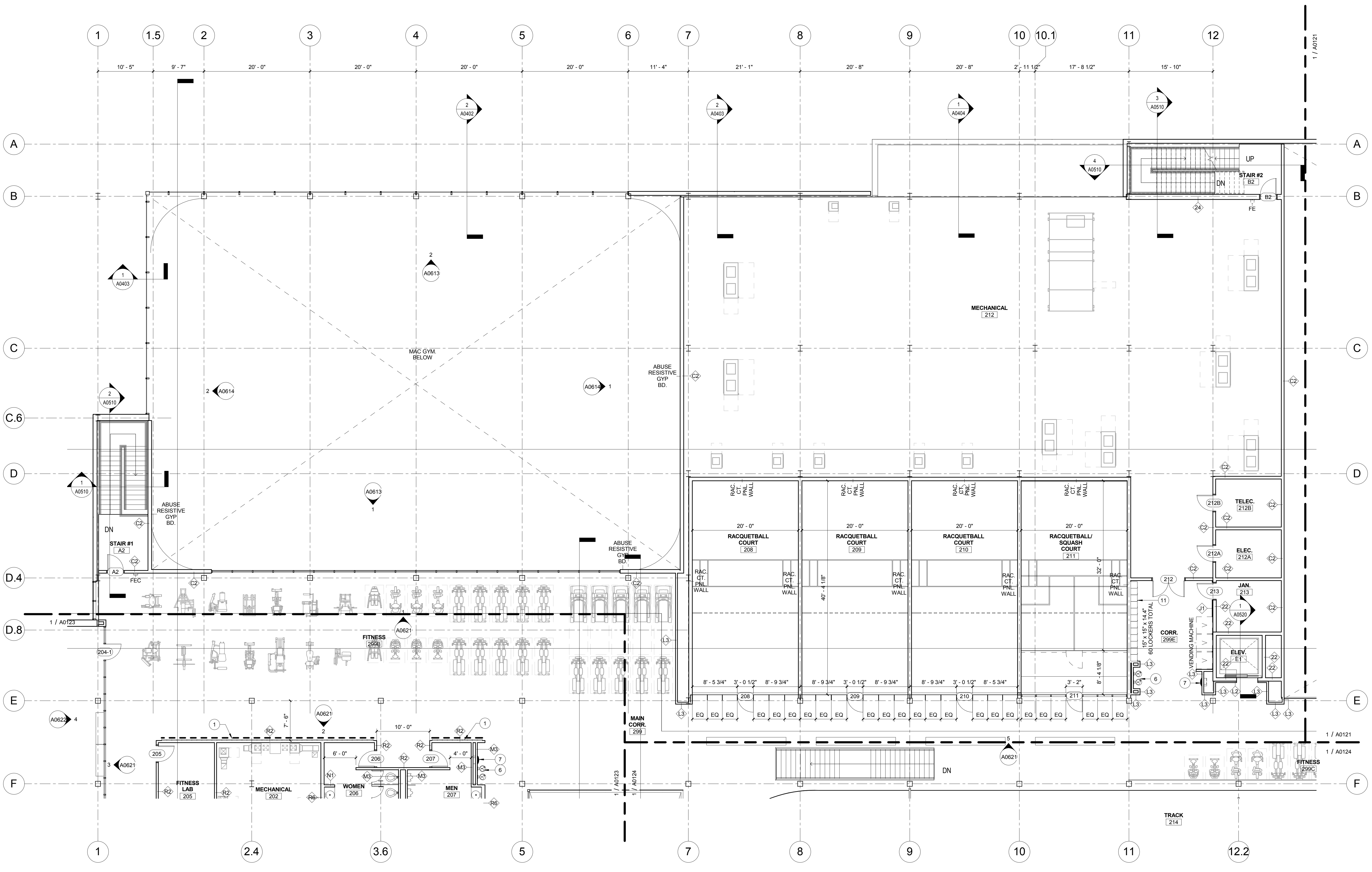
© Cannon Design 2010. All rights reserved. This document may be reproduced or transmitted in any form or by any means, without prior written authorization by The Cannon Corporation.
 8/20/2011 8:47:01 PM



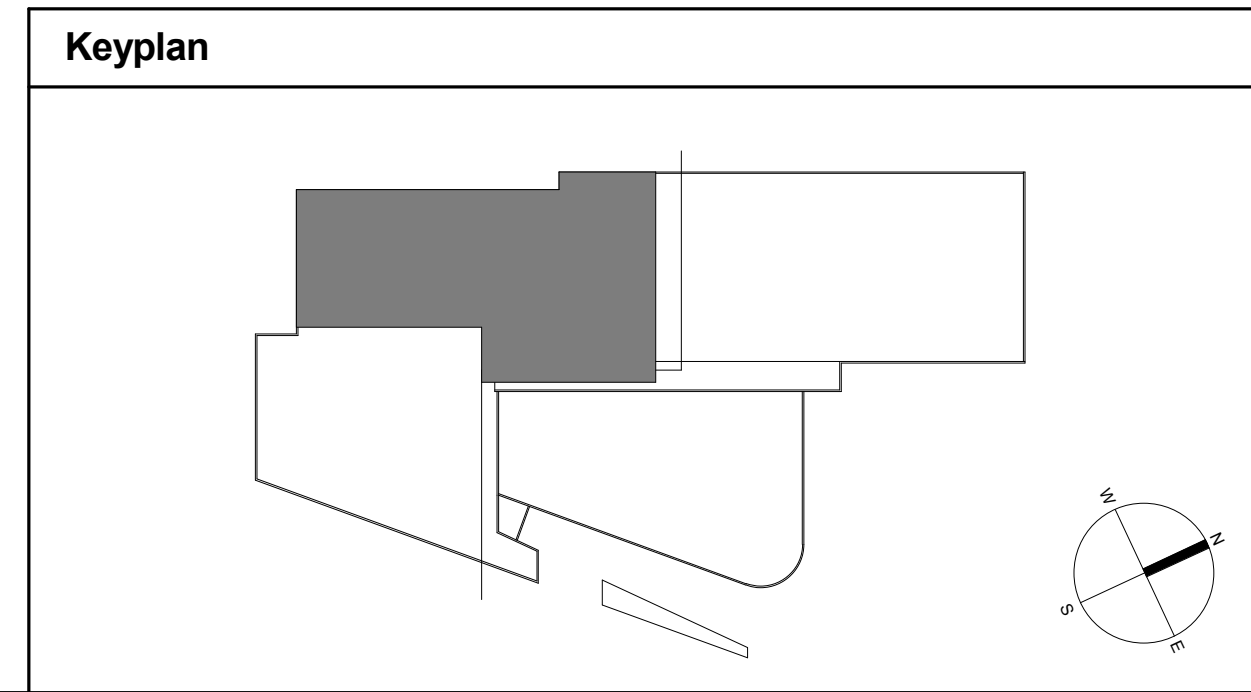
- GENERAL NOTES**
- REFER TO GENERAL NOTES ON SHEET A000.
 - REFER TO CODE COMPLIANCE PLANS FOR RATED AND SMOKE PARTITIONS. COORDINATE WITH P-TYPE INDICATED.
 - REFER TO SHEET Axxxx & Axxxx FOR PARTITION TYPES AND DETAILS OF PARTITION AND CURTAIN WALL INTERSECTIONS.
 - REFER TO SHEET Axxxx & Axxxx FOR DOOR TYPES AND SCHEDULE.
 - FOR TYPICAL STOREFRONT DETAILS, REFER - xAxxxx.
 - REFER TO INTERIOR ELEVATIONS FOR STOREFRONT TYPES.
 - REFER TO REFLECTED CEILING PLANS FOR SUSPENDED GYMNASIUM EQUIPMENT AND DIVIDER CURTAIN LOCATIONS.

KEYED NOTES - PLAN

Key	Description
1	08 XXXX - MIRROR
3	XX XXXX - TURNSTILES
4	XX XXXX - MOP SINK
5	XX XXXX - ADA GATE
6	22 XXXX - HI-LOW DRINKING FOUNTAIN (FLUSH-MOUNTED)
7	22 XXXX - BOTTLE FILLER (FLUSH-MOUNTED)
8	22 XXXX - CUSPIDOR (RECESSED)
9	22 XXXX - HI-LOW DRINKING FOUNTAIN (WALL-MOUNTED)
10	22 XXXX - BOTTLE FILLER (WALL-MOUNTED)
11	XX XXXX - FIVE-TIER LOCKERS (15'Wx15'Dx14.4'H)
12	XX XXXX - SOUND RACK



1 FLOOR PLAN - LEVEL 02 - PART 'B'
1/8" = 1'-0"



© Cannon Design 2010. This document may be reproduced or translated in any form without prior written authorization by The Cannon Corporation.
8/20/2011 8:47:11 PM

212 North Upper Street
Louisville, Kentucky 40507-1001
P: 859.252.6664 F: 859.253.2358
www.omnidesign.com

Omni
ARCHITECTS

CANNONDESIGN

UNIVERSITY OF
LOUISVILLE



Revision Date

Drawing Name: FLOOR PLAN - LEVEL 02 - PART 'D'

U of L Project Number: 03667.00

Project Number: August 16, 2011

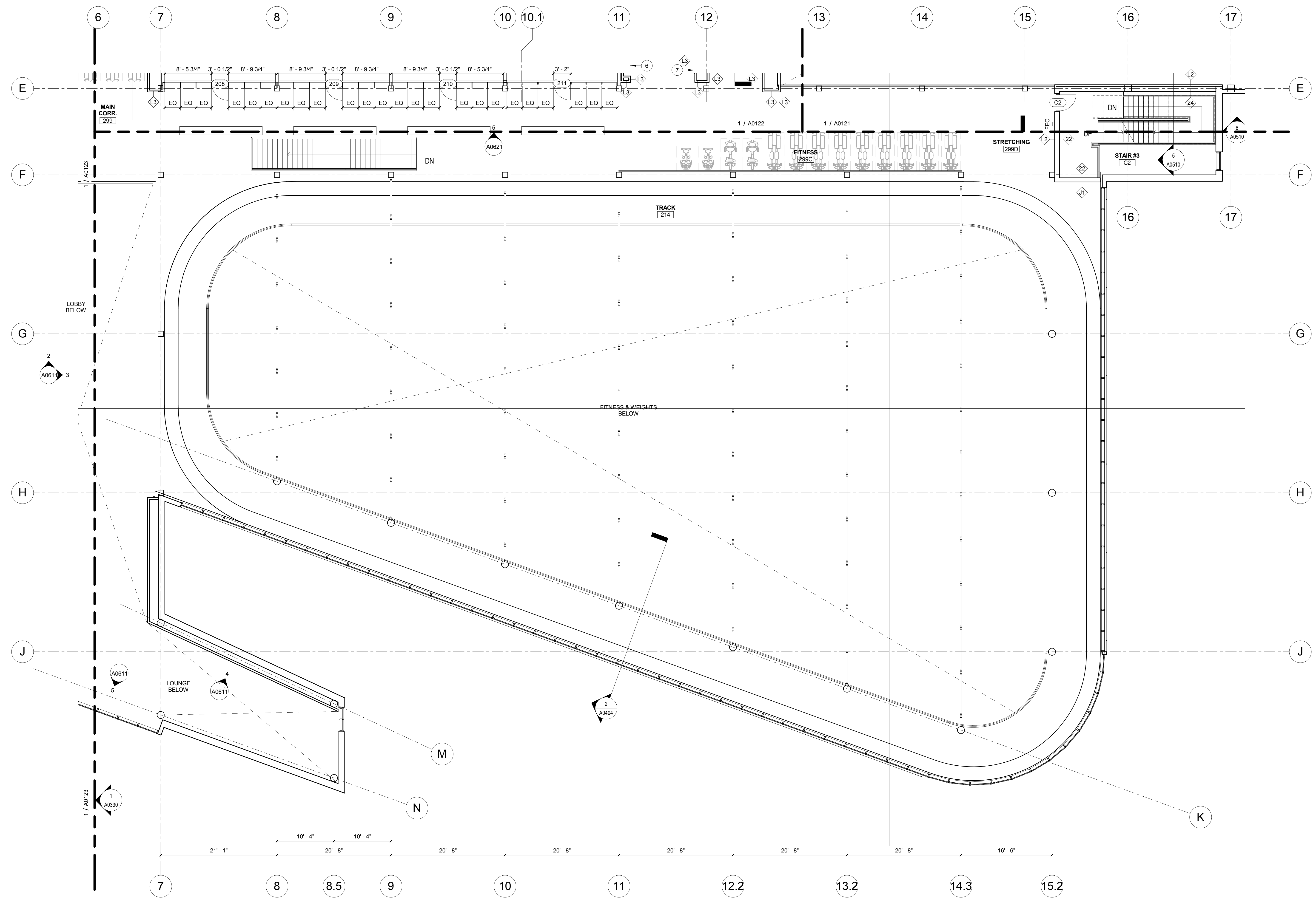
Date: Author Checked By: Checker

A0124

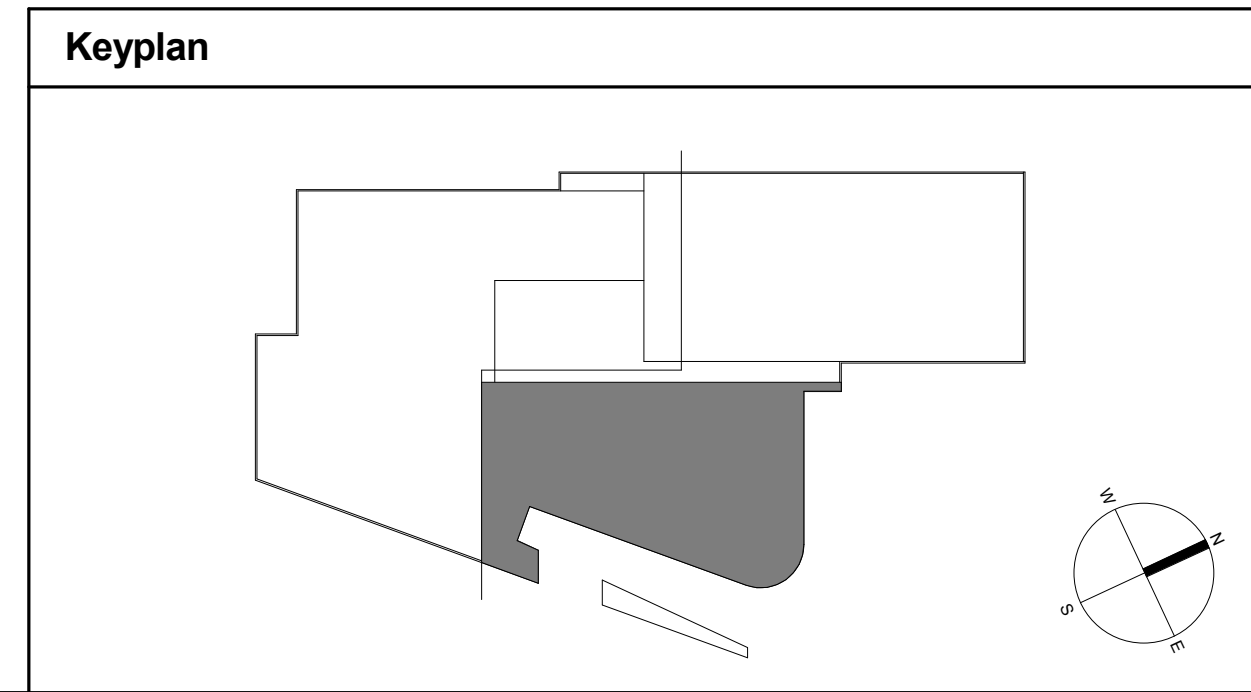
- GENERAL NOTES**
1. REFER TO GENERAL NOTES ON SHEET A000.
 2. REFER TO CODE COMPLIANCE PLANS FOR RATED AND SMOKE PARTITIONS. COORDINATE WITH P-TYPE INDICATED.
 3. REFER TO SHEET Axxxx & Axxxx FOR PARTITION TYPES AND DETAILS OF PARTITION AND CURTAIN WALL INTERSECTIONS.
 4. REFER TO SHEET Axxxx & Axxxx FOR DOOR TYPES AND SCHEDULE.
 5. FOR TYPICAL STOREFRONT DETAILS, REFER - a)Axxxx.
 6. REFER TO INTERIOR ELEVATIONS FOR STOREFRONT TYPES.
 7. REFER TO REFLECTED CEILING PLANS FOR SUSPENDED GYMNASIUM EQUIPMENT AND DIVIDER CURTAIN LOCATIONS.

KEYED NOTES - PLAN

Key	Description
1	08 XXXX - MIRROR
3	XX XXXX - TURNSTILES
4	XX XXXX - MOP SINK
5	XX XXXX - ADA GATE
6	22 XXXX - HI-LOW DRINKING FOUNTAIN (FLUSH-MOUNTED)
7	22 XXXX - BOTTLE FILLER (FLUSH-MOUNTED)
8	22 XXXX - CUSPIDOR (RECESSED)
9	22 XXXX - HI-LOW DRINKING FOUNTAIN (WALL-MOUNTED)
10	22 XXXX - BOTTLE FILLER (WALL-MOUNTED)
11	XX XXXX - FIVE-TIER LOCKERS (15'Wx15'Dx14.4'H)
12	XX XXXX - SOUND RACK

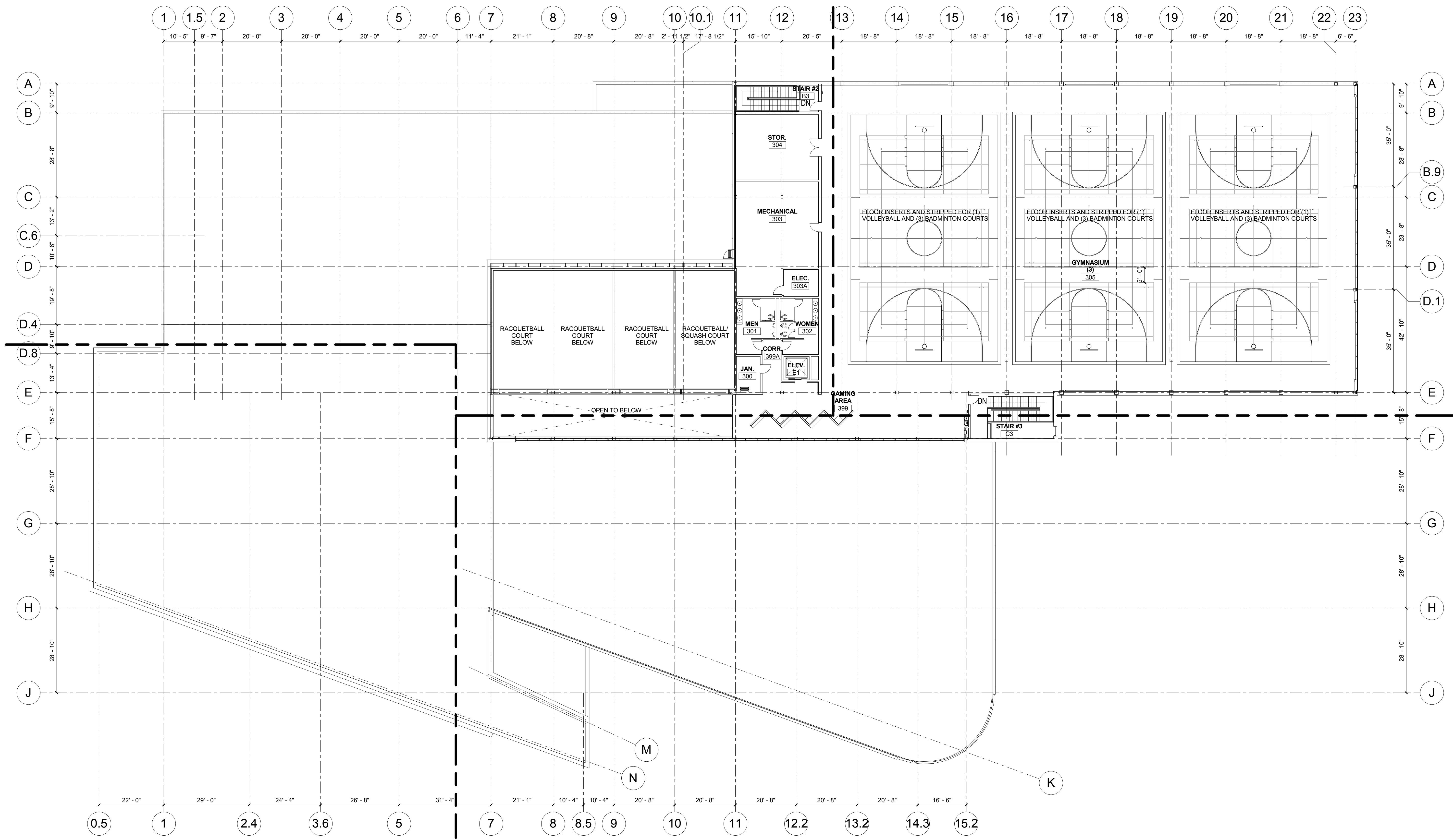


1 FLOOR PLAN - LEVEL 02 - PART 'D'
1/8" = 1'-0"



© Cannon Design 2010. This document may be reproduced or translated in any form without prior written authorization by The Cannon Corporation.
8/20/2011 8:47:18 PM

© Cannon Design 2010
 All rights reserved. No part of this document may be reproduced or transmitted in any form or by any means, electronic, mechanical, photocopying, recording, or by any information storage and retrieval system, without prior written authorization by The Cannon Corporation.
 8/20/2011 8:47:23 PM



1 OVERALL FLOOR PLAN - LEVEL 03
 1/16" = 1'-0"

University of Louisville - Student Recreational Facility (DD SUBMITTAL)

Louisville, Ky

#	Revision Date

Drawing Name: OVERALL FLOOR PLAN - LEVEL 03
 U of L Project Number: 03667.00
 Project Number: 03667.00
 Date: August 16, 2011
 Drawn By: Author
 Checked By: Checker



Omni
 ARCHITECTS

212 North Upper Street
 Lexington, Kentucky 40507-1001
 P 609.252.6664 F 609.253.2358
 www.omnicorarchitects.com

CANNONDESIGN

A0130



Revision Date

Drawing Name: FLOOR PLAN - LEVEL 03 - PART 'B'

U of L Project Number: 03667.00

Project Number: August 16, 2011

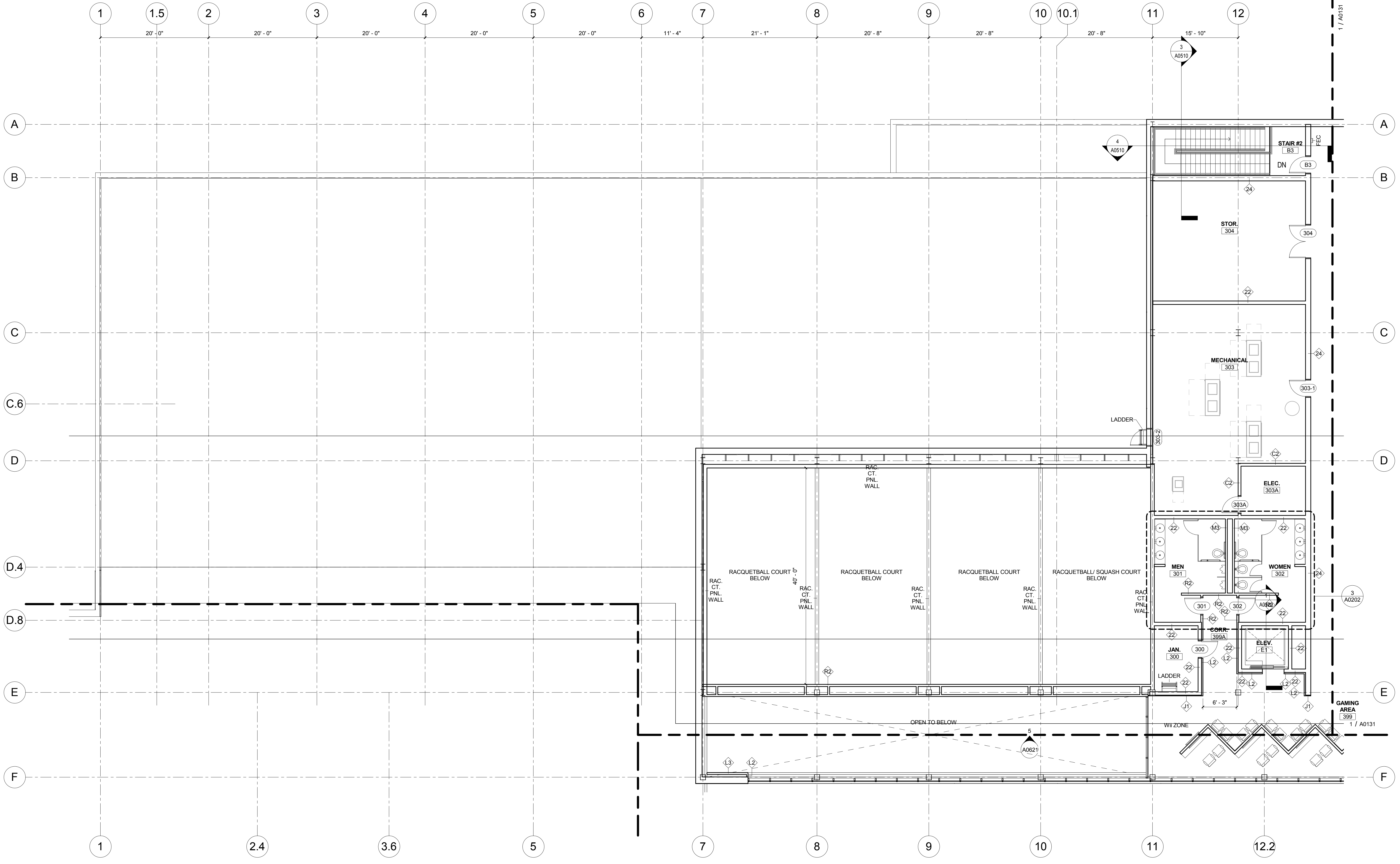
Date: Author Checked By: Checker

A0132

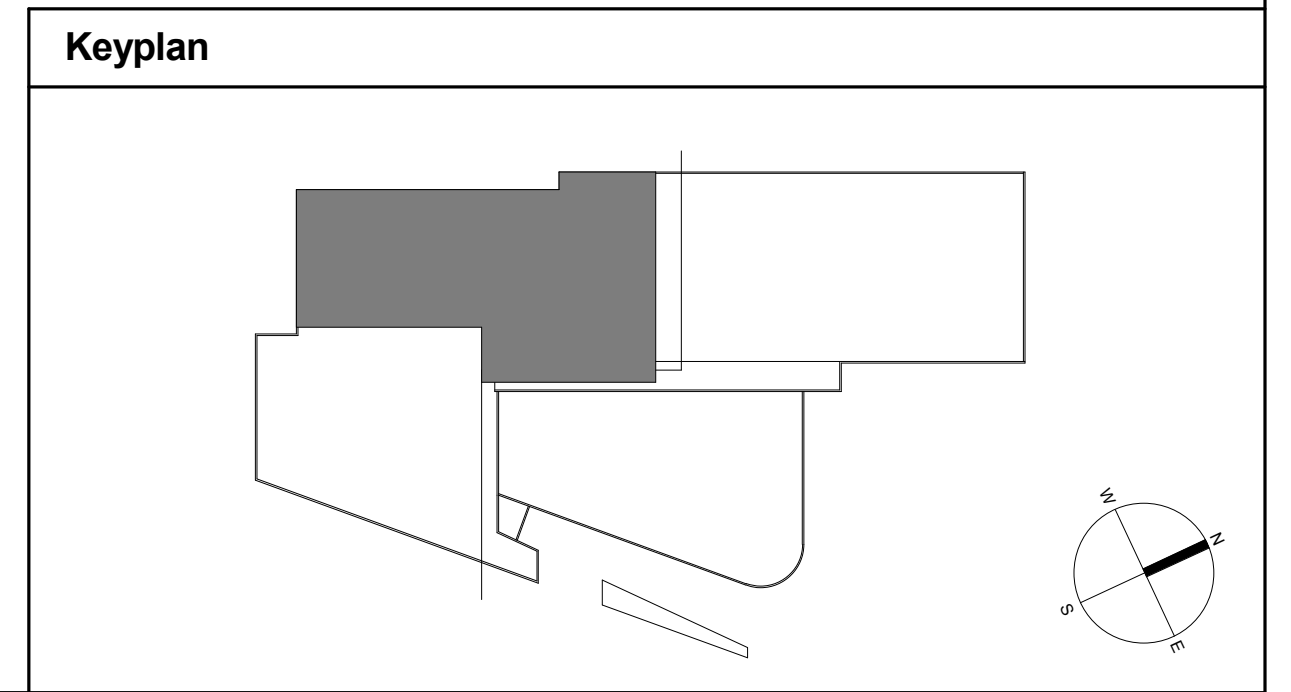
- GENERAL NOTES**
- REFER TO GENERAL NOTES ON SHEET A000.
 - REFER TO CODE COMPLIANCE PLANS FOR RATED AND SMOKE PARTITIONS. COORDINATE WITH P-TYPE INDICATED.
 - REFER TO SHEET Axxxx & Axxxx FOR PARTITION TYPES AND DETAILS OF PARTITION AND CURTAIN WALL INTERSECTIONS.
 - REFER TO SHEET Axxxx & Axxxx FOR DOOR TYPES AND SCHEDULE.
 - FOR TYPICAL STOREFRONT DETAILS, REFER - »Axxxx.
 - REFER TO INTERIOR ELEVATIONS FOR STOREFRONT TYPES.
 - REFER TO REFLECTED CEILING PLANS FOR SUSPENDED GYMNASIUM EQUIPMENT AND DIVIDER CURTAIN LOCATIONS.

KEYED NOTES - PLAN

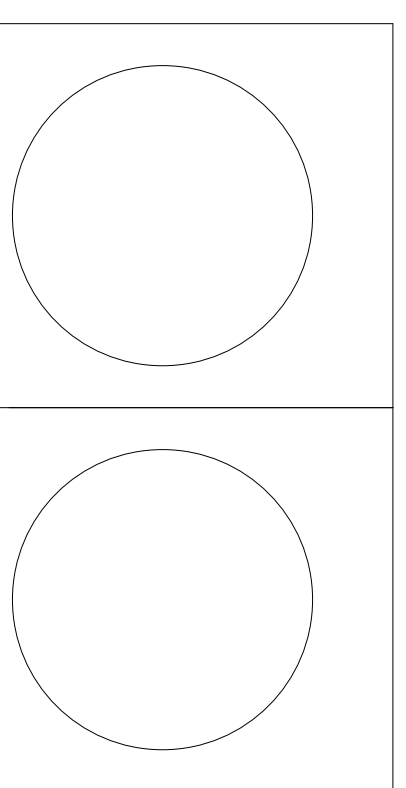
Key	Description
1	08 XXXX - MIRROR
3	XX XXXX - TURNSTILES
4	XX XXXX - MOP SINK
5	XX XXXX - ADA GATE
6	22 XXXX - HI-LOW DRINKING FOUNTAIN (FLUSH-MOUNTED)
7	22 XXXX - BOTTLE FILLER (FLUSH-MOUNTED)
8	22 XXXX - CUSPIDOR (RECESSED)
9	22 XXXX - HI-LOW DRINKING FOUNTAIN (WALL-MOUNTED)
10	22 XXXX - BOTTLE FILLER (WALL-MOUNTED)
11	XX XXXX - FIVE-TIER LOCKERS (15'Wx15'Dx14.4'H)
12	XX XXXX - SOUND RACK



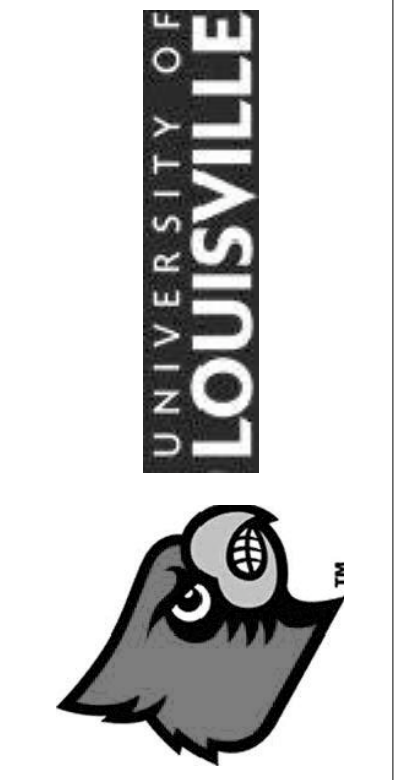
1 FLOOR PLAN - LEVEL 03 - PART 'B'
1/8" = 1'-0"



© Cannon Design 2010. This document may be reproduced or translated in any form without prior written authorization by The Cannon Corporation.
8/20/2011 8:47:30 PM



Omni ARCHITECTS



Drawing Name:	LOCKERS - ENLARGED PLANS	Revision Date	
U of L Project Number:	03667.00	Author	Checker
Project Number:		Checked By:	
Date:	August 16, 2011		

A0201

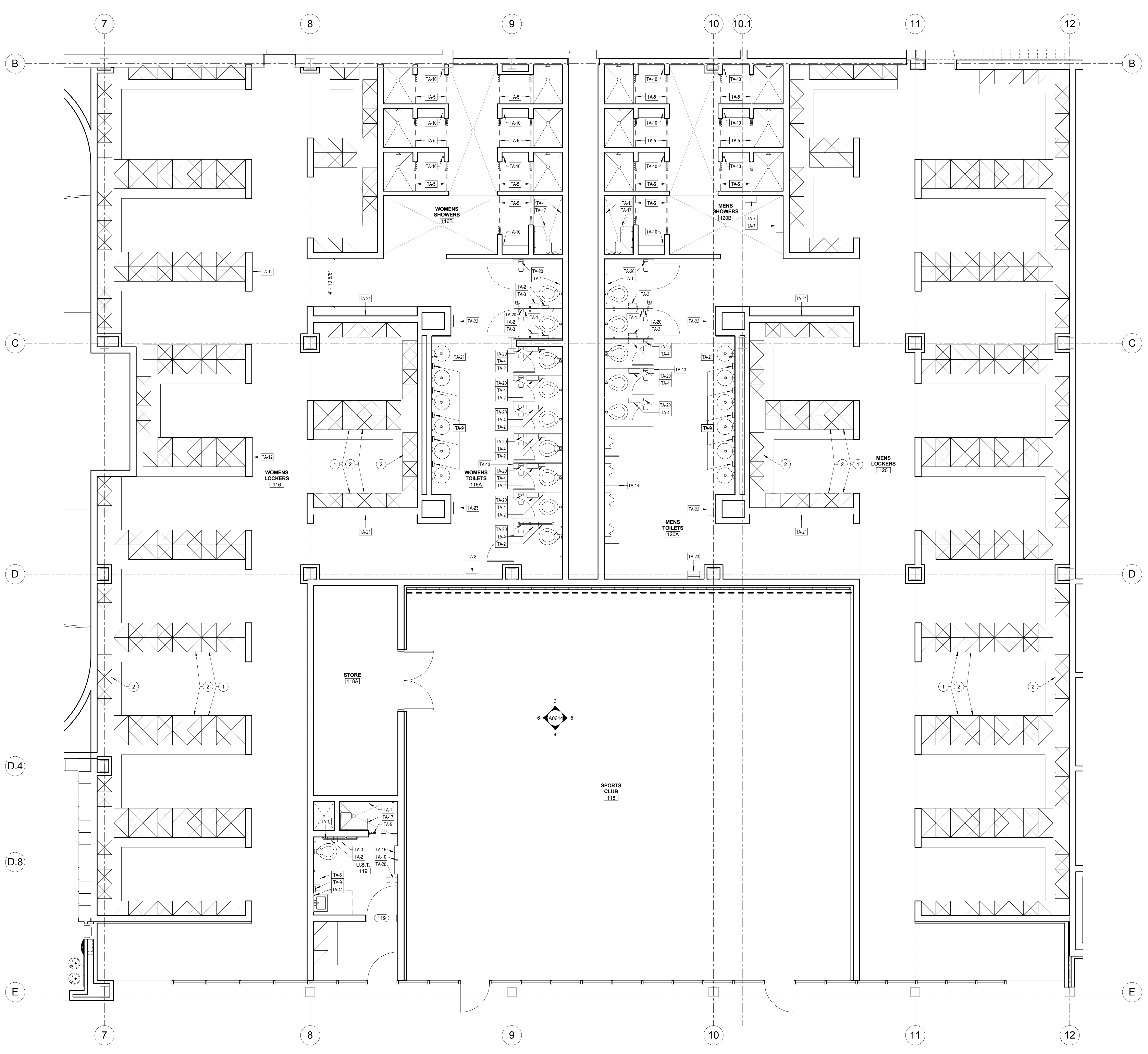
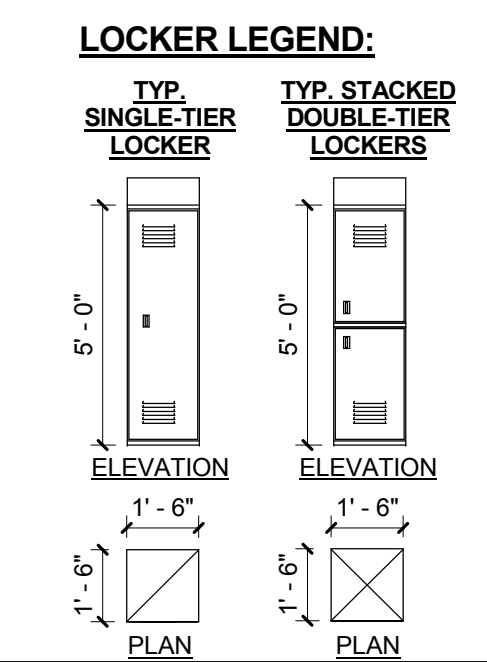
- GENERAL NOTES**
- FOR TOILET ACCESSORIES MOUNTING HEIGHTS REFER TO SHEET - A0002.
 - REFER TO FINISH PLANS & FINISH SCHEDULES ON SHEETS - A12xx FOR FINISHES.
 - ALL LOCKERS TO RECEIVE CLOSURE STRIPS AT SIDES AND TOPS.

TOILET ACCESSORIES

TA Keynote	Description
TA-1	GRAB BARS
TA-2	SANITARY DISPOSAL
TA-3	ACCESSIBLE TOILET PAPER DISPENSER (OFOI)
TA-4	TOILET PAPER DISPENSER (OFOI)
TA-5	SHOWER CURTAIN ROD WITH CURTAINS
TA-6	ELECTRIC HAND DRYER
TA-7	ELECTRIC HAIR DRYER
TA-8	SANITARY SUPPLIES DISPENSER
TA-9	SOAP DISPENSER (OFOI)
TA-10	TOWEL PIN
TA-11	LAVATORY MIRROR WITH SHELF
TA-12	FULL-LENGTH MIRROR
TA-13	TOILET PARTITION
TA-14	URINAL SCREENS
TA-15	BABY CHANGING TABLE
TA-17	SHOWER SEAT
TA-20	PURSE SHELF
TA-21	WALL-TO-WALL MIRROR OVER COUNTER
TA-23	PAPER TOWEL DISPENSER (OFOI)

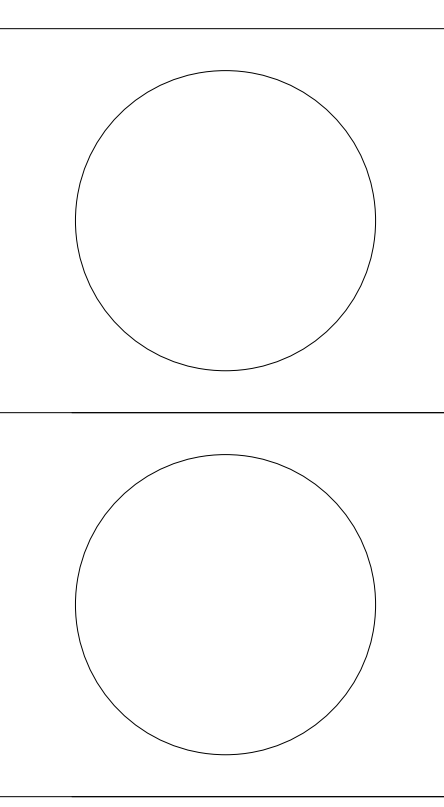
KEYED NOTES - TOILETS / LOCKERS / SHOWERS

Key	Description
1	SINGLE-TIER LOCKER
2	DOUBLE-TIER LOCKERS



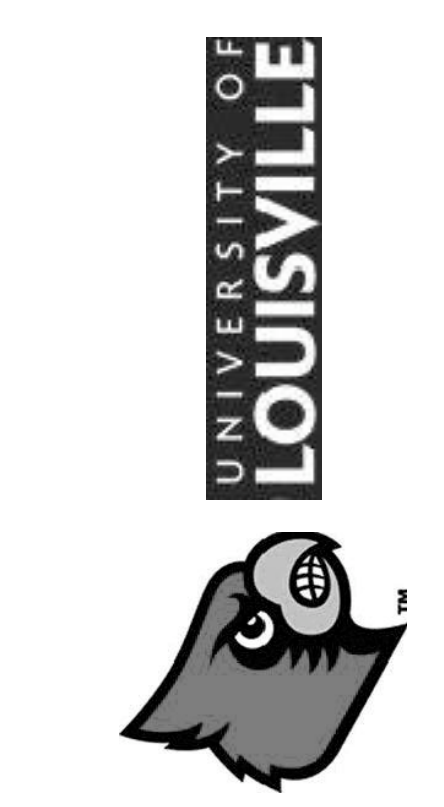
1 A-048-LP LOCKER ROOMS
1/4" = 1'-0"

© Cannon Design 2010. All rights reserved. This document may be reproduced or translated in any form without prior written authorization by The Cannon Corporation.
8/20/2011 8:47:34 PM



Omni ARCHITECTS
 212 North Upper Street
 Lexington, Kentucky 40507-1001
 P: 859.252.6664 F: 859.253.2358
 www.omniarchitects.com

CANNONDESIGN

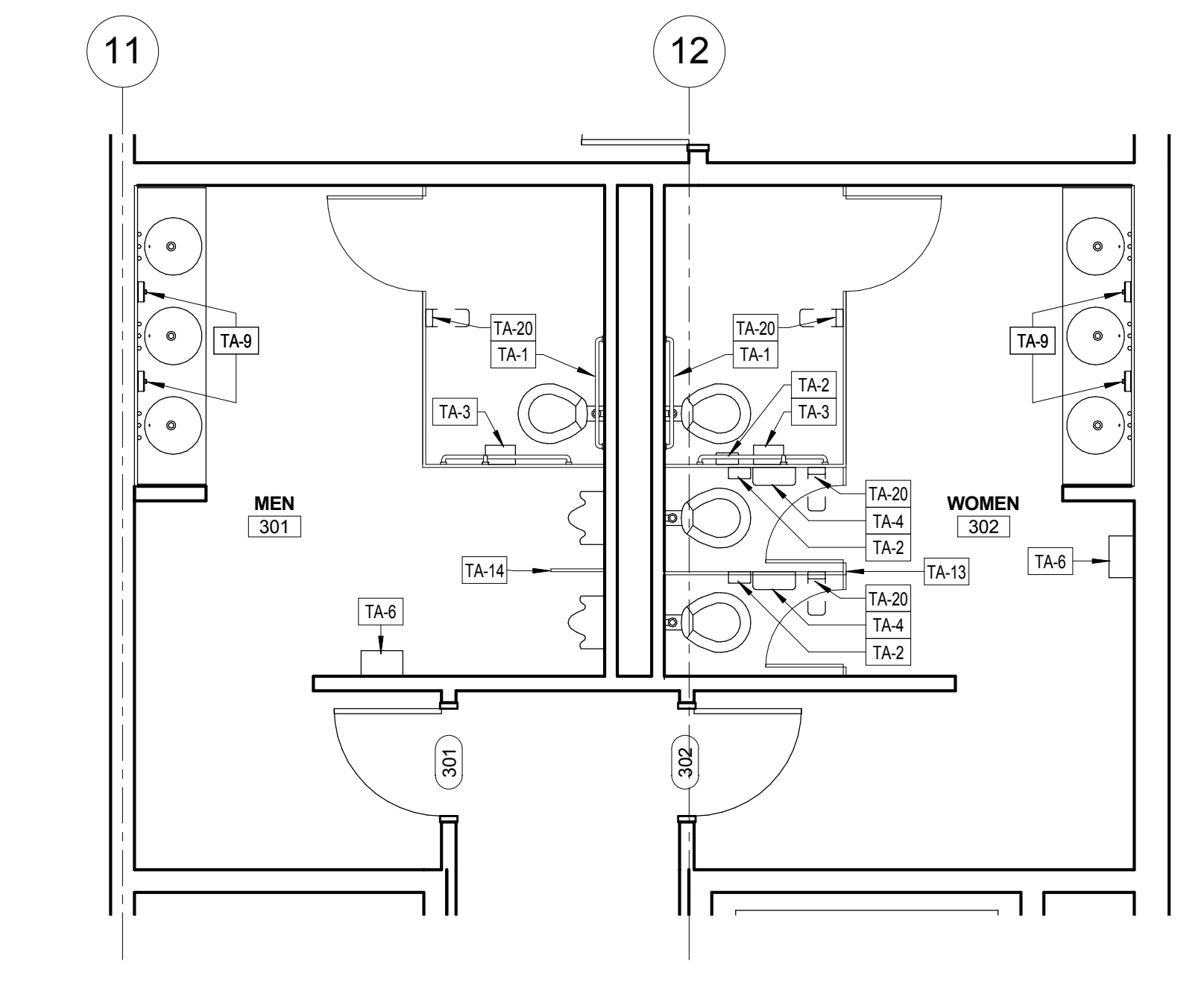


Drawing Name:	RESTROOMS
U of L Project Number:	03667.00
Project Number:	August 16, 2011
Date:	Author
Drawn By:	Checked By:
Author	Checker

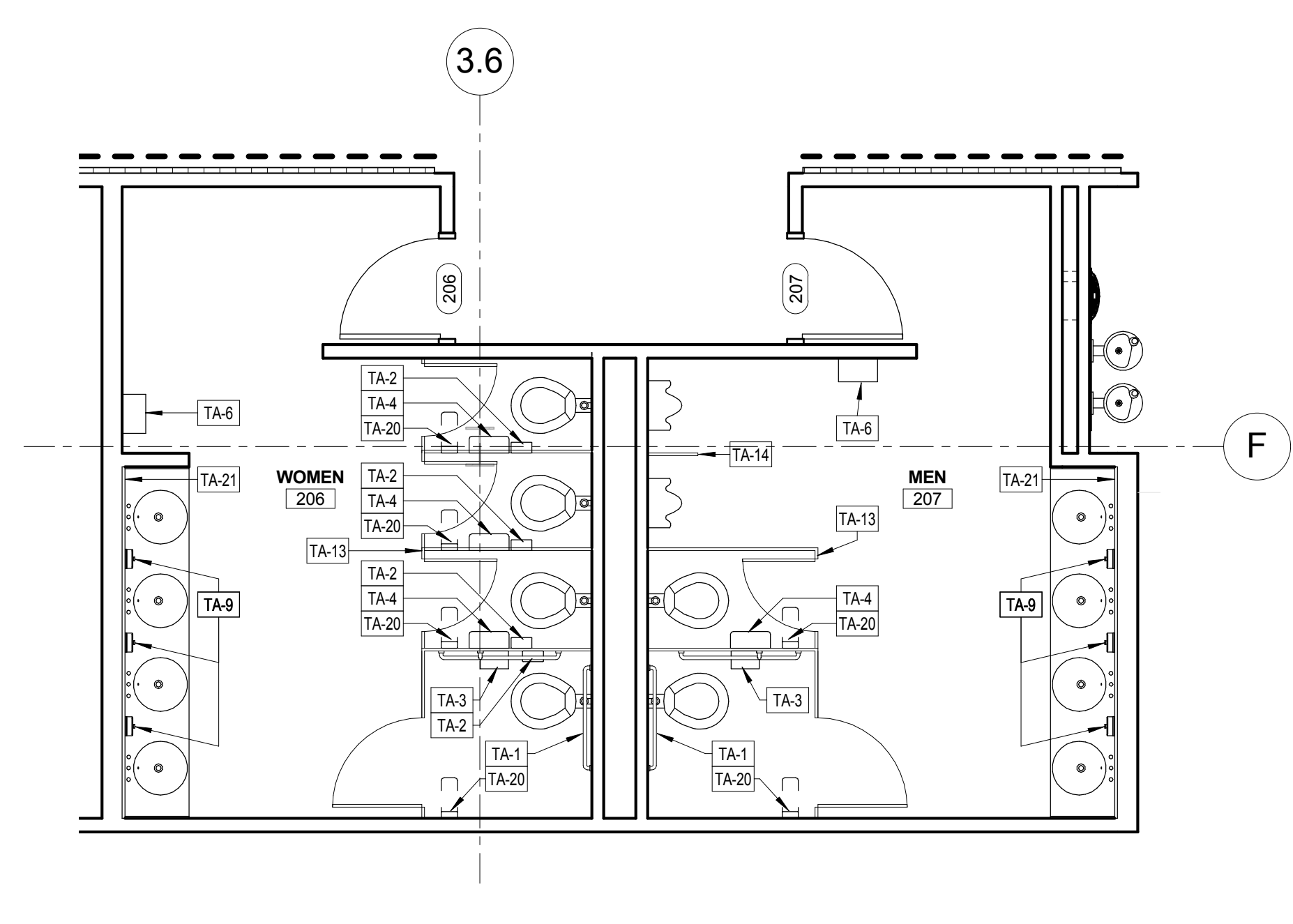
- GENERAL NOTES**
- FOR TOILET ACCESSORIES MOUNTING HEIGHTS REFER TO SHEET - A0002.
 - REFER TO FINISH PLANS & FINISH SCHEDULES ON SHEETS - A12xx FOR FINISHES.
 - ALL LOCKERS TO RECEIVE CLOSURE STRIPS AT SIDES AND TOPS.

TOILET ACCESSORIES	
TA Keynote	Description
TA-1	GRAB BARS
TA-2	SANITARY DISPOSAL
TA-3	ACCESSIBLE TOILET PAPER DISPENSER (OFO)
TA-4	TOILET PAPER DISPENSER (OFO)
TA-5	SHOWER CURTAIN ROD WITH CURTAINS
TA-6	ELECTRIC HAND DRYER
TA-7	ELECTRIC HAIR DRYER
TA-8	SANITARY SUPPLIES DISPENSER
TA-9	SOAP DISPENSER (OFO)
TA-10	TOWEL PIN
TA-11	LAVATORY MIRROR WITH SHELF
TA-12	FULL-LENGTH MIRROR
TA-13	TOILET PARTITION
TA-14	URINAL SCREENS
TA-15	BABY CHANGING TABLE
TA-17	SHOWER SEAT
TA-20	PURSE SHELF
TA-21	WALL-TO-WALL MIRROR OVER COUNTER
TA-23	PAPER TOWEL DISPENSER (OFO)

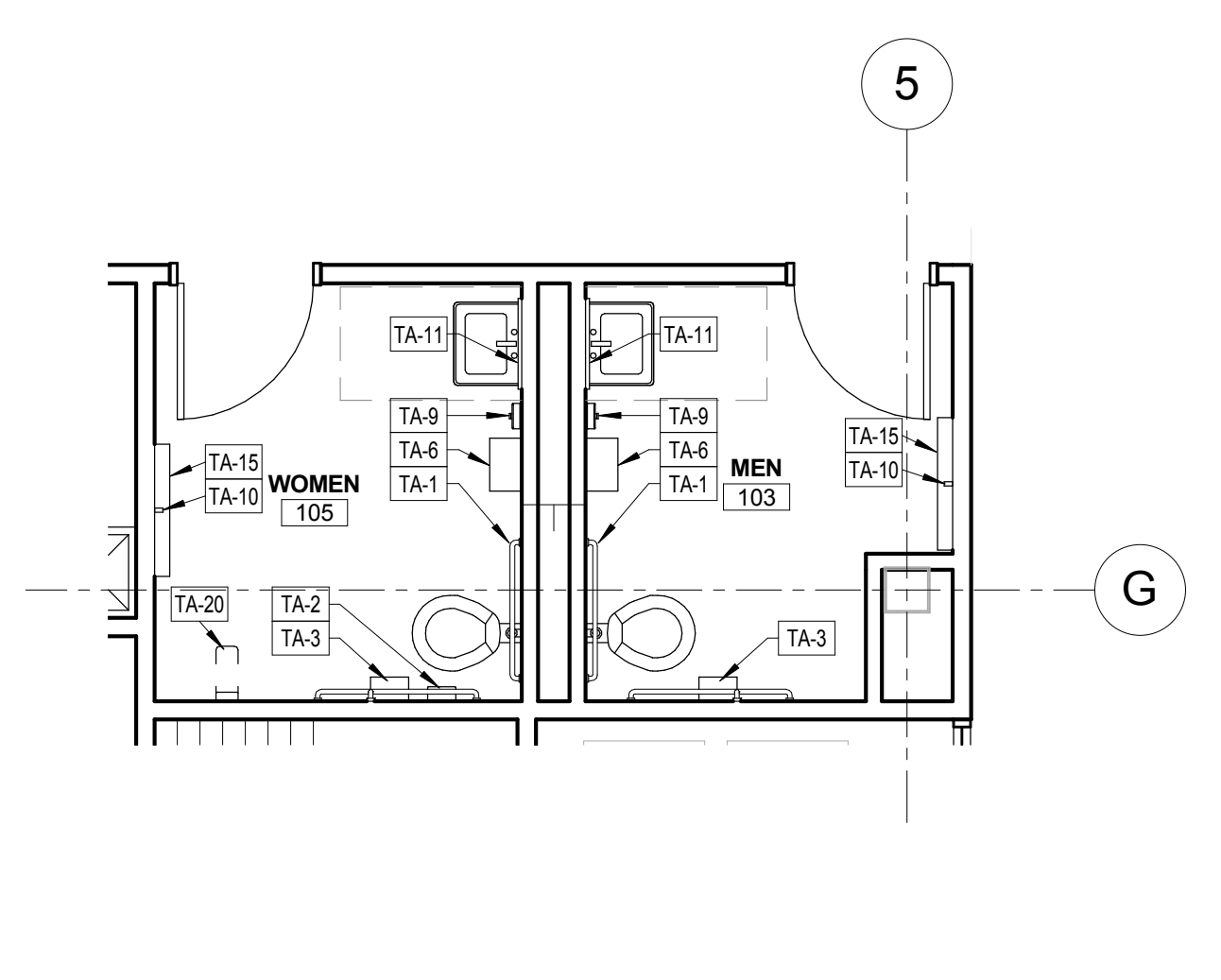
KEYED NOTES - TOILETS / LOCKERS / SHOWERS	
Key	Description
1	SINGLE-TIER LOCKER
2	DOUBLE-TIER LOCKERS



3 RESTROOMS - LEVEL 03
 1/4" = 1'-0"

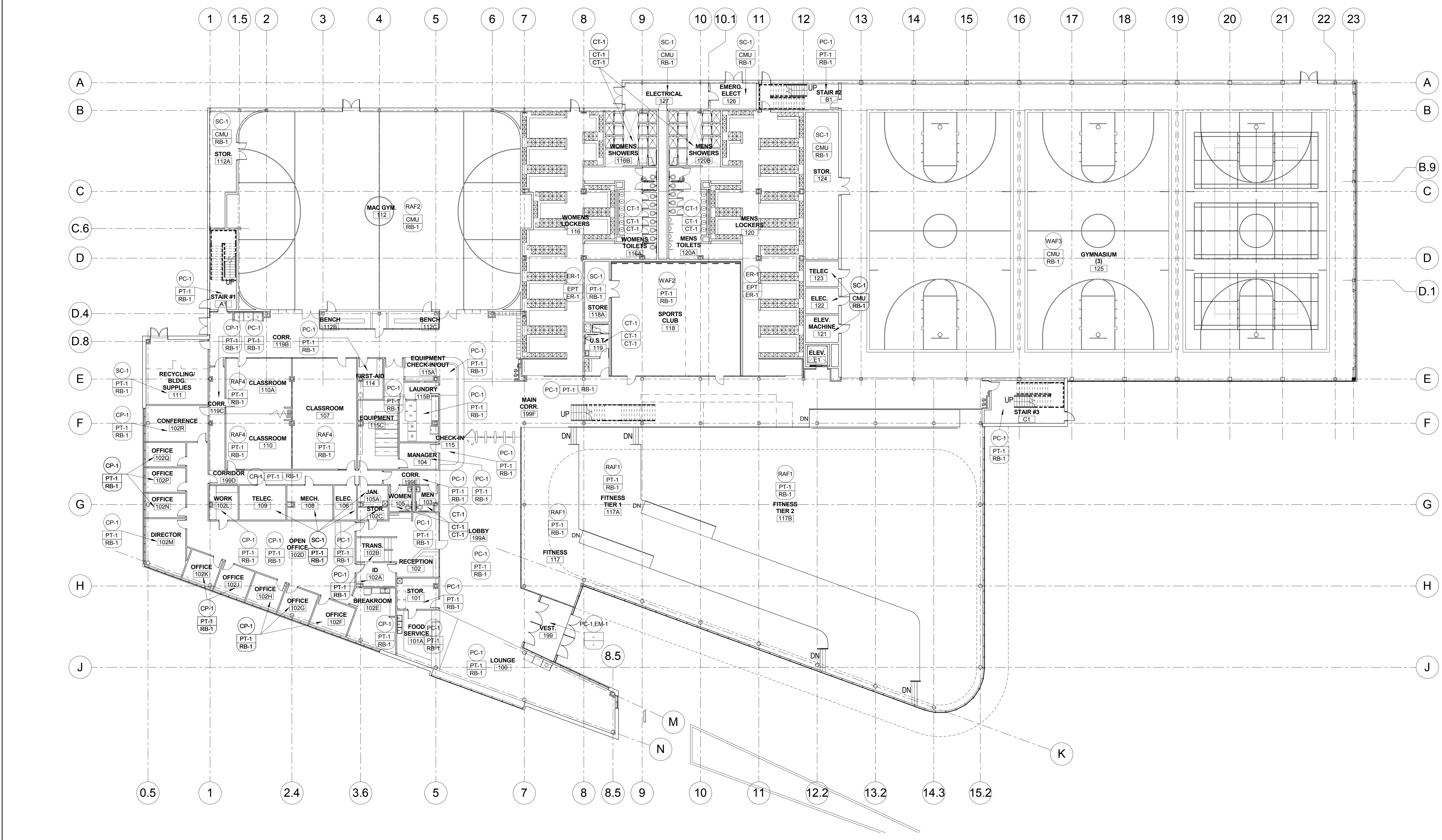


2 RESTROOMS - LEVEL 02
 1/4" = 1'-0"



1 RESTROOMS - LEVEL 01
 1/4" = 1'-0"

© Cannon Design 2010. All rights reserved. This document may be reproduced or translated in any form without prior written authorization by The Cannon Corporation.
 8/20/2011 8:47:38 PM

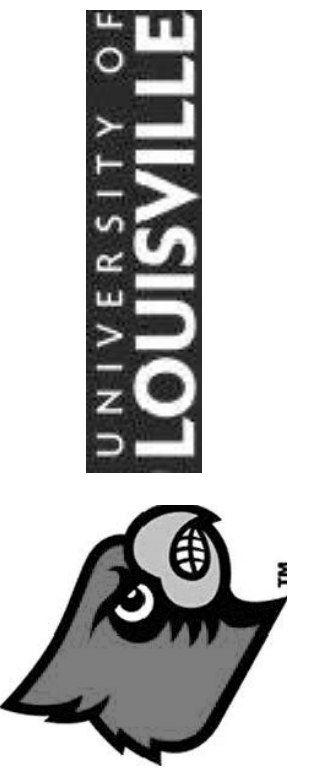


1 LEVEL 01 - FINISH FLOOR PLAN
1/16" = 1'-0"

RM #	ROOM NAME	FLOOR				CEILING				FINISH NOTES
		FIELD	ACCENT	FIELD	ACCENT	FIELD	ACCENT	FIELD	ACCENT	
100	LOUNGE	PC-1	RB-1	PT-1	APC-3,APC-4					
101	STOR.	PC-1	RB-1	PT-1	GB					
101A	FOOD SERVICE	PC-1	RB-1	PT-1	GB					
102	RECEPTION	PC-1	RB-1	PT-1	APC-2					
102A	ID	PC-1	RB-1	PT-1	APC-2					
102B	TRANS.	PC-1	RB-1	PT-1	APC-2					
102C	STOR.	PC-1	RB-1	PT-1						
102D	OPEN OFFICE	CP-1	RB-1	PT-1	APC-2					
102E	BREAKROOM	CP-1	RB-1	PT-1	APC-2					
102F	OFFICE	CP-1	RB-1	PT-1	APC-2					
102G	OFFICE	CP-1	RB-1	PT-1	APC-2					
102H	OFFICE	CP-1	RB-1	PT-1	APC-2					
102I	OFFICE	CP-1	RB-1	PT-1	APC-2					
102J	OFFICE	CP-1	RB-1	PT-1	APC-2					
102K	OFFICE	CP-1	RB-1	PT-1	APC-2					
102L	WORK	CP-1	RB-1	PT-1	APC-2					
102M	DIRECTOR	CP-1	RB-1	PT-1	APC-2					
102N	OFFICE	CP-1	RB-1	PT-1	APC-2					
102P	OFFICE	CP-1	RB-1	PT-1	APC-2					
102Q	OFFICE	CP-1	RB-1	PT-1	APC-2					
102R	CONFERENCE	CP-1	RB-1	PT-1	APC-2					
103	MEN	CT-1	CT-1	PT-1	APC-2					
104	MANAGER	PC-1	RB-1	PT-1	APC-2					
105	WOMEN	CT-1	CT-1	PT-1	APC-2					
105A	JAN.	SC-1	RB-1	PT-1						
106	ELEC.	SC-1	RB-1	PT-1						
107	CLASSROOM	RAF4	RB-1	PT-1	APC-2					
108	MECH.	SC-1	RB-1	PT-1						
109	TELEC.	SC-1	RB-1	PT-1						
110	CLASSROOM	RAF4	RB-1	PT-1	APC-2					
110A	CLASSROOM	RAF4	RB-1	PT-1	APC-2					
111	RECYCLING/ BLDG. SUPPLIES	SC-1	RB-1	PT-1						
112	MAC GYM.	RAF2	RB-1	CMU						
112A	STOR.	SC-1	RB-1	CMU						
112B	BENCH	RAF2	RB-1	CMU	GB					
112C	BENCH	RAF2	RB-1	CMU	GB					

RM #	ROOM NAME	FLOOR				CEILING				FINISH NOTES
		FIELD	ACCENT	FIELD	ACCENT	FIELD	ACCENT	FIELD	ACCENT	
114	FIRST-AID	PC-1	RB-1	PT-1						
115	CHECK-IN	PC-1	RB-1	PT-1						
115A	EQUIPMENT CHECK-IN/OUT	PC-1	RB-1	PT-1	GB					
115B	LAUNDRY	PC-1	RB-1	PT-1	APC-2					
115C	EQUIPMENT	PC-1	RB-1	PT-1	APC-2					
116	WOMENS LOCKERS	ER-1	ER-1	PT-1	APC-2					
116A	WOMENS TOILETS	CT-1	CT-1	PT-1	APC-2					
116B	WOMENS SHOWERS	CT-1	CT-1	PT-1	P					
117	FITNESS	RAF1	RB-1	PT-1						
117A	FITNESS TIER 1	RAF1	RB-1	PT-1						
117B	FITNESS TIER 2	RAF1	RB-1	PT-1						
118	SPORTS CLUB	WAF2	RB-1	PT-1	APC-1					
118A	STOR.	SC-1	RB-1	PT-1						
119	U.S.T.	CT-1	CT-1	PT-1	APC-2					
119B	CORR.	PC-1	RB-1	PT-1	APC-1					
119C	CORR.	CP-1	RB-1	PT-1	APC-1					
120	MENS LOCKERS	ER-1	ER-1	PT-1	APC-2					
120A	MENS TOILETS	CT-1	CT-1	PT-1	APC-2					
120B	MENS SHOWERS	CT-1	CT-1	PT-1	P					
121	ELEV. MACHINE	SC-1	RB-1	CMU						
122	ELEC.	SC-1	RB-1	CMU						
123	TELEC	SC-1	RB-1	CMU						
124	STOR.	SC-1	RB-1	CMU						
125	GYMNASIUM (3)	WAF3	RB-1	CMU						
126	EMERG. ELECT	SC-1	RB-1	CMU						
127	ELECTRICAL	SC-1	RB-1	CMU						
199	VEST.	PC-1,EM-1	-	-	GB					
199A	LOBBY	PC-1	RB-1	PT-1	APC-3,APC-4					
199D	CORRIDOR	CP-1	RB-1	PT-1	APC-1					
199E	CORR.	PC-1	RB-1	PT-1	APC-1					
199F	MAIN CORR.	PC-1	RB-1	PT-1	APC-1					
A1	STAIR #1	PC-1	RB-1	PT-1						
B1	STAIR #2	PC-1	RB-1	PT-1						
C1	STAIR #3	PC-1	RB-1	PT-1						
E1	ELEV.	PC-1	RB-1	PT-1						

Drawing Name: LEVEL 01 - FINISH PLAN
 U of L Project Number: 03667.00
 Project Number: August 16, 2011
 Date: Author Checked By: Checker
 Omni ARCHITECTS
 212 North Upper Street
 Lexington, Kentucky 40507-1001
 P: 859-252-6664 F: 859-253-2358
 www.omniarchitects.com
 CANNONDESIGN
 UNIVERSITY OF LOUISVILLE
 Revision Date



Revision Date

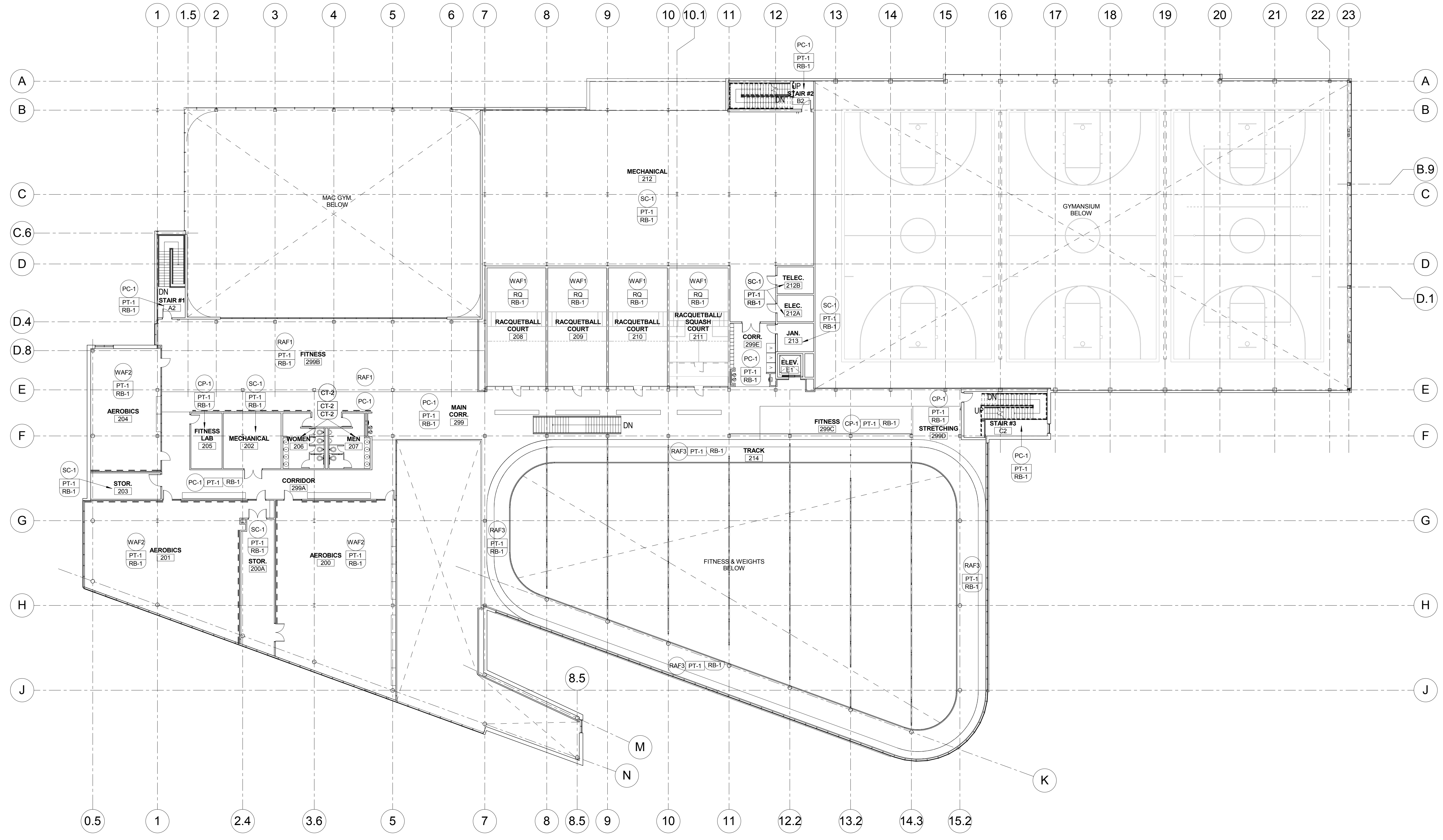
Drawing Name: LEVEL 02 - FINISH PLAN

U of L Project Number: 03667.00

Project Number: August 16, 2011

Date: Author Checked By: Checker

A1202



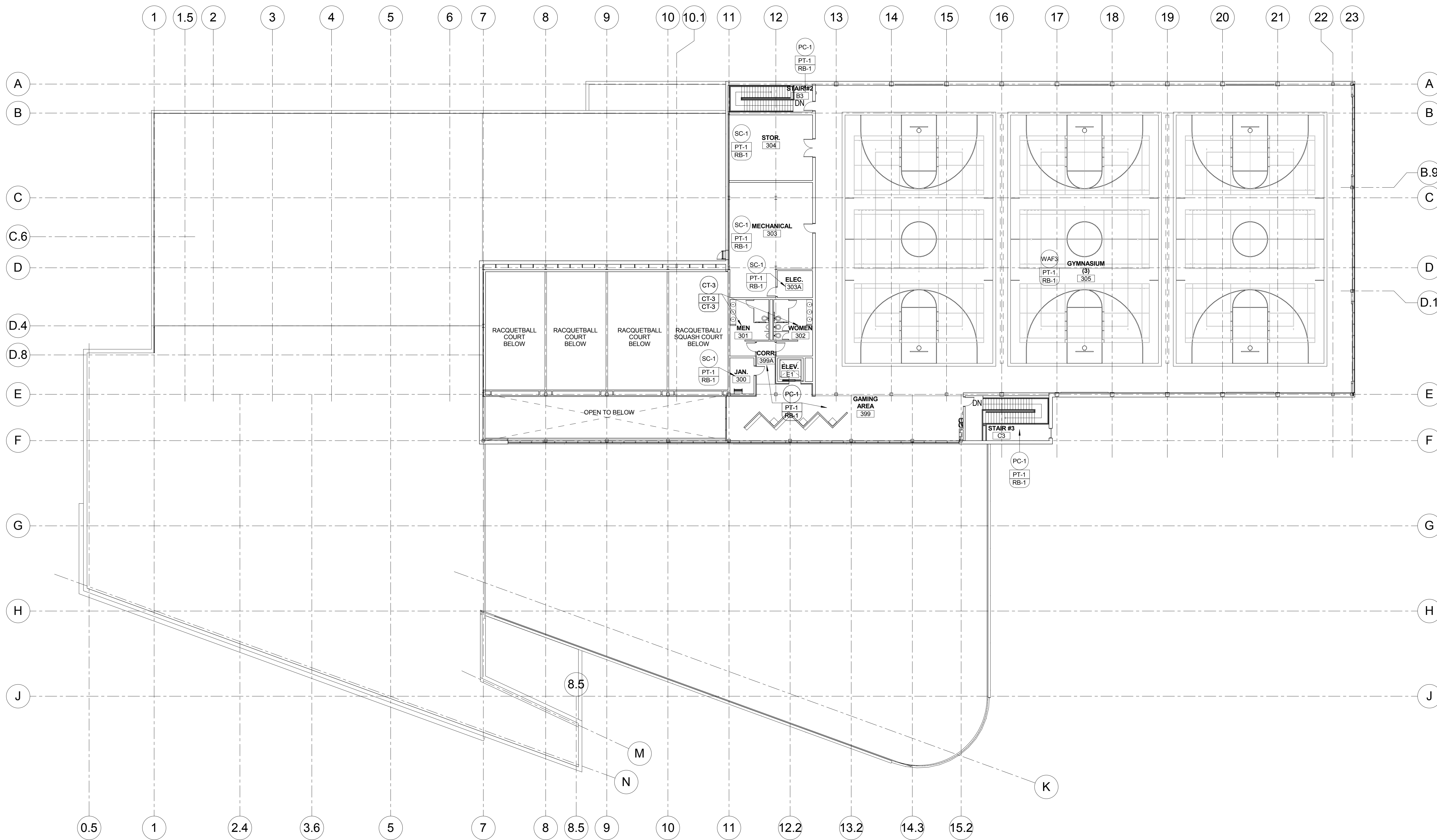
1 LEVEL 02 - FLOOR PLAN
1/16" = 1'-0"

RM #	ROOM NAME	FLOOR		BASE		WALL		CEILING		FINISH NOTES
		FIELD	ACCENT	FIELD	ACCENT	FIELD	ACCENT	FIELD	ACCENT	
200	AEROBICS	WAF2	RB-1	PT-1	PT-1	APC-1	GB			
200A	STOR	SC-1	RB-1	PT-1	PT-1	APC-1	GB			
201	AEROBICS	WAF2	RB-1	PT-1	PT-1	APC-1	GB			
202	MECHANICAL	SC-1	RB-1	PT-1	PT-1					
203	STOR	SC-1	RB-1	PT-1	PT-1					
204	AEROBICS	WAF2	RB-1	PT-1	PT-1	APC-1				
205	FITNESS LAB	CP-1	RB-1	PT-1	PT-1	APC-2				
206	WOMEN	CT-2	CT-2	CT-2	CT-2	APC-2				
207	MEN	CT-2	CT-2	CT-2	CT-2	APC-2				
208	RACQUETBALL COURT	WAF1	RB-1	RQ	RQ	GB				
209	RACQUETBALL COURT	WAF1	RB-1	RQ	RQ	GB				
210	RACQUETBALL COURT	WAF1	RB-1	RQ	RQ	GB				
211	RACQUETBALL/ SQUASH COURT	WAF1	RB-1	RQ	RQ	GB				
212	MECHANICAL	SC-1	RB-1	PT-1	PT-1					
212A	ELEC	SC-1	RB-1	PT-1	PT-1					
212B	TELEC	SC-1	RB-1	PT-1	PT-1					
213	JAN	SC-1	RB-1	PT-1	PT-1					
214	TRACK	RAF3	RB-1	PT-1	PT-1	GB				
299	MAIN CORR	PC-1	RB-1	PT-1	PT-1	APC-1				
299A	CORRIDOR	PC-1	RB-1	PT-1	PT-1	APC-1				
299B	FITNESS	RAF1	RB-1	PT-1	PT-1	APC-1				
299C	FITNESS	CP-1	RB-1	PT-1	PT-1	APC-1				
299D	STRETCHING	CP-1	RB-1	PT-1	PT-1	APC-1				
299E	CORR	PC-1	RB-1	PT-1	PT-1	APC-1				
A2	STAIR #1	PC-1	RB-1	PT-1	PT-1					
B2	STAIR #2	PC-1	RB-1	PT-1	PT-1					
C2	STAIR #3	PC-1	RB-1	PT-1	PT-1					

© Cannon Design 2010. This document may be reproduced or translated in any form without prior written authorization by The Cannon Corporation. 8/20/2011 8:47:48 PM

Revision #	Revision Date

Drawing Name:	LEVEL 03 - FINISH PLAN
U of L Project Number:	03667.00
Project Number:	August 16, 2011
Date:	
Drawn By:	Author
Checked By:	Checker



1 LEVEL 03 FLOOR PLAN
 1/16" = 1'-0"

FINISH SCHEDULE - LEVEL 3									
RM #	ROOM NAME	FLOOR		BASE		WALL		CEILING	
		FIELD	ACCENT	FIELD	ACCENT	FIELD	ACCENT	FIELD	ACCENT
300	JAN.	SC-1		RB-1		PT-1			
301	MEN	CT-3		CT-3		CT-3		APC-2	
302	WOMEN	CT-3		CT-3		CT-3		APC-2	
303	MECHANICAL	SC-1		RB-1		PT-1		GB	
303A	ELEC.	SC-1		RB-1		PT-1		GB	
304	STOR.	SC-1		RB-1		PT-1		GB	
305	GYMNASIUM (3)	WAF3		RB-1		PT-1			
399	GAMING AREA	PC-1		RB-1		PT-1		APC-1	
399A	CORR.	PC-1		RB-1		PT-1		APC-1	
B3	STAIR #2	PC-1		RB-1		PT-1			
C3	STAIR #3	PC-1		RB-1		PT-1		APC-1	

© Cannon Design 2010. All rights reserved. This document may be reproduced or translated into any form without prior written authorization by The Cannon Corporation.
 8/20/2011 8:47:52 PM