

**PLAN NOTES**

- ELEVATIONS SHOWN ARE TO THE TOP OF THE FOUNDATION AND ARE REFERENCED FROM FINISHED FIRST FLOOR REFERENCE ELEVATION 100'-0".
- FINISH TOP OF GRADE BEAMS TO RECEIVE PERMANENT INSULATED CONCRETE FORMS TO WITHIN 1/4" OF LEVEL.
- SEE DWG S-1.0 FOR GENERAL NOTES.
- SEE DWG S-3.1 FOR TYPICAL FOUNDATION DETAILS.
- SLAB ON GRADE SHALL BE PLACED ON 10 MIL POLYOLEFIN VAPOR RETARDER OVER 4" MINIMUM DENSE GRADED AGGREGATE.
- INSTALL 1/2" COMPRESSIBLE EXPANSION JOINT BETWEEN NEW SLAB ON GRADE AND ALL DOOR JAMBS & COLUMNS.
- ALL ICF WALL REINFORCEMENT SHALL BE SECURELY TIED PRIOR TO PLACEMENT OF CONCRETE.
- FOR ICF WALL CONSTRUCTION AT LEAST 7 DAYS FOLLOWING ICF CONCRETE POUR, BUT PRIOR TO PLACEMENT OF LOADS ON ICF WALLS, (2) 1"x1" SECTIONS OF INSULATION PER 50' OF ICF WALL LENGTH (ONE PER SIDE) SHALL BE REMOVED IN THE PRESENCE OF THE ENGINEER OR SPECIAL INSPECTOR FOR OBSERVATION OF CONCRETE WALL SURFACE TO VERIFY CONDITION OF CONCRETE WALLS (SPECIFIC LOCATIONS SHALL BE DETERMINED BY THE ENGINEER).

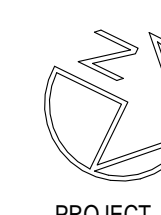
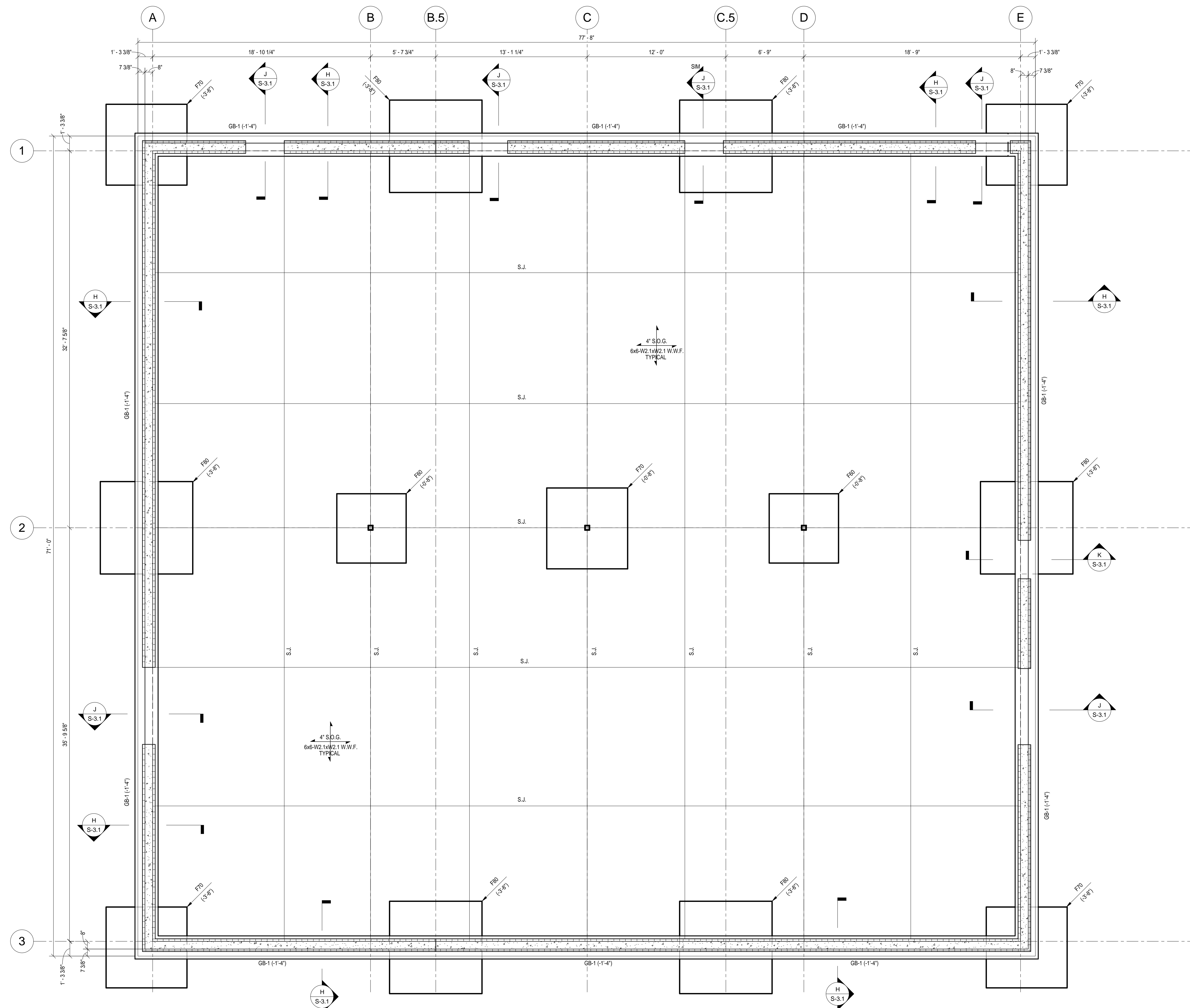
**LEGEND**

- F50 = SPREAD FOOTING FOUNDATION. SEE SCHEDULE THIS SHEET.
- (-1'-4") = TOP OF SPREAD FOOTING OR GRADE BEAM ELEVATION.
- S.J. = SAWN CONTRACTION JOINT. SEE DETAIL FS-3.1.
- C.J. = CONSTRUCTION JOINT. SEE DETAIL FIS-3.1 FOR SLABS ON GRADE.
- GB-1 = GRADE BEAM. SEE SCHEDULE ON DWG S-3.1.

- = ICF WALL REINFORCED W/ #5 VERT @ 18" O.C. #4 HORIZ @ 16" O.C. IF 16" TALL FORM

4,000 PSF

SPREAD FOOTING SCHEDULE		
MARK	SIZE	REINFORCING E.W. BOTTOM U.N.O.
F50	5'-0" x 5'-0" x 1'-6"	(6) #5
F60	6'-0" x 6'-0" x 1'-6"	(10) #5
F70	7'-0" x 7'-0" x 1'-6"	(11) #6
F80	8'-0" x 8'-0" x 1'-6"	(16) #6



PROJECT

FINISHED FIRST FLOOR REFERENCE ELEVATION 100'-0"  
SEA LEVEL DATUM ELEVATION 769.1'

Classification: **CLASSIFIED**  
 Caveats: **FOUO**  
 This drawing is intended For Official Use Only. Copy and distribution of this document is prohibited. Please properly dispose of this document.

**Boone Center, HRO Building**  
Frankfort, KY

REVISIONS	DATE	DESCRIPTION	DRAWING NO.
1			S-2.1
2			
3			
4			
5			
6			
7			
8			
9			

RECORD DATE JULY 2012		COMMONWEALTH OF KENTUCKY FINANCE AND ADMINISTRATION CABINET DIVISION OF ENGINEERING DEPARTMENT FOR FACILITIES MANAGEMENT FRANKFORT, KENTUCKY	REVIEWED DNV. OF ENGR.
DRAWN BY NAR			
CHECKED BY DK	212 North Upper Street Lexington, Kentucky 40507-1001 p 606.252.6664 f 606.252.2358 www.omniarchitects.com		ENGR. FILE NO 095-C88V-BH02-00
A & E FILE NO 12102.01	AGENCY AUTHORIZED AGENT DIVISION OF ENGINEERING		APPROVED FOR PROGRAM CONCEPT ONLY DATE _____
JULY 2012	APPROVED FOR PROGRAM CONCEPT ONLY DATE _____		

**FOUNDATION PLAN**  
 1/4" = 1'-0"