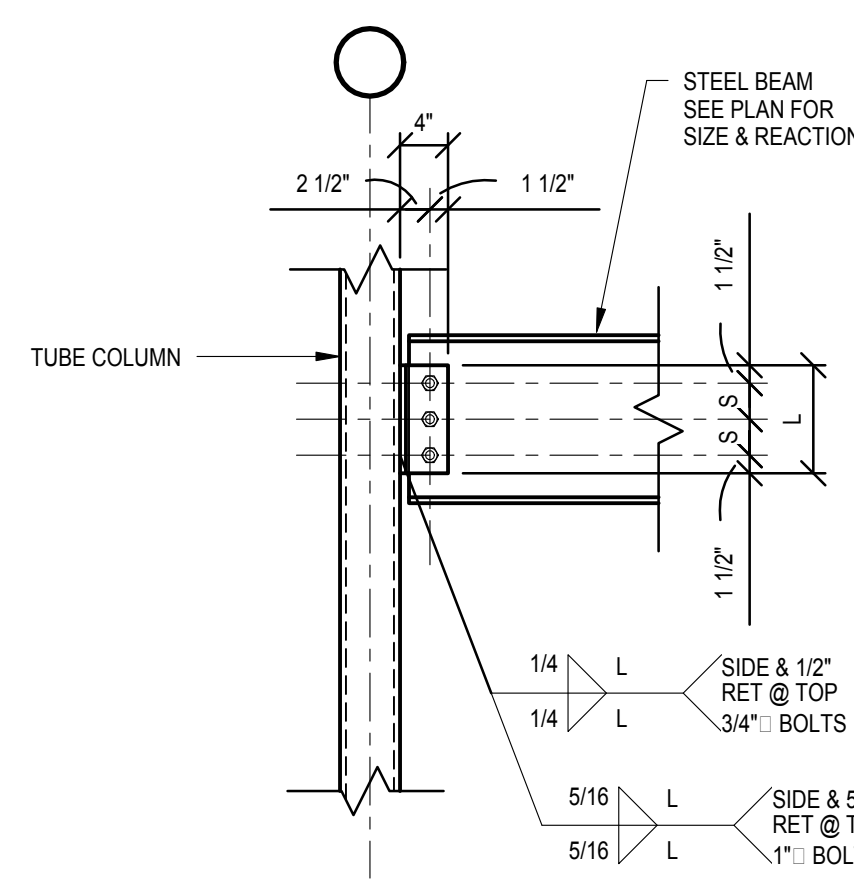


CONNECTION CAPACITY TABLE		
NO. OF BOLTS ASTM A325-N	LENGTH OF ANGLE L (INCHES)	CONNECTION CAP (KIPS)
2	5 1/2	14
3	8 1/2	32
4	11 1/2	53
5	14 1/2	76
6	17 1/2	101
7	20 1/2	125
8	23 1/2	148
9	26 1/2	167
10	29 1/2	186

- NOTES:
- ALL CONNECTION ANGLES ASTM A36, L4x3 1/2x5/16 LLO
 - ALL BOLTS ASTM A325-N, 3/4"Ø
 - ALL WELDS E70XX
 - BOLT SPACING (S) = 3"
 - SHORT HORIZONTAL SLOTTED HOLES MAY BE USED.

TYPICAL DOUBLE ANGLE SHEAR CONNECTION DETAIL

A S-4.1 NOT TO SCALE

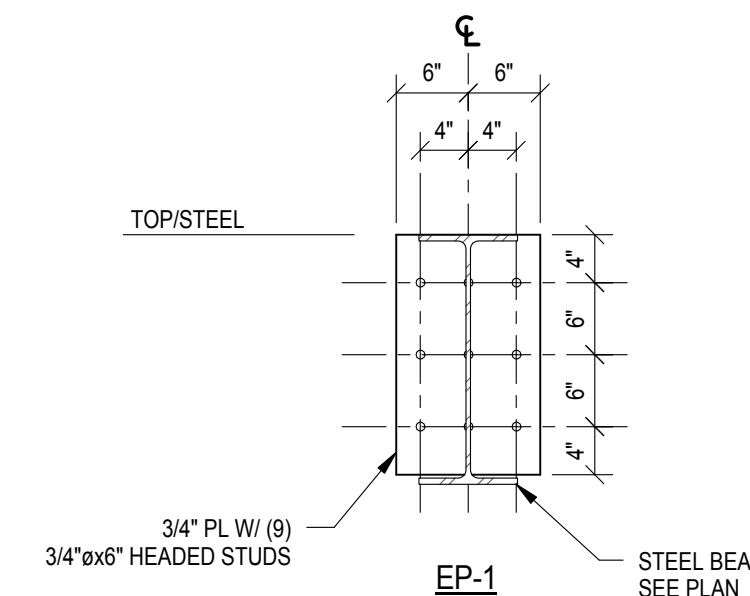


CONNECTION CAPACITY TABLE			
NO. OF BOLTS ASTM A325-N	LENGTH OF WT L (INCHES)	CONNECTION CAPACITY (KIPS)	
		3/4"Ø BOLTS	1"Ø BOLTS
2	6	8	14
3	9	16	29
4	12	26	46
5	15	36	63
6	18	46	76
7	21	56	88

- NOTES:
- USE ASTM A992, WT4x7.5 CONNECTIONS WITH 3/4" BOLTS
 - USE ASTM A992, ST4x11.5 CONNECTIONS WITH 1" BOLTS
 - ALL BOLTS ASTM A325-N
 - ALL WELDS E70XX
 - BOLT SPACING (S) = 3"
 - SHORT HORIZONTAL SLOTTED HOLES MAY BE USED.

TYPICAL WT SHEAR CONNECTION DETAIL

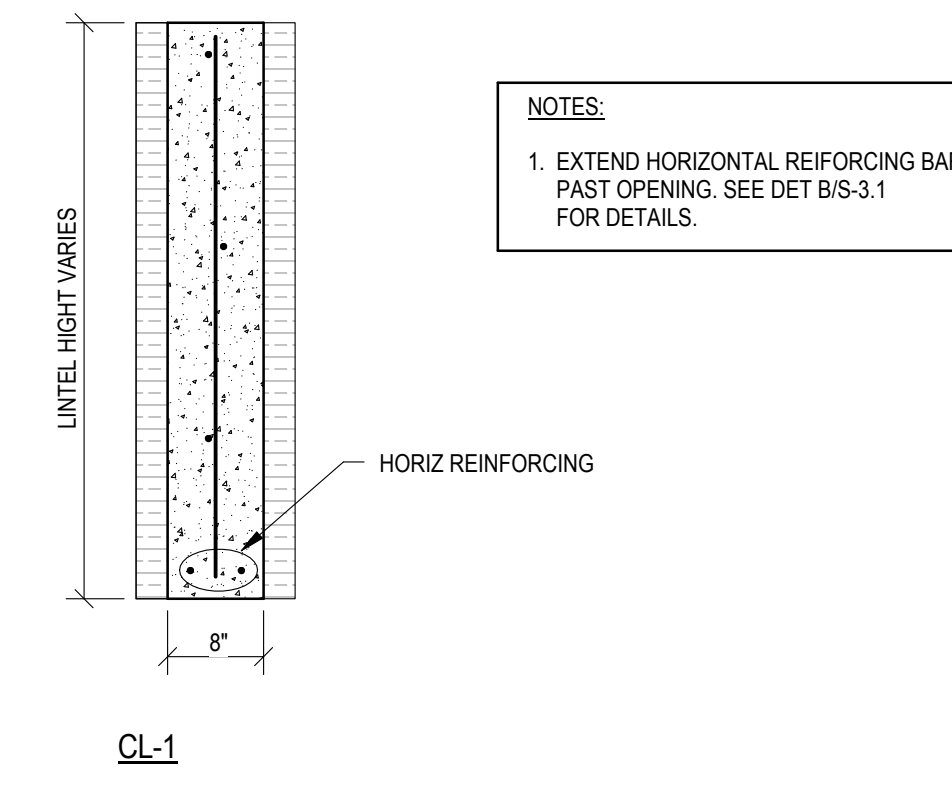
B S-4.1 NOT TO SCALE



- NOTES:
- EMBED PLATES AT I.C.F. WALLS SHALL HAVE INSULATION BEHIND PLATE REMOVED. MOUNT PLATE FLUSH WITH FACE OF INSULATION AND POUR WALL SOLID TO PLATE.
 - CONNECT BEAMS TO EMBED PLATES W/ DOUBLE ANGLE SHEAR CONNECTIONS.

TYPICAL EMBED PLATE DETAILS

C S-4.1 3/4" = 1'-0"



LINTEL SCHEDULE		
MARK	HORIZ REINFORCING	JAMB REINFORCING EACH SIDE OF OPENING
CL-1	(2) #5	(1) #5

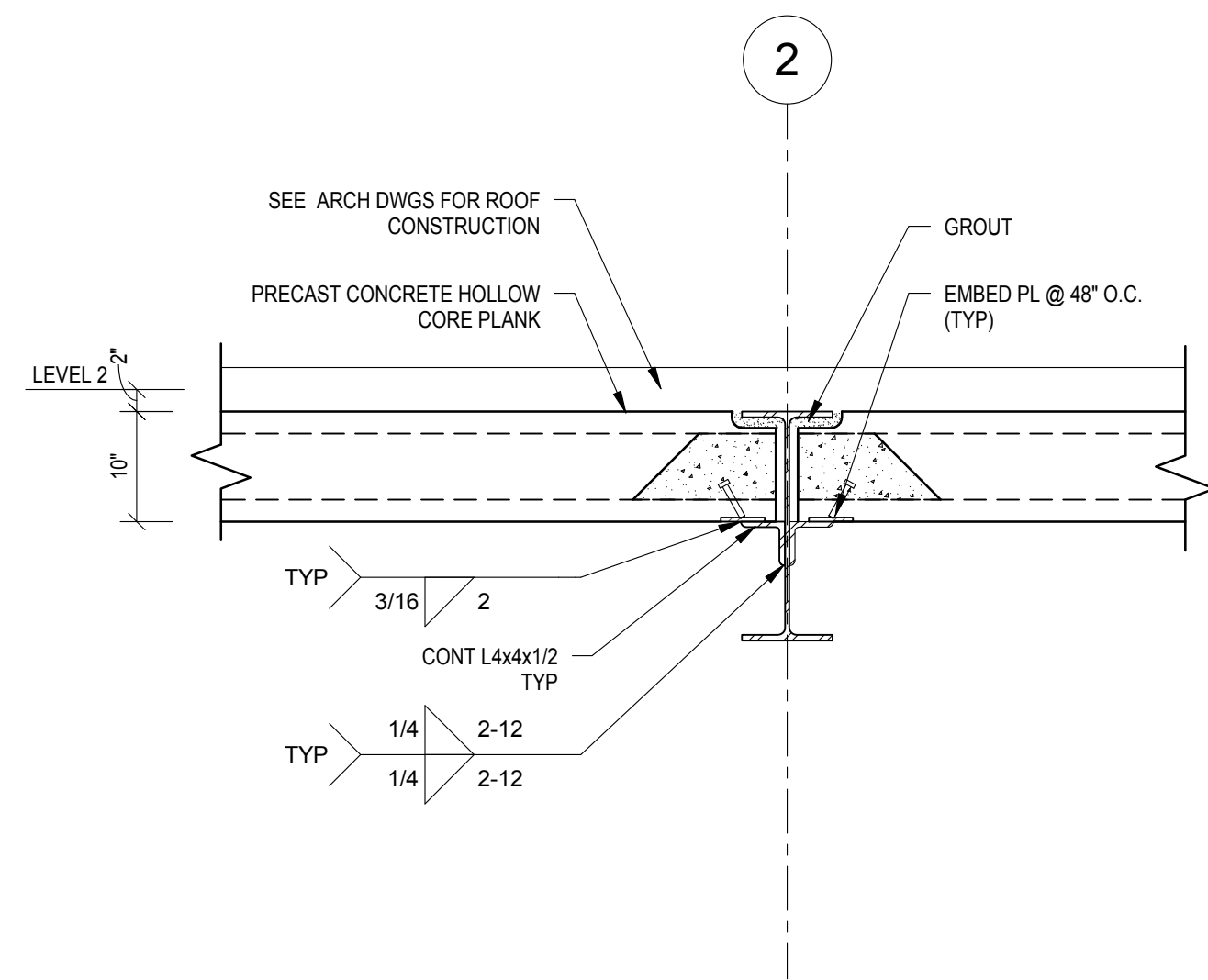
INSULATED CONCRETE WALL LINTEL SCHEDULE

D S-4.1 NOT TO SCALE

LINTEL SCHEDULE		
MARK	TYPE	SIZE
L-1	TYPE 1	GALV L6x4x3/8 (LLV)

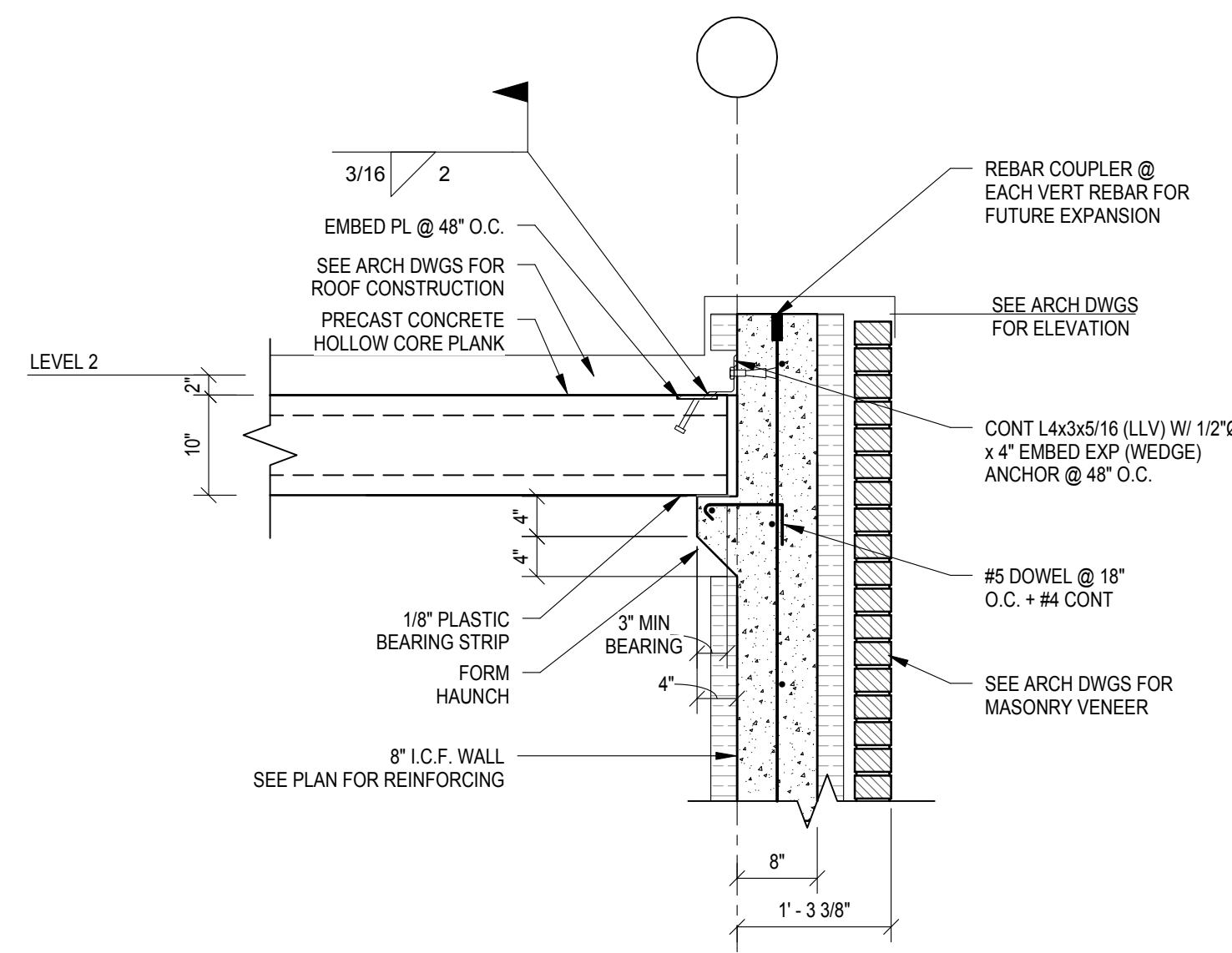
STEEL LINTEL SCHEDULE

E S-4.1 NOT TO SCALE



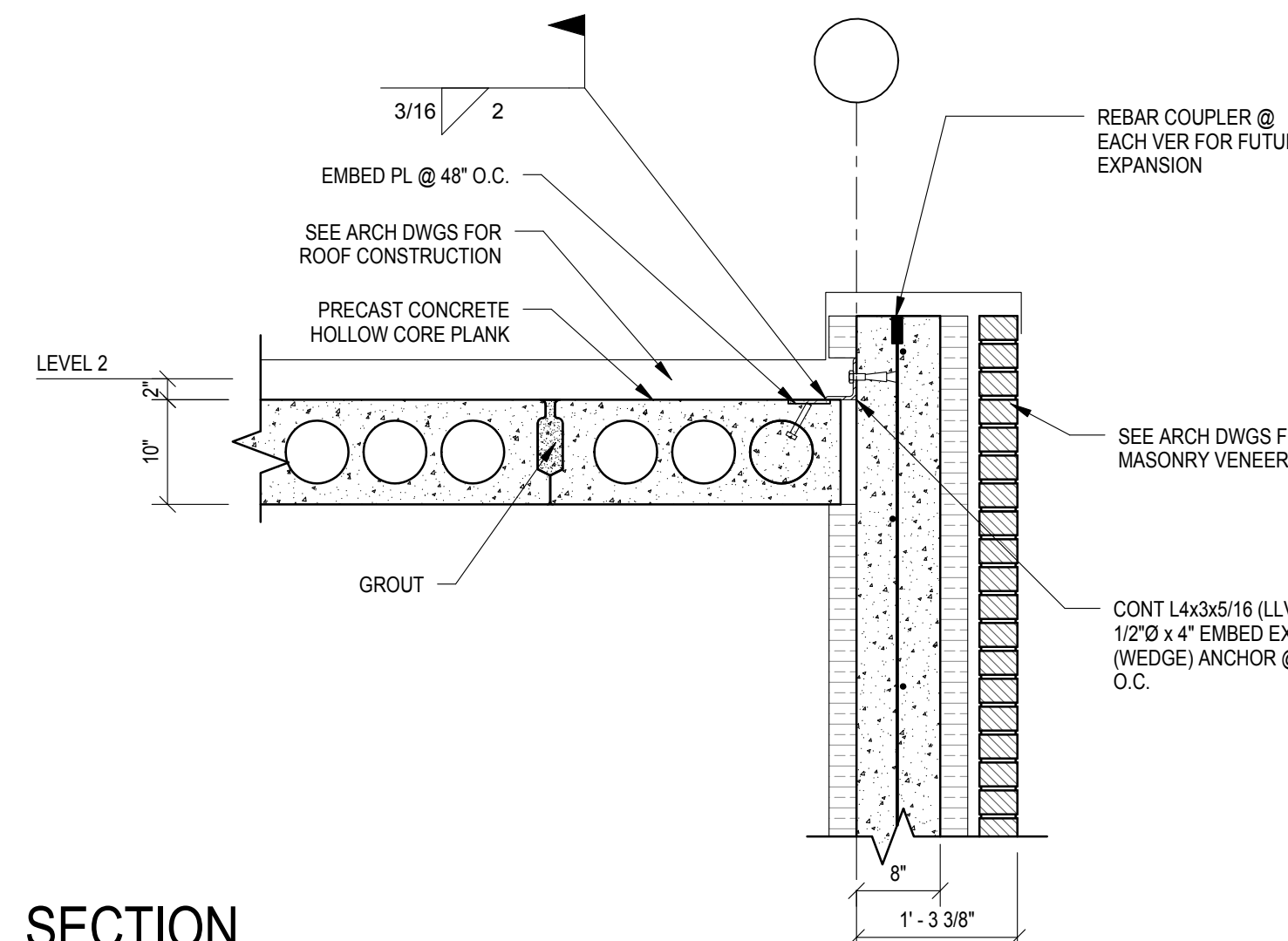
SECTION

F S-4.1 3/4" = 1'-0"



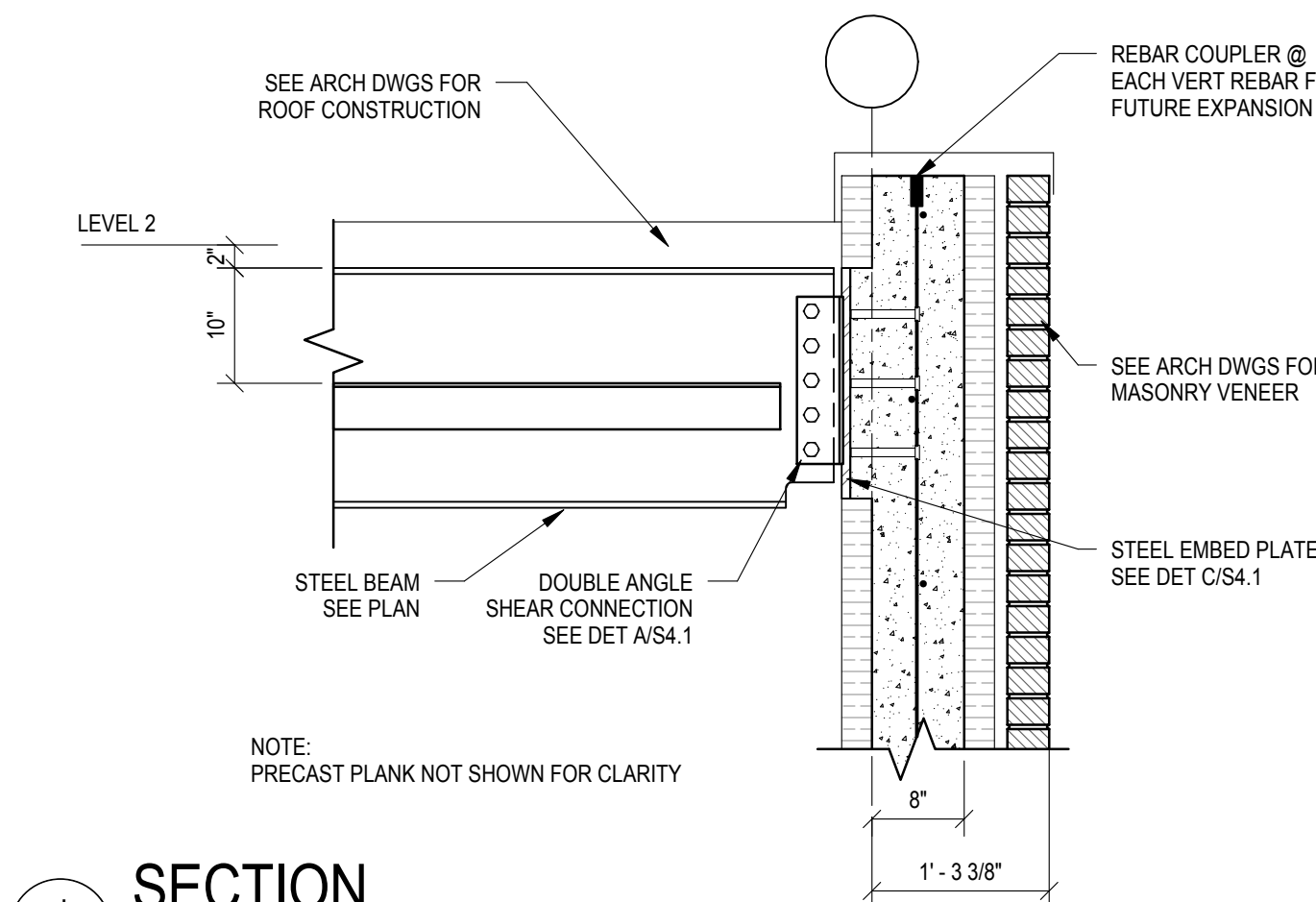
SECTION

G S-4.1 3/4" = 1'-0"



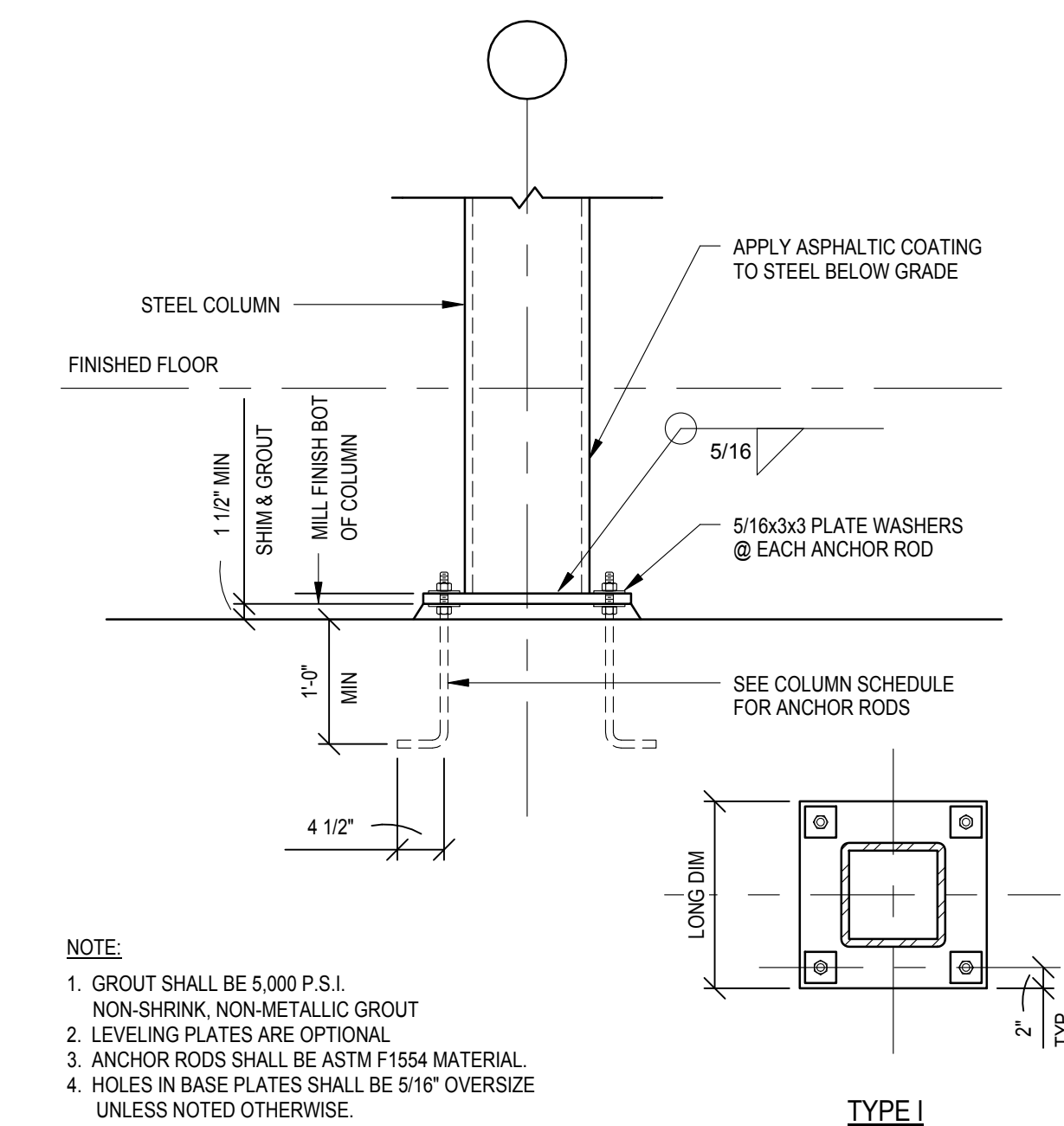
SECTION

H S-4.1 3/4" = 1'-0"



SECTION

J S-4.1 3/4" = 1'-0"



- NOTE:
- GROUT SHALL BE 5,000 P.S.I. NON-SHRINK, NON-METALLIC GROUT
 - LEVELING PLATES ARE OPTIONAL
 - ANCHOR RODS SHALL BE ASTM F1554 MATERIAL
 - HOLES IN BASE PLATES SHALL BE 5/16" OVERSIZE UNLESS NOTED OTHERWISE.

STEEL COLUMN BASE PLATE SETTING DETAIL

K S-4.1 3/4" = 1'-0"

COLUMN SCHEDULE (BASE BID)		
COLUMN MARK	B-2 D-2	C-2
FLOOR ELEVATION		
LEVEL 2 ELEV 13'-0"	2"	2"
LEVEL 1 ELEV 0'-0"	6 1/2"	6 1/2"
BASE PLATE	1x13x13	1 1/2x13x13
ANCHOR RODS	(4) 3/4"Ø	(4) 3/4"Ø
BASE PLATE TYPE	I	I
CAP PLATE	1/4	1/2

COLUMN SCHEDULE (ADD - ALT)		
COLUMN MARK	B-2 D-2 E-2	C-2 E-1-2
FLOOR ELEVATION		
LEVEL 2 ELEV 13'-0"	2"	2"
LEVEL 1 ELEV 0'-0"	6 1/2"	6 1/2"
BASE PLATE	1x13x13	1 1/2x13x13
ANCHOR RODS	(4) 3/4"Ø	(4) 3/4"Ø
BASE PLATE TYPE	I	I
CAP PLATE	1/4	1/2

- NOTES:
- ELEVATIONS SHOWN ARE TO THE BOTTOM OF THE BASE PLATE AND TOP OF CAP PLATE. SEE PLAN FOR TOP OF FOUNDATION OR PIER ELEVATION.
 - CAP PLATES SHALL BE WELDED TO COLUMN ALL AROUND WITH SEAL WELD U.N.O.

COLUMN SCHEDULE

L S-4.1 NOT TO SCALE

Classification: **CLASSIFIED**
 Caveats: **FOUO**
 This drawing is intended For Official Use Only. Copy and distribution of this document is prohibited. Please properly dispose of this document.

REVISIONS		DATE
1		
2		
3		
4		
5		
6		
7		
8		
9		

Boone Center, HRO Building Frankfort, KY Framing Details		DRAWING NO
RECORD DATE JULY 2012	COMMONWEALTH OF KENTUCKY FINANCE AND ADMINISTRATION CABINET DIVISION OF ENGINEERING DEPARTMENT FOR FACILITIES MANAGEMENT FRANKFORT, KENTUCKY	S-4.1
CHECKED BY DK	A & E FILE NO 12102.01	REVIEWED DNY, OF ENGR.
JULY 2012	ENGR. FILE NO 095-C88V-BH92-00	
AGENCY AUTHORIZED AGENT DIVISION OF ENGINEERING	APPROVED FOR PROGRAM CONCEPT ONLY DATE	DATE