

MICHAEL L. KNOLL
ARCHITECT
346 South Main Street
Vincennes, Kentucky 40393
Phone: 859-875-1000
Fax: 859-875-1000

HERRICK & ASSOCIATES
Consulting Engineers
LENGSTON, KY
625.251.0482

The McGowan Company
Commercial Real Estate

PROJECT:
LEXINGTON LOFTS
200 BELLAVAR STREET
LEXINGTON, KENTUCKY

DRAWING:
FIRST FLOOR ELECTRICAL PLAN

DATE: 1/10/03
DRAWN BY: LH
REVISIONS:

SHEET NO.
E-2

General Notes E2

1. Wiring in public spaces to be in EMT unless otherwise noted
2. Type LF-A lights to be chain hung below duct and feeder conduits; drop CU cable to light from Jbox above
3. In general, conduit serving corridor lighting and receptacles is to be run in corridor space (not through apartments). Branch circuit wiring is #12 unless otherwise noted
4. Provide pull boxes as required on all panel feeder conduits is to be run in corridor space (not through apartments).
5. Feeders from distribution panels to apartment panels may be in PVC-40
6. Provide fire stopping at all floor penetrations
7. Observe ADA restrictions in handicap apts. and Public areas
8. Coordinate installation of TV wiring with Insight cable Co. (Ralph McDonie)

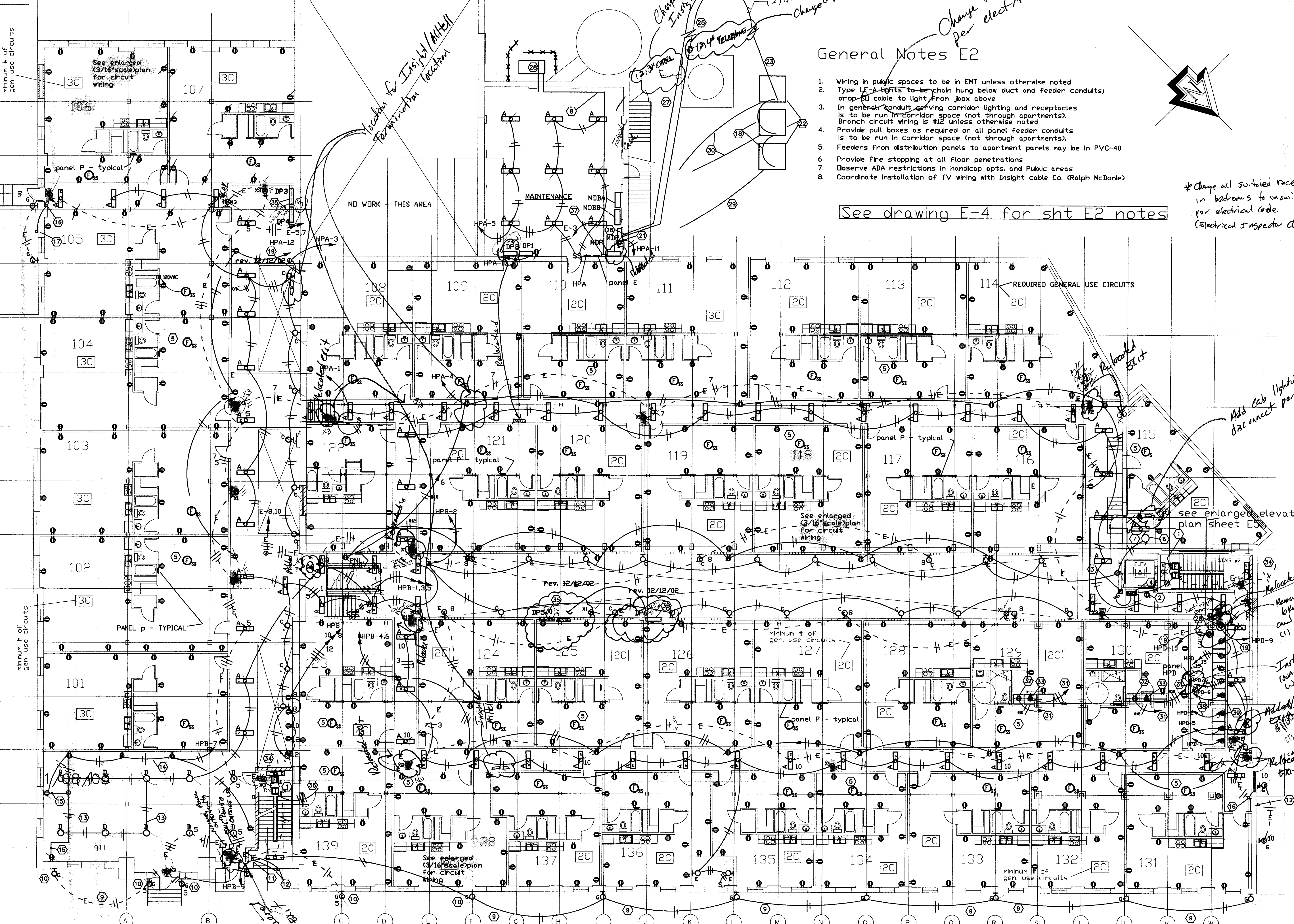
See drawing E-4 for sht E2 notes

*Change all switched receptacles in bedrooms to unswitched per electrical code (Electrical Inspector change)

minimum # of gen. use circuits

minimum # of gen. use circuits

minimum # of gen. use circuits



PLAN
SCALE: 1/8"=1'0"

AS-BUILT DRAWING