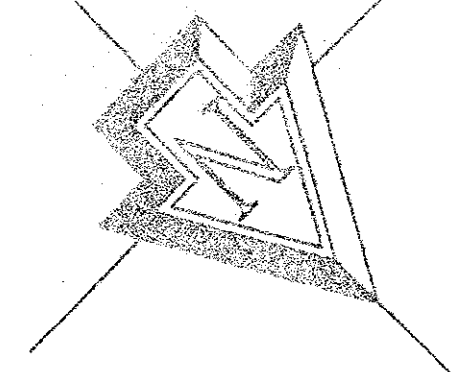


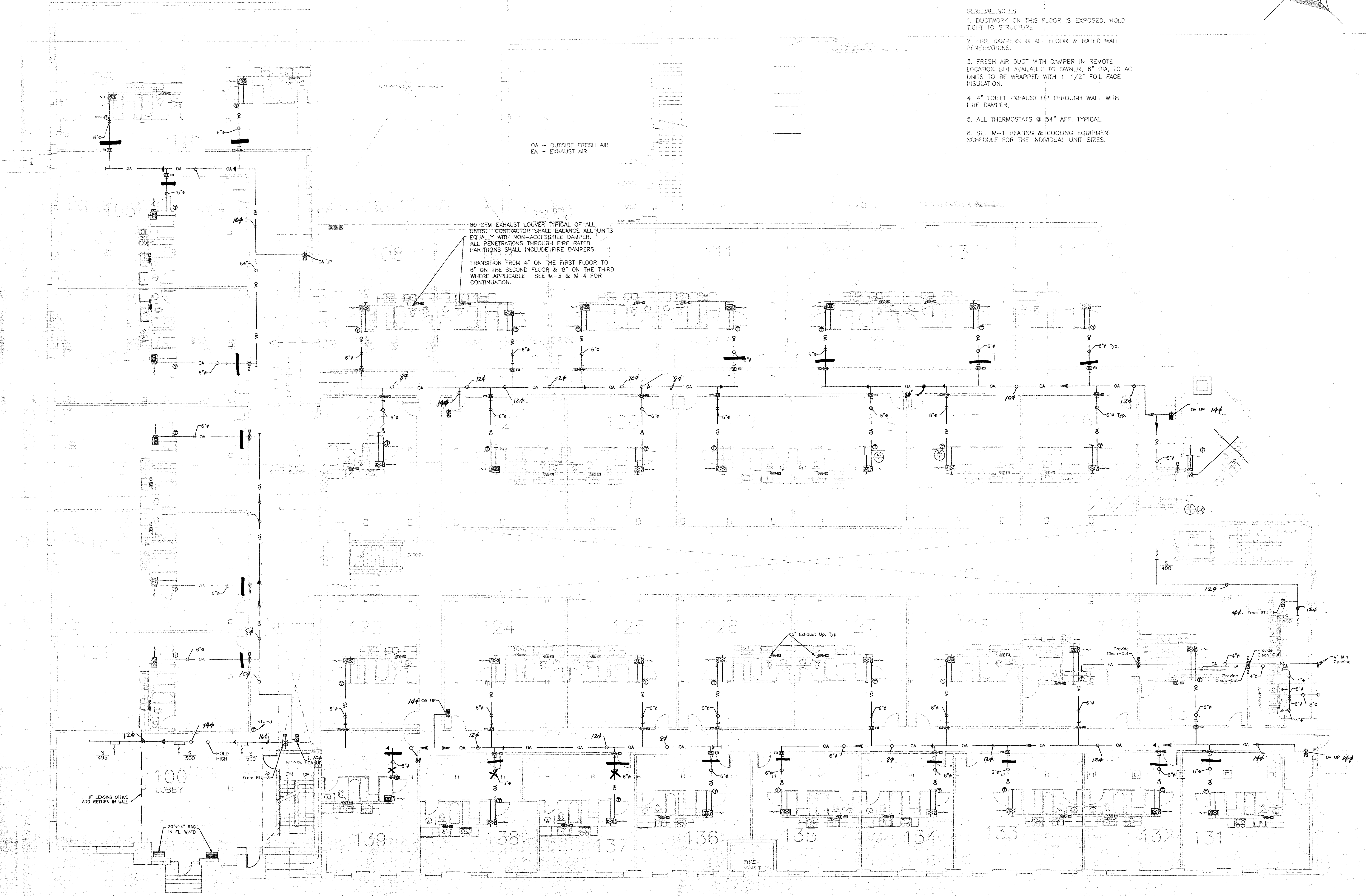
RECEIVED  
JUN 9 9 2003



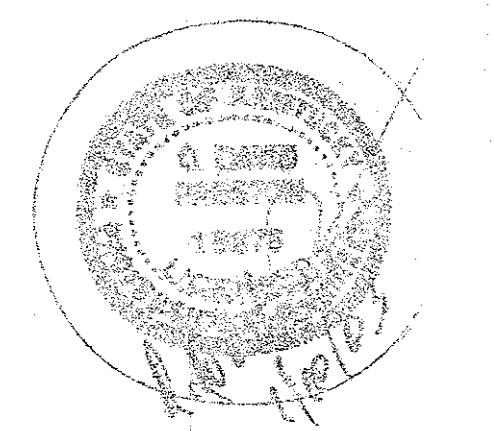
- GENERAL NOTES
1. DUCTWORK ON THIS FLOOR IS EXPOSED, HOLD TIGHT TO STRUCTURE.
  2. FIRE DAMPERS @ ALL FLOOR & RATED WALL PENETRATIONS.
  3. FRESH AIR DUCT WITH DAMPER IN REMOTE LOCATION BUT AVAILABLE TO OWNER, 6" DIA. TO AC UNITS TO BE WRAPPED WITH 1-1/2" FOIL FACE INSULATION.
  4. 4" TOILET EXHAUST UP THROUGH WALL WITH FIRE DAMPER.
  5. ALL THERMOSTATS @ 54" AFF, TYPICAL.
  6. SEE M-1 HEATING & COOLING EQUIPMENT SCHEDULE FOR THE INDIVIDUAL UNIT SIZES.

OA - OUTSIDE FRESH AIR  
EA - EXHAUST AIR

60 CFM EXHAUST LOUVER TYPICAL OF ALL UNITS. CONTRACTOR SHALL BALANCE ALL UNITS EQUALLY WITH NON-ACCESSIBLE DAMPER. ALL PENETRATIONS THROUGH FIRE RATED PARTITIONS SHALL INCLUDE FIRE DAMPERS.  
TRANSITION FROM 4" ON THE FIRST FLOOR TO 6" ON THE SECOND FLOOR & 8" ON THE THIRD WHERE APPLICABLE. SEE M-3 & M-4 FOR CONTINUATION.



AS-BUILT DRAWING



MICHAEL L. KNOLL  
ARCHITECT  
346 South Main Street  
Versailles, Kentucky 40383  
Phone: 659-672-1590  
Email: mknoll@earthlink.net

HERRICK & ASSOCIATES  
LEXINGTON KY  
DESIGN-ENGINEERING  
LEXINGTON KY 40517  
D. DAVID PRESTON, P.E.

The McGowan Company  
Commercial Real Estate

PROJECT: MCGOWAN DEVELOPMENT  
LEXINGTON LOFTS  
200 BOLIVAR STREET  
LEXINGTON, KENTUCKY  
DRAWING: FIRST FLOOR HVAC PLAN

DATE:	1/10/03
DRAWN BY:	MLK
REVISIONS:	

SHEET NO. M-2

Doc # 34224  
C-1  
234