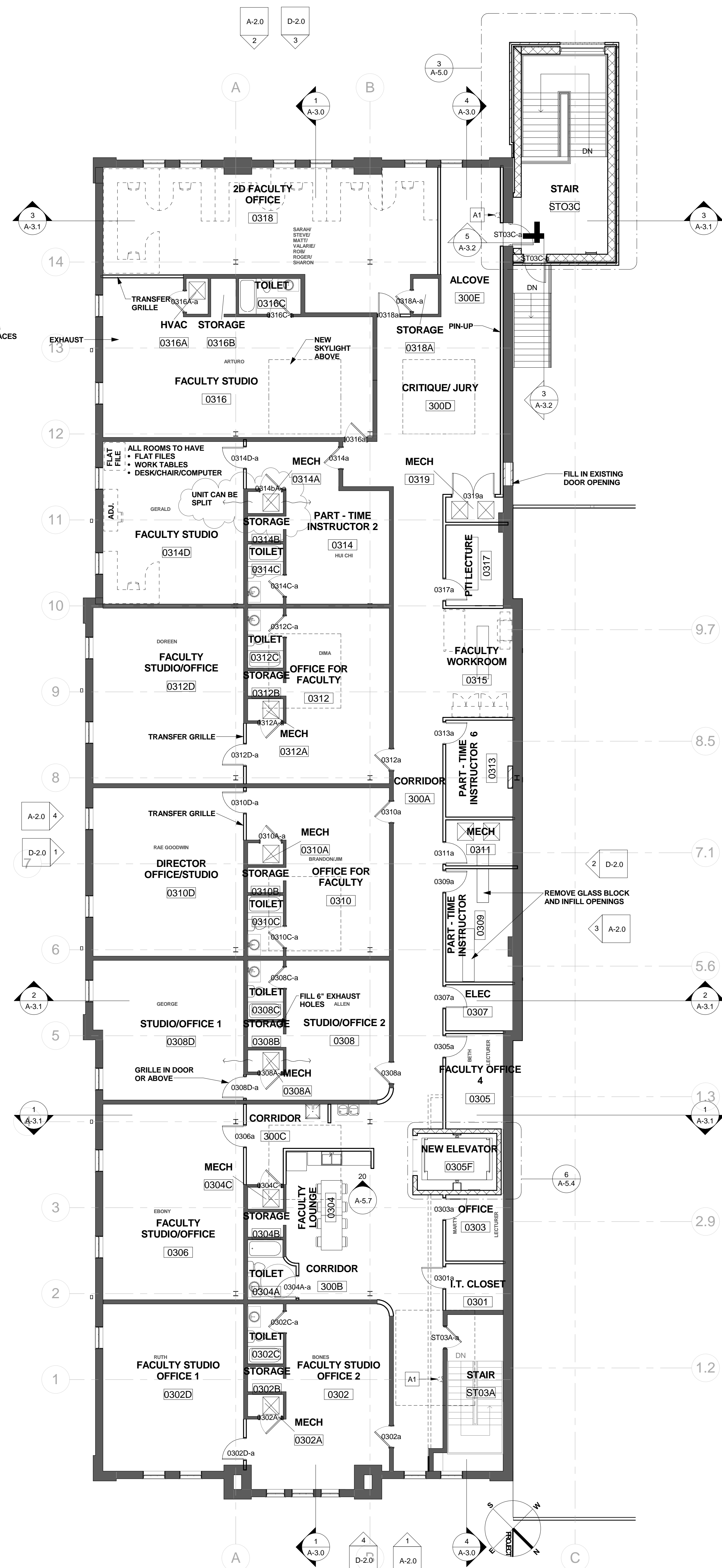
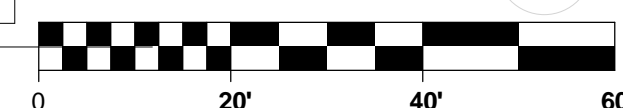


NOTES:
 • CENTRALIZED PRINTING
 • TACKABLE WALL SURFACES
 IN ALL OFFICE/STUDIOS



1 3RD LEVEL FLOOR PLAN - CONCEPT C
 A-1.3 1/8" = 1'-0"



NO.	DESCRIPTION	ACCESSORY SCHEDULE		PROVIDER	MOUNTING HEIGHT	REMARKS
		MANUFACTURER/MODEL	DIMENSIONS			
10	SOLID SURFACING SPLASH GUARD					
A1	FIRE EXTINGUISHER W/BACKET	LARSENS: MPS1521	N/A	C.F.C.I.	4'-0" A.F.F. TO F.E. HANDLE	A, B, C, CLASS RATED
A2	MARKER BOARD	CLARIDGE: SERIES, TYPE 4 LCS	4'-0" HIGH X 4'-0" WIDE	C.F.C.I.	7'-0" TO TOP	WITH MAP RAIL AND MARKER TRAY
A3	MARKER BOARD	CLARIDGE: SERIES, TYPE 4 LCS	4'-0" HIGH X 6'-0" WIDE	C.F.C.I.	7'-0" TO TOP	WITH MAP RAIL AND MARKER TRAY
A4	MARKER BOARD	CLARIDGE: SERIES, TYPE 4 LCS	4'-0" HIGH X 8'-0" WIDE	C.F.C.I.	7'-0" TO TOP	WITH MAP RAIL AND MARKER TRAY
A5	MARKER BOARD	CLARIDGE: SERIES, TYPE 4 LCS	4'-0" HIGH X 14'-0" WIDE	C.F.C.I.	7'-0" TO TOP	WITH MAP RAIL AND MARKER TRAY
A6	MARKER BOARD	CLARIDGE: SERIES, TYPE 4 LCS	4'-0" HIGH X 16'-0" WIDE	C.F.C.I.	7'-0" TO TOP	WITH MAP RAIL AND MARKER TRAY
A7	TACK BOARD		4'-0" HIGH X 4'-0" WIDE	C.F.C.I.	7'-0" TO TOP	
A8	PROJECTION SCREEN WALL MOUNTED	DRAPER: SILHOUETTE/ SERIES E	4'-0" HIGH X 8'-0" WIDE	C.F.C.I.	BOTTOM OF SCREEN FULLY DROPPED IS 3'-0" A.F.F.	ELECTRIC
A9	PROJECTION SCREEN WALL MOUNTED	DRAPER: SILHOUETTE/ SERIES E	8'-0" HIGH X 10'-0" WIDE	C.F.C.I.	BOTTOM OF SCREEN FULLY DROPPED IS 3'-0" A.F.F.	ELECTRIC
A10	GAS CYLINDER BRACKETS (PAIR PER CYLINDER)	TROEMER: 715/717	N/A	C.F.C.I.	SEE 15 & 16 A-5.8	PROVIDE QUANTITY SHOWN ON PLAN
A12	TELEVISION		54"	O.F.O.I.		ELECTRIC

GENERAL NOTES

SEE A-1.0a THRU A-1.3a FOR DIMENSIONS
 SEE D-1.0 THRU D-1.3 FOR ADDITIONAL FINISH
 AND SURFACE PREPARATION REQUIREMENTS
 SEE A-2.0 AND A-2.1 FOR EXTERIOR WORK
 SEE A-10.0 THRU A-10.3 FOR FURNITURE PLANS
 SEE A-9.1 FOR INTERIOR FINISHES

UNIVERSITY LOFTS - Renovate Academic Facility UK School of Art & Visual Studies

THIRD FLOOR PLAN

NOT FOR CONSTRUCTION Job Number: 1205 Date: 05/2013

Drawn By: MJ

Checked By: EZ

Revision: 1



212 North Upper Street
 Lexington, Kentucky 40507-1001
 p: 606.252.2222
 www.omniarchitects.com

This Drawing and the Design shown thereon are the property of Omni Architects. The reproduction, copying or other use of this drawing without the written consent of Omni Architects is prohibited.

PHASE 3 - CONSTRUCTION DOCUMENTS
 50% REVIEW SUBMITTAL

A-1.3