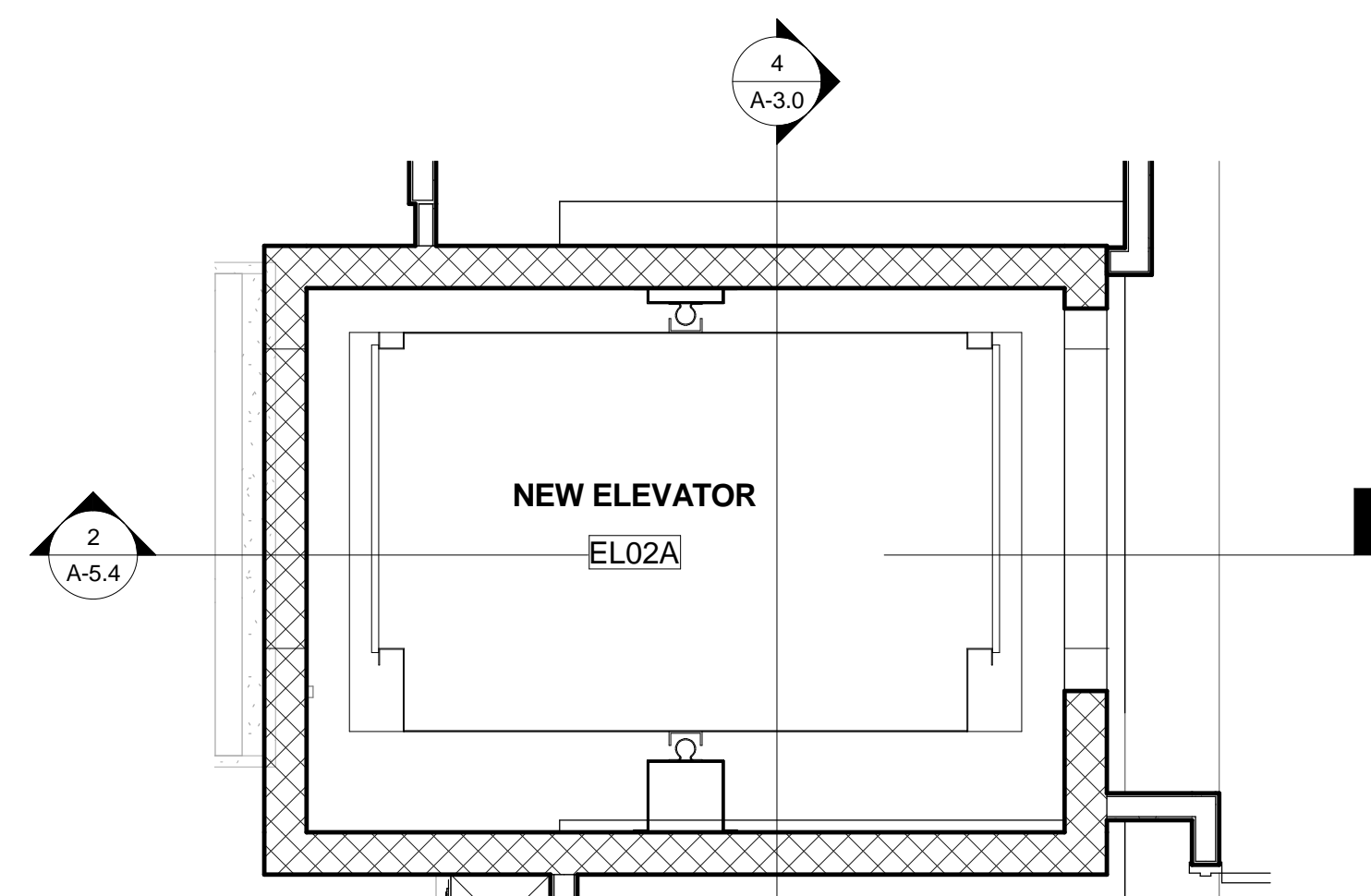
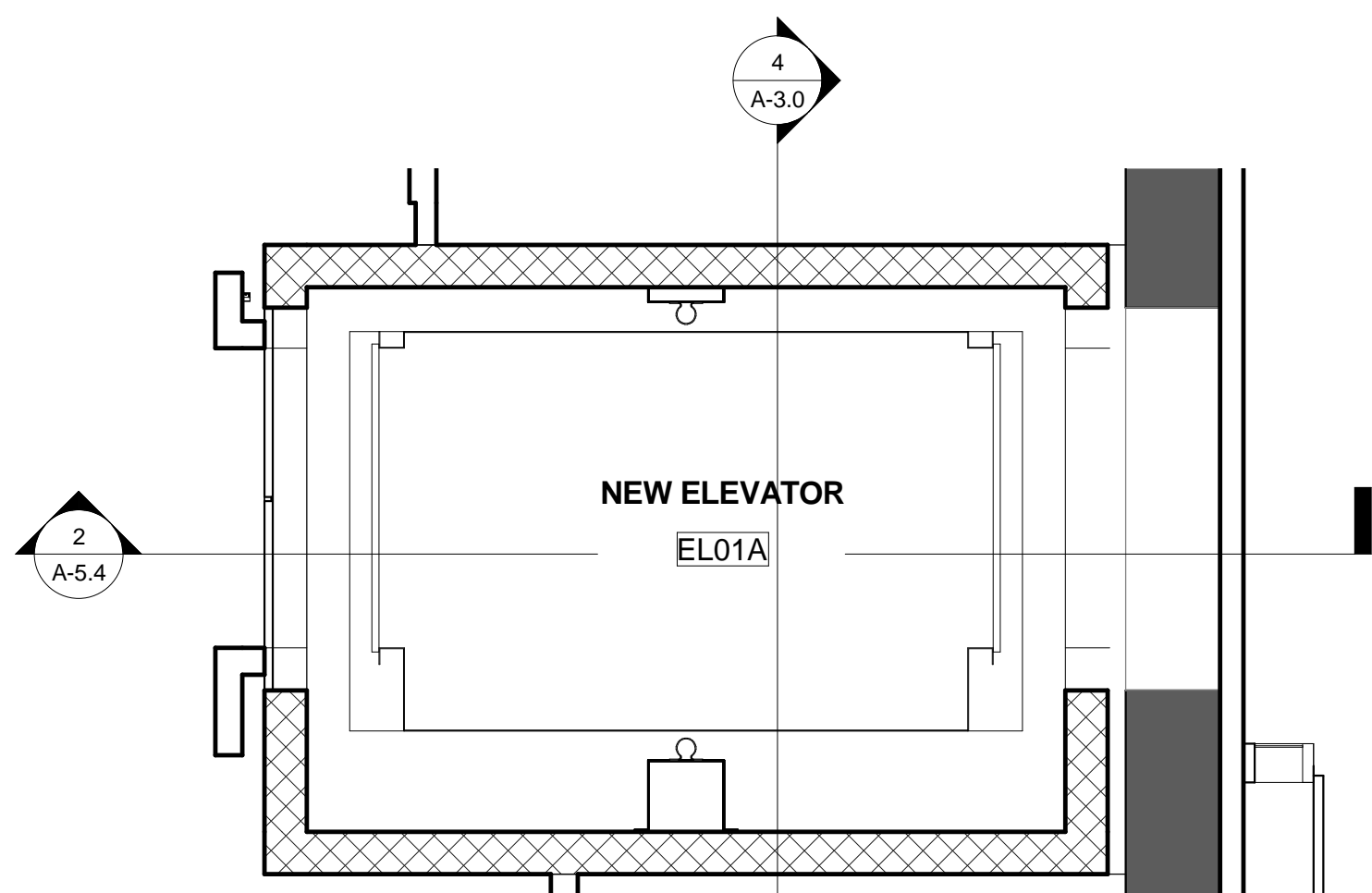


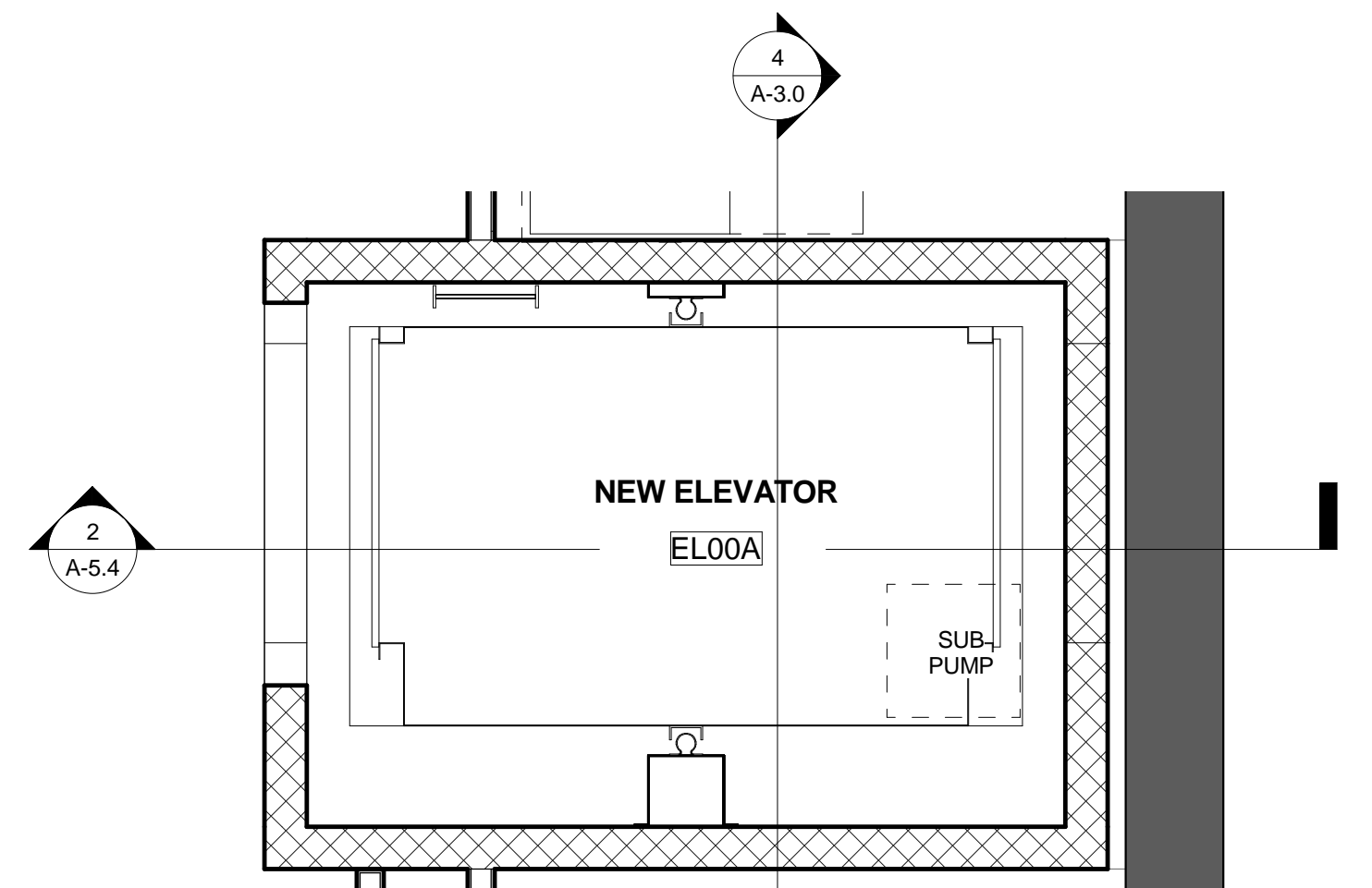
6 ENLARGED PLAN - ELEVATOR THIRD FLOOR
3/8" = 1'-0"



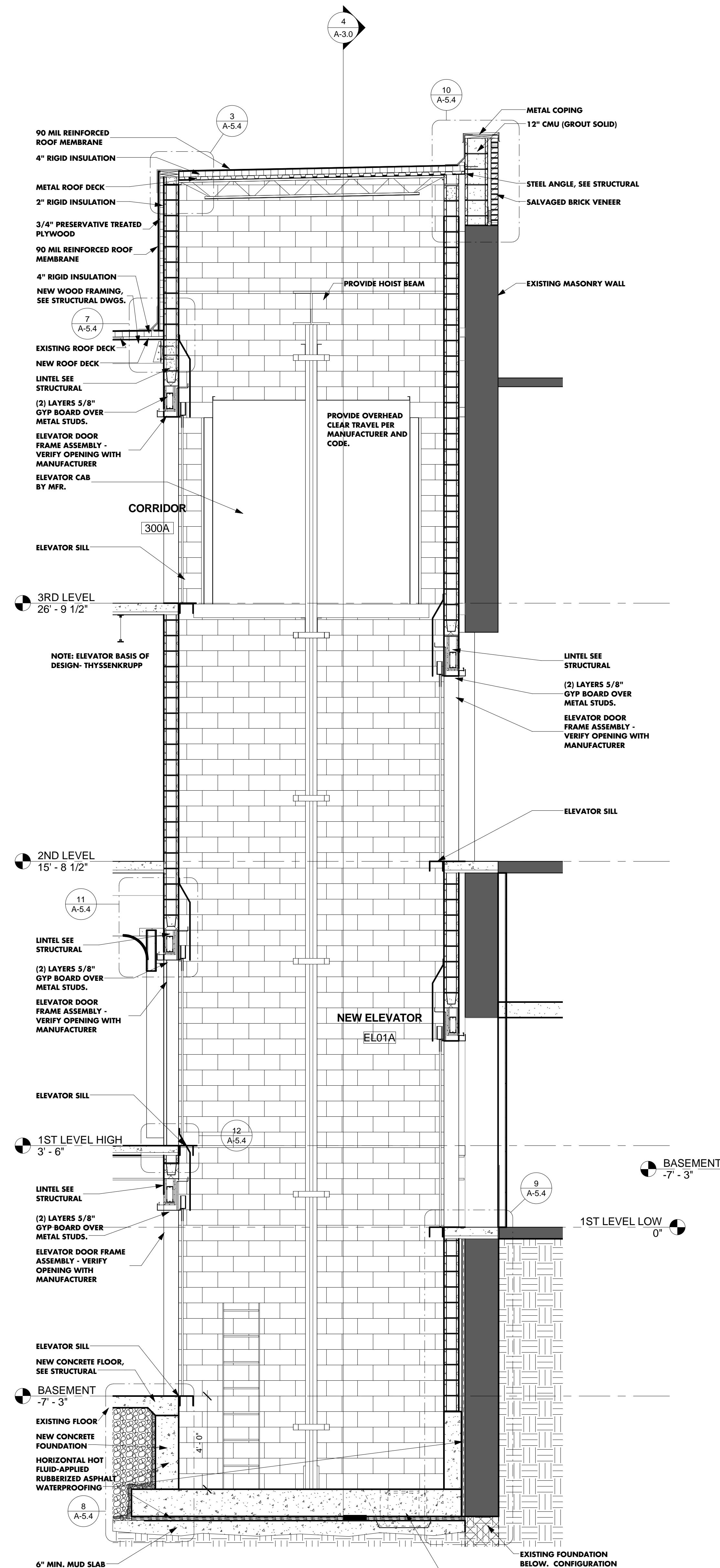
5 ENLARGED PLAN - ELEVATOR SECOND FLOOR
3/8" = 1'-0"



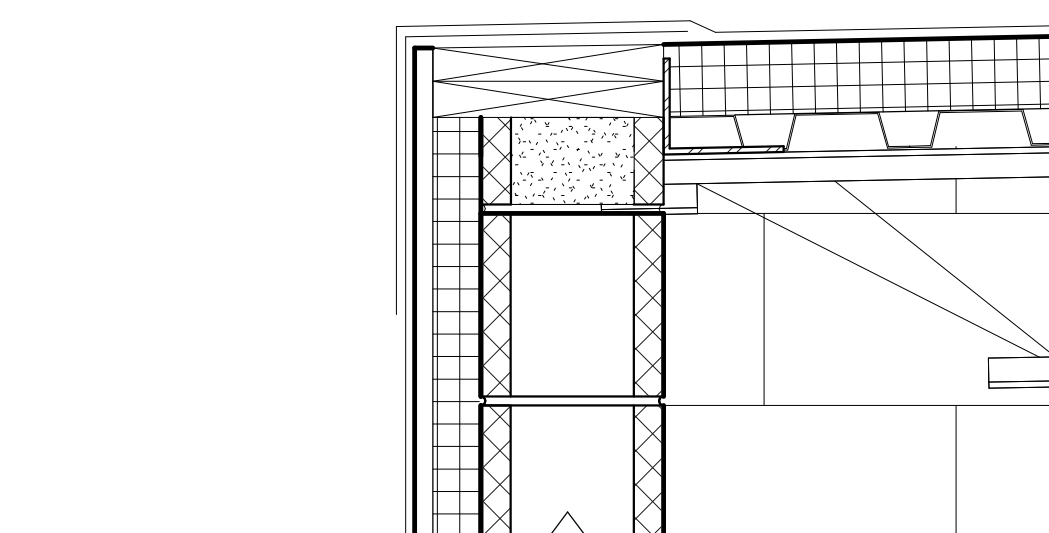
1 ENLARGED PLAN - ELEVATOR FIRST FLOOR
3/8" = 1'-0"



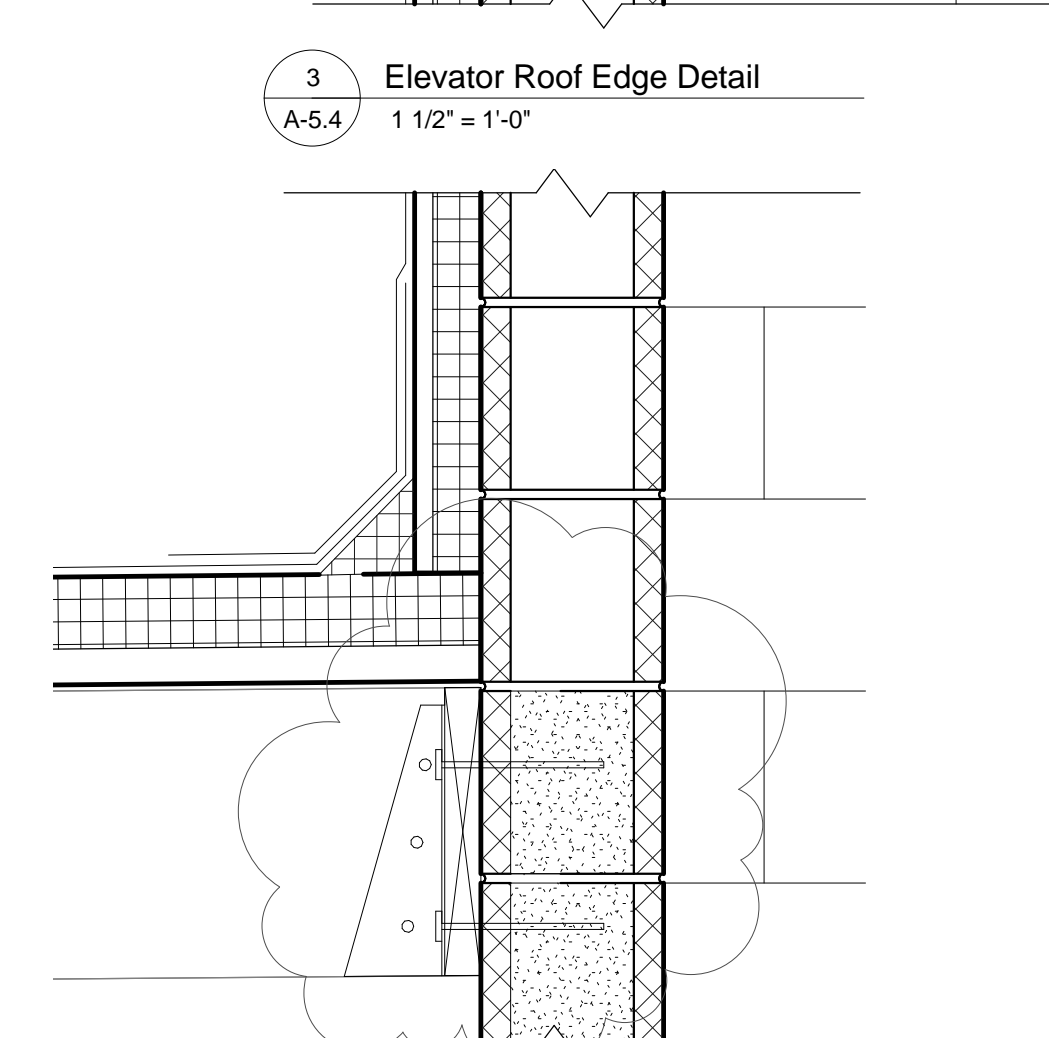
4 ENLARGED PLAN - ELEVATOR BASEMENT
3/8" = 1'-0"



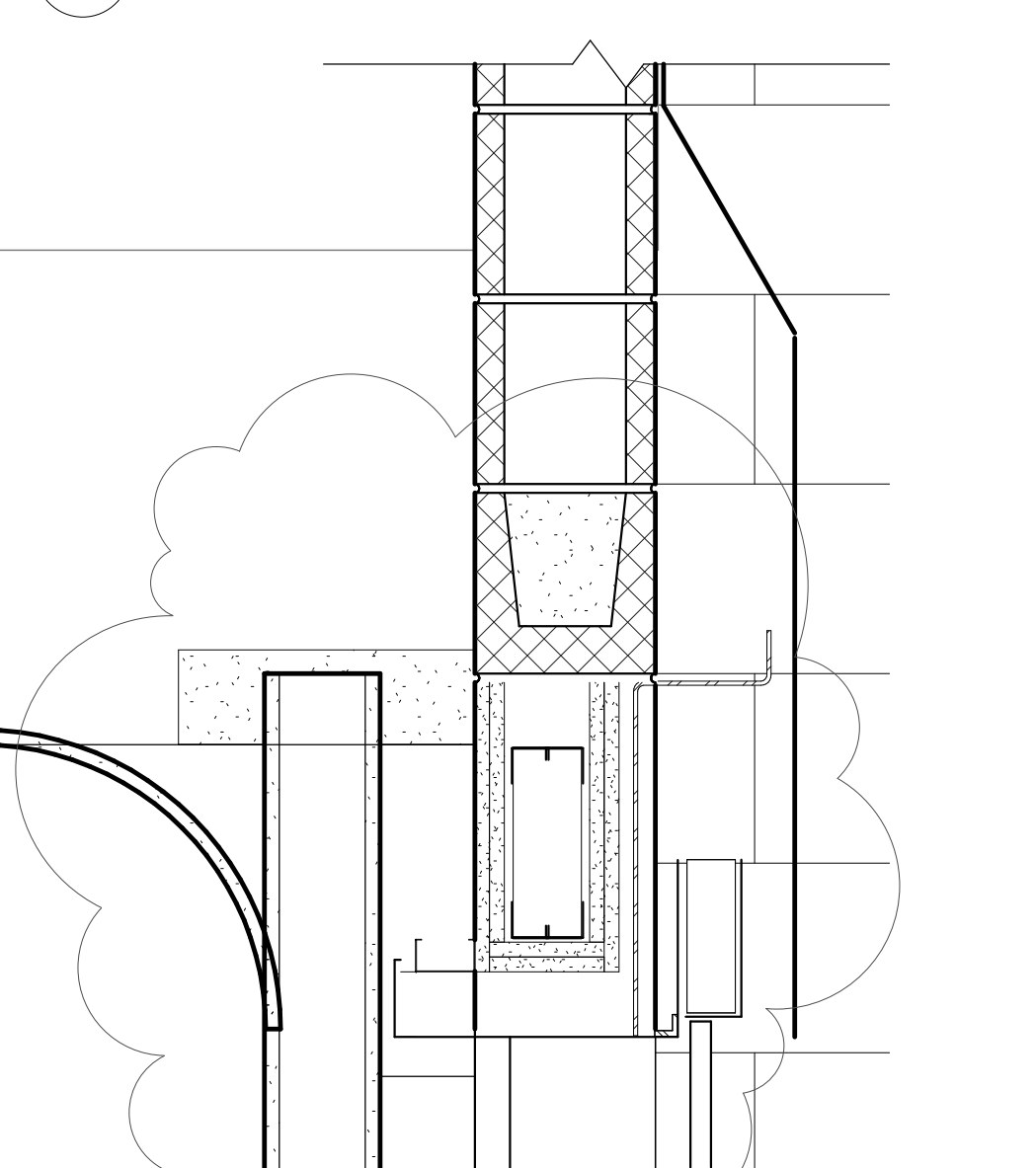
2 SECTION @ ELEVATOR
3/8" = 1'-0"



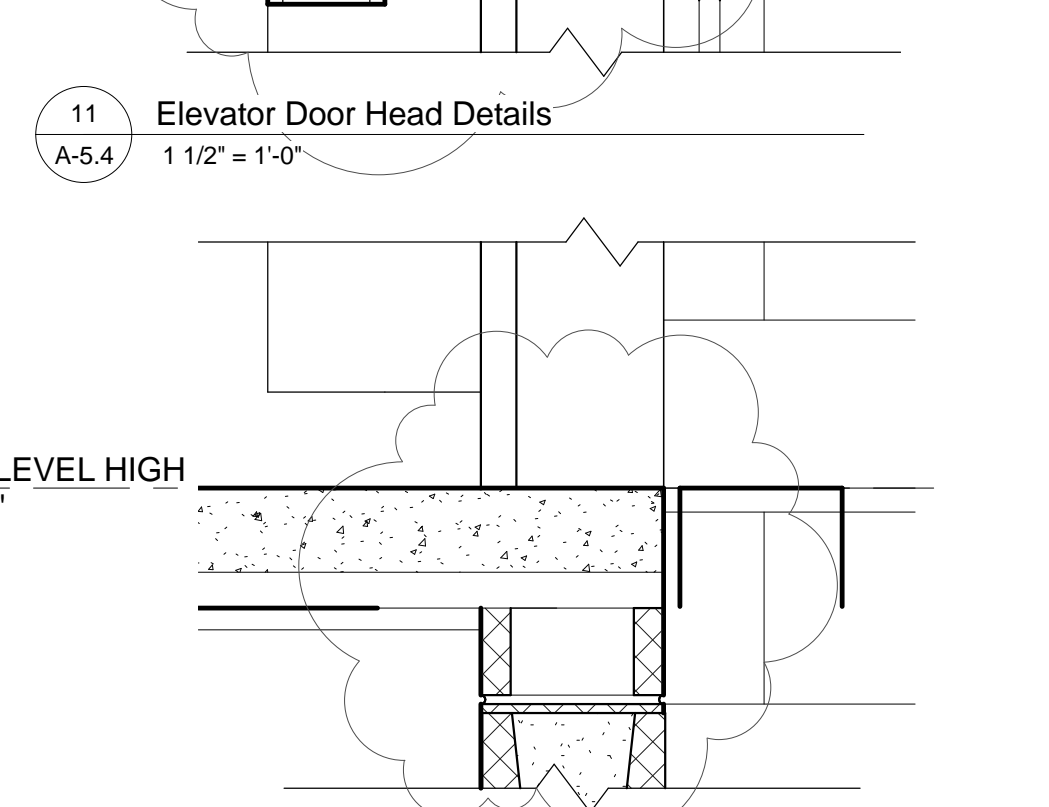
3 Elevator Roof Edge Detail
1 1/2" = 1'-0"



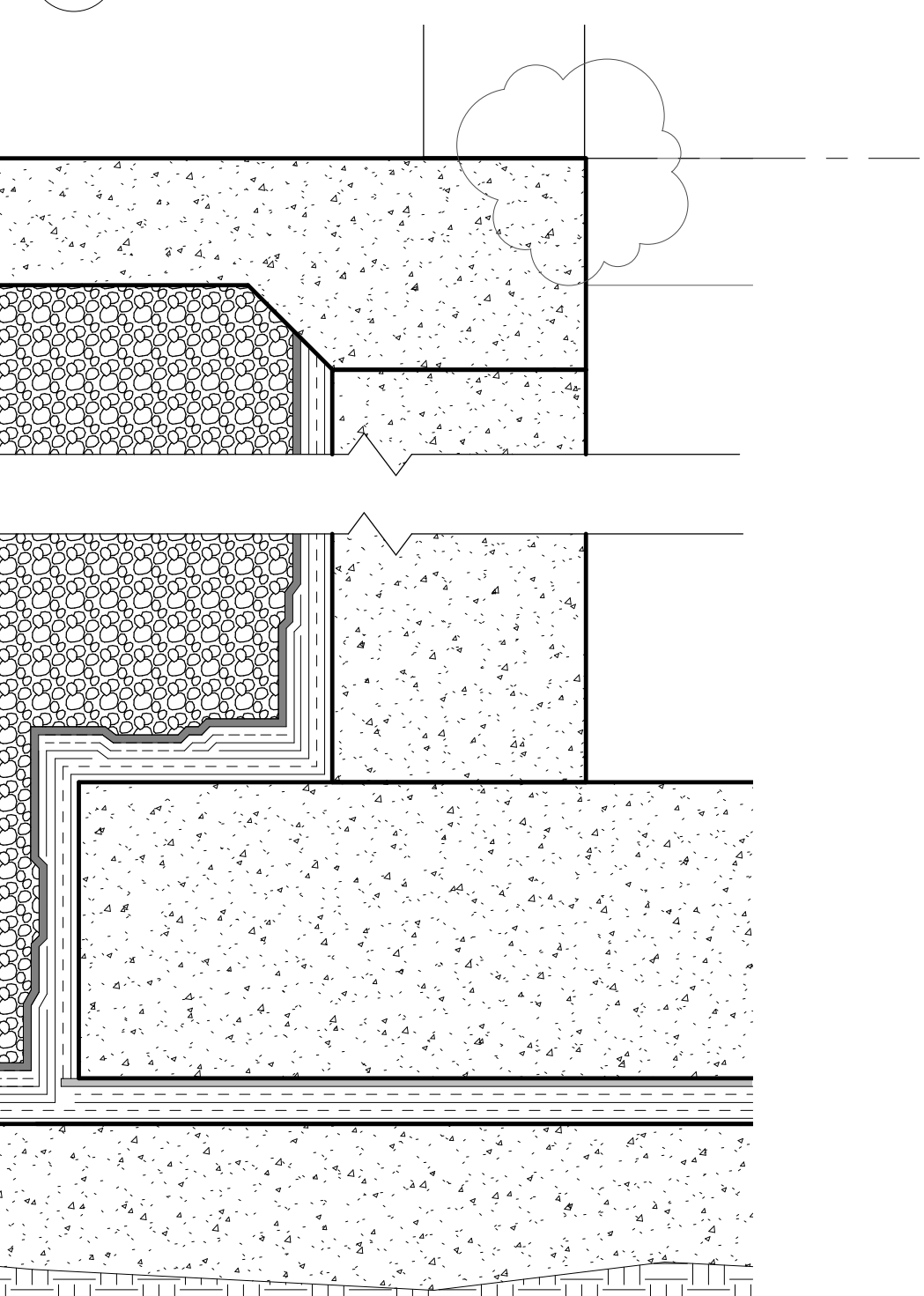
7 Elevator Roof Base Detail
1 1/2" = 1'-0"



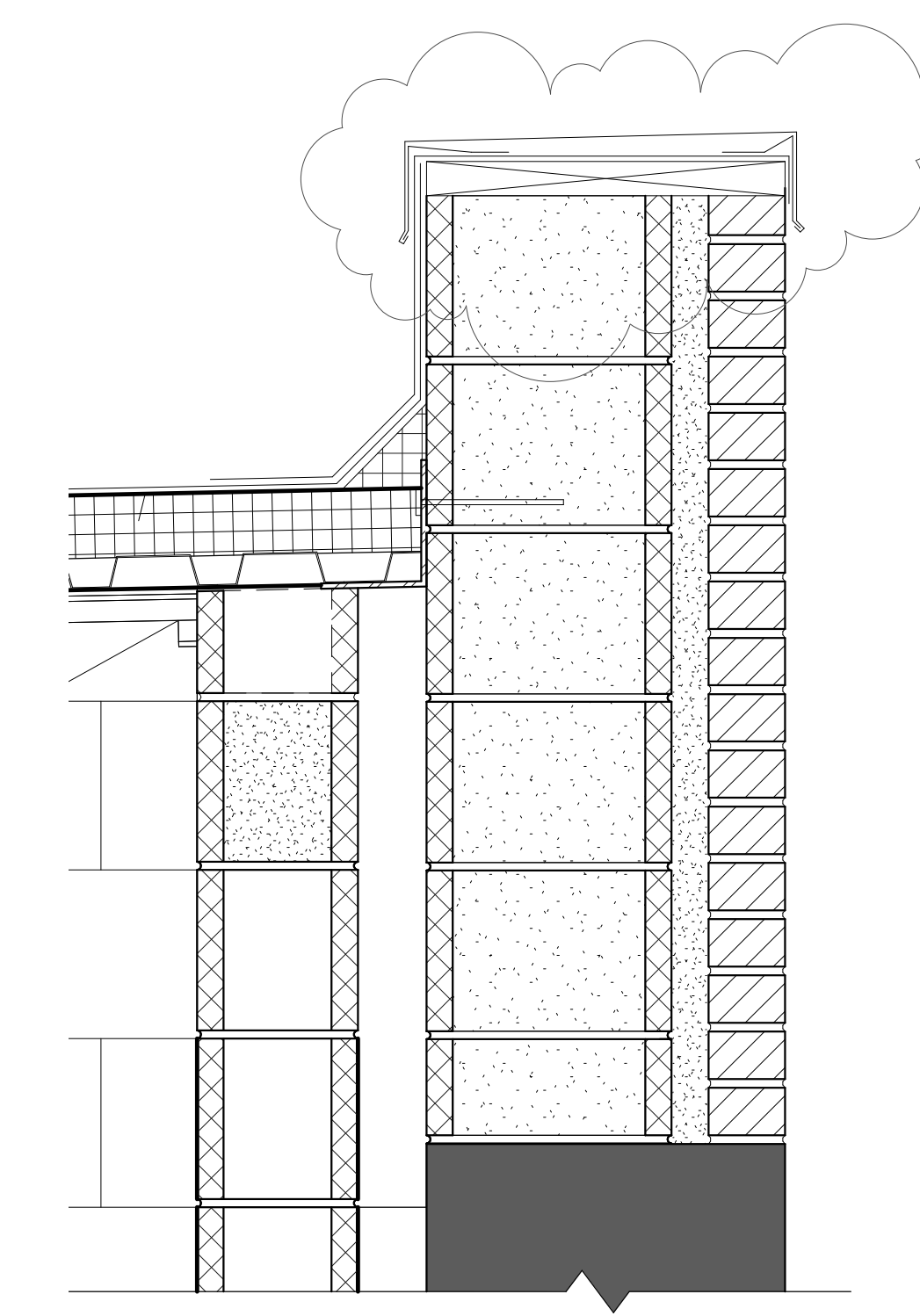
11 Elevator Door Head Details
1 1/2" = 1'-0"



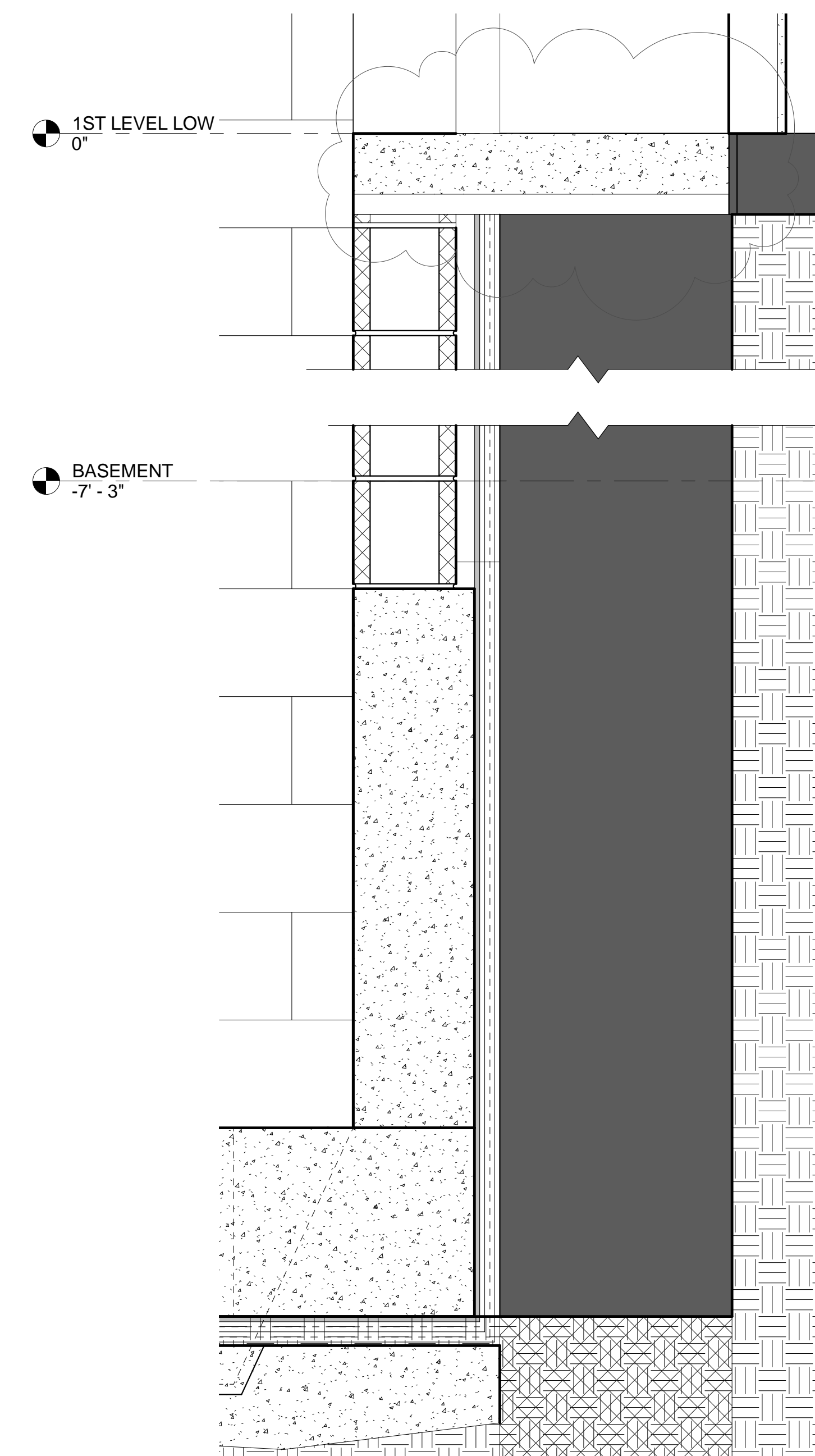
12 Elevator Door Sill Detail
1 1/2" = 1'-0"



8 Elevator Foundation Detail
1 1/2" = 1'-0"



10 Elevator Roof Parapet Detail
1 1/2" = 1'-0"

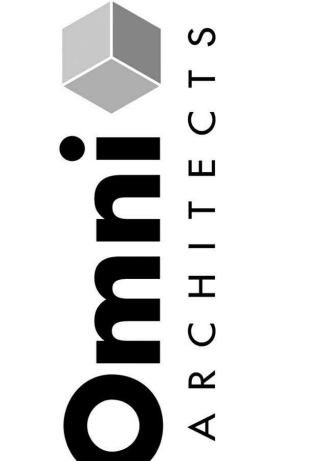


9 Elevator Foundation at Existing Wall
1 1/2" = 1'-0"

UNIVERSITY LOFTS - Renovate Academic Facility UK School of Art & Visual Studies

ENLARGED ELEVATOR PLAN AND SECTION

NOT FOR CONSTRUCTION Job Number: 1205 Date: 05/2013 Drawn By: Author Checked By: Checker Revision: 1



212 North Upper Street
Lexington, Kentucky 40507-1001
p.603.252.2222 f.603.252.2258
www.omniarchitects.com

This Drawing and the Design shown thereon are the property of Omni Architects. The reproduction, copying or other use of this drawing without the written consent of Omni Architects is prohibited.

PHASE 3 - CONSTRUCTION DOCUMENTS
50% REVIEW SUBMITTAL

A-5.4