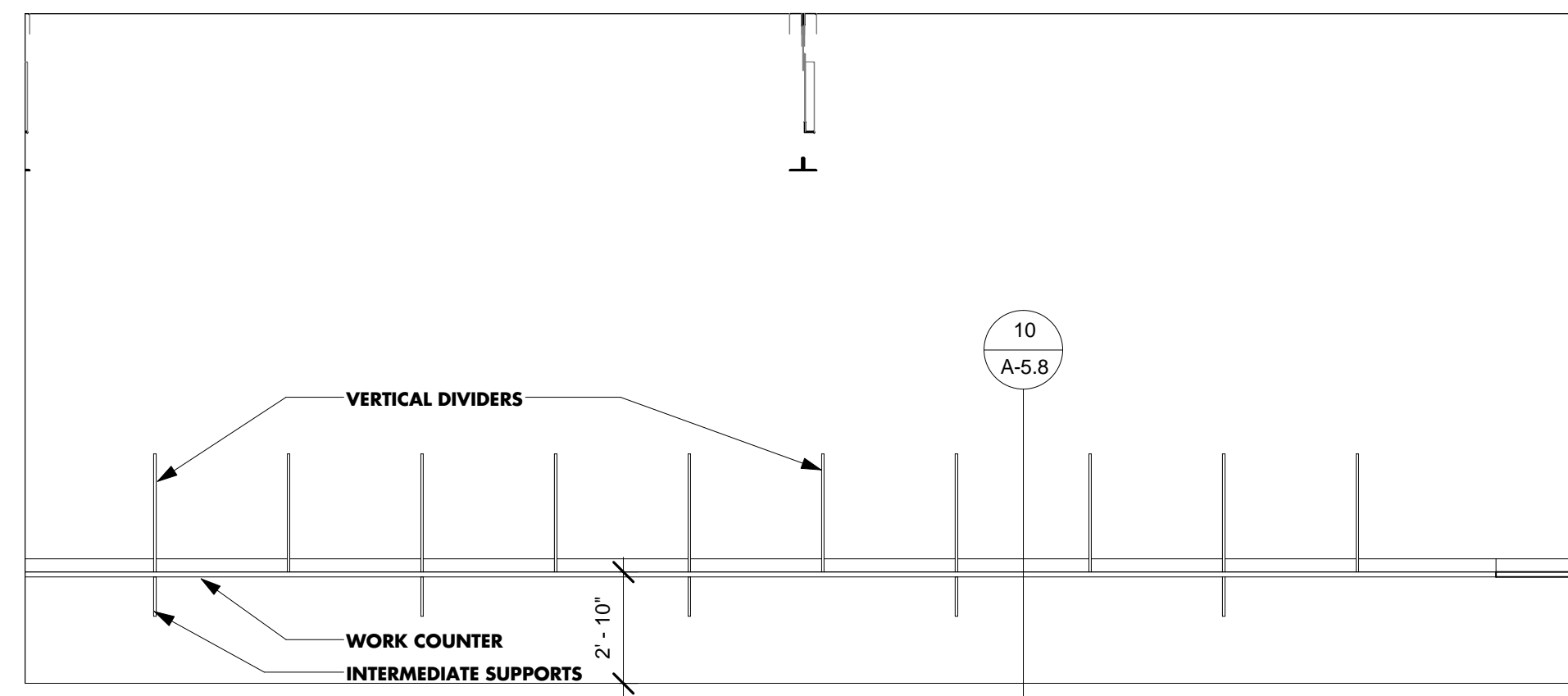
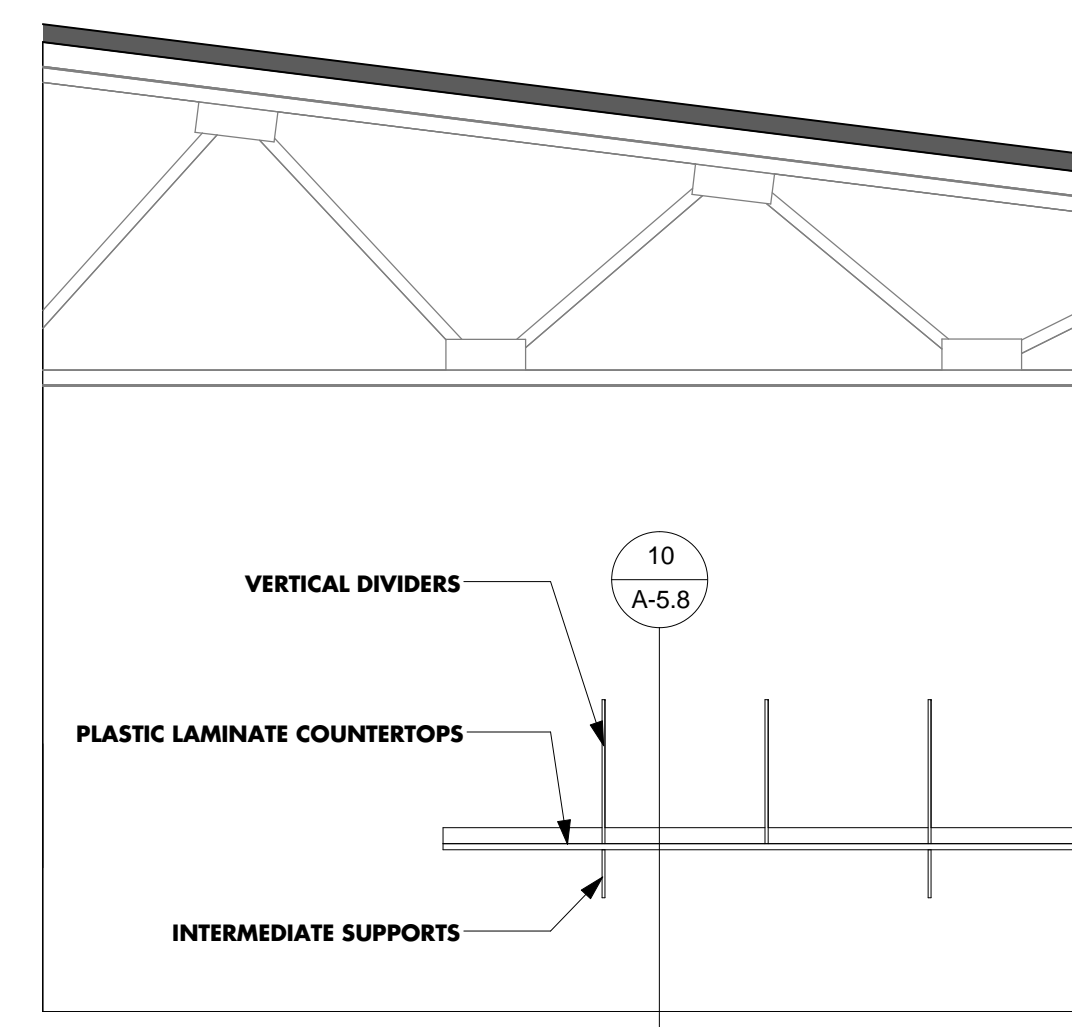


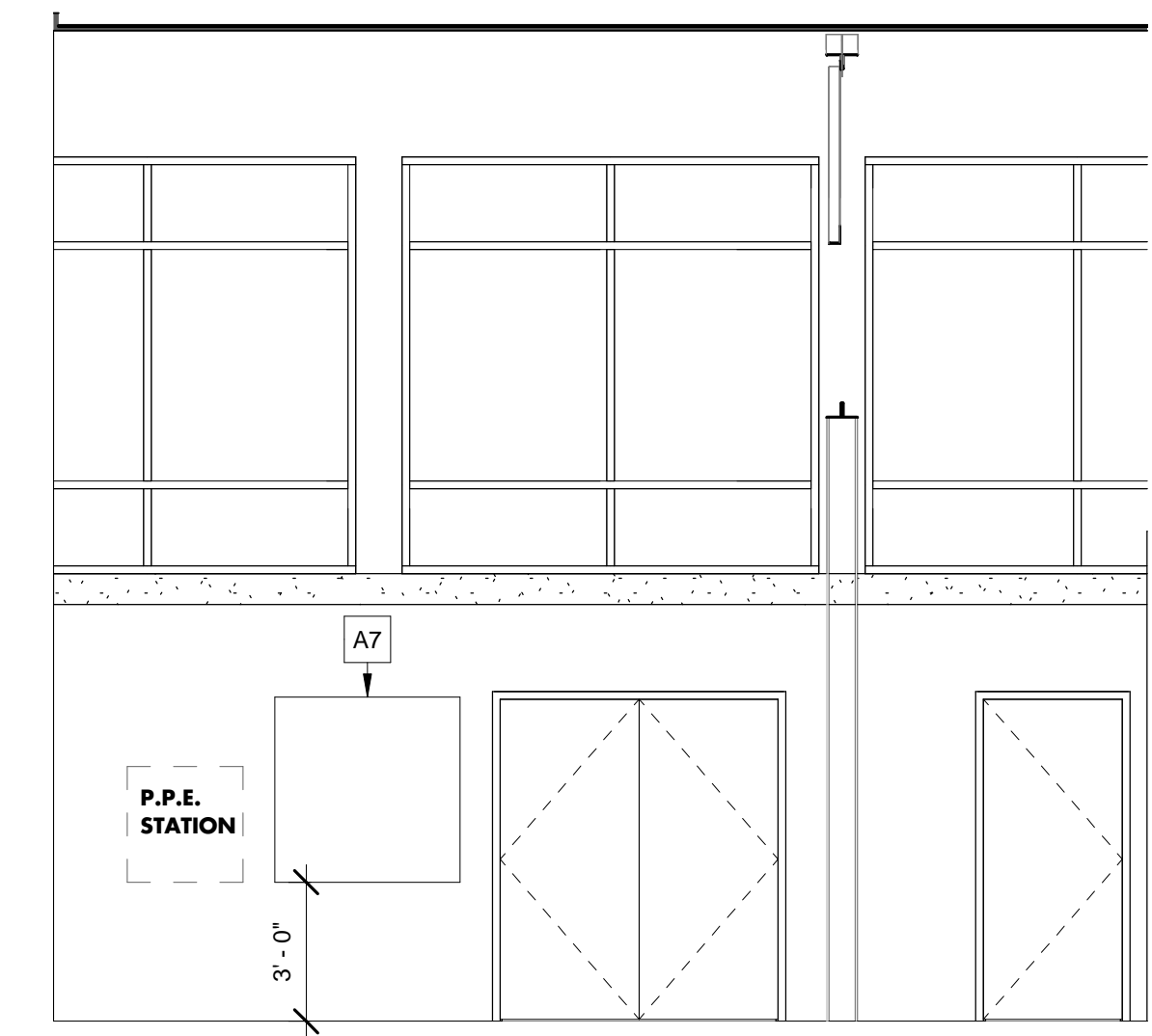
1 PHOTOGRAPHY DARKROOM - NORTH ELEVATION
A-5.6 1/4" = 1'-0"



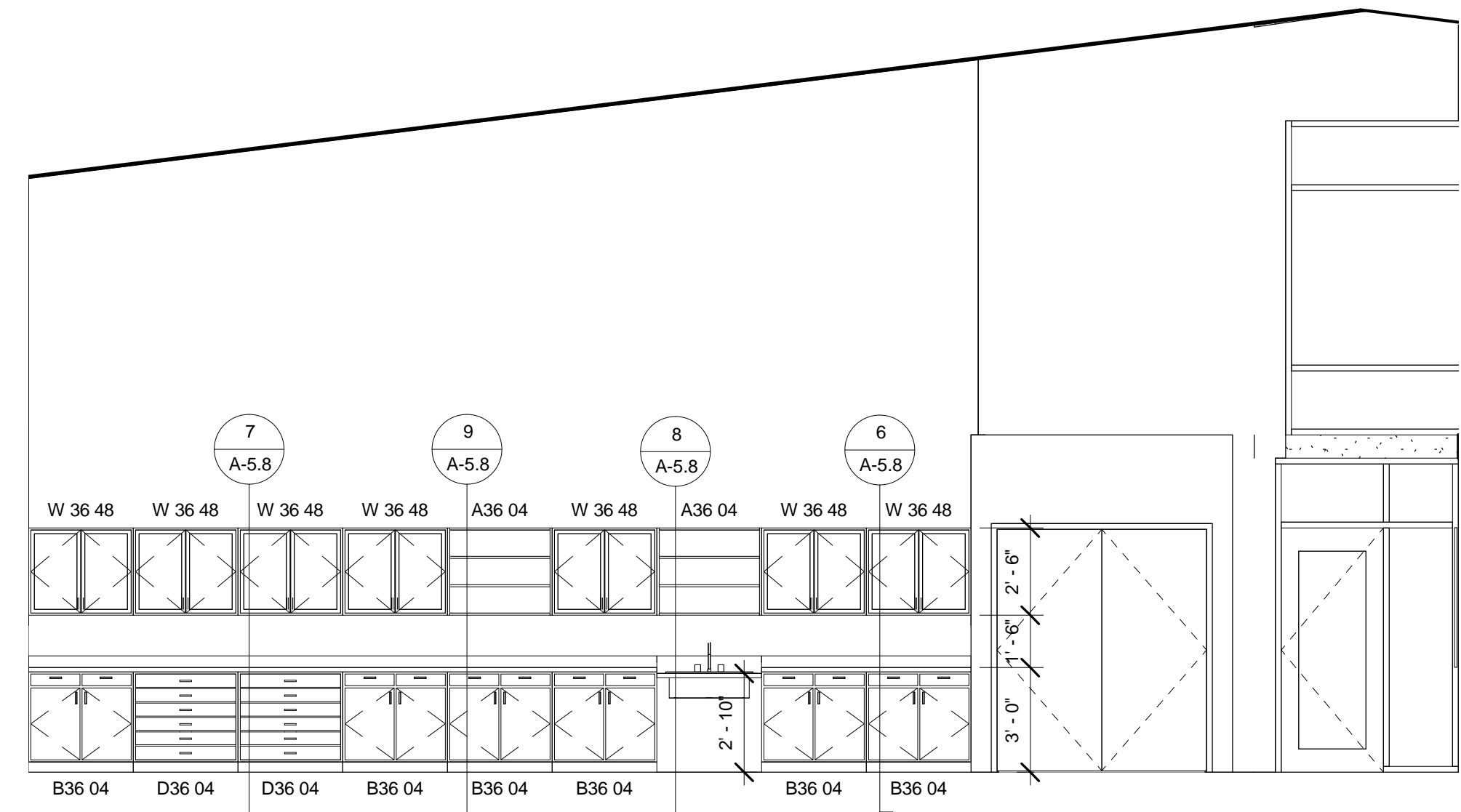
2 PHOTOGRAPHY DARKROOM - SOUTH ELEVATION
A-5.6 1/4" = 1'-0"



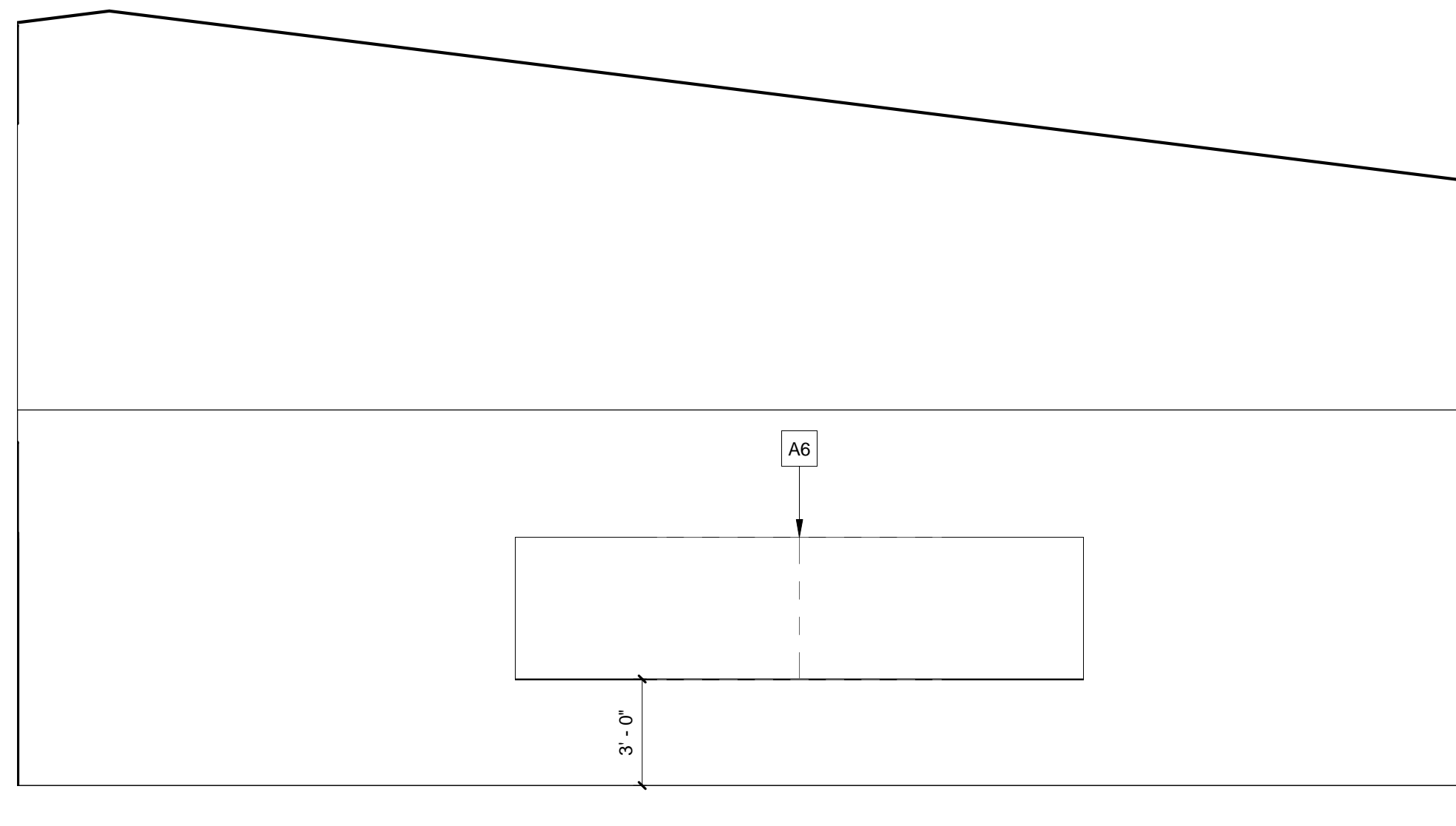
3 PHOTOGRAPHY SPECIAL PROCESS - SOUTH ELEVATION
A-5.6 1/4" = 1'-0"



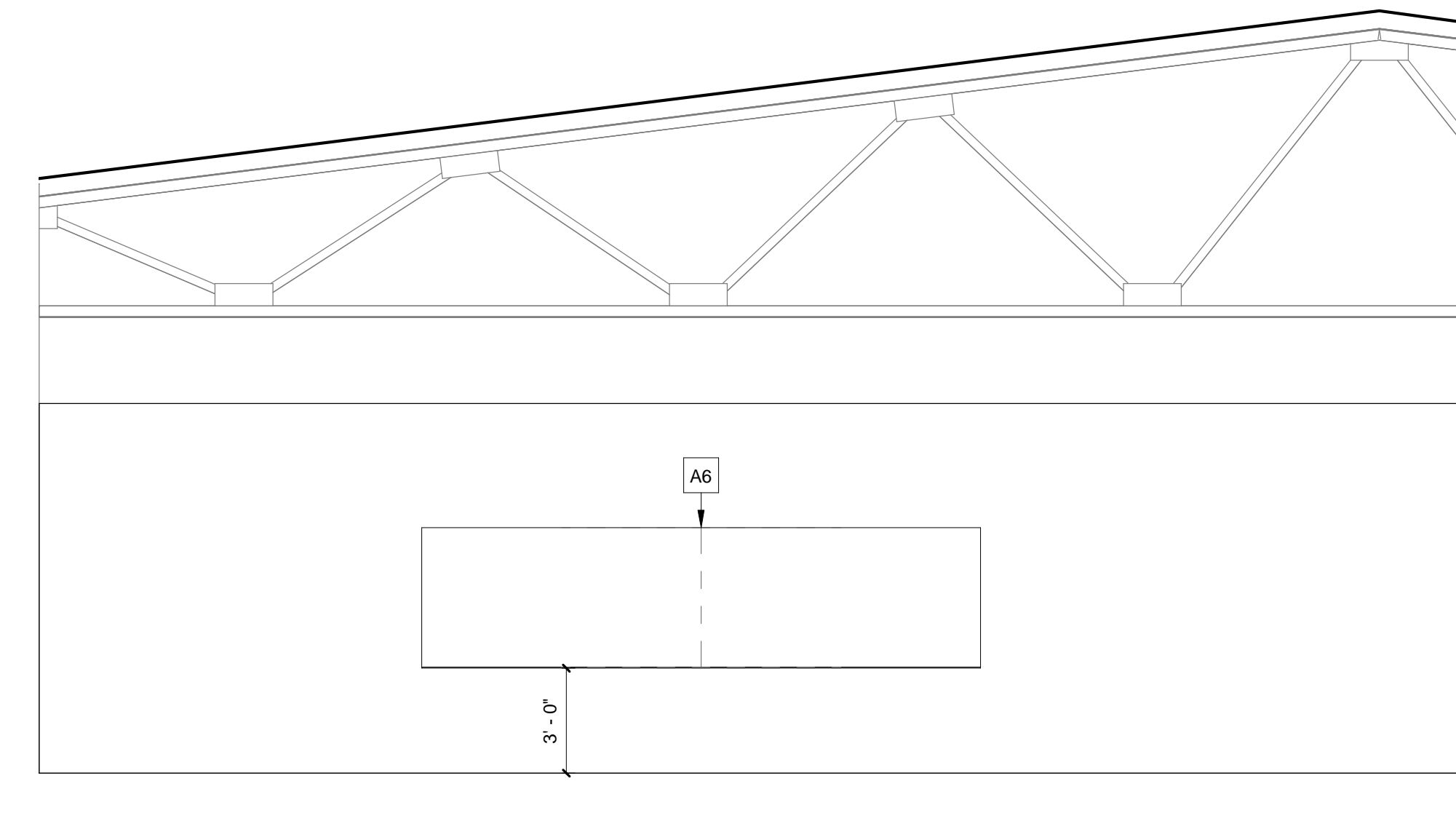
4 ART EDUCATION LAB 1 - N. ELEV.
A-5.6 1/4" = 1'-0"



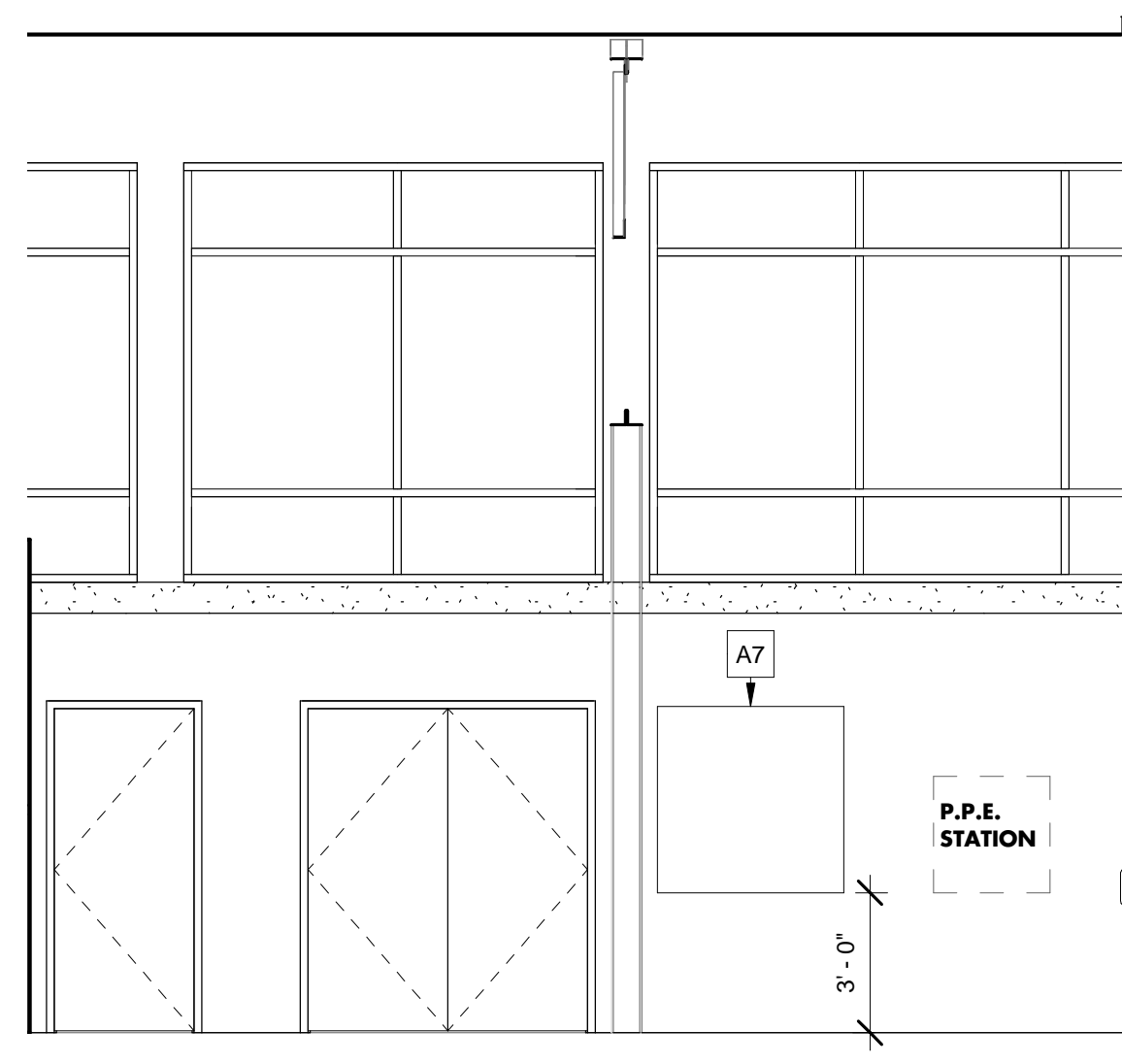
5 ART EDUCATION LAB 1 - W. ELEV.
A-5.6 1/4" = 1'-0"



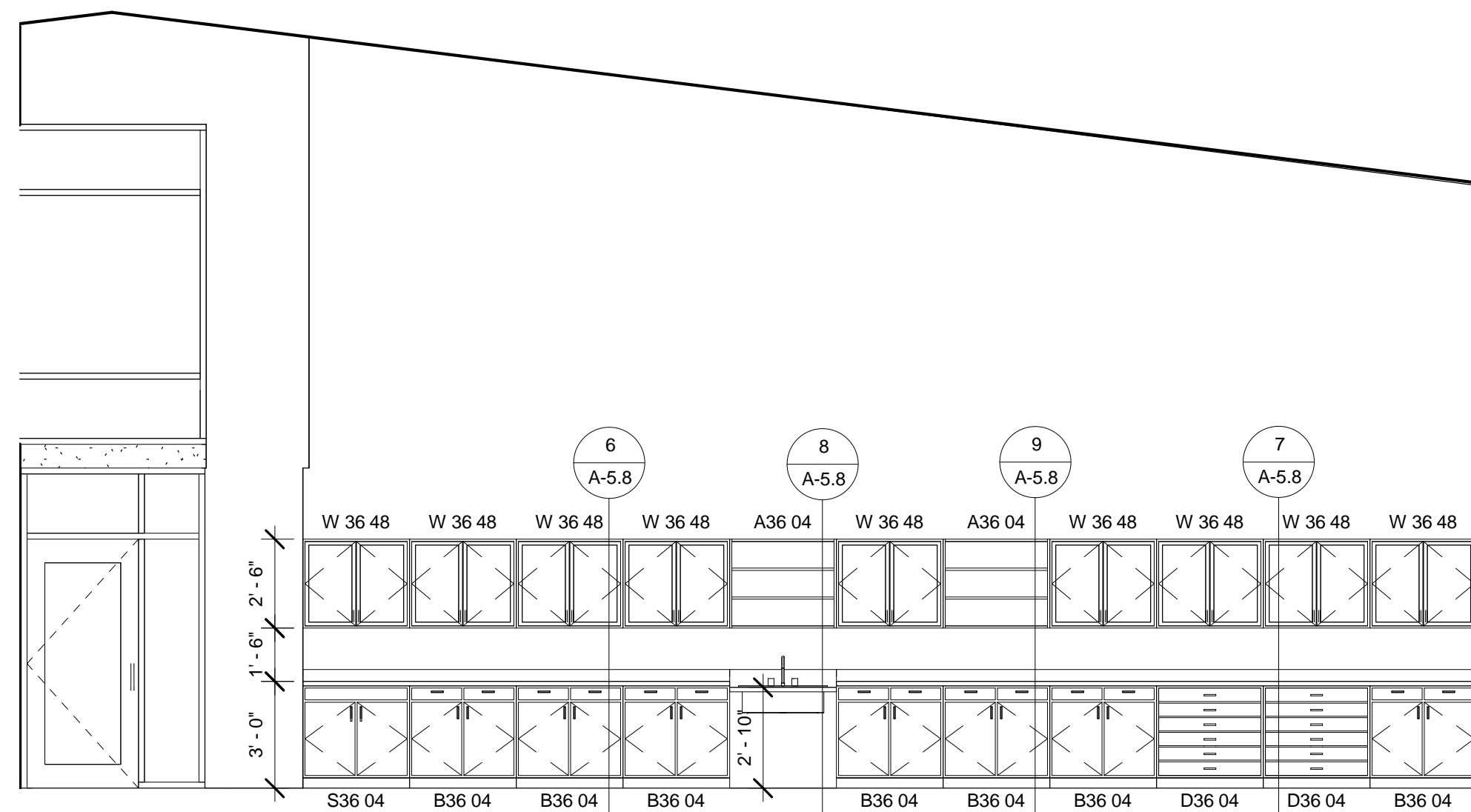
6 ART EDUCATION LAB 1 - E. ELEV.
A-5.6 1/4" = 1'-0"



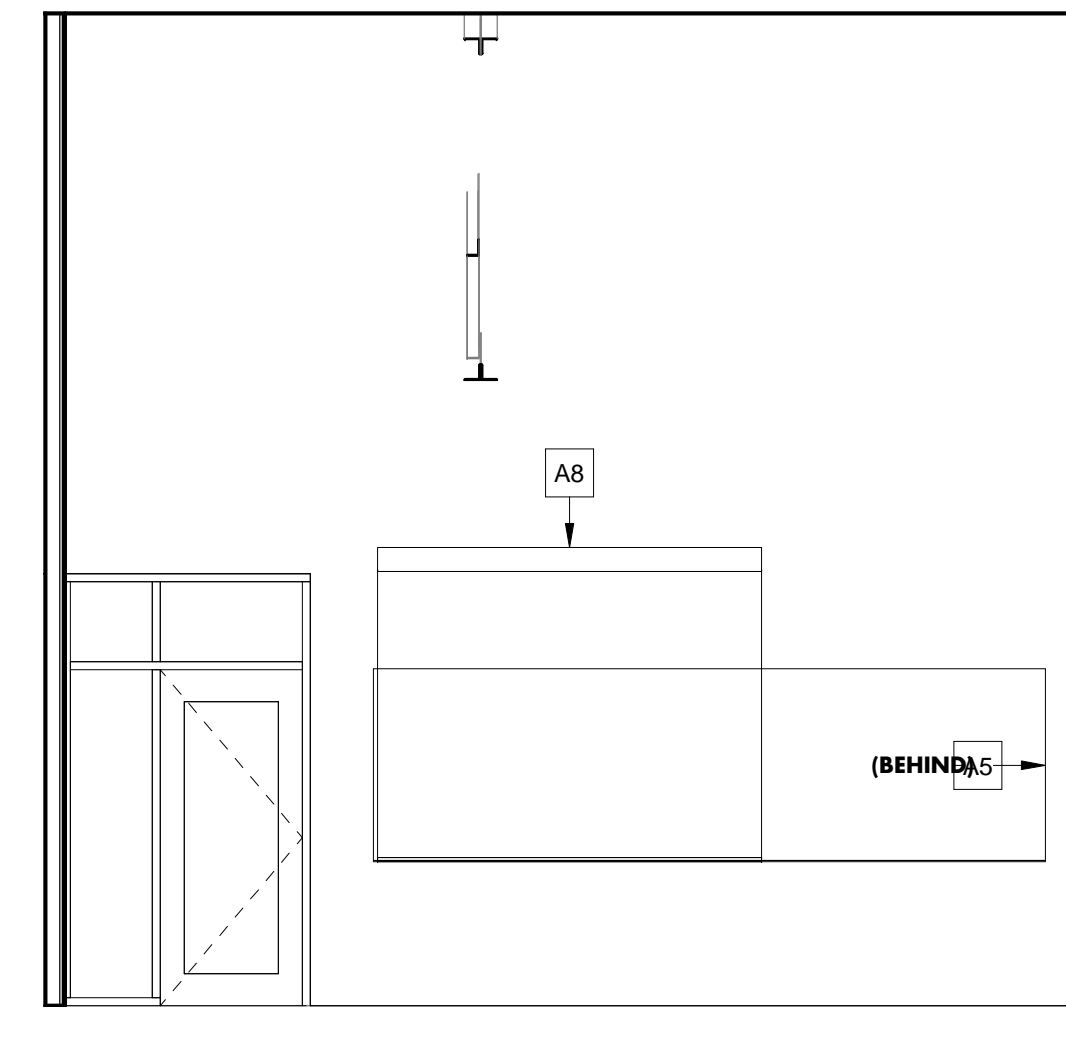
7 ART EDUCATION LAB 2 - W. ELEV.
A-5.6 1/4" = 1'-0"



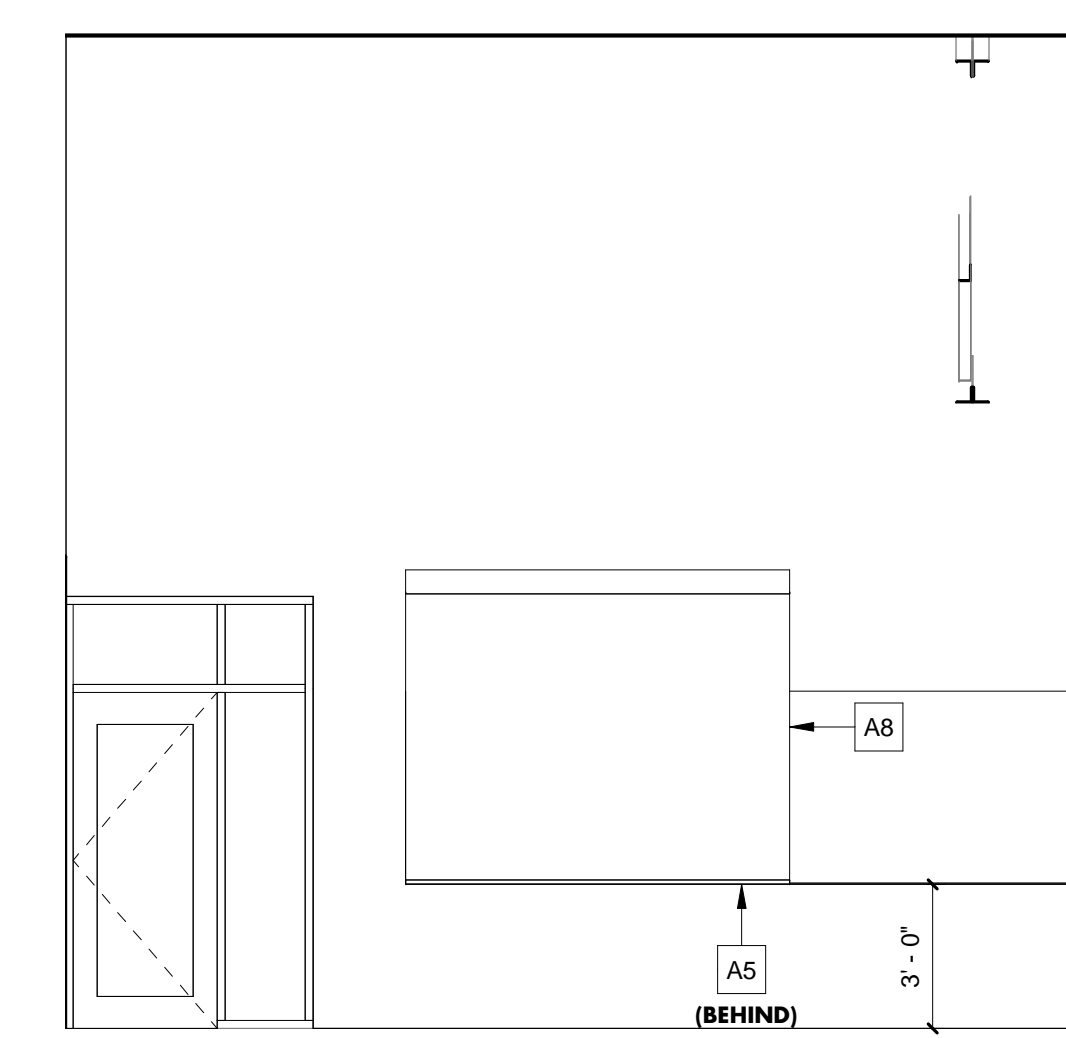
8 ART EDUCATION LAB 2 - N. ELEV.
A-5.6 1/4" = 1'-0"



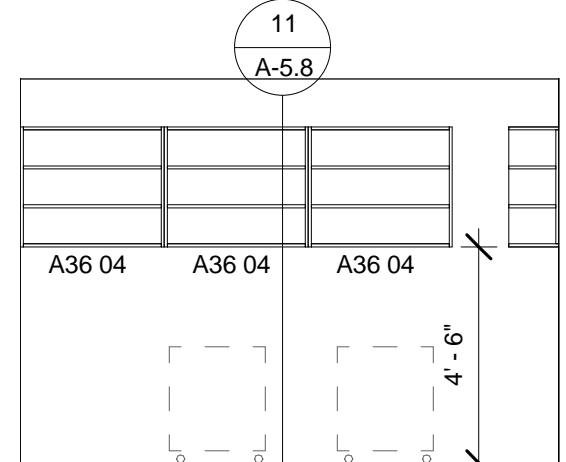
9 ART EDUCATION LAB 2 - E. ELEV.
A-5.6 1/4" = 1'-0"



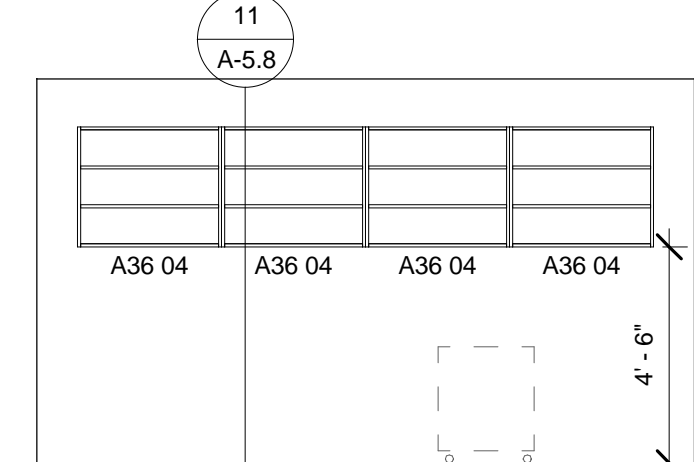
10 COMMONS/ADMIN. CLASSROOM 2 - N. ELEV.
A-5.6 1/4" = 1'-0"



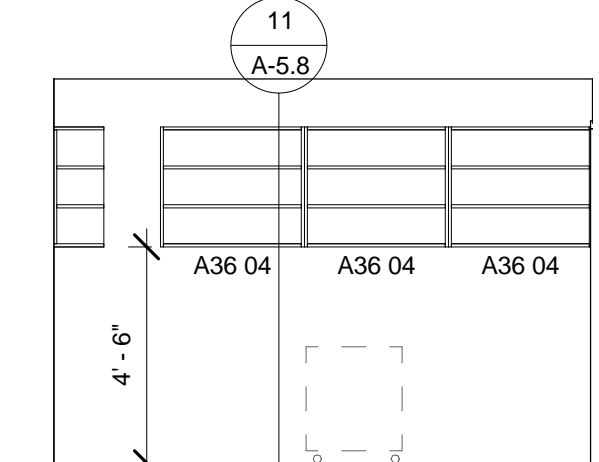
11 COMMONS/ADMIN. CLASSROOM 1 - N. ELEV.
A-5.6 1/4" = 1'-0"



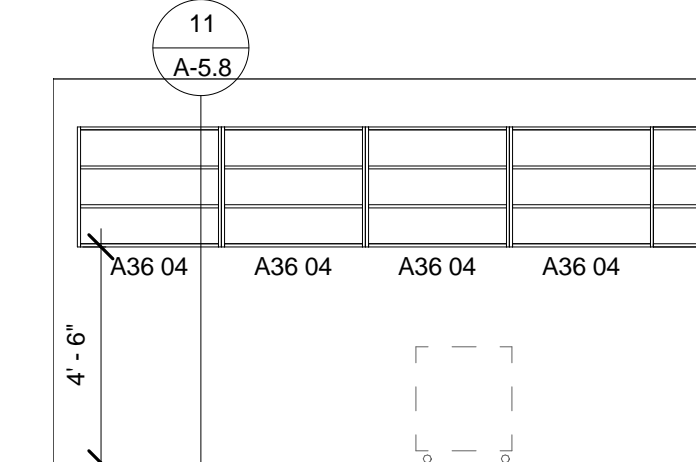
12 ART ED. STORAGE - W. ELEV.
A-5.6 1/4" = 1'-0"



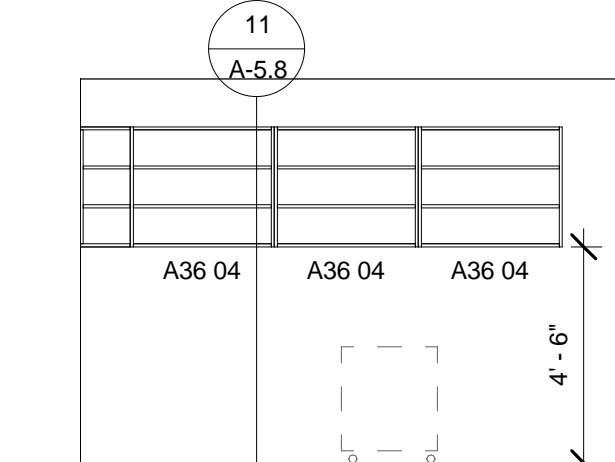
13 ART ED. STORAGE - N. ELEV.
A-5.6 1/4" = 1'-0"



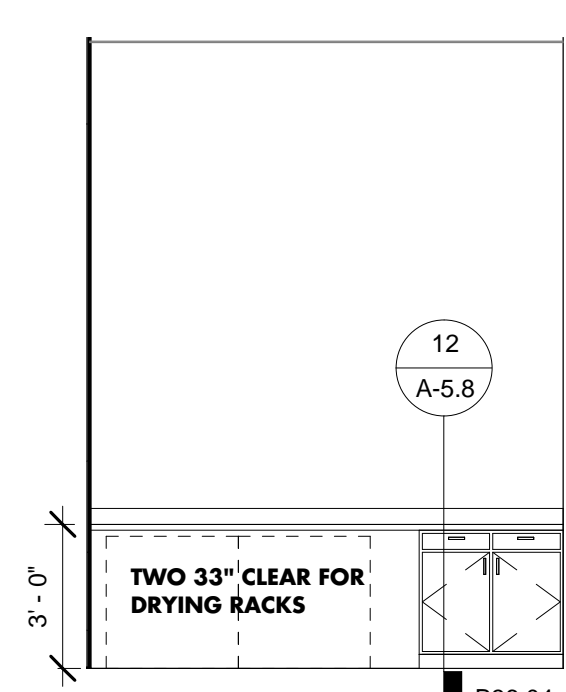
14 ART ED. STORAGE - E. ELEV.
A-5.6 1/4" = 1'-0"



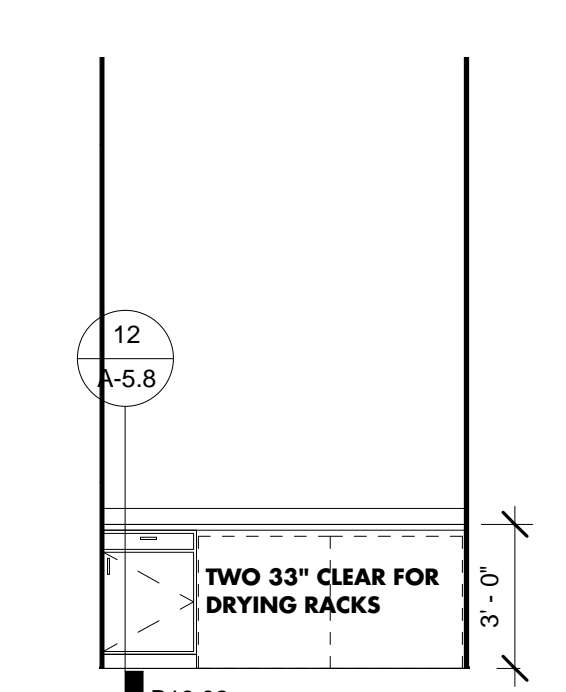
15 ART ED. STORAGE 2 - N. ELEV.
A-5.6 1/4" = 1'-0"



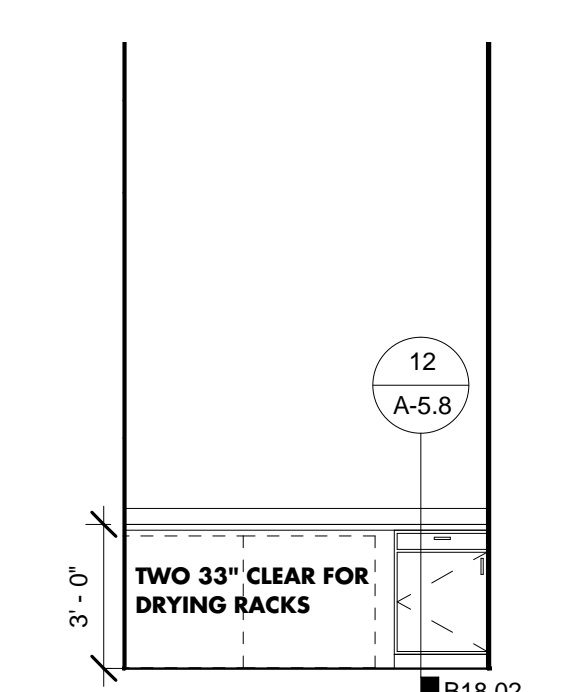
16 ART ED. STORAGE 2 - E. ELEV.
A-5.6 1/4" = 1'-0"



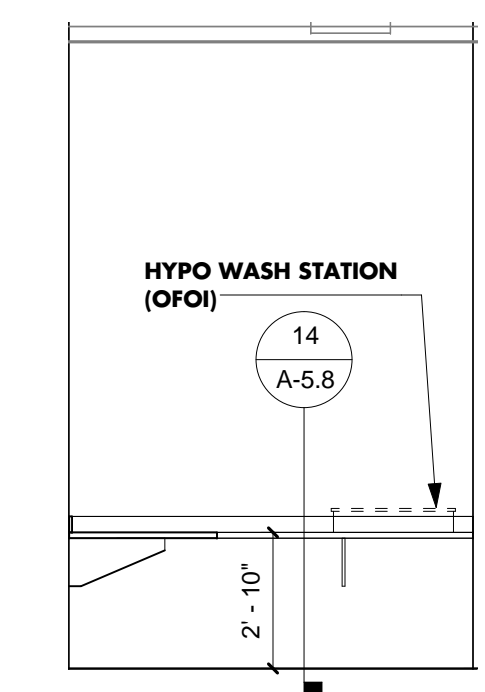
17 PHOTO IND. DARKROOM 1 - EAST ELEV.
A-5.6 1/4" = 1'-0"



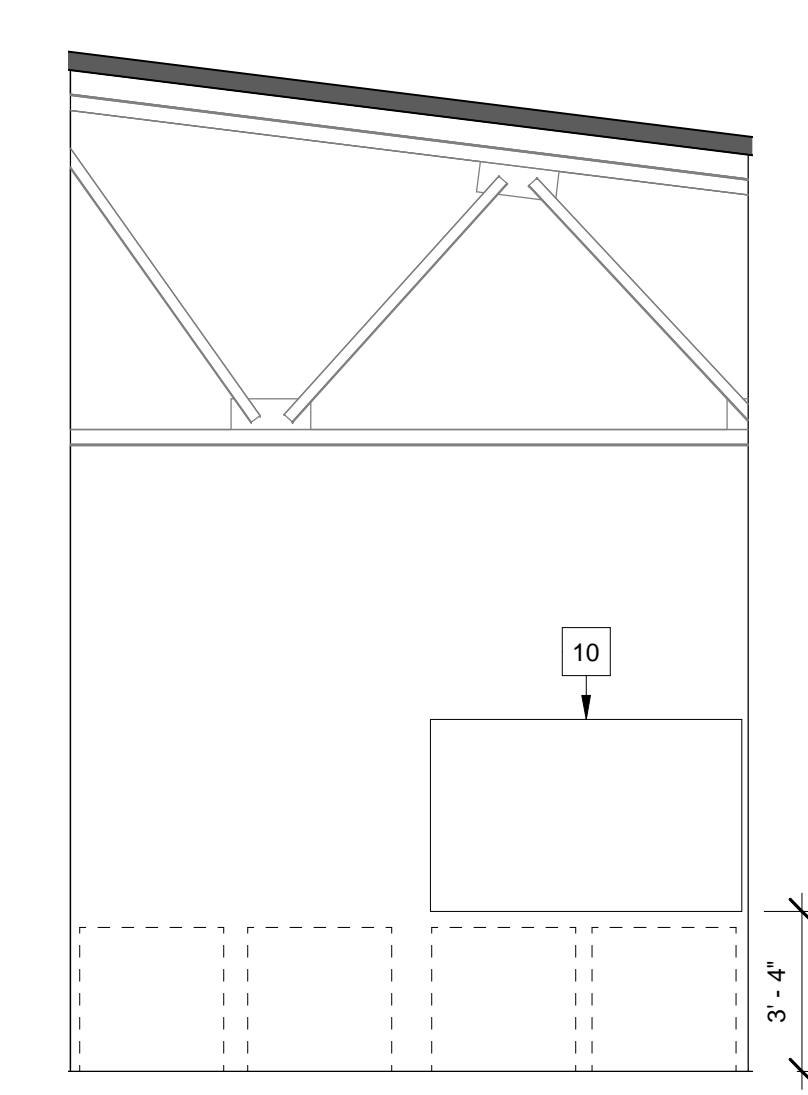
18 PHOTO IND. DARKROOM 2 - WEST ELEV.
A-5.6 1/4" = 1'-0"



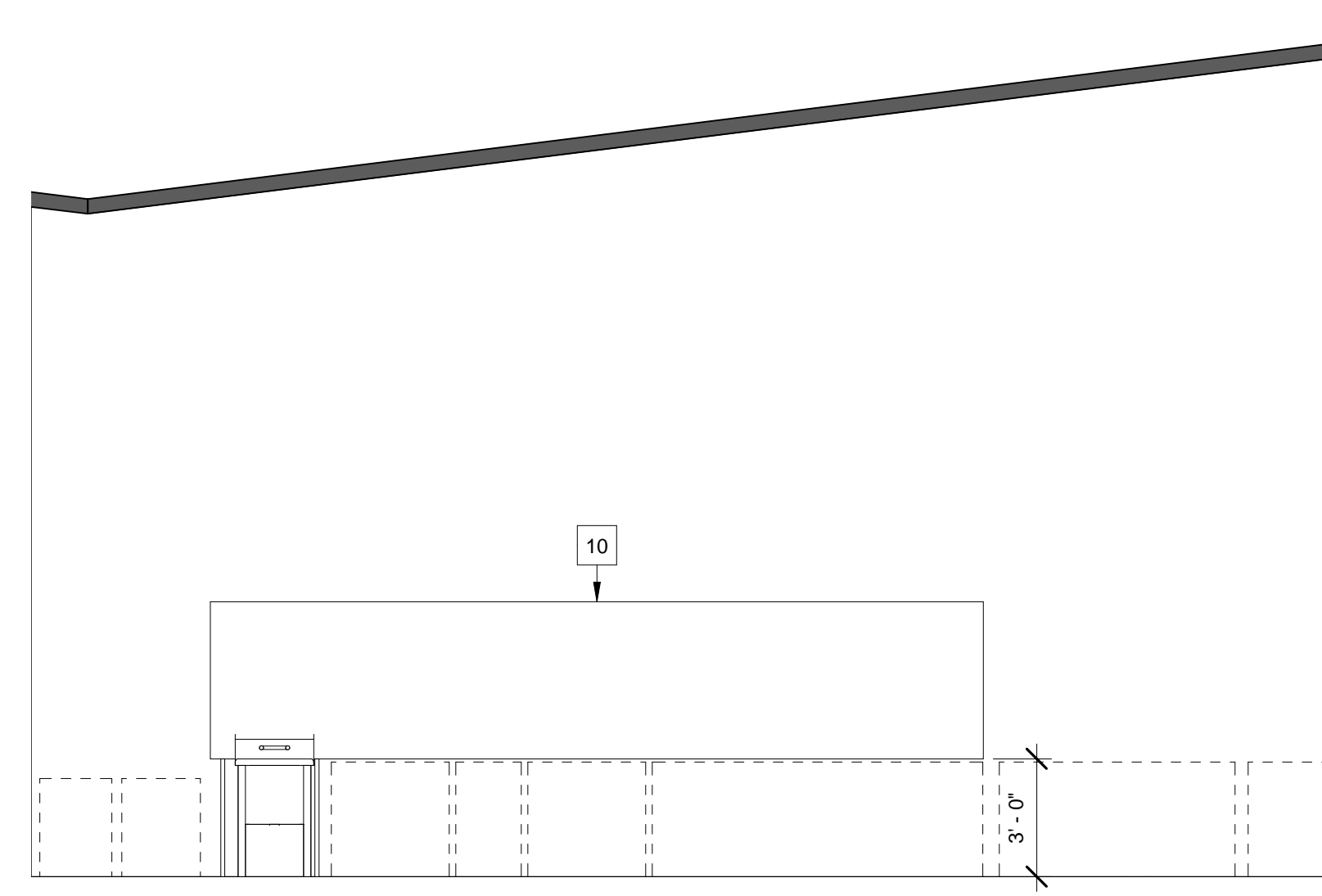
19 PHOTO IND. DARKROOM 3 - EAST ELEV.
A-5.6 1/4" = 1'-0"



20 DARKROOM - WEST
A-5.6 1/4" = 1'-0"



21 Developing Area - East
A-5.6 1/4" = 1'-0"



22 Developing Area - West
A-5.6 1/4" = 1'-0"

UNIVERSITY LOFTS - Renovate Academic Facility UK School of Art & Visual Studies

ENLARGED CASEWORK NOT FOR CONSTRUCTION Job Number: 1205 Date: 05/2013 Drawn By: Author Checked By: Checker Revision:

212 North Upper Street
Lexington, Kentucky 40507-1001
p.602.252.2252
www.omniarchitects.com



PHASE 3 - CONSTRUCTION DOCUMENTS
50% REVIEW SUBMITTAL

A-5.6

This Drawing and the Design shown thereon are the property of Omni Architects. The reproduction, copying or other use of this drawing without the written consent of Omni Architects is prohibited.