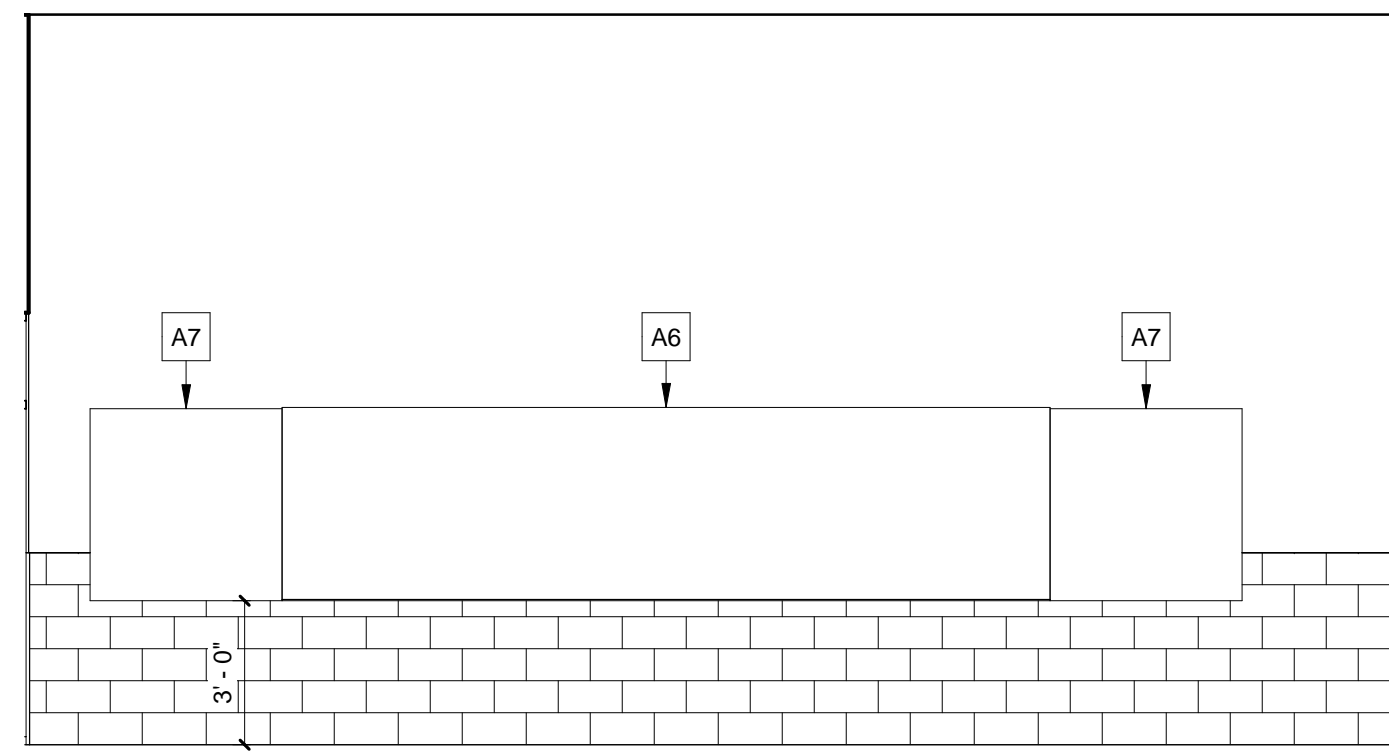
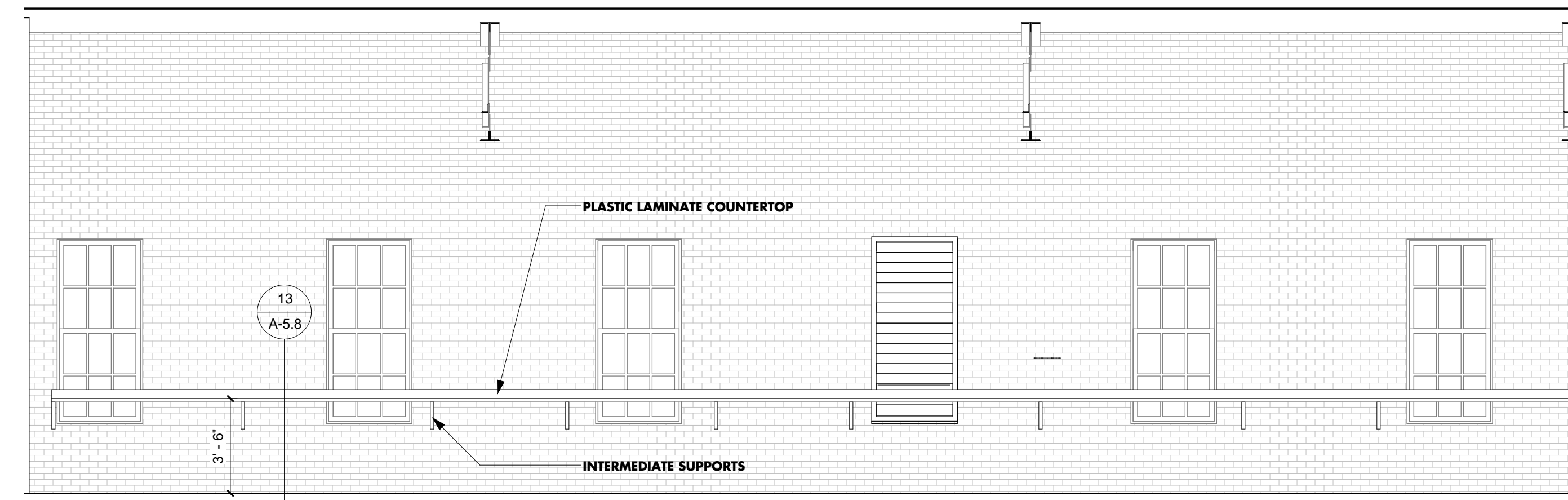


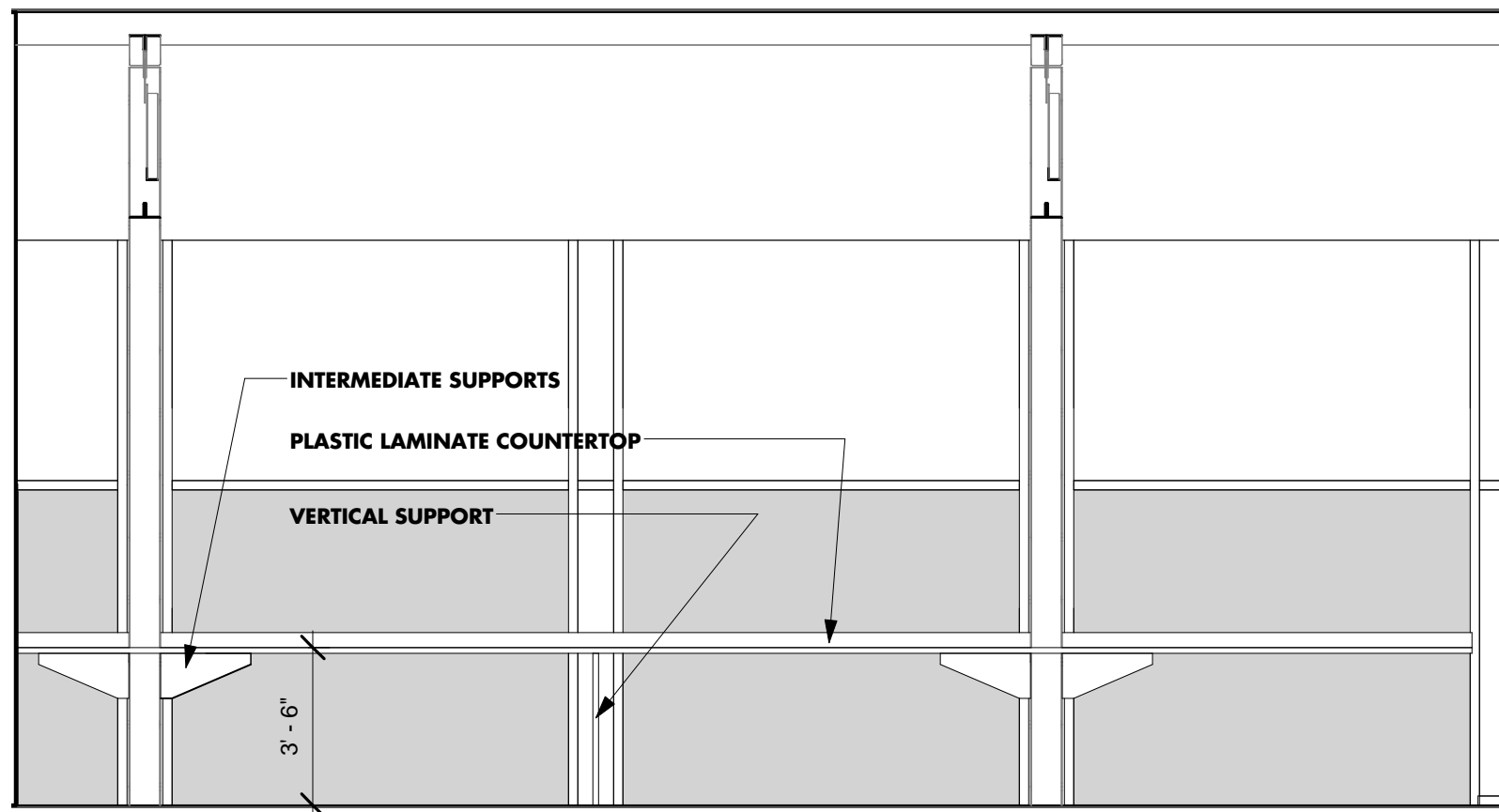
1 DIGITAL MEDIA LAB
A-5.7 1/4" = 1'-0"



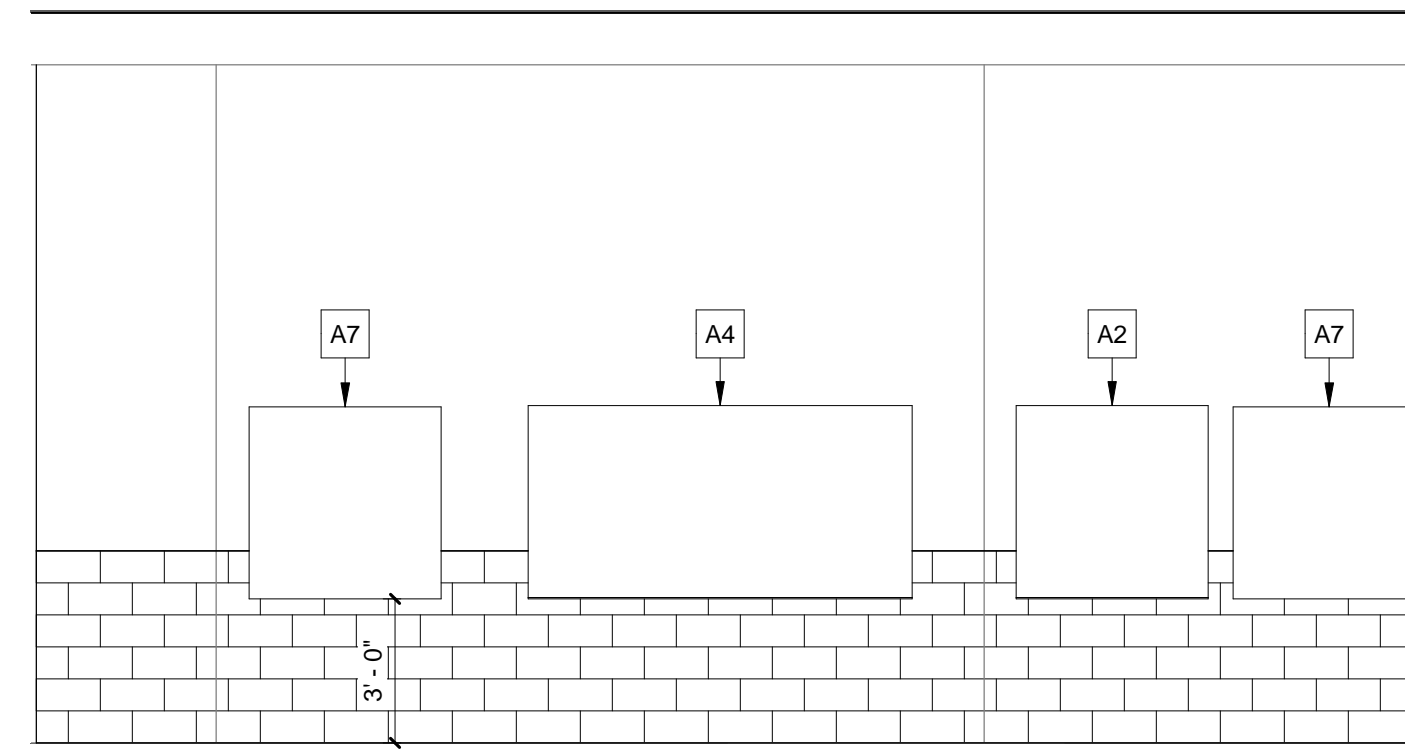
2 HAND-BUILDING CLASSROOM
A-5.7 1/4" = 1'-0"



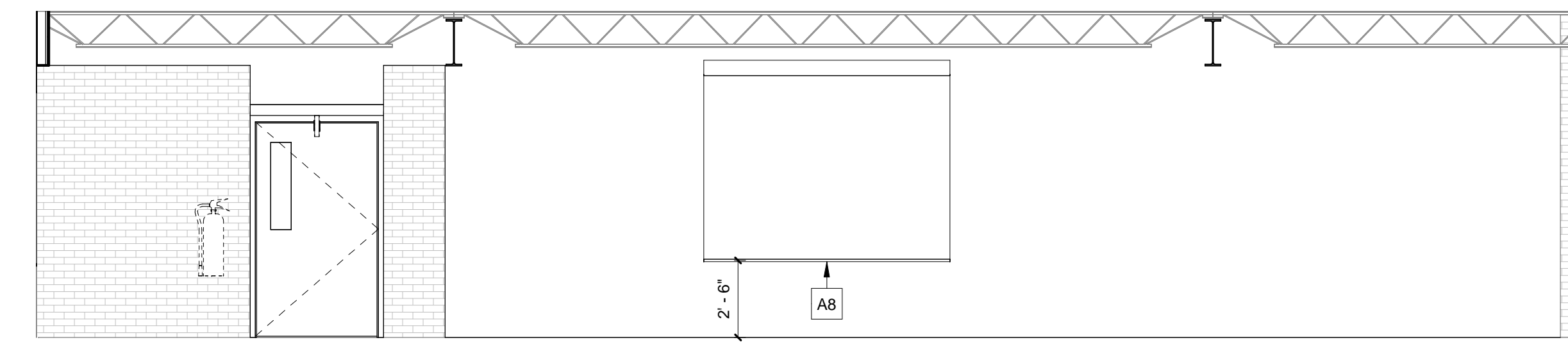
3 ETCHING/MONOPRINTS/WOODCUT - NORTH
A-5.7 1/4" = 1'-0"



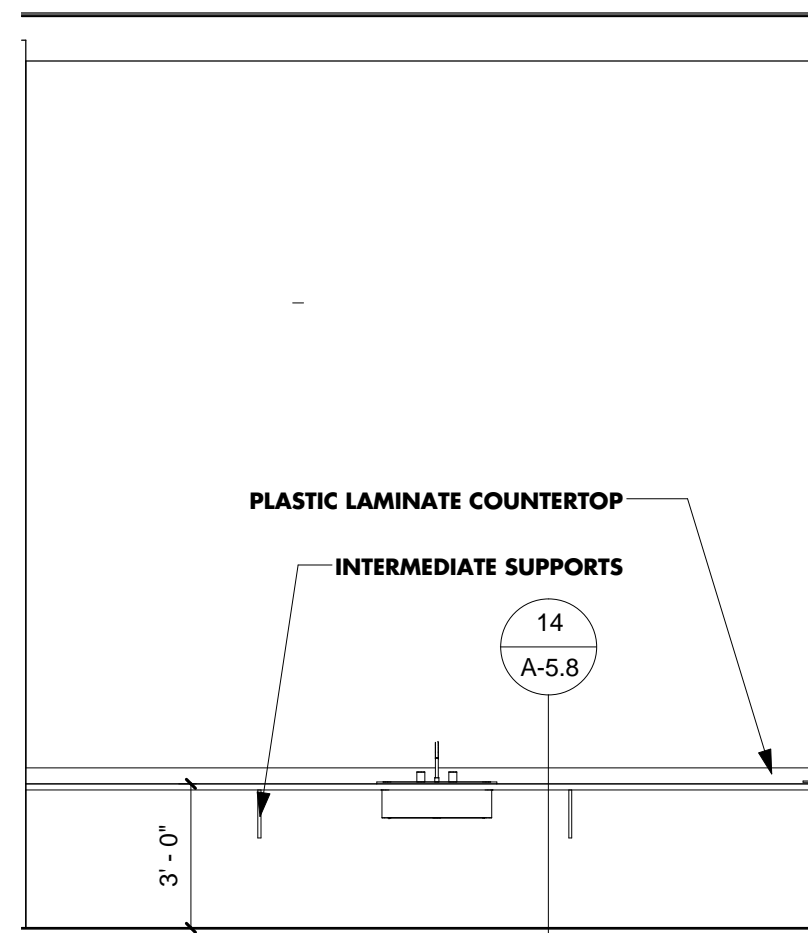
4 ETCHING/MONOPRINTS/WOODCUT - SOUTH
A-5.7 1/4" = 1'-0"



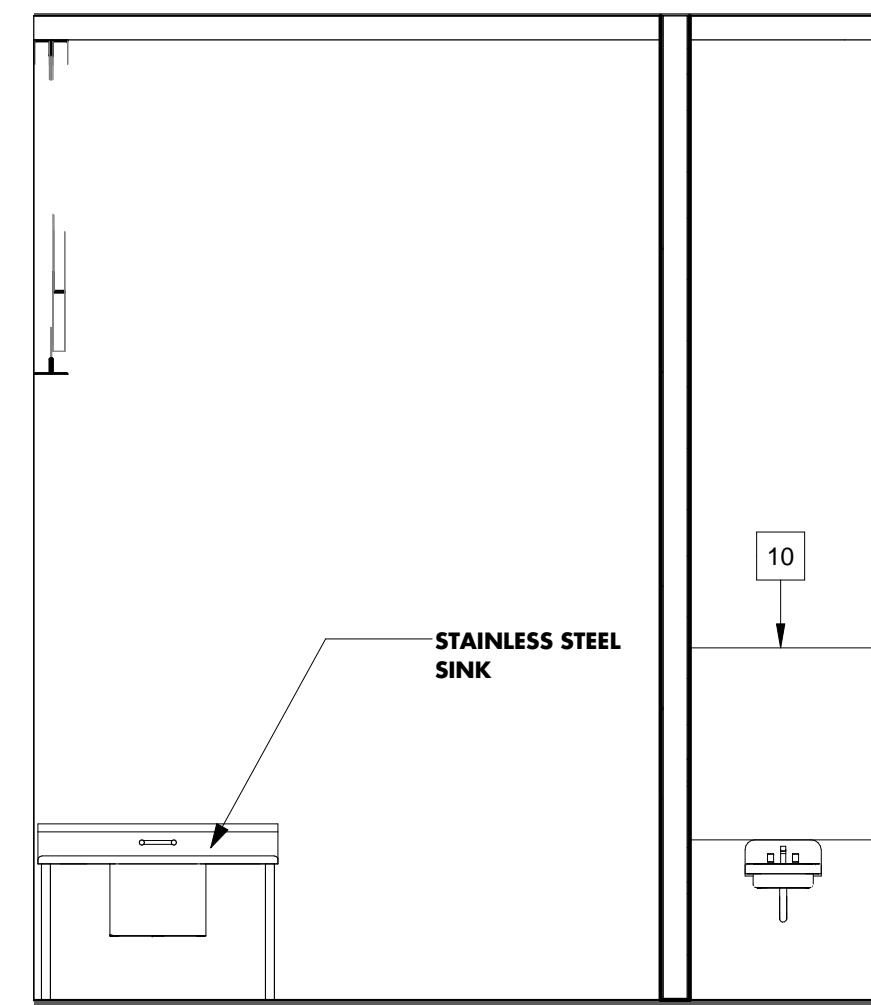
5 GENERAL CLASSROOM
A-5.7 1/4" = 1'-0"



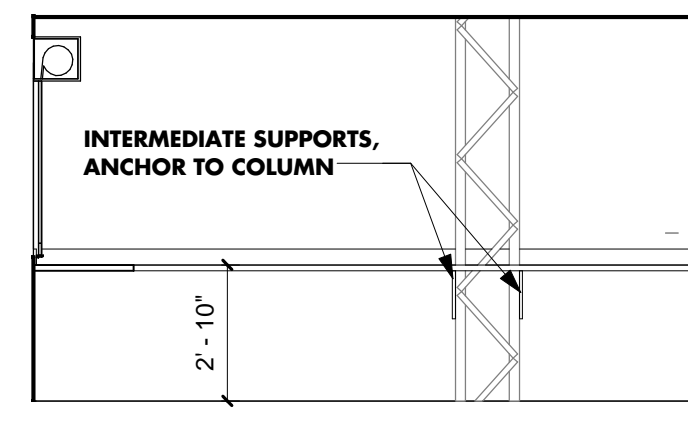
6 CRITIQUE/JURY
A-5.7 1/4" = 1'-0"



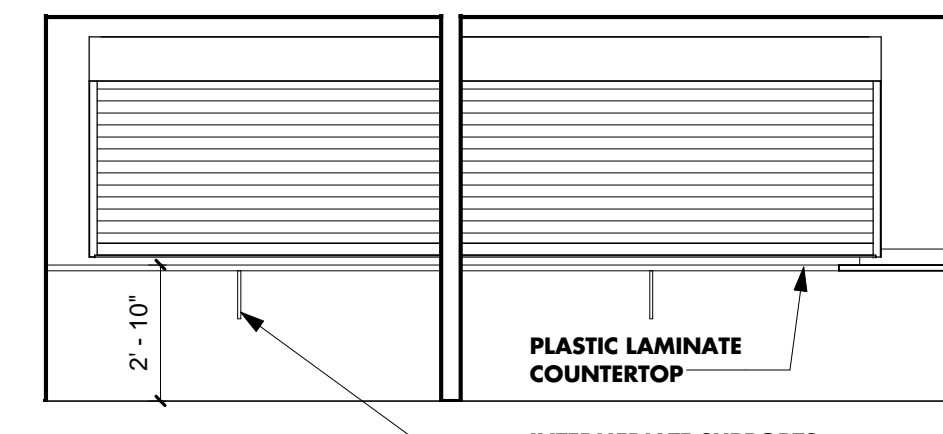
7 GENERAL DRAWING STUDIO
A-5.7 1/4" = 1'-0"



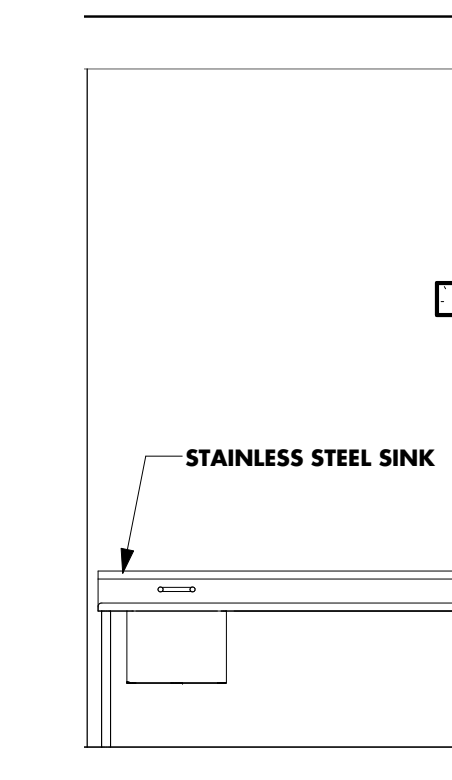
8 ETCHING
A-5.7 1/4" = 1'-0"



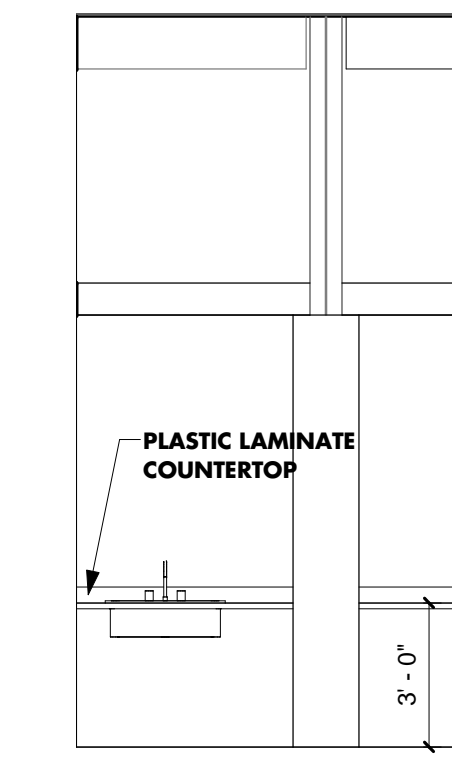
9 OFFICE 0120C - WEST
A-5.7 1/4" = 1'-0"



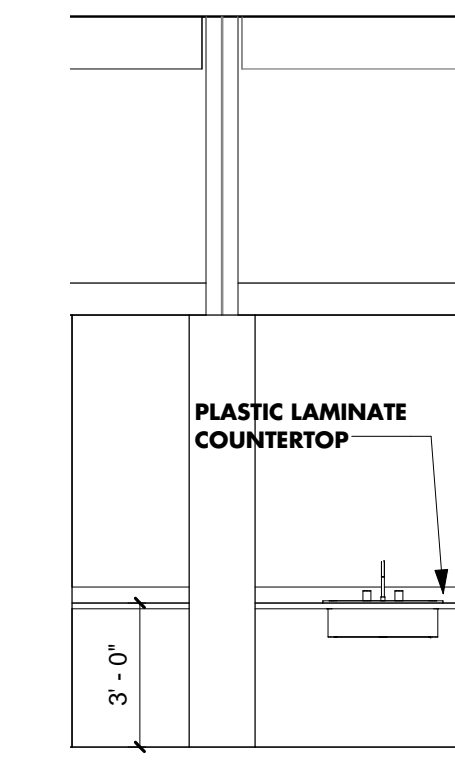
10 OFFICE 0120C - SOUTH
A-5.7 1/4" = 1'-0"



11 AS-355 STUDIO
A-5.7 1/4" = 1'-0"



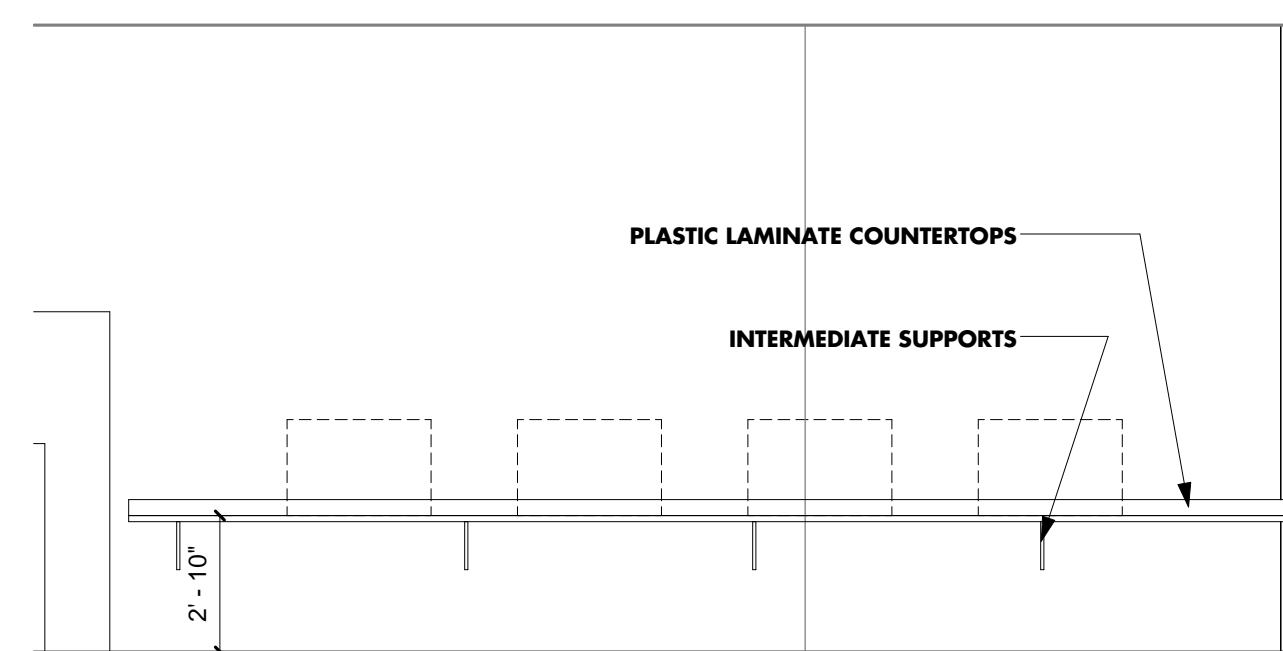
12 2D CLASSROOM 0111
A-5.7 1/4" = 1'-0"



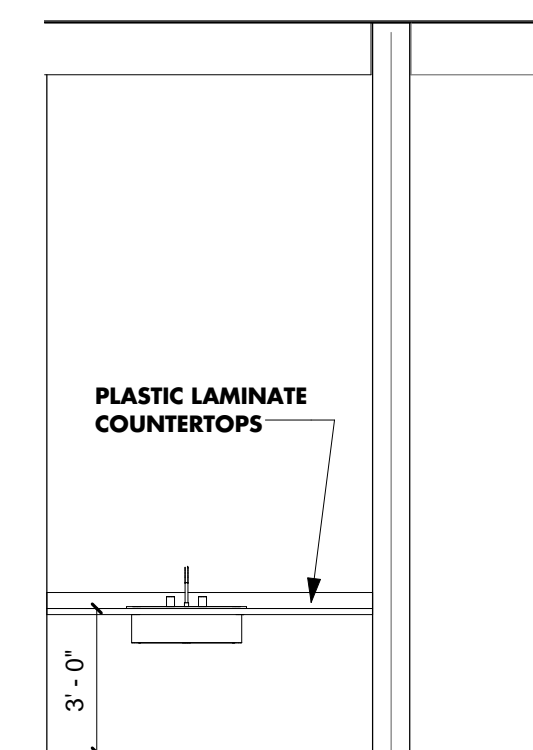
13 2D CLASSROOM 0113
A-5.7 1/4" = 1'-0"



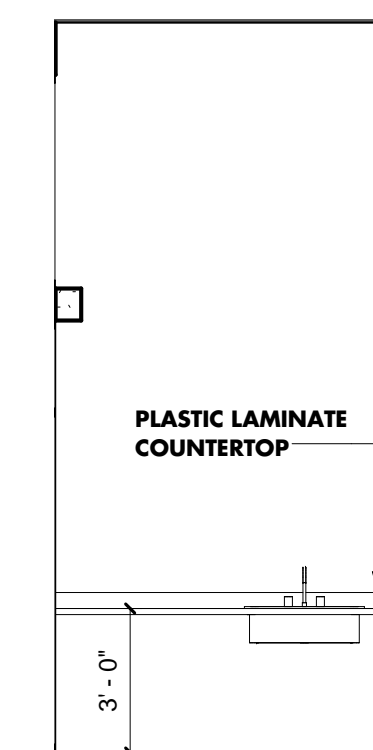
14 STORAGE 1
A-5.7 1/4" = 1'-0"



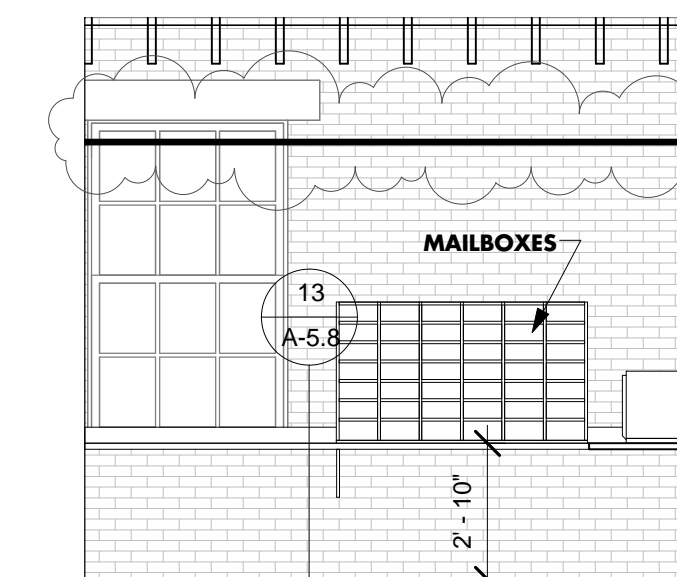
15 STUDIO 0229
A-5.7 1/4" = 1'-0"



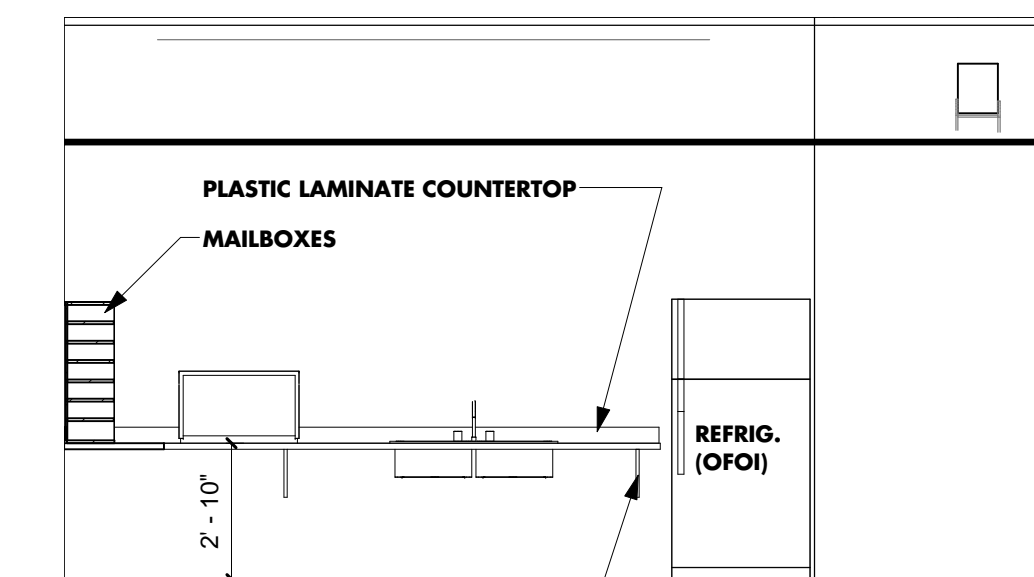
16 3D STUDIO/CLASSROOM
A-5.7 1/4" = 1'-0"



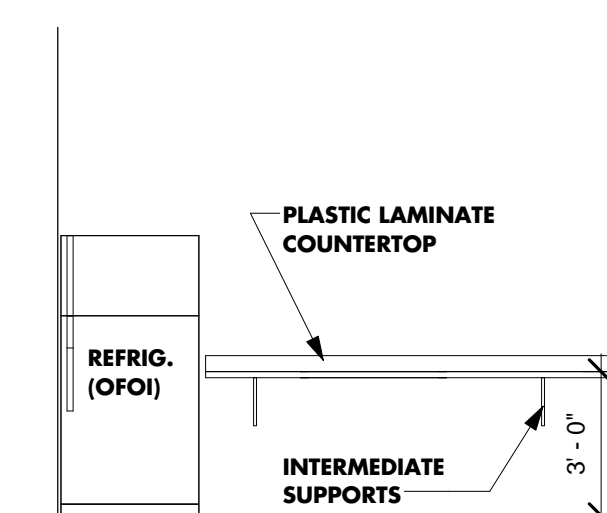
17 3D CARDBOARD STUDIO/CLASSROOM
A-5.7 1/4" = 1'-0"



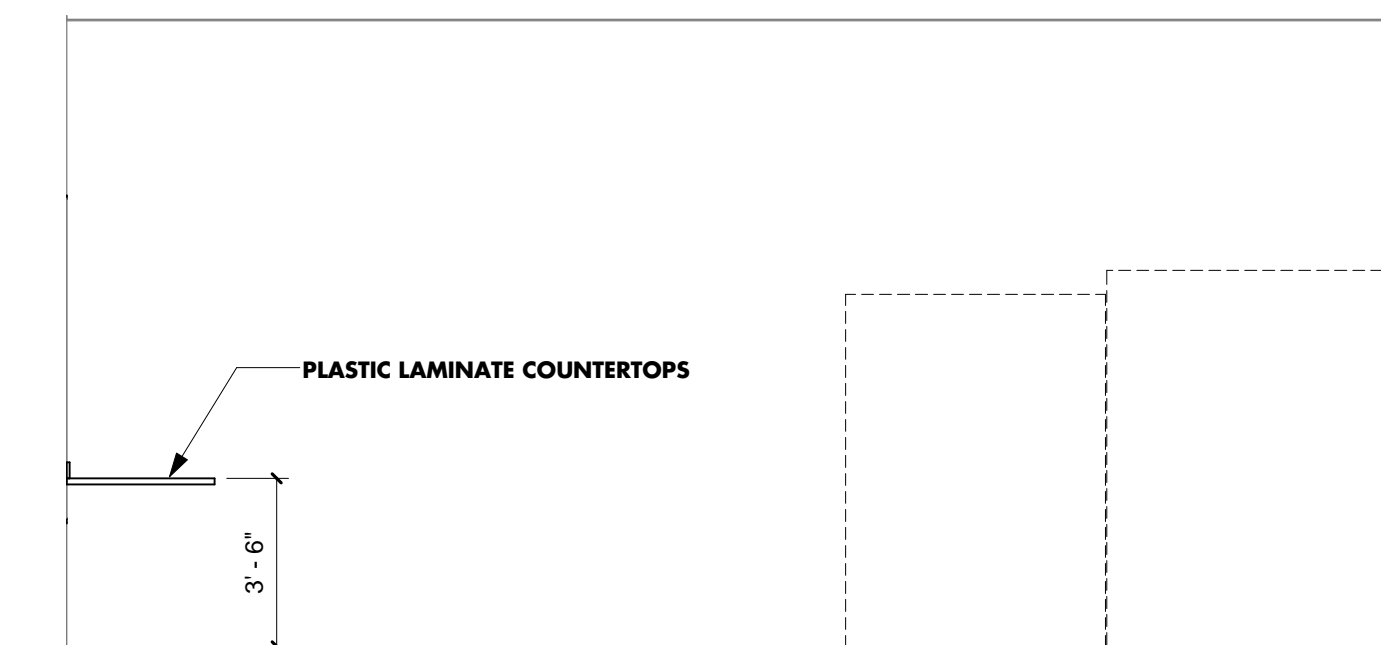
18 FACULTY WORKROOM - W. ELEV.
A-5.7 1/4" = 1'-0"



19 FACULTY WORKROOM - N. ELEV.
A-5.7 1/4" = 1'-0"



20 FACULTY LOUNGE
A-5.7 1/4" = 1'-0"



21 LITHOGRAPHY
A-5.7 1/4" = 1'-0"

UNIVERSITY LOFTS - Renovate Academic Facility UK School of Art & Visual Studies

ENLARGED CASEWORK
NOT FOR CONSTRUCTION
Job Number: 1205
Date: 05/2013
Revision: 1
Checked By: Checker
Drawn By: Author
This Drawing and the Design shown hereon are the property of Omni Architects. The reproduction, copying or other use of this drawing without the written consent of Omni Architects is prohibited.

212 North Upper Street
Lexington, Kentucky 40507-1001
p.606.252.2252
www.omniarchitects.com



PHASE 3 - CONSTRUCTION DOCUMENTS
50% REVIEW SUBMITTAL

A-5.7