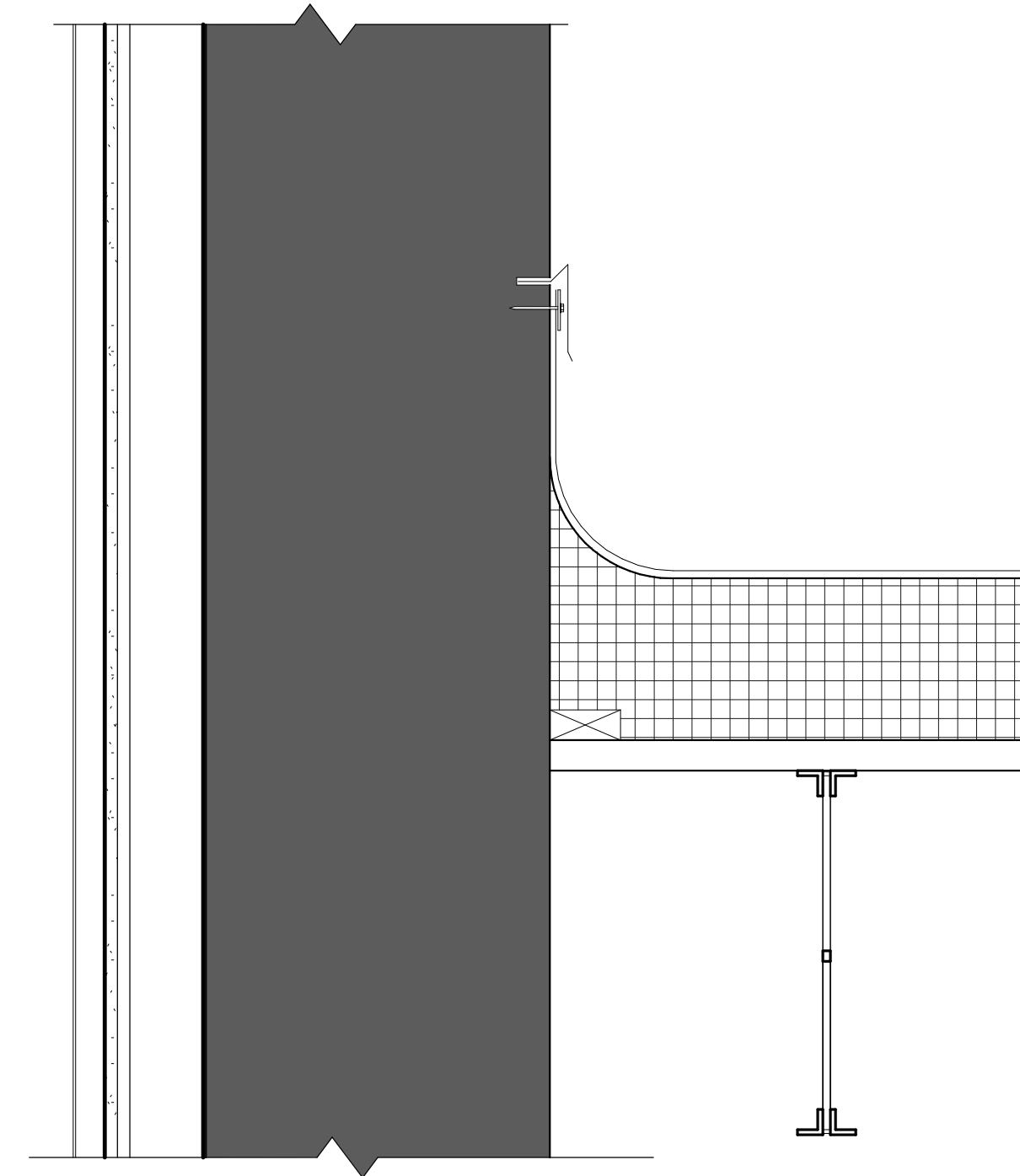
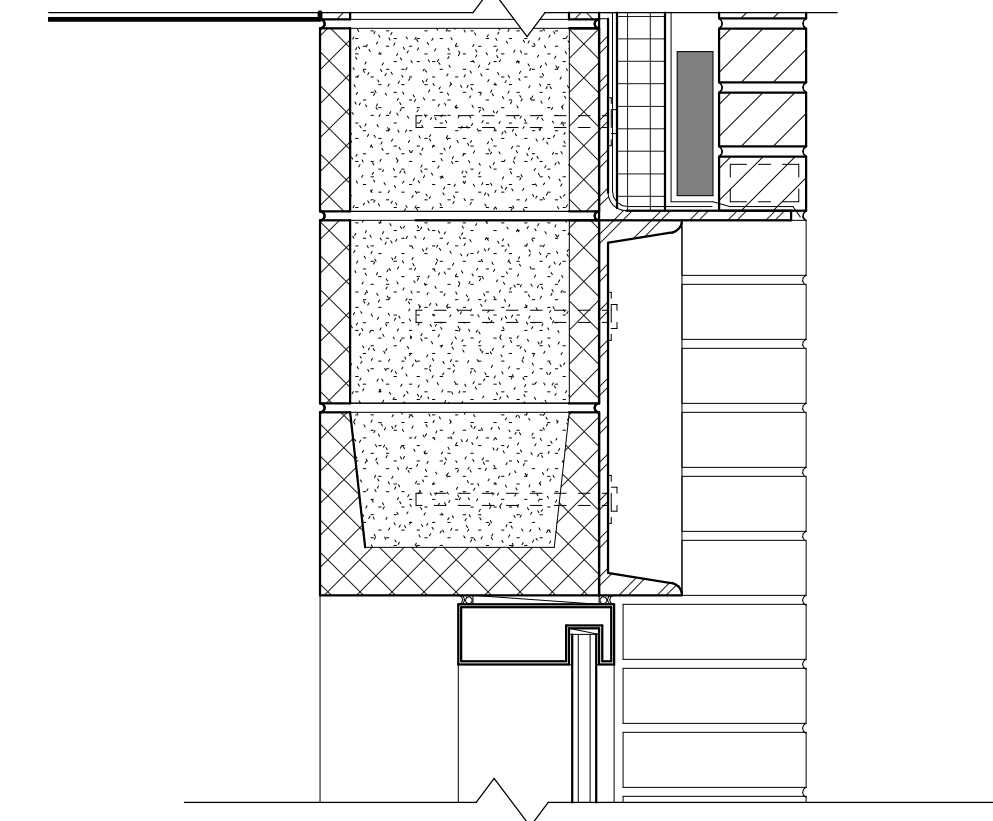


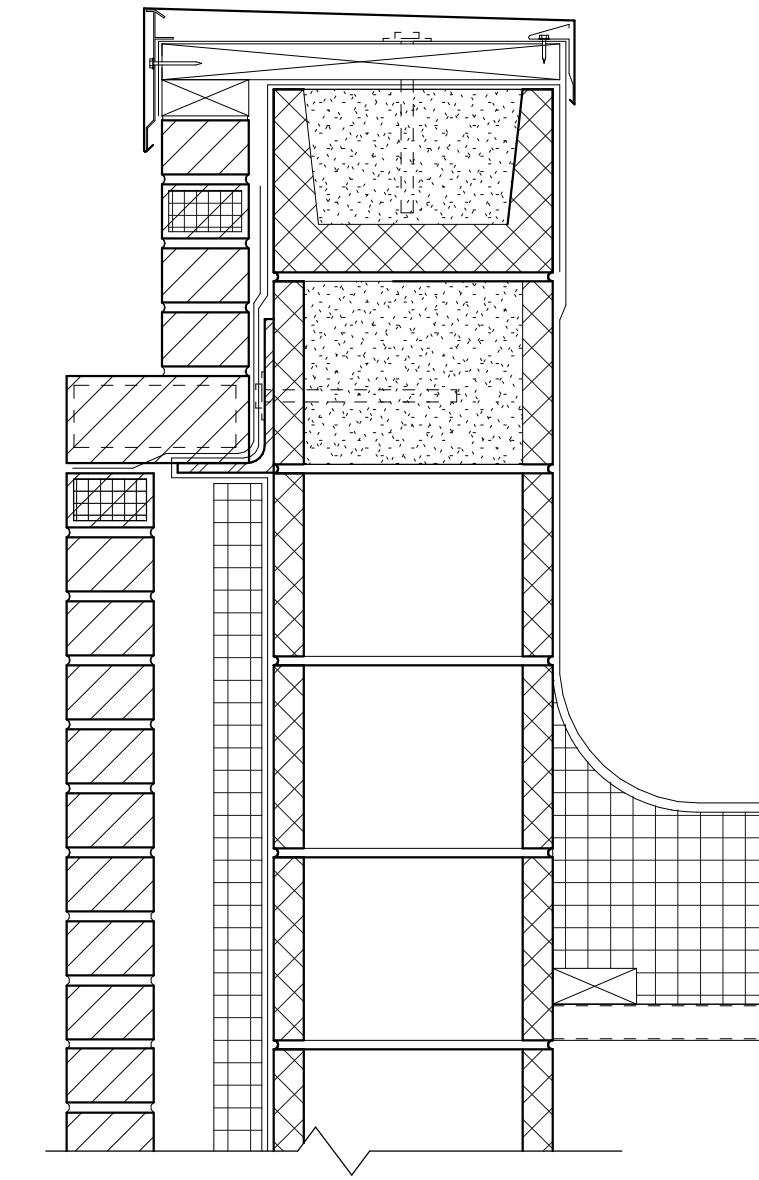
9 SECTION DETAIL @ STAIR LADDER ACCESS
A-7.1 1 1/2" = 1'-0"



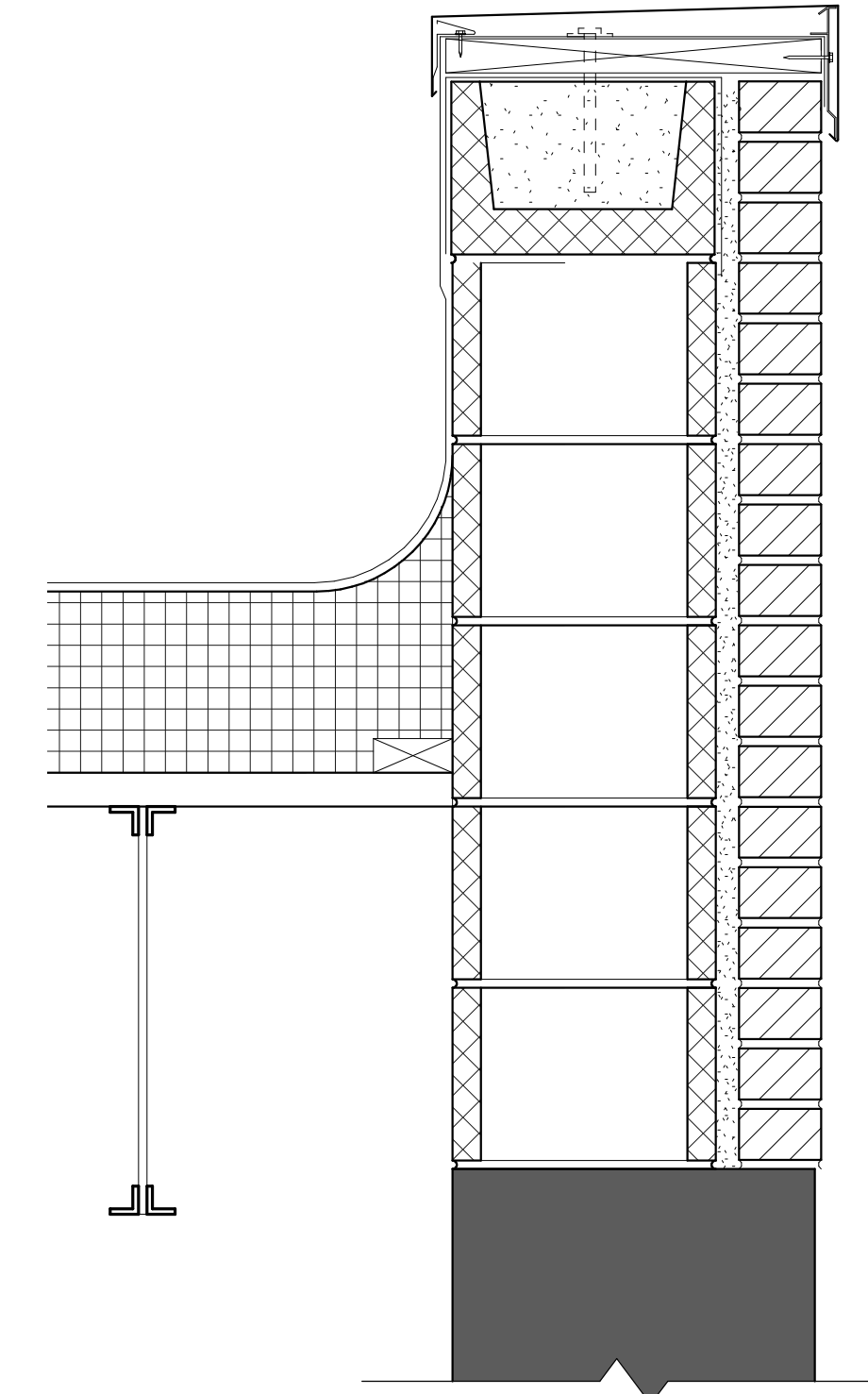
7 SECTION DETAIL @ MECH ROOF WEST WALL
A-7.1 1 1/2" = 1'-0"



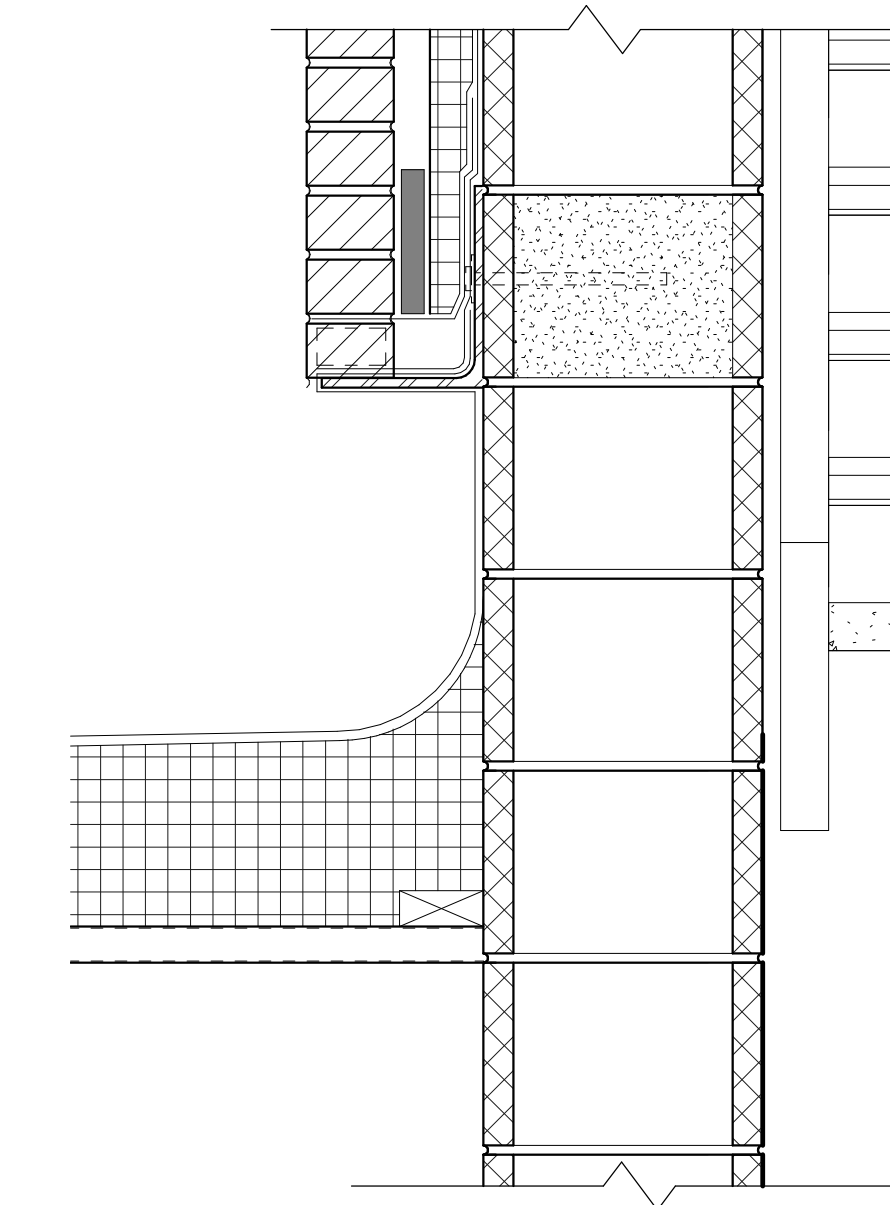
4 SECTION DETAIL @ STAIR CURTAINWALL HEAD
A-7.1 1 1/2" = 1'-0"



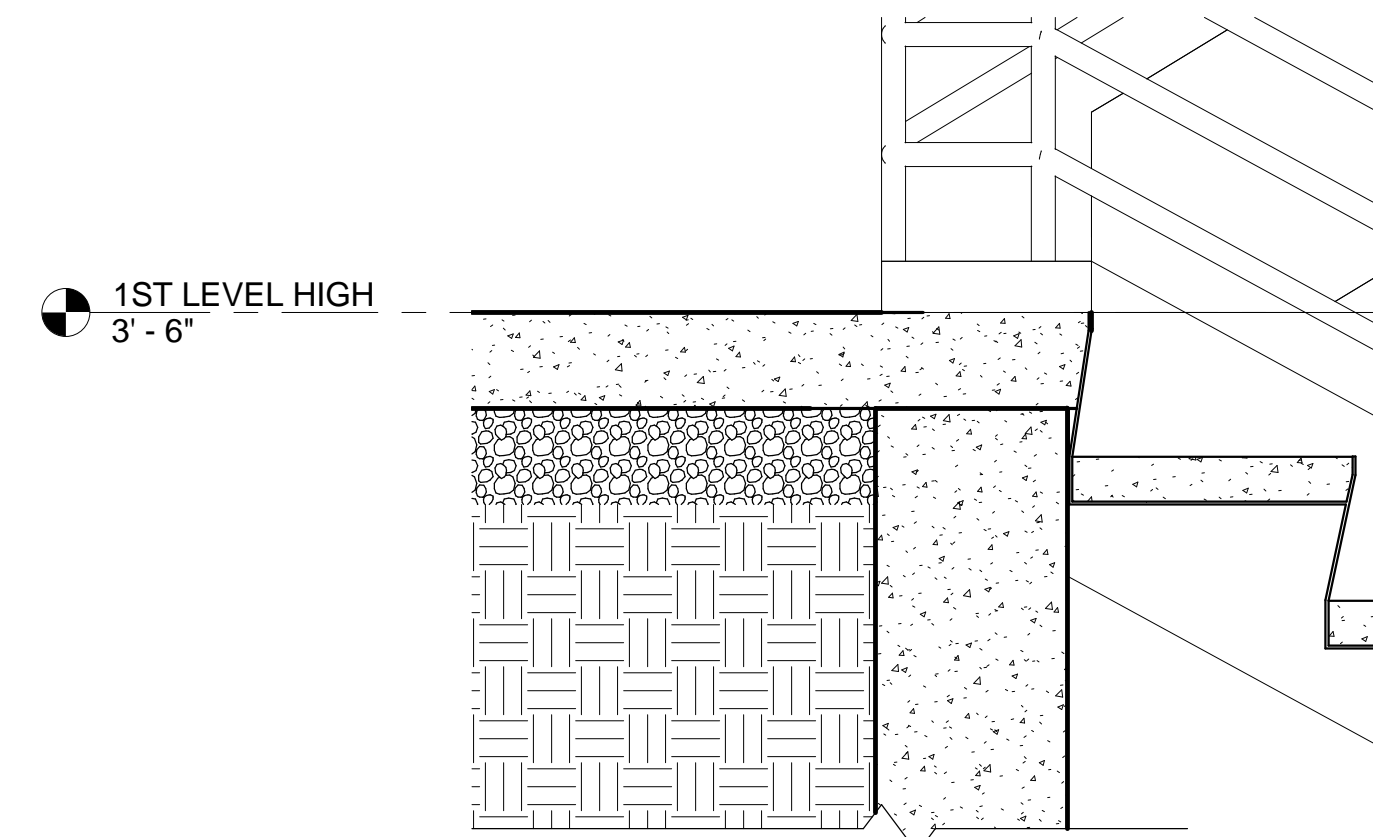
1 SECTION DETAIL @ STAIR PARAPET
A-7.1 1 1/2" = 1'-0"



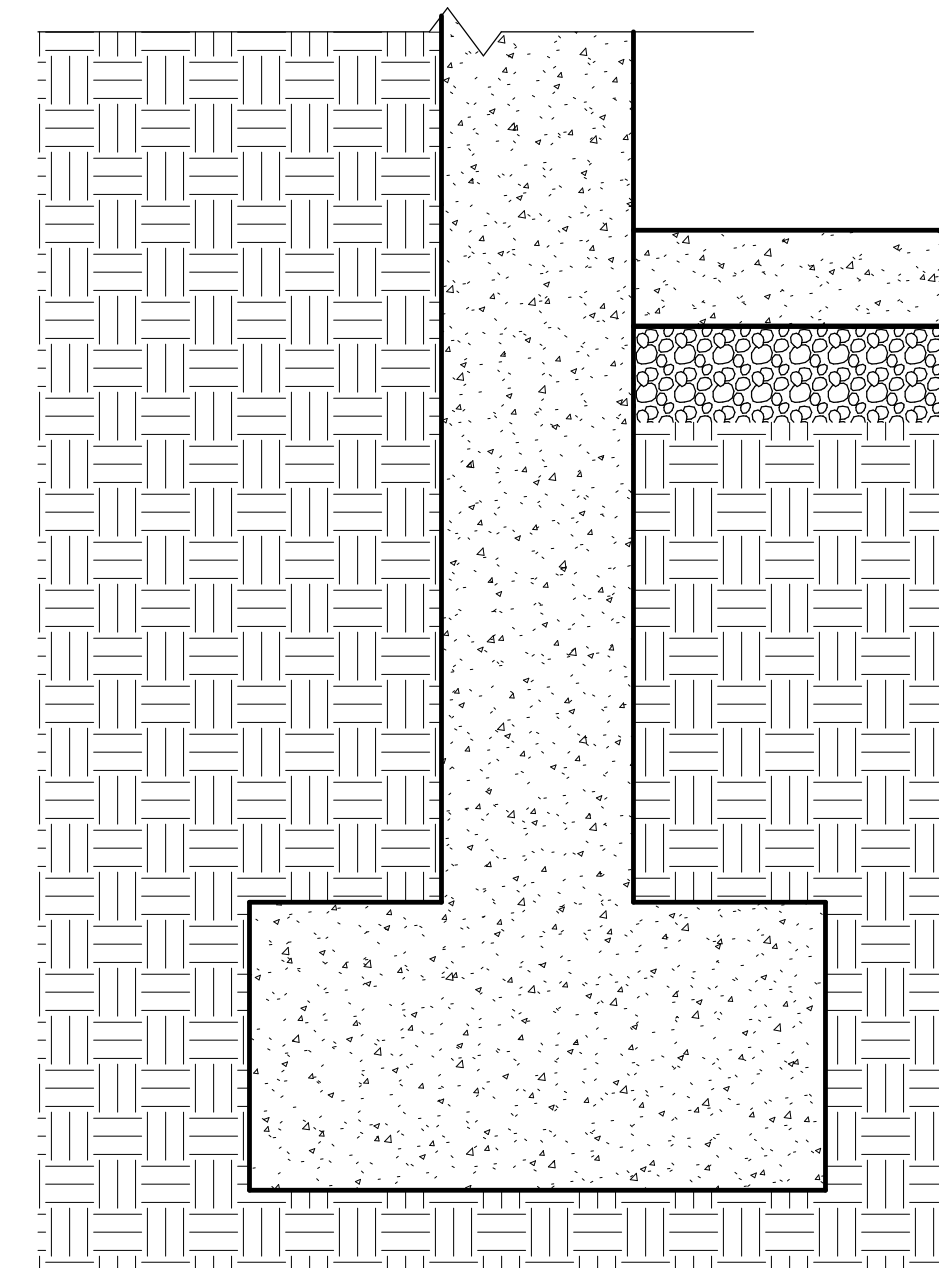
5 SECTION DETAIL @ PARAPET OF EXISTING NEW MECH. WALL
A-7.1 1 1/2" = 1'-0"



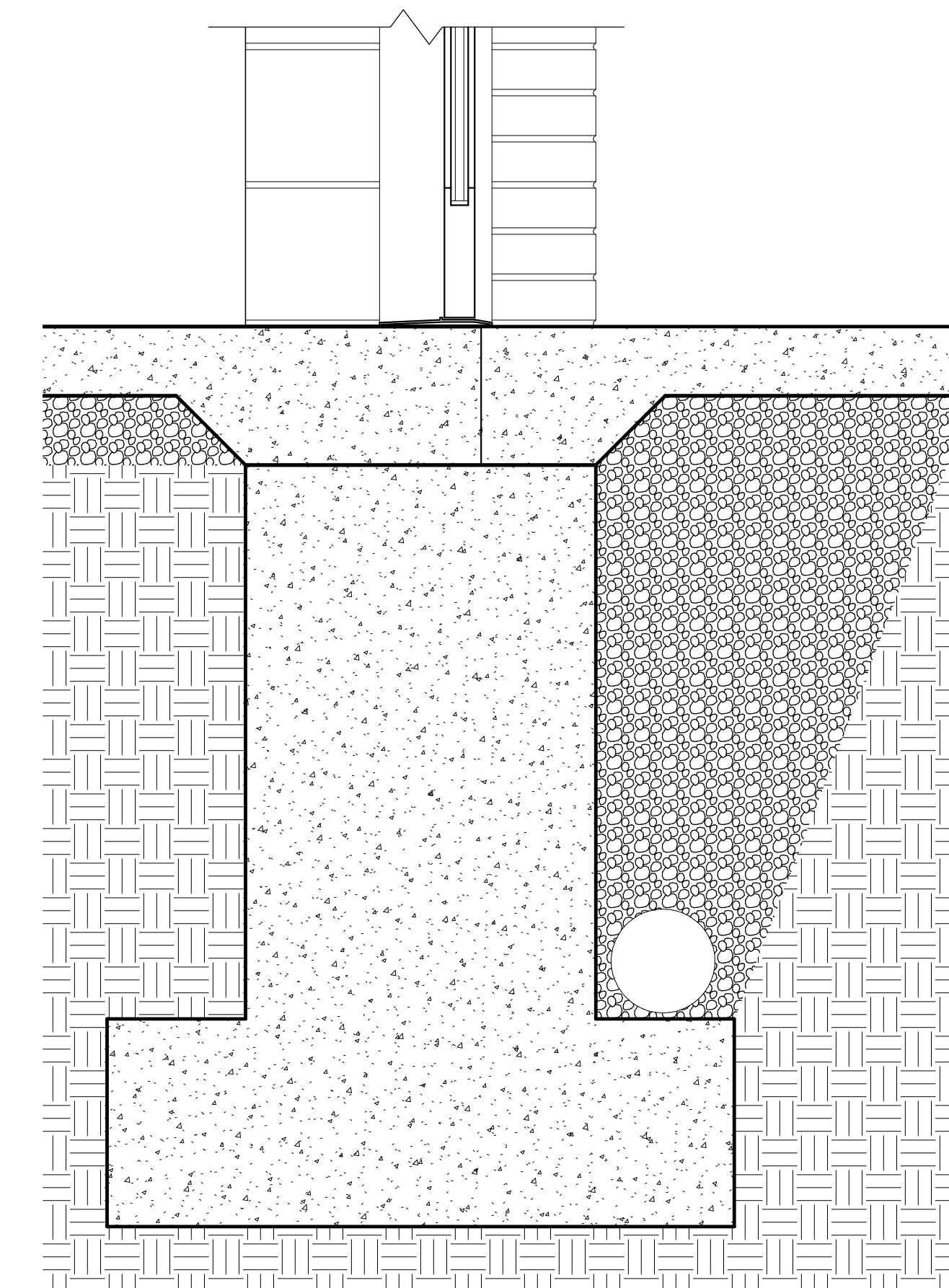
2 SECTION DETAIL @ STAIR LOW ROOF
A-7.1 1 1/2" = 1'-0"



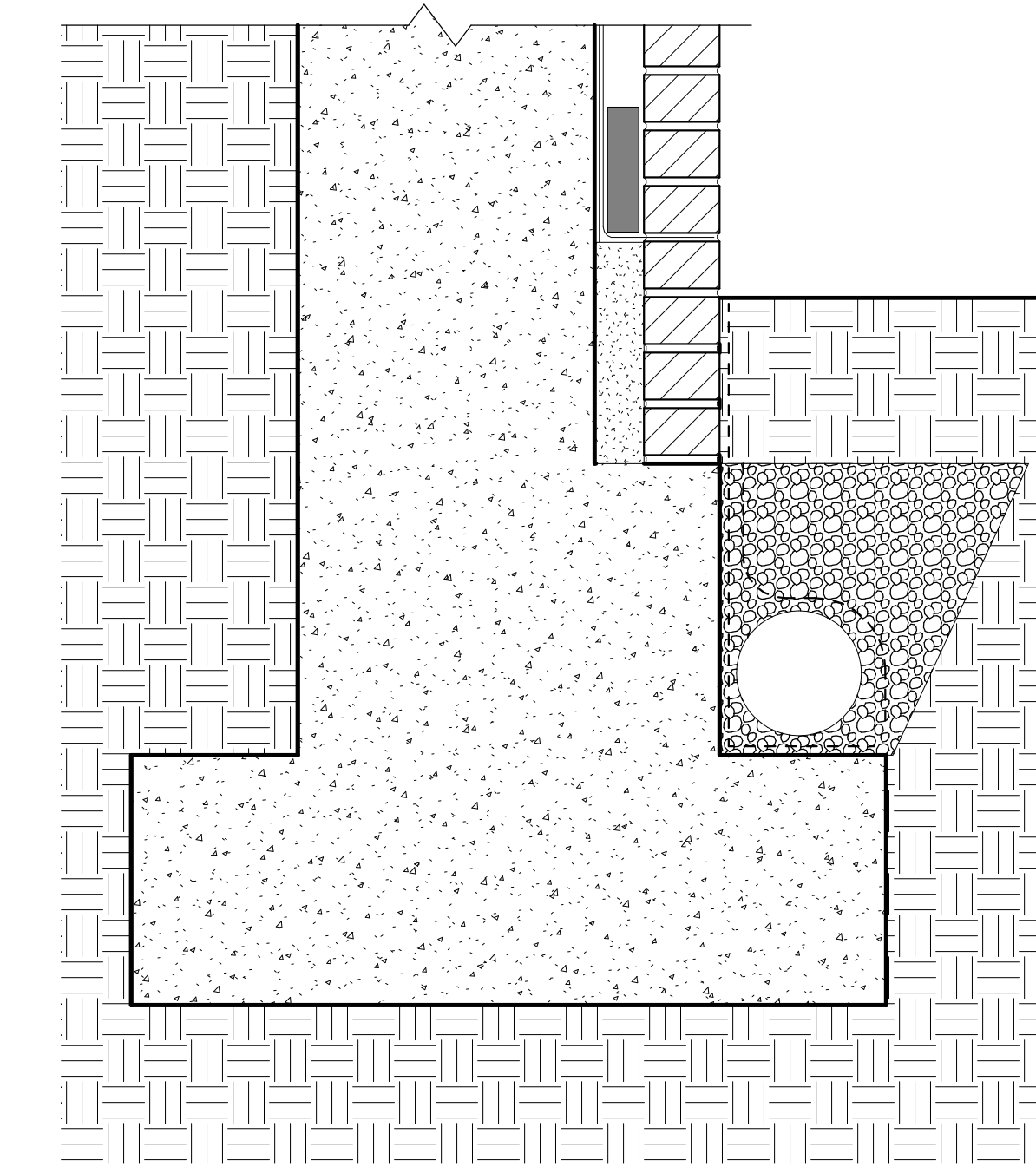
1ST LEVEL HIGH
3'-6"



8 SECTION DETAIL @ STAIR LANDING
A-7.1 1 1/2" = 1'-0"



6 SECTION DETAIL @ STAIR ENTRY DOOR SILL
A-7.1 1 1/2" = 1'-0"



3 SECTION DETAIL @ STAIR FOUNDATION
A-7.1 1 1/2" = 1'-0"

UNIVERSITY LOFTS - Renovate Academic Facility UK School of Art & Visual Studies

SECTION DETAILS

NOT FOR CONSTRUCTION Job Number: 1205 Date: 05/2013 Drawn By: Author Checked By: Checker Revision: 1

212 North Upper Street
Lexington, Kentucky 40507-1001
p.603.252.2222 f.603.252.2258
www.omniarchitects.com



This Drawing and the Design shown thereon are the property of Omni Architects. The reproduction, copying or other use of this drawing without the written consent of Omni Architects is prohibited.

PHASE 3 - CONSTRUCTION DOCUMENTS
50% REVIEW SUBMITTAL

A-7.1