

LEGEND

- ◇ FOUND MONUMENT
- AS NOTED ON SURVEY
- 2 1/2" LONG, 5/8" DIAMETER REBAR WITH SURVEYOR'S CAP (SET, PLS 3350)
- MAG NAIL WITH ID TAG (SET, PLS 3350)
- CONTROL POINT / BENCHMARK
- STREET LIGHT (LP)
- POWER POLE (PP)
- TELEPHONE POLE (TP)
- FIRE HYDRANT (FH)
- WATER VALVE (WV)
- WATER METER (WM)
- GAS METER (GM)
- GAS VALVE (GV)
- ⊙ ELECTRIC METER (EM)
- ⊙ LIGHT POLE (LP)
- ⊙ POST INDICATOR VALVE (PIV)
- ⊙ CLEAN OUT (C/O)
- ⊙ STORM MANHOLE
- ⊙ SANITARY MANHOLE
- ⊙ SIGNS
- ⊙ REINFORCED CONCRETE PIPE
- ⊙ CORRUGATED METAL PIPE
- ⊙ PVC PIPE
- ⊙ PLASTIC PIPE
- ⊙ CORRUGATED PLASTIC PIPE
- ⊙ VIRRIFIED CLAY PIPE
- ⊙ GAS METER (GM)
- ⊙ GAS VALVE (GV)
- ⊙ PER PREVIOUS SURVEY - NOT VERIFIED THIS SURVEY
- MH MANHOLE
- INV. INVERT ELEVATION
- F.L. FLOW LINE ELEVATION
- T.G. SURFACE ELEVATION (TOP-OF-GRATE)
- T.R. SURFACE ELEVATION (TOP-OF-RM)
- — — — — CHAIN LINK FENCE
- — — — — BOARD FENCE
- — — — — WATER LINE
- — — — — GAS LINE
- — — — — OVERHEAD ELECTRIC
- — — — — OVERHEAD TELEPHONE/CABLE
- — — — — UNDERGROUND ELECTRIC
- — — — — UNDERGROUND TELEPHONE/CABLE
- UM-# UTILITY MARKER
- — — — — STORM LINE (PER GIS)
- — — — — SANITARY LINE (PER GIS)
- — — — — HIGH PRESSURE STEAM (GIS)
- — — — — HIGH PRESSURE STEAM
- — — — — LOW PRESSURE STEAM
- — — — — PUMP DISCHARGE RETURN
- — — — — 12 KV ELECTRIC UNDERGROUND (GIS)
- — — — — CHILLED WATER LINE (GIS)
- — — — — UNDERGROUND TELEPHONE/FIBRE (GIS)
- — — — — DECIDUOUS TREE (LEAFY TREE)
- — — — — CONIFEROUS TREE (EVERGREEN)
- — — — — INDICATES ORIGIN OR OUTLET OF UTILITY OR PIPE IS UNKNOWN

UTILITY MARKER LEGEND

UM #	Description
1	6" Storm & 4" Sanitary - 3'-6" Deep
2	24" CHWS - 7'-6" Deep
3	12KV Electric - 5'-2" Deep
4	Tel&Comm Conduit 36" Deep
5	6" Sanitary - 4'-2" Deep
6	Tel&Comm Conduit 36" Deep
7	6" CHWS & CHWR - 4' Deep
8	24" CHWS & CHWR - 7'-6" Deep
9	6" HPS & 4" PDR - 4'-2" Deep
10	3" PVC Conduit (Central Conduits)
11	4" & 6" Sanitary - 5' Deep
12	6" Storm - 3'-6" Deep
13	Secondary Circuit 120/240 Volt 3Ø Deep
14	TSKY to Pad Mount Transformer

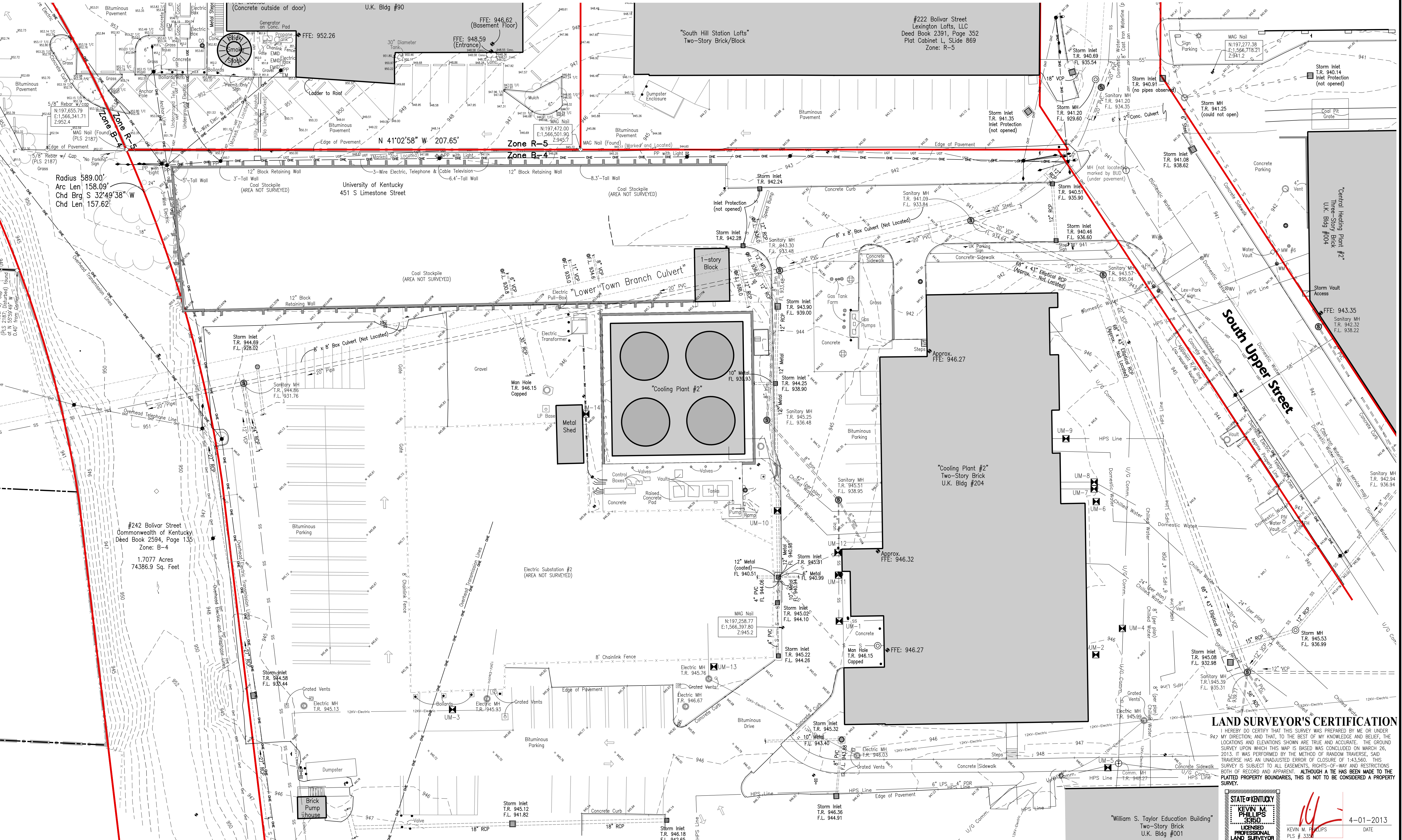
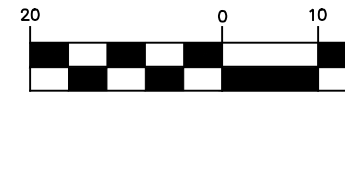
ORIGIN OF COORDINATES

THE BEARINGS SHOWN HEREON ARE BASED ON KENTUCKY STATE PLANE GRID NORTH, NORTH AMERICAN DATUM OF 1983 (NAD 83). PARTICULARLY, THE BEARINGS ARE BASED ON A GPS SURVEY UTILIZING A TRIMBLE R8 GPS RECEIVER LINKED TO CONTINUOUSLY OPERATING REFERENCE STATION (CORS) "KYTC", HAVING A POINT DESIGNATION OF "KY HWY DIST 7 COR5 ARP" AND HAVING GEOGRAPHIC COORDINATES OF N 38° 04' 31.96484", W 084° 29' 31.91127" AND KENTUCKY STATE PLANE COORDINATES (NORTH ZONE, NAD 83) OF N=209,882.94', E=1,570,696.89'.

ORIGIN OF ELEVATIONS

THE ELEVATIONS SHOWN HEREON ARE BASED ON NORTH AMERICAN VERTICAL DATUM OF 1988. PARTICULARLY, THE ORIGIN OF ELEVATIONS IS THE CORS STATION "KYTC" DESCRIBED ABOVE. THE PUBLISHED ELEVATION OF THIS MONUMENT IS 978.93 FEET (NAVD 88).

GRAPHIC SCALE



REVISION NUMBER	REASON	DATE

E E ENDRIS
Engineering
 Civil Design - Construction Layout - GPS

771 ENTERPRISE DRIVE
 LEXINGTON, KY 40510
 PH: 859.263.1425
 FAX: 859.263.1436
 email: endris@endris.com

University Lofts and U.K. Coal Pile & Cooling Plant #2 Area
 236 Bolivar Street, 591 South Upper Street
 Lexington, Fayette County, Kentucky

SURVEY OF
3-26-2013

JOB NUMBER 3095A
DRAWING DATE 4-01-2013
DRAWING FILE 3095 University Lofts
SCALE: 1" = 20'
 0 20'
DATE 4-01-2013

LAND SURVEYOR'S CERTIFICATION

I HEREBY DO CERTIFY THAT THIS SURVEY WAS PREPARED BY ME OR UNDER MY DIRECTION; AND THAT, TO THE BEST OF MY KNOWLEDGE AND BELIEF, THE LOCATIONS AND ELEVATIONS SHOWN ARE TRUE AND ACCURATE. THE GROUND SURVEY UPON WHICH THIS MAP IS BASED WAS COMPLETED ON MARCH 26, 2013. IT WAS PERFORMED BY THE METHOD OF RANDOM TRAVERSE. SAGD TRAVERSE HAS AN UNADJUSTED ERROR OF CLOSURE OF 1:43,560. THIS SURVEY IS SUBJECT TO ALL EASEMENTS, RIGHTS-OF-WAY AND RESTRICTIONS BOTH OF RECORD AND APPARENT. ALTHOUGH A TIE HAS BEEN MADE TO THE RELATED PROPERTY BOUNDARIES, THIS IS NOT TO BE CONSIDERED A PROPERTY SURVEY.

STATE OF KENTUCKY
KEVIN M. PHILLIPS
 LICENSED
 PROFESSIONAL LAND SURVEYOR
 PLS # 3350

DATE 4-01-2013