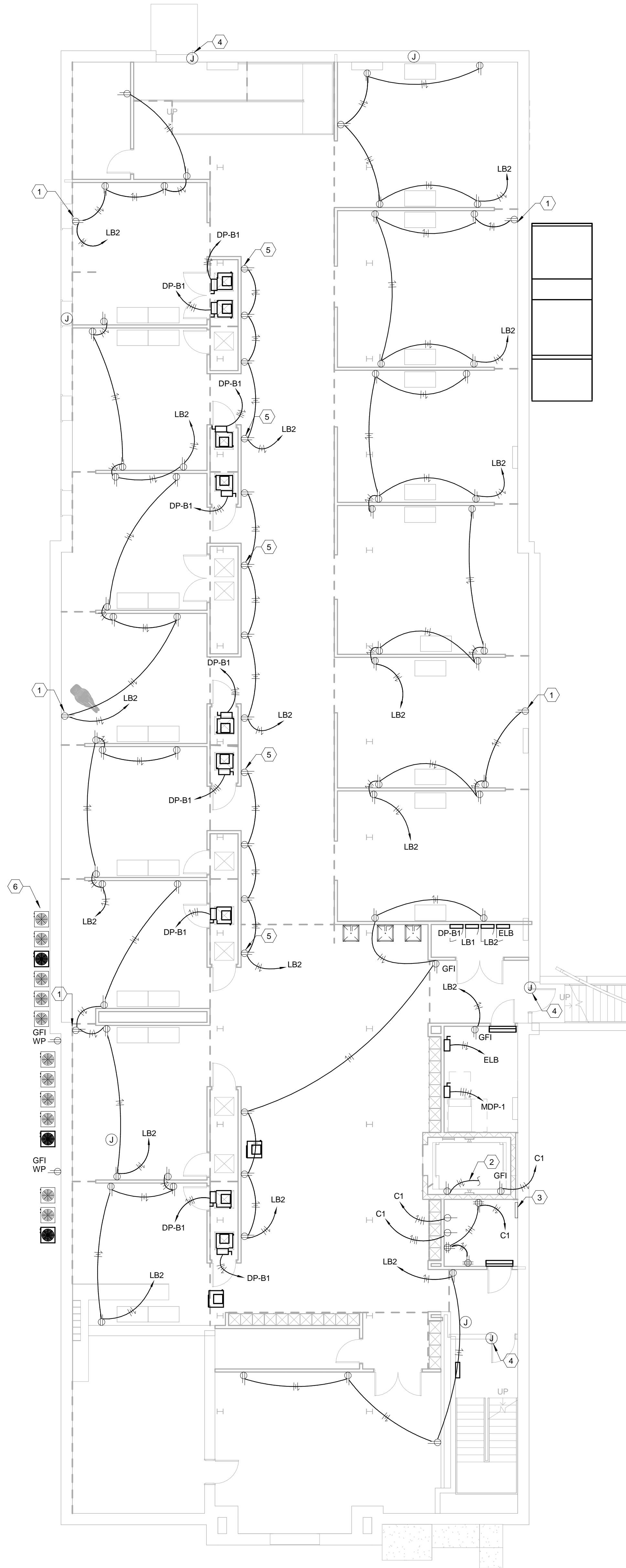


1 POWER DESIGN BASEMENT PLAN
1/8" = 1'-0"



- POWER GENERAL NOTES
- ALL PENETRATIONS IN FIRE RATED WALLS ARE TO BE SEALED AND FIRE STOPPED BY A U.L. LISTED FIRE ASSEMBLY AND APPROVED MANNER.
 - REFER TO ARCHITECT'S CASEWORK/FURNITURE DETAILS AND ROOM ELEVATIONS FOR EXACT LOCATION AND MOUNTING HEIGHTS OF DEVICES, ETC.
 - PROVIDE PULL WIRES IN EACH EMPTY CONDUIT LEFT FOR FURNITURE USE.
 - ALL WIRING SHALL BE #12 WITH A #12 GROUND (U.O.N.).
- POWER DESIGN BASEMENT PLAN TAGGED NOTES
- EXISTING RECEPTACLE TO REMAIN. RECIRCUIT TO NEW PANEL AS SHOWN.
 - CONNECT TO ELEVATOR PIT LIGHT FIXTURE CIRCUITS.
 - TELECOM ROOM GROUNDING BAR; BASEMENT TO BE CONNECTED TO SERVICE ENTRANCE GROUND AT HDF.
 - PROVIDE POWER FOR DOOR HARDWARE AND/OR SECURITY DEVICES. SEE SYSTEM DRAWING FOR DEVICE TYPES.
 - RECEPTACLES SHOWN AT THIS WALL ARE TO BE MOUNTED HORIZONTALLY AT 48" ABOVE FINISHED FLOOR. COORDINATE DEVICE WITH ARCHITECT'S BASE BOARD SO RECEPTACLES DO NOT INTRUDE ON BASE FINISH.
 - PROVIDE DISCONNECT FOR MECHANICAL UNIT. (TYPICAL OF 14)

UNIVERSITY LOFTS - Renovate Academic Facility UK School of Art & Visual Studies

POWER DESIGN BASEMENT PLAN

NOT FOR CONSTRUCTION Job Number: 1205 Date: 03/2013

Drawn By: Author Checked By: Checker Revision:



212 North Upper Street
Lexington, Kentucky 40507-1001
p.603.252.2222
www.omniarchitects.com

This Drawing and the Design shown thereon are the property of Omni Architects. The reproduction, copying or other use of this drawing without the written consent of Omni Architects is prohibited.

PRE-DESIGN

E4.0