

# UNIVERSITY LOFTS - Renovate Academic Facility UK School of Art & Visual Studies

AIR DISTRIBUTION DESIGN BASEMENT PLAN

NOT FOR CONSTRUCTION Job Number: 1205

Date: 03/2013

Drawn By: Author

Checked By: Checker

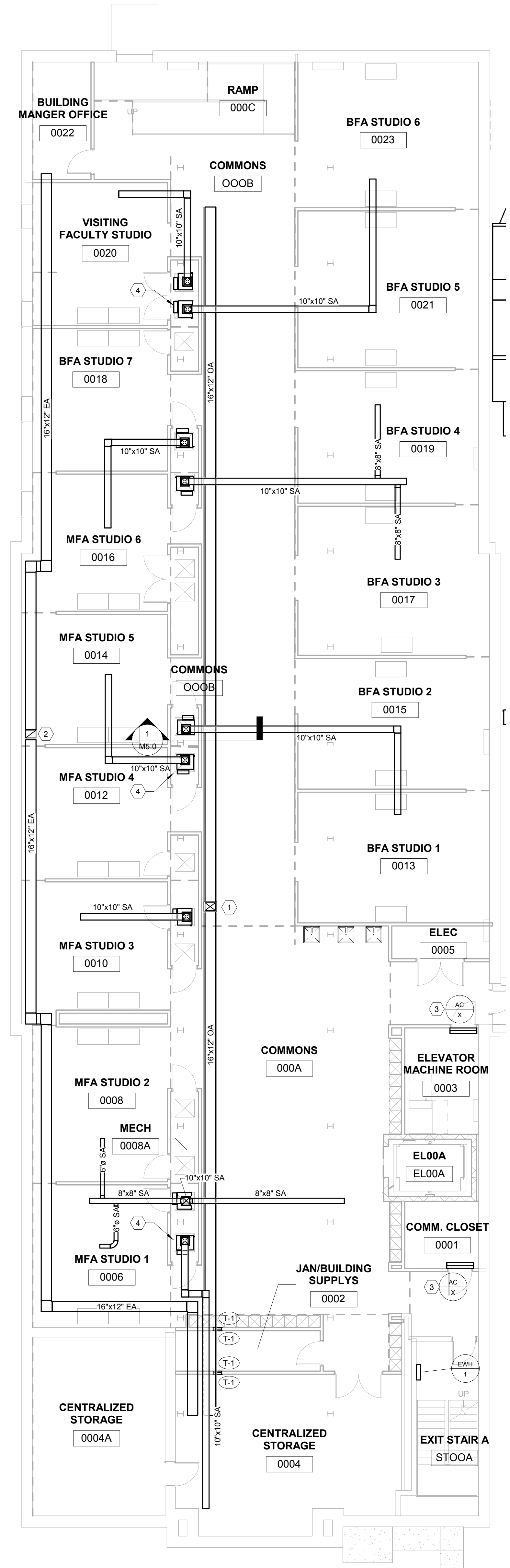
Revision:



212 North Upper Street  
Lexington, Kentucky 40507-1001  
www.omniarchitects.com

This Drawing and the Design shown thereon are the property of Omni Architects. The reproduction, copying or other use of this drawing without the written consent of Omni Architects is prohibited.

PRE-DESIGN  
**M3.0**



1 AIR DISTRIBUTION DESIGN BASEMENT PLAN  
1/8" = 1'-0"

AIR DISTRIBUTION GENERAL NOTES

- A ALL EXPOSED DUCT WORK SHALL BE DUAL-WALL DUCT AND PAINTED. REFER TO SPECIFICATIONS FOR ADDITIONAL INFORMATION. COLOR SELECTED BY ARCHITECT.
- B ALL DARKROOM PENETRATIONS SHALL BE SEALED AIR TIGHT TO PREVENT ILLUMINATION SPILL FROM ADJACENT SPACE.

AIR DISTRIBUTION DESIGN BASEMENT PLAN TAGGED NOTES (X)

- 1 ROUTE OUTSIDE AIR DUCT UP. REFER TO AIR DISTRIBUTION FIRST FLOOR PLAN FOR CONTINUATION.
- 2 ROUTE EXHAUST DUCT UP. REFER TO AIR DISTRIBUTION FIRST FLOOR PLAN FOR CONTINUATION.
- 3 MOUNT UNIT ABOVE DOOR.
- 4 RELOCATED EXISTING INDOOR UNIT. TYPICAL.