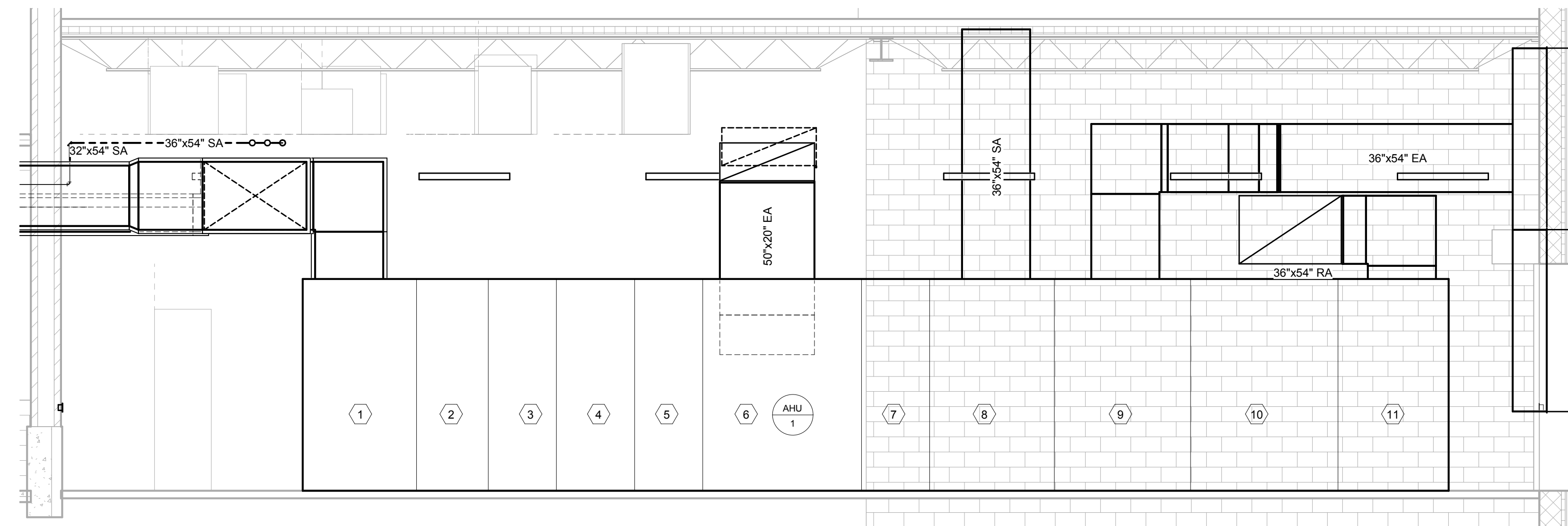
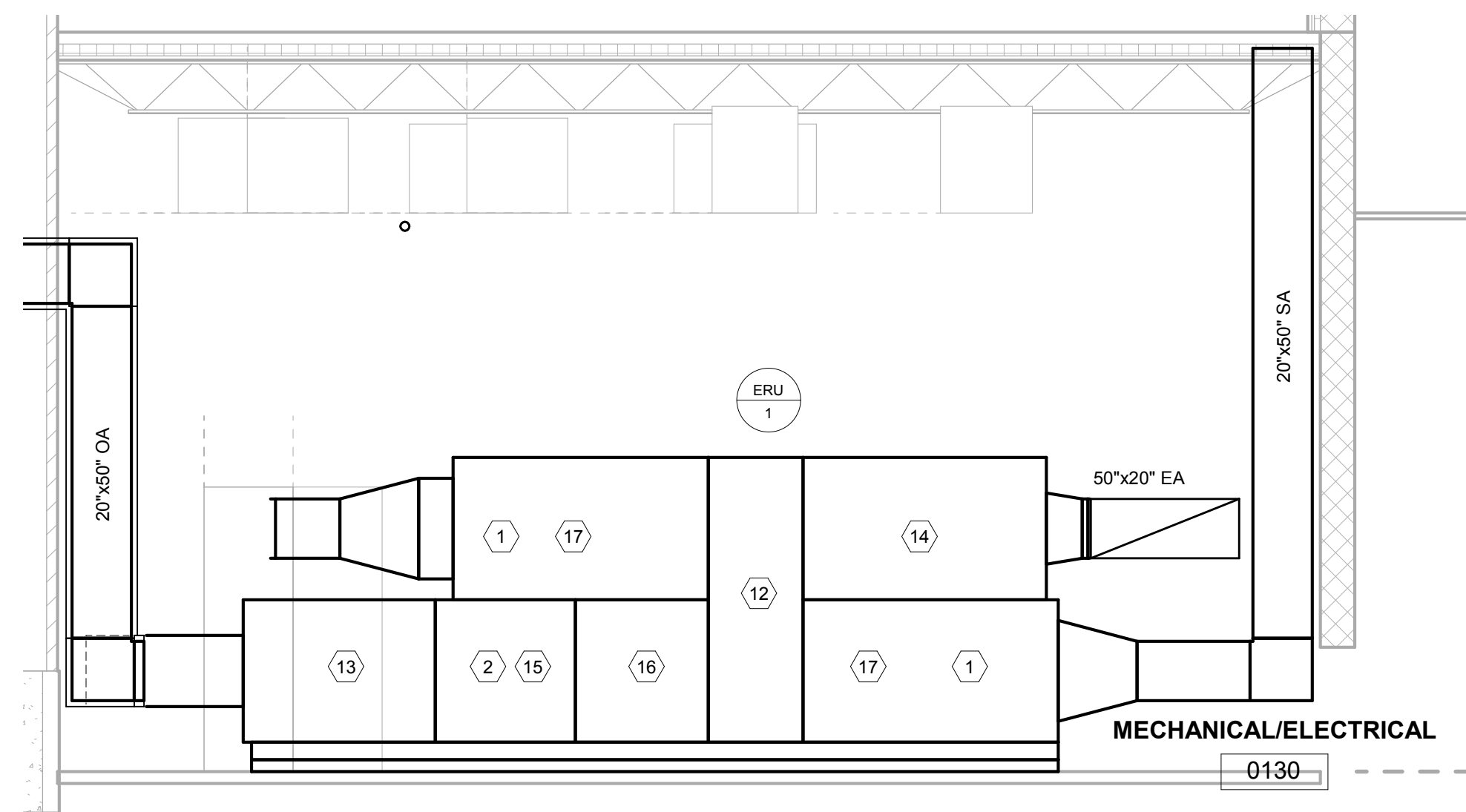


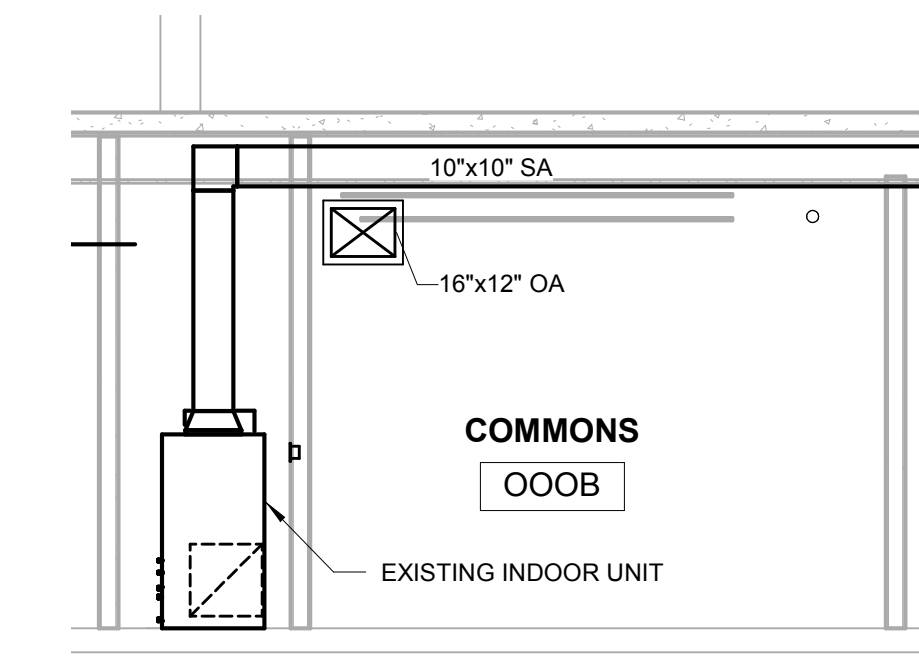
This Drawing and the Design shown thereon are the property of Omni Architects. The reproduction, copying or other uses of this drawing without the written consent of Omni Architects is prohibited.



3 AIR HANDLING UNIT SECTION
1/4" = 1'-0"



2 ENERGY RECOVERY UNIT SECTION
1/4" = 1'-0"



1 BASEMENT COMMONS
1/4" = 1'-0"

MECHANICAL SECTIONS TAGGED NOTES

- 1 PLENUM SECTION.
- 2 CHILLED WATER COIL SECTION.
- 3 ACCESS SECTION.
- 4 PREHEAT SECTION.
- 5 ACCESS SECTION.
- 6 SUPPLY FAN SECTION.
- 7 AIR BLENDER SECTION.
- 8 FILTER/MIXING SECTION.
- 9 RELIEF AIR SECTION.
- 10 RETURN FAN SECTION.
- 11 PLENUM SECTION.
- 12 ENERGY RECOVERY WHEEL.
- 13 OUTSIDE AIR FAN.
- 14 EXHAUST AIR FAN.
- 15 FACE AND BYPASS SECTION.
- 16 HOT WATER COIL.
- 17 FILTER SECTION.

UNIVERSITY LOFTS - Renovate Academic Facility UK School of Art & Visual Studies

MECHANICAL SECTIONS

NOT FOR CONSTRUCTION Job Number: 1205

Date: 03/2013

Drawn By: Author

Checked By: Checker

Revision:



212 North Upper Street
Lexington, Kentucky 40507-1001
www.omniarchitects.com

This Drawing and the Design shown thereon are the property of Omni Architects. The reproduction, copying or other uses of this drawing without the written consent of Omni Architects is prohibited.

PRE-DESIGN

M5.0