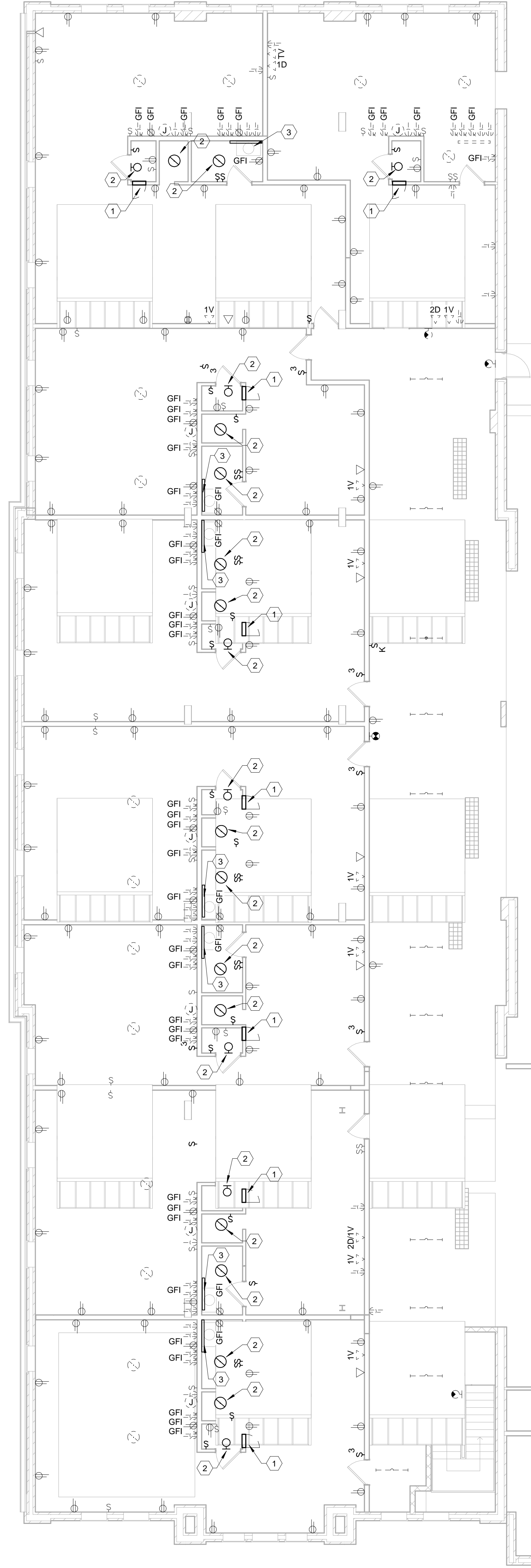


2 ELECTRICAL DEMO THIRD FLOOR PLAN -
BASE BID
1/8" = 1'-0"



1 ELECTRICAL DEMO THIRD FLOOR PLAN -
ALTERNATE
1/8" = 1'-0"

- GENERAL DEMOLITION NOTES
- A. HEAVY DASHED LINES INDICATE ITEMS FOR REMOVAL (U.O.N.) AND LIGHT SOLID LINES INDICATE EXISTING ITEMS TO REMAIN.
 - B. THE CONTRACTOR SHALL MAINTAIN THE CONTINUITY OF EXISTING CIRCUITS THAT CONTAIN DEVICES OR EQUIPMENT THAT ARE TO REMAIN. WHEN DEMOLITION OF AN ELECTRICAL DEVICE OR CIRCUIT IS INDICATED ON THE DRAWINGS, THE CONTRACTOR SHALL INSURE THAT OTHER DEVICES OR EQUIPMENT "UPSTREAM" OR "DOWNSTREAM" ON THE CIRCUITS SHALL REMAIN IN "PRE-DEMOLITION" WORKING ORDER. "LEFT-OVER" CIRCUIT BREAKERS SHALL REMAIN AND BE LABELED AS SPARES IN THEIR PANELS. PROVIDE NEW TYPEWRITTEN DIRECTORIES FOR ALL PANELS AFFECTED.
 - C. LOCATIONS OF DEVICES, CONNECTIONS, ETC., INDICATED ON THIS DRAWING WERE TAKEN FROM VARIOUS SOURCES. THEY ARE DIAGRAMMATIC ONLY AND ARE SUBJECT TO VARIATION FROM EXISTING CONDITIONS. CERTAIN EXISTING ELEMENTS MAY NOT BE INDICATED AT ALL. THE CONTRACTOR PROPOSING TO DO ANY PART OF THE WORK INDICATED HERE-ON SHALL VISIT THIS SITE AND DETERMINE TO HIS SATISFACTION THAT THEY MAY COMPLETE ALL WORK REQUIRED FOR THE BID WHICH HE PROPOSES.
 - D. REMOVE ALL ASSOCIATED CONDUIT AND CONDUCTORS FOR DEVICES/FIXTURES/ETC. BEING REMOVED, WHETHER INDICATED OR NOT (U.O.N.).
 - E. COORDINATE DISPOSAL OF ALL FIXTURES, DEVICES, ETC. (INDICATED FOR DEMOLITION) WITH THE OWNER.
 - F. CONTRACTOR TO VERIFY THAT THERE ARE NO ELECTRICAL CIRCUITS IN CHASES BEING REMOVED UNDER DEMOLITION WHICH MUST REMAIN IN SERVICE AND CANNOT BE REMOVED. SHOULD SUCH CIRCUITS BE ENCOUNTERED, THE CONTRACTOR IS TO REROUTE AND RECONNECT AS REQUIRED TO MAINTAIN SERVICE.
 - G. THE CONTRACTOR SHALL REFER TO THE ARCHITECTURAL PLANS FOR AREAS IN WHICH THE CEILING IS REMAINING. THE CONTRACTOR IS RESPONSIBLE FOR REMOVING THE EXISTING CEILING AS REQUIRED. TEMPORARILY SUPPORT LIGHTS, DIFFUSERS, CEILING ETC. REPLACE BROKEN CEILING TILES WITH NEW. FIELD VERIFY EXACT REQUIREMENTS.
 - H. ALL OUTAGES SHALL BE SCHEDULED THROUGH THE UK CPMD PROJECT REPRESENTATIVE FOR PROPER COORDINATION. A REQUEST FOR AN OUTAGE SHALL BE SUBMITTED IN WRITING A MINIMUM OF TWO WEEKS IN ADVANCE.
 - I. CONTRACTOR IS TO REMOVE CABLE TV DISTRIBUTION CABINETS AND ASSOCIATED CO-AX CABLE.
 - J. REFERENCE PLUMBING AND HVAC DEMOLITION PLANS. ELECTRICAL CONTRACTOR TO REMOVE ELECTRICAL CONNECTIONS FOR EQUIPMENT TO BE REMOVED.
 - K. ALL CEILING MOUNTED DEVICES IN BASEMENT TO BE REMOVED (ALTERNATE AND BASE BID), BASEMENT LIGHTING IS TO BE REINSTALLED IN NEW CEILING AT EXISTING LOCATION (BASE BID).

- ELECTRICAL DEMO THIRD FLOOR PLAN TAGGED NOTES (X)
- 1 EXISTING PANEL TO REMAIN. PANEL FEEDER TO BE FED FROM RELOCATED DISTRIBUTION PANEL.
 - 2 EXISTING FIXTURE TO REMAIN. CONTRACTOR TO REPLACE EXISTING INCANDESCENT LAMPS WITH NEW COMPACT FLUORESCENT BULBS.
 - 3 BATHROOMS HAVE AN EXISTING VANITY LIGHT FIXTURE TO REMAIN. CONTRACTOR TO REPLACE EXISTING INCANDESCENT LAMPS WITH NEW COMPACT FLUORESCENT BULBS.