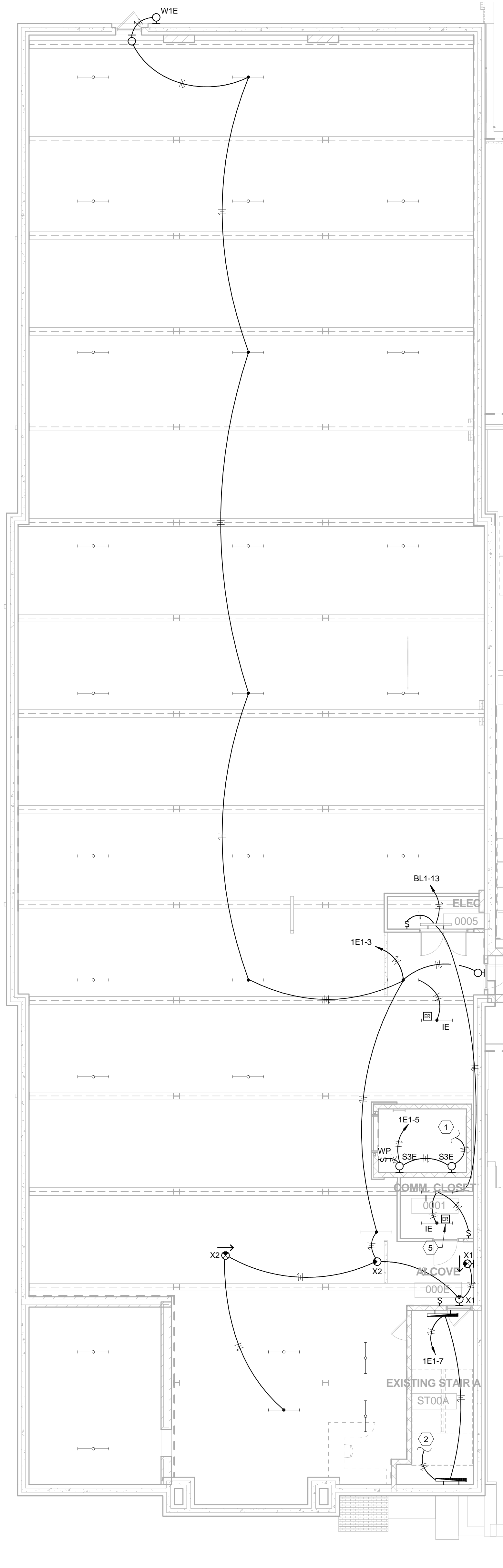


2 LIGHTING DESIGN-BASEMENT PLAN - ALTERNATE
1/8" = 1'-0"



1 LIGHTING DESIGN-BASEMENT PLAN - BASE BID
1/8" = 1'-0"

LIGHTING DESIGN GENERAL NOTES

- A. CONTRACTOR IS PERMITTED TO USE 1/2" CONDUIT FOR LIGHT FIXTURES IN EXPOSED CEILING TO MINIMIZE APPEARANCE OF CONDUIT RUNS.
- B. ALL CONDUIT, RACEWAY, AND JUNCTION BOXES IN EXPOSED CEILING IS TO BE PAINTED TO MATCH STRUCTURE.
- C. CONTRACTOR IS RESPONSIBLE FOR INSTALLATION OF EXPOSED CONDUIT TO MINIMIZE APPEARANCE AND IN AN EXCELLENT WORKMAN LIKE APPEARANCE. EXPOSED CONDUIT SHALL BE INSTALLED WITH RUNS IN PARALLEL OR PERPENDICULAR TO WALLS, STRUCTURAL MEMBERS, OR INTERSECTIONS OF VERTICAL PLANES AND CEILINGSS. ALL RIGHT TURNS TO HAVE METAL FITTINGS OR SYMMETRICAL BENDS UNLESS APPROVED IN WRITING BY ARCHITECT.
- D. FIXTURES TAGGED AS "NL" (NIGHT-LIGHT) ARE TO REMAIN ILLUMINATED AND UNSWITCHED VIA LOCAL CONTROLS.
- E. ALL OCCUPANCY SENSORS TO HAVE DUAL SIGNAL OUTPUTS. ONE FOR LIGHTING CONTROL. ONE FOR HVAC CONTROL.
- F. ALL CEILING MOUNTED DEVICES IN BASEMENT TO BE REMOVED (ALTERNATE AND BASE BID). BASEMENT LIGHTING IS TO BE REINSTALLED IN NEW CEILING AT EXISTING LOCATION (BASE BID).

LIGHTING DESIGN BASEMENT PLAN TAGGED NOTES (X)

- 1. CONNECT ELEVATOR LIGHTING TO RECEPTACLES AND HOMERUN TO PANEL CIRCUIT.
- 2. CONNECT CIRCUIT TO LEVEL ABOVE.
- 3. CONTRACTOR IS TO PROVIDE A NETWORKED LIGHTING RELAY FOR CORRIDOR, COMMONS, AND RAMP FIXTURES. LIGHTING RELAY TO BE CONTROLLED VIA TIME SCHEDULE WITH LOCAL SWITCH OVERRIDE. SEE SPECIFICATIONS FOR ADDITIONAL INFORMATION.
- 4. PROVIDE DUAL LEVEL SWITCHING FOR THIS AREA.
- 5. PROVIDE EMERGENCY POWER RELAY TO ALLOW FIXTURE TO BE NORMALLY CONTROLLED BUT ILLUMINATE UPON LOSS OF BUILDING POWER VIA EMERGENCY LIGHTING.
- 6. CONNECT TO CIRCUIT BL1-13 AS SHOWN ON BASE BID.