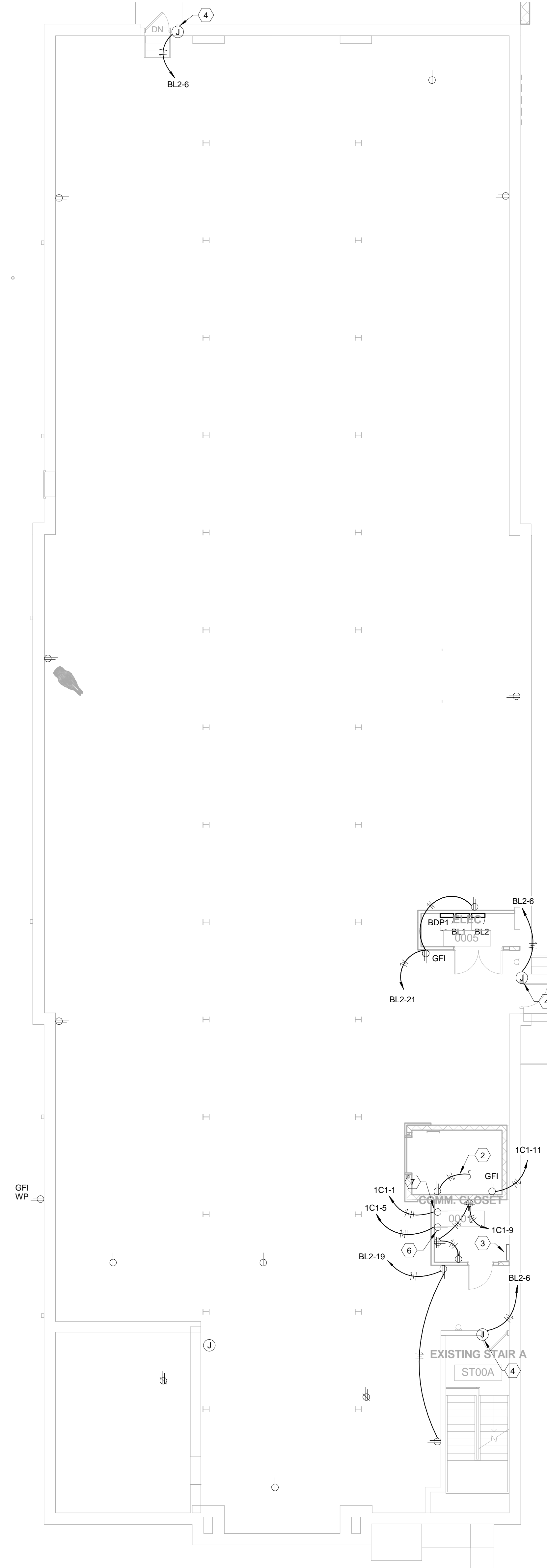


POWER DESIGN BASEMENT PLAN -
ALTERNATE
② 1/8" = 1'-0"



POWER DESIGN BASEMENT PLAN - BASE
① 1/8" = 1'-0"

POWER GENERAL NOTES

- A. ALL PENETRATIONS IN FIRE RATED WALLS ARE TO BE SEALED AND FIRE STOPPED BY A U.L. LISTED FIRE ASSEMBLY AND APPROVED MANNER.
- B. REFER TO ARCHITECT'S CASEWORK/FURNITURE DETAILS AND ROOM ELEVATIONS FOR EXACT LOCATION AND MOUNTING HEIGHTS OF DEVICES, ETC.
- C. PROVIDE PULL WIRES IN EACH EMPTY CONDUIT LEFT FOR FURNITURE USE.
- D. ALL WIRES SHALL BE #12 WITH A #12 GROUND (U-DAL).
- E. CONTRACTOR IS RESPONSIBLE FOR CONNECTING ALL OWNER FURNISHED EQUIPMENT TO POWER SOURCE WHEN THE CONNECTION IS HARDWIRED.

POWER DESIGN BASEMENT PLAN TAGGED NOTES

- 1. EXISTING RECEPTACLE LOCATION TO REMAIN. RECIRCUIT TO NEW PANEL AS SHOWN.
- 2. CONNECT TO ELEVATOR PIT LIGHT FIXTURE CIRCUIT.
- 3. TELECOM ROOM GROUNDING BAR. BASEMENT TO BE CONNECTED TO SERVICE ENTRANCE GROUND AT MDF.
- 4. PROVIDE POWER FOR DOOR HARDWARE AND/OR SECURITY DEVICES. SEE SYSTEM DRAWING FOR DEVICE TYPES. COORDINATE INSTALLATION WITH OWNER'S SECURITY CONTRACTOR AND DOOR HARDWARE.
- 5. RECEPTACLES SHOWN AT THIS WALL ARE TO BE MOUNTED HORIZONTALLY AT +7" ABOVE FINISHED FLOOR. COORDINATE DEVICE WITH ARCHITECT'S BASE BOARD SO RECEPTACLES DO NOT INTRUDE ON BASE FINISH.
- 6. PROVIDE L14-30R RECEPTACLE CONNECTION FOR NEW 5 KVA UPS UNIT POWER CONNECTION (NOTE: UPS TO BE PROVIDED AND INSTALLED BY OTHERS).
- 7. PROVIDE NEW NEMA L6-30R FOR POWER STRIP CONNECTION (NOTE: POWER STRIP TO BE PROVIDED BY OTHERS).
- 8. CONNECT TO CIRCUIT BL2-21 AS SHOWN ON BASE BID.