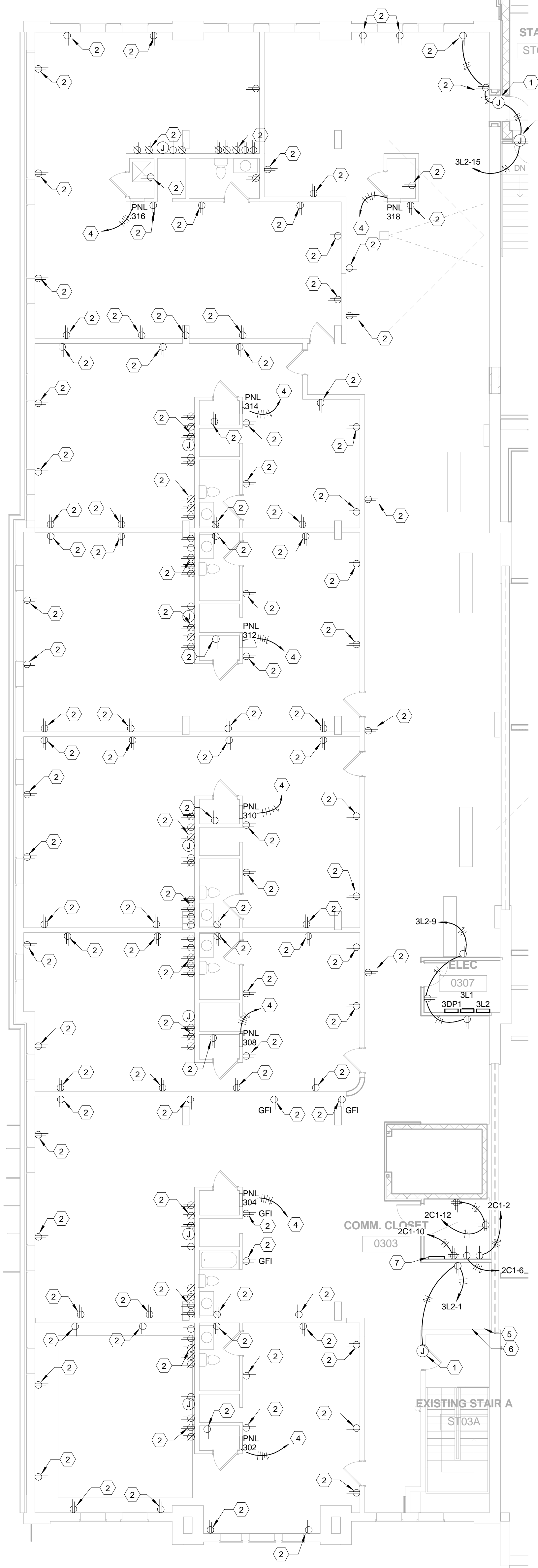


POWER DESIGN THIRD FLOOR PLAN -
 ALTERNATE
 1/8" = 1'-0"



POWER DESIGN THIRD FLOOR PLAN -
 BASE BID
 1/8" = 1'-0"

POWER GENERAL NOTES

- A. ALL PENETRATIONS IN FIRE RATED WALLS ARE TO BE SEALED AND FIRE STOPPED BY A U.L. LISTED FIRE ASSEMBLY AND APPROVED MANNER.
- B. REFER TO ARCHITECT'S CASEWORK/FURNITURE DETAILS AND ROOM ELEVATIONS FOR EXACT LOCATION AND MOUNTING HEIGHTS OF DEVICES, ETC.
- C. PROVIDE PULL WIRES IN EACH EMPTY CONDUIT LEFT FOR FURNITURE USE.
- D. ALL WIRES SHALL BE #12 WITH A #12 GROUND (U.O.A.).
- E. CONTRACTOR IS RESPONSIBLE FOR CONNECTING ALL OWNER FURNISHED EQUIPMENT TO POWER SOURCE WHEN THE CONNECTION IS HARDWIRED.

POWER DESIGN THIRD FLOOR PLAN TAGGED NOTES

- 1. PROVIDE POWER FOR DOOR HARDWARE AND/OR SECURITY DEVICES. SEE SYSTEM DRAWING FOR DEVICE TYPES.
- 2. EXISTING RECEPTACLE LOCATION TO REMAIN. RECIRCUIT TO NEW PANEL AS SHOWN.
- 3. CONNECT NEW CIRCUIT TO EXISTING PANEL 318 WITH NEW 20 AMP, SINGLE POLE BREAKER.
- 4. EXISTING DISTRIBUTION PANEL TO REMAIN. PROVIDE NEW FEEDER TO DISTRIBUTION PANEL 30P1.
- 5. PROVIDE L14-0R RECEPTACLE CONNECTION FOR NEW 5 KVA UPS UNIT POWER CONNECTION (NOTE: UPS TO BE PROVIDED AND INSTALLED BY OTHERS).
- 6. PROVIDE NEW NEMA L6-30R FOR POWER STRIP CONNECTION (NOTE: POWER STRIP TO BE PROVIDED BY OTHERS).
- 7. TELECOM ROOM GROUNDING BAR. BASEMENT TO BE CONNECTED TO SERVICE ENTRANCE GROUND AT MDF.
- 8. USB PORT RECEPTACLE. DEVICE TO BE LEGRAND TMBUSB, OR EQUAL.
- 9. CONNECT TO CIRCUIT 3L2-1 AS SHOWN ON BASE BID.
- 10. CONNECT TO CIRCUIT 3L2-15 AS SHOWN ON BASE BID.