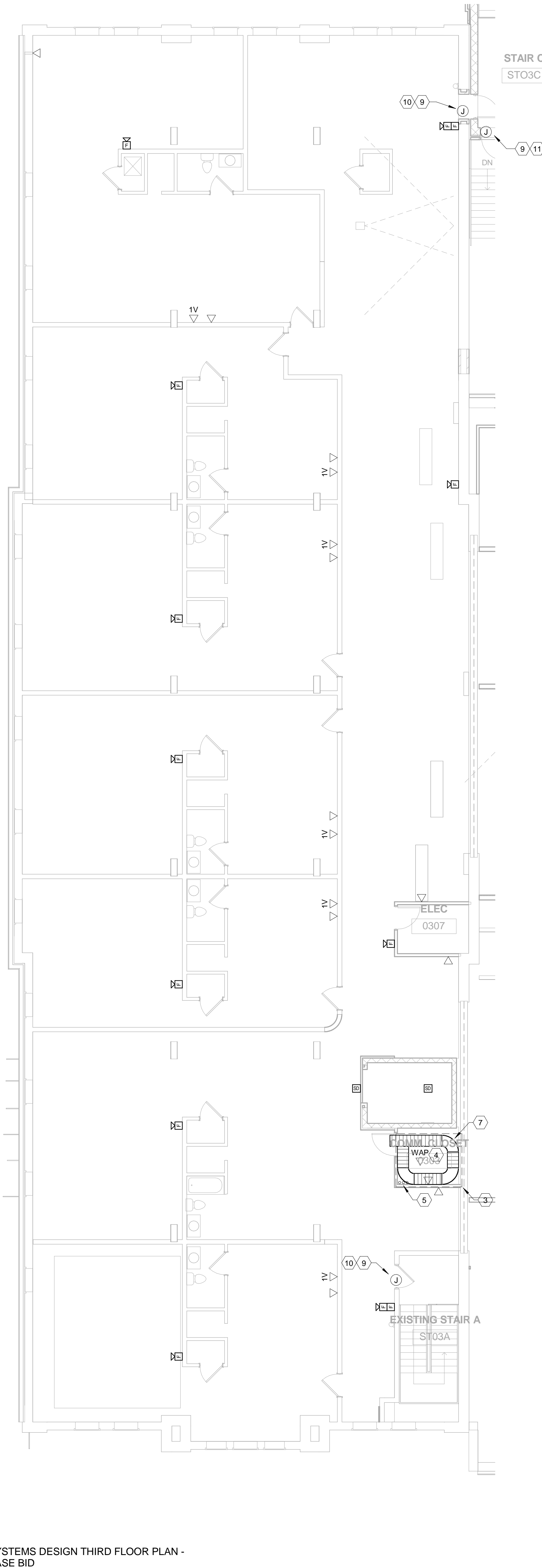


SYSTEMS DESIGN THIRD FLOOR PLAN - ALTERNATE  
 1/8" = 1'-0"



SYSTEMS DESIGN THIRD FLOOR PLAN - BASE BID  
 1/8" = 1'-0"

SYSTEMS DESIGN GENERAL NOTES

- A. CONTRACTOR IS TO REFERENCE UNIVERSITY OF KENTUCKY COMMUNICATION AND NETWORK SYSTEMS TELECOMMUNICATIONS STANDARDS REVISION 5.0.
- B. CONTRACTOR TO TAKE PRECAUTIONS TO PROTECT NETWORK CABLE FROM DAMAGE AND PAINT. NETWORK CABLE THAT IS EXPOSED TO PAINT IS SUBJECT TO BE REPLACED AT THE CONTRACTOR'S EXPENSE.

SYSTEMS DESIGN THIRD FLOOR PLAN TAGGED NOTES

- 1. EXISTING DATA DROP LOCATION. CONTRACTOR TO REMOVE EXISTING DEVICE PLATE AND NETWORK CABLE. REUSE EXISTING BACKBOX AND CONDUIT FOR NEW NETWORK CABLE AND DEVICE (CABLE AND DEVICE BY OWNER).
- 2. CONTRACTOR TO PROVIDE 1" CONDUIT AND NEW BACKBOX WITH PULL STRING TO JUNCTION (FULL) BOX IN ACCESSIBLE CEILING. NETWORK CABLE ETHERNET CONNECTOR AND DEVICE PLATE BY UNIVERSITY OF KENTUCKY CNS. (TYPICAL)
- 3. COMMUNICATION ROOM. ALL DATA CABLES FOR THIRD FLOOR TO HOMERUN TO THIS LOCATION (DATA CABLE INSTALLATION BY UNIVERSITY OF KENTUCKY CNS. RACEWAY BY CONTRACTOR).
- 4. WIRELESS ACCESS PORT LOCATION. WIRELESS ACCESS PORT TO BE PROVIDED AND INSTALLED BY UNIVERSITY OF KENTUCKY CNS. CONTRACTOR TO PROVIDE NEW 4-11/16" BOX ATTACHED TO STRUCTURAL MEMBER WITH A SINGLE GANG MUD RING AND FACEPLATE. (TYPICAL)
- 5. CONTRACTOR TO PROVIDE THREE (3) 4" CONDUITS TO FLOOR BELOW. PROVIDE FIRE RATED ASSEMBLY FOR EACH PENETRATION.
- 6. CONTRACTOR MAY PROVIDE J-HOOKS IN ACCESSIBLE CEILINGS FOR CABLE RACEWAY. J-HOOKS TO BE INSTALLED AT A MAXIMUM OF 48" SPACING. CABLE SUPPORTS TO BE SIZED TO ACCOMMODATE THE CURRENT INSTALLATION PLUS 50% GROWTH. COORDINATE RACEWAY PATH WITH CNS AND ENGINEER VIA A SHOP DRAWING SUBMITTAL. SHOP DRAWING TO BE APPROVED PRIOR TO INSTALLATION.
- 7. CONTRACTOR TO PROVIDE LADDER STYLE CABLE TRAY (12"W x 4"D). RUNG SPACING TO BE A MAXIMUM OF 6". GROUND CABLE TRAY PER CNS STANDARDS.
- 8. CCTV CAMERA LOCATION. CONTRACTOR TO PROVIDE 1" CONDUIT HOMERUN TO NEAREST COMM CLOSET. CCTV CAMERA, CABLE, AND EQUIPMENT BY SECURITY VENDOR. 4" SQUARE BACKBOX BY CONTRACTOR. (TYPICAL)
- 9. DOOR LOCATION WITH ACCESS CONTROL. HARDWARE. CONTRACTOR TO PROVIDE RACEWAY AND POWER AS NEEDED FOR DEVICES AND CONTROLS. COORDINATE WITH DOOR HARDWARE SCHEDULE AND SECURITY VENDOR.
- 10. DOOR HARDWARE TAG E01. REFER TO DETAILS FOR ADDITIONAL INFORMATION.
- 11. DOOR HARDWARE TAG E11. REFER TO DETAILS FOR ADDITIONAL INFORMATION.