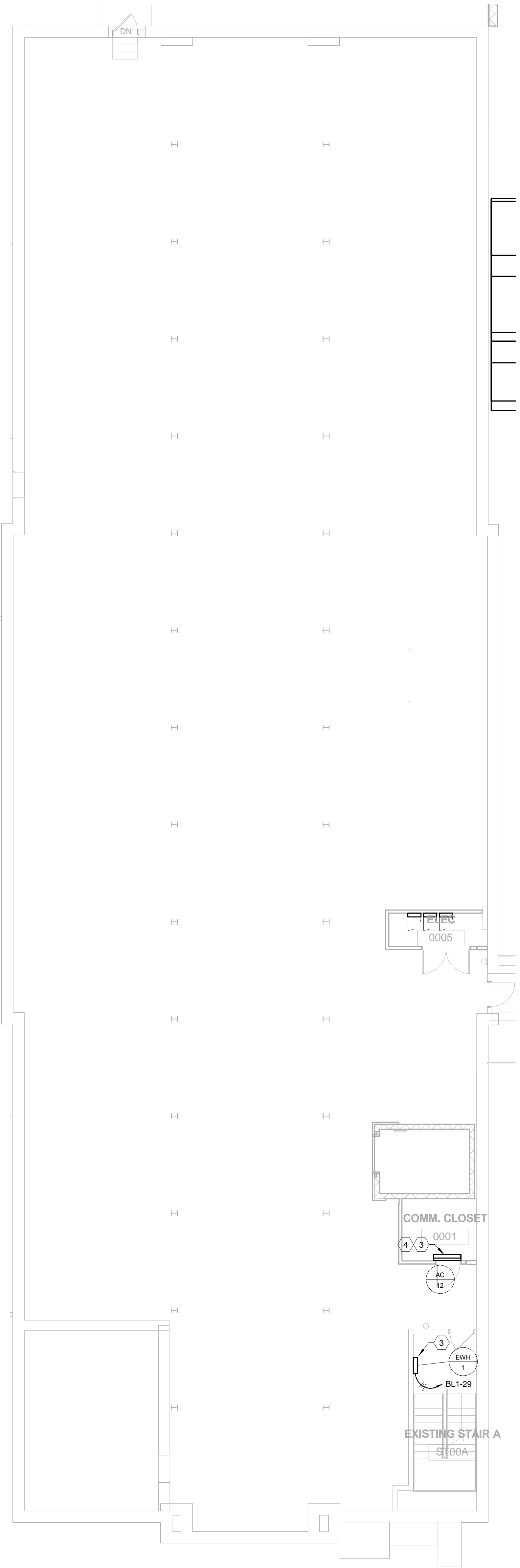


HVAC POWER DESIGN BASEMENT PLAN
 - ALTERNATE
 1/8" = 1'-0"



HVAC POWER DESIGN BASEMENT PLAN
 - BASE BID
 1/8" = 1'-0"

HVAC POWER DESIGN BASEMENT TAGGED NOTES

- 1 PROVIDE NEW NON-FUSED DISCONNECT RATED AT 100 AMPS, 208 VOLT, SINGLE PHASE, NEMA 1. REFERENCE MECHANICAL DETAILS FOR MOUNTING LOCATION. COORDINATE INSTALLATION WITH MECHANICAL CONTRACTOR.
- 2 PROVIDE NEW NON-FUSED DISCONNECT RATED AT 60 AMPS, 208 VOLT, SINGLE PHASE, NEMA 1. REFERENCE MECHANICAL DETAILS FOR MOUNTING LOCATION. COORDINATE INSTALLATION WITH MECHANICAL CONTRACTOR.
- 3 DISCONNECT TO BE PROVIDED BY MECHANICAL. COORDINATE INSTALLATION WITH MECHANICAL CONTRACTOR.
- 4 INDOOR/OUTDOOR UNIT WITH SINGLE POINT ELECTRICAL CONNECTION. COORDINATE RACEWAY BETWEEN INDOOR AND OUTDOOR UNIT WITH MECHANICAL. ELECTRICAL CONTRACTOR IS RESPONSIBLE FOR ELECTRICAL PROVISIONS FOR BOTH UNITS.
- 5 CONNECT TRAP PRIMER TO NEAREST RECEPTACLE CIRCUIT.