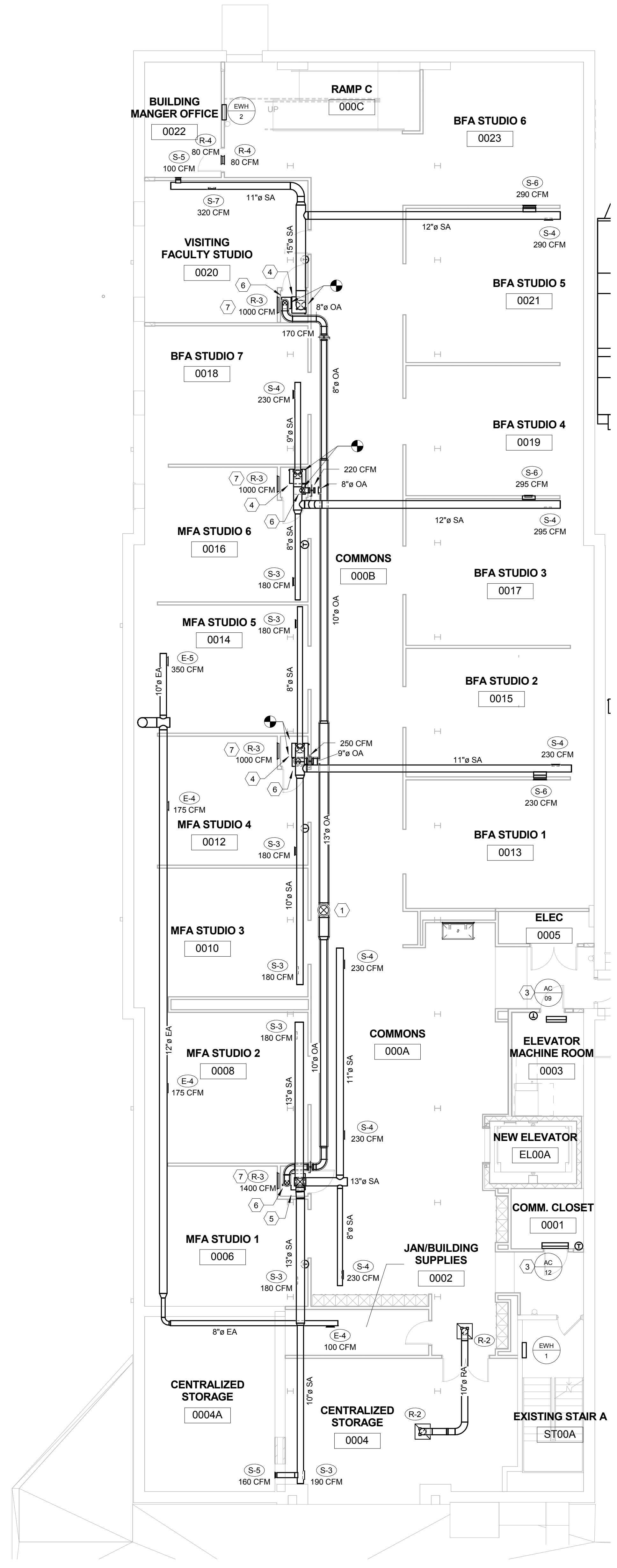
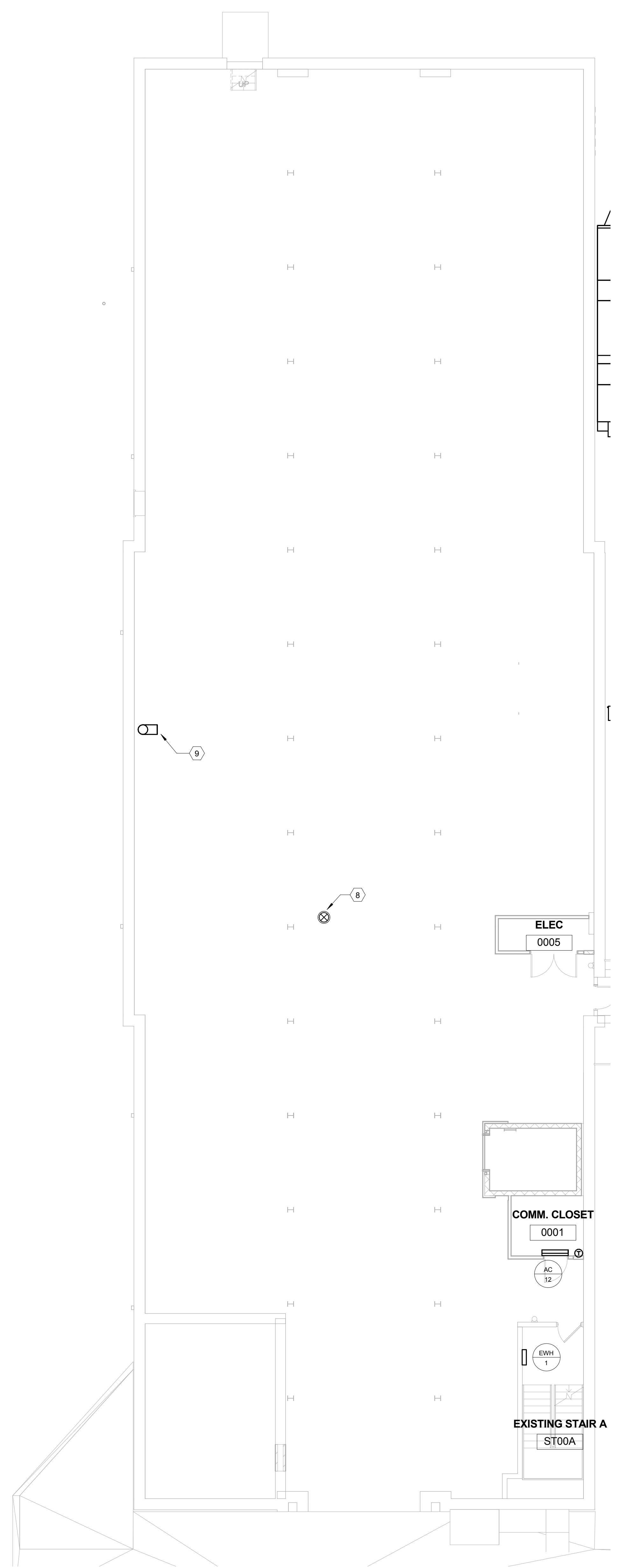


AIR DISTRIBUTION DESIGN BASEMENT
 PLAN - ALTERNATE
 2 1/8" = 1'-0"



AIR DISTRIBUTION DESIGN BASEMENT
 PLAN - BASE BID
 1 1/8" = 1'-0"



- AIR DISTRIBUTION GENERAL NOTES
- A ALL EXPOSED SUPPLY AIR AND OUTSIDE AIR DUCT WORK SHALL BE DOUBLE WALL DUCT. MAJORITY OF DUCT IN BUILDING IS EXPOSED. REFER TO SPECIFICATIONS AND ARCHITECTURAL CEILING PLANS FOR ADDITIONAL INFORMATION. DUCT SHALL BE PAINTED AS REQUIRED PER ARCHITECTURAL SPECIFICATIONS. IF PAINTED, COLOR SELECTED BY ARCHITECT. DUCT SEALANT SHALL BE NEATLY APPLIED AND SMOOTH FOR PAINT APPLICATION.
 - B ALL DARKROOM PENETRATIONS SHALL BE SEALED AIR TIGHT TO PREVENT ILLUMINATION SPILL FROM ADJACENT SPACE.
 - C MOUNT ALL DUCT AS HIGH AS POSSIBLE.
 - D PROVIDE LINTELS AND SUPPORTS AS REQUIRED FOR ALL PENETRATIONS OF EXISTING WALLS.
 - E ALL RELOCATED INDOOR UNITS SHALL BE PROVIDED WITH MERV 8 FILTER WITH 2" FILTER FRAME AT RETURN AIR CONNECTION.
 - F REFER TO EQUIPMENT MATRIX ON ARCHITECTURAL PLANS FOR CLARIFICATION ON PROVIDING, RELOCATION, INSTALLATION, ETC. OF EQUIPMENT.
 - G PROVIDE ALL RELOCATED SPLIT SYSTEMS WITH NEW LOW AMBIENT KITS.
- AIR DISTRIBUTION DESIGN BASEMENT PLAN TAGGED NOTES
- 1 ROUTE OUTSIDE AIR DUCT UP. REFER TO AIR DISTRIBUTION FIRST FLOOR PLAN FOR CONTINUATION.
 - 2 ROUTE EXHAUST DUCT UP. REFER TO AIR DISTRIBUTION FIRST FLOOR PLAN FOR CONTINUATION.
 - 3 MOUNT UNIT ABOVE DOOR.
 - 4 RELOCATED EXISTING 2.5 TON INDOOR UNIT.
 - 5 RELOCATED EXISTING 3.5 TON INDOOR UNIT.
 - 6 CONNECT OUTSIDE AIR DUCT TO RETURN AIR DUCT PLENUM ON BOTTOM OF UNIT. MOUNT OUTSIDE AIR DAMPER IN ACCESSIBLE LOCATION. TYPICAL.
 - 7 MOUNT BOTTOM OF RETURN GRILLE AT 8'-0" FROM FINISHED FLOOR. PROVIDE FACE GRILLE SIZED DUCT TO CONNECT TO BACK OF GRILLE. DUCT SHALL REMAIN OPEN-ENDED IN CLOSET. CAP EXISTING 15" DIAMETER OUTSIDE AIR DUCT FOR FUTURE EXPANSION.
 - 8 CAP EXISTING 15" DIAMETER EXHAUST AIR DUCT FOR FUTURE EXPANSION.
 - 9